

Product datasheet for **RG209049**

THNSL2 (NM_018271) Human Tagged ORF Clone

Product data:

Product Type:	Expression Plasmids
Product Name:	THNSL2 (NM_018271) Human Tagged ORF Clone
Tag:	TurboGFP
Symbol:	THNSL2
Synonyms:	SOFAT; THS2; TSH2
Mammalian Cell Selection:	Neomycin
Vector:	pCMV6-AC-GFP (PS100010)
E. coli Selection:	Ampicillin (100 ug/mL)



[View online »](#)

ORF Nucleotide Sequence:

>RG209049 representing NM_018271
 Red=Cloning site Blue=ORF Green=Tags(s)

TTTTGTAATACGACTCACTATAGGGCGGCCGGAATTCGTCGACTGGATCCGGTACCGAGGAGATCTGCC
 GCC**GCGATCGCC**

ATGTGGTATGTACAGCACCAGGGCGTAGCCCCACGGGTCAACTTTGAGGGGGCCCTTCTCTGGCTATG
 CACCTGACGGGGCCCTTTTATGCCTGAAGAGCTCCCACAGTTGGACAGAGGGACCCTGTGCCAGTGGAG
 CACACTCTCTATCCTGGCCTGGTGAAGGAGCTGTGTGCCTCTTCATTGGCTCTGAGCTCCTTCCAAAA
 GATGAATTAATGATCTGATCGACCGAGCCTTCAGCAGATTCCGTACAGAGAAGTGGTCCATCTGTCCA
 GGTTGAGGAATGGGCTGAACGTGTTGGAGCTGTGGCATGGCGTCACATATGCATTTAAGGACCTGTCCCT
 GTCCTGCACAACACAGTTCCTGCAGTACTTCTGGAGAAGAGGGAGAAGCACGTCACCTGTGGTTGTAGGA
 ACATCTGGGGACACAGGAAGTGTGCCATTGAGAGTGTCAAGGGGCAAAGAACATGGACATTATCGTTC
 TGCTGCCCAAAGGTCACGCACAAGATTCAAGGAGCTCCAGATGACAACGGTGTGAAGCAGAACGTACA
 TGTGTTTGGAGTGGAGGAAACAGCGATGAGCTCGATGAGCCGATCAAGACTGTGTTTCCGATGTGGCT
 TTTGTCAAGAAGCACAATCTGATGAGCCTGAATTCGATCAACTGGTCCCGGGTCCCTGGTGCAGATGGCCC
 ATCACTTCTTTGCTTACTTCCAGTGTACGCCATCCTTGGACACACATCCCCTACCCTGGTGGAGGTGGT
 TGTGCCAACAGGGGCTGCCGGTAACCTTGACAGTGGGTACATTGCTCAAAAGATAGGCCTGCCCATCCGT
 CTGGTCTGTGGCAGTGAACCGCAATGACATCATCCACAGGACTGTCCAGCAGGGGAGACTTCTCTCTCTG
 AGGCTGTTAAATCAACCTTGGCATCAGCTATGGACATTCAGGTGCCCTACAACATGGAGAGGGTGTCTG
 GCTGCTCTGTGGCTCTGACAGCCAGGTGACAAGAGCCCTCATGGAGCAGTTTGAAGGACCCAAAGTGTG
 AATCTGCCAAGGAAGTGCACAGCAAGCTTTCAGAGGCAGTGCATCCGTGTGAGTGTGGATGAAGCCA
 TCACCCAGACCATGGGCCGCTGCTGGGATGAGAACCAGTACTTGTGTGCCCCACTCAGCGGTGGCCCT
 GAACTACCATTACCAGCAGATAGACAGGCAGCAGCCAGCACTCCCGGGTGTGCCTCGCCCTGCCTCT
 GCAGCCAAGTTCCCGGAAGCTGTCTGGCTGTGGCTGACCCCTGAGACTCCCGCGGAGATCGTAGCCC
 TGGAGCACAAGGAGACACGCTGCACCCTGATGCGGAGAGGTGACAACTGGATGCTGATGCTTCGGGACAC
 CATTGAGGACCTTAGCCGACAGTGGAGGAGTCATGCCCTCAACACCTCCCAG

ACGCGTACGCGGCCGCTCGAG - GFP Tag - GTTTAA

Protein Sequence:

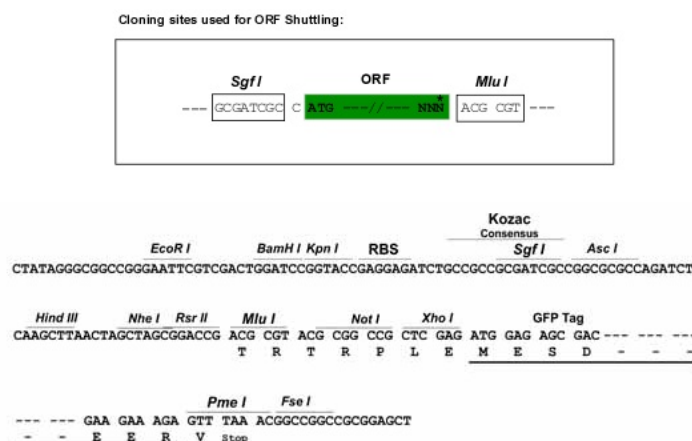
>RG209049 representing NM_018271
 Red=Cloning site Green=Tags(s)

MWYVSTRGVAPRVNFEALFSGYAPDGGFLMPEELPQLDRGTLQWSTLSYPGLVKELCALFIGSELLPK
 DELNDLIDRAFSRFRHREVVHLSRLRNLNVLELWHGVTYAFKDLSLSCTTQFLQYFLEKREKHVTVVVG
 TSGDTGSAAIESVQGAKNMDIIVLLPKGHCTKIQELQMTTVLQNVHVFVVEGNSDELDEPIKTVFADVA
 FVKKHNLSLNSINWSRVLVQMAHFFAYFQCTPSLDTHPLPLVEVVVPTGAAGNLAAGYIAQKIGLPIR
 LVVAVNRNDIIHRTVQQGDFSLSEAVKSTLASAMDIQVPYNMERVFWLLSGSDSQVTRALMEQFERTQSV
 NLPKELHSLKSEAVTSVSVSDEAITQTMGRCDENQYLLCPHSAVAVNYHYQQIDRQQPSTPRCCLAPAS
 AAKFPEAVLAAGLTPETPAEIVALEHKETRCTLMRRGDNWMLMLRDTIEDLSRQWRSHALNTSQ

TRTRPLE - GFP Tag - V

Restriction Sites:

SgfI-MluI

Cloning Scheme:


ACCN: NM_018271

ORF Size: 1452 bp

OTI Disclaimer: The molecular sequence of this clone aligns with the gene accession number as a point of reference only. However, individual transcript sequences of the same gene can differ through naturally occurring variations (e.g. polymorphisms), each with its own valid existence. This clone is substantially in agreement with the reference, but a complete review of all prevailing variants is recommended prior to use. [More info](#)

OTI Annotation: This clone was engineered to express the complete ORF with an expression tag. Expression varies depending on the nature of the gene.

Components: The ORF clone is ion-exchange column purified and shipped in a 2D barcoded Matrix tube containing 10ug of transfection-ready, dried plasmid DNA (reconstitute with 100 ul of water).

Reconstitution Method:

1. Centrifuge at 5,000xg for 5min.
2. Carefully open the tube and add 100ul of sterile water to dissolve the DNA.
3. Close the tube and incubate for 10 minutes at room temperature.
4. Briefly vortex the tube and then do a quick spin (less than 5000xg) to concentrate the liquid at the bottom.
5. Store the suspended plasmid at -20°C. The DNA is stable for at least one year from date of shipping when stored at -20°C.

RefSeq: [NM_018271.5](#)

RefSeq Size: 2150 bp

RefSeq ORF: 1455 bp

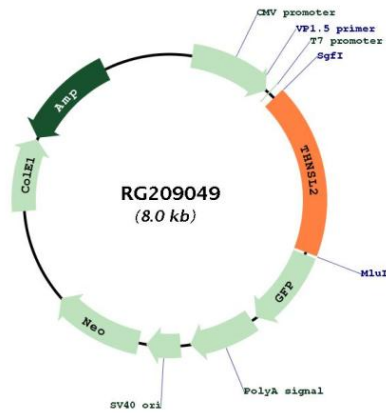
Locus ID: 55258

UniProt ID: [Q86YJ6](#)

Cytogenetics: 2p11.2

Gene Summary: This gene encodes a threonine synthase-like protein. A similar enzyme in mouse can catalyze the degradation of O-phospho-homoserine to a-ketobutyrate, phosphate, and ammonia. This protein also has phospho-lyase activity on both gamma and beta phosphorylated substrates. In mouse an alternatively spliced form of this protein has been shown to act as a cytokine and can induce the production of the inflammatory cytokine IL6 in osteoblasts. Alternate splicing results in multiple transcript variants. [provided by RefSeq, Sep 2011]

Product images:



Circular map for RG209049