

Product datasheet for **RG209025**

Josephin 2 (JOSD2) (NM_138334) Human Tagged ORF Clone

Product data:

Product Type: Expression Plasmids
Product Name: Josephin 2 (JOSD2) (NM_138334) Human Tagged ORF Clone
Tag: TurboGFP
Symbol: Josephin 2
Synonyms: SBB154
Mammalian Cell Selection: Neomycin
Vector: pCMV6-AC-GFP (PS100010)
E. coli Selection: Ampicillin (100 ug/mL)
ORF Nucleotide Sequence: >RG209025 representing NM_138334
Red=Cloning site Blue=ORF Green=Tags(s)

TTTTGTAATACGACTCACTATAGGGCGGCCGGAATTCGTCGACTGGATCCGGTACCGAGGAGATCTGCC
GCC**CGATCGCC**

ATGTCCCAGGCCCGGGAGCACAGCCGAGCCACCCACCGTGTACCACGAACGGCAGCGCCTGGAGCTGT
GTGCTGTCCAGCCCTCAACAACGTTCTGCAGCAGCAGCTCTTTAGCCAGGAGGCTGCCGATGAGATCTG
CAAGAGGTTGGCCCGACTCCCGGCTGAACCCTCATCGAGCCTCCTGGCACCAGGCAACTATGATGTC
AATGTGATCATGGCCGCTCTGCAGGGGCTGGCCCTGGCCGCGTGTGGTGGACAGGAGGAGGCCCTGT
CCCAGCTGGCCCTGCCAGGACTGGGGCTGATCCTGAACCTGCCCTCGCCGTCGCTGGGGCTGCT
GTCACTGCCGCTGCGCCGCGGCACTGGGTGGCCCTGCGCCAGGTGGACGGTGTCTACTACAACCTGGAC
TCCAAGCTGCGGGCGCCGAGGCCCTGGGGATGAGGACGGAGTCAGGGCCTTCTGGCGCTGCGCTGG
CCCAGGGCCTGTGCGAGGTGCTGCTGGTGTAGTACCAGGAGGTGGAGGAGAAGGGCAGCTGGCTGCGGAC
AGAC

ACGCGTACGCGGCCGCTCGAG - GFP Tag - GTTTAA

Protein Sequence: >RG209025 representing NM_138334
Red=Cloning site Green=Tags(s)

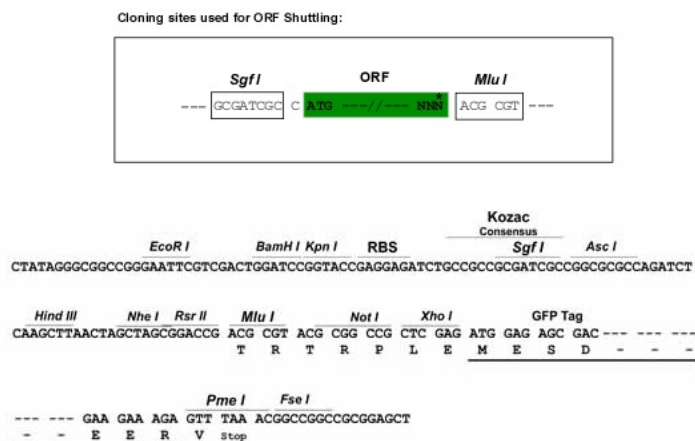
MSQAPGAQPSPTVYHERQRLELCAVHALNNVLQQQLFSQEADEICKRLAPDSRLNPHRSLLGTGNYDV
NVIMAALQGLGLAAVWDRRRPLSQLALPQVLGLILNLPSPVSLGLLSLPLRRRHVVALRQVDGVYYNLD
SKLRAPEALGDEGVRFLAAALAQGLCEVLLVVTKEVEEKGSWLRD

TRTRPLE - GFP Tag - V

Restriction Sites: Sgfl-MluI



[View online »](#)

Cloning Scheme:


ACCN: NM_138334

ORF Size: 564 bp

OTI Disclaimer: The molecular sequence of this clone aligns with the gene accession number as a point of reference only. However, individual transcript sequences of the same gene can differ through naturally occurring variations (e.g. polymorphisms), each with its own valid existence. This clone is substantially in agreement with the reference, but a complete review of all prevailing variants is recommended prior to use. [More info](#)

OTI Annotation: This clone was engineered to express the complete ORF with an expression tag. Expression varies depending on the nature of the gene.

Components: The ORF clone is ion-exchange column purified and shipped in a 2D barcoded Matrix tube containing 10ug of transfection-ready, dried plasmid DNA (reconstitute with 100 ul of water).

Reconstitution Method:

1. Centrifuge at 5,000xg for 5min.
2. Carefully open the tube and add 100ul of sterile water to dissolve the DNA.
3. Close the tube and incubate for 10 minutes at room temperature.
4. Briefly vortex the tube and then do a quick spin (less than 5000xg) to concentrate the liquid at the bottom.
5. Store the suspended plasmid at -20°C. The DNA is stable for at least one year from date of shipping when stored at -20°C.

RefSeq: [NM_138334.4](#)

RefSeq Size: 789 bp

RefSeq ORF: 567 bp

Locus ID: 126119

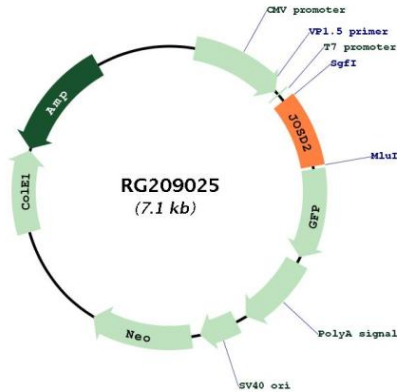
UniProt ID: [Q8TAC2](#)

Cytogenetics: 19q13.33

Protein Families: Druggable Genome

Gene Summary: This gene encodes a protein containing a Josephin domain. Josephin domain-containing proteins are deubiquitinating enzymes which catalyze the hydrolysis of the bond between the C-terminal glycine of the ubiquitin peptide and protein substrates. Alternatively spliced transcript variants encoding multiple isoforms have been observed for this gene. [provided by RefSeq, Jul 2012]

Product images:



Circular map for RG209025