

## Product datasheet for **RG209024**

### **VANGL1 (NM\_138959) Human Tagged ORF Clone**

#### **Product data:**

|                           |   |
|---------------------------|---|
| Product Type:             | Expression Plasmids                       |
| Product Name:             | VANGL1 (NM_138959) Human Tagged ORF Clone |
| Tag:                      | TurboGFP                                  |
| Symbol:                   | VANGL1                                    |
| Synonyms:                 | KITENIN; LPP2; STB2; STBM2                |
| Mammalian Cell Selection: | Neomycin                                  |
| Vector:                   | pCMV6-AC-GFP (PS100010)                   |
| E. coli Selection:        | Ampicillin (100 ug/mL)                    |



[View online »](#)

**ORF Nucleotide Sequence:**

>RG209024 representing NM\_138959  
 Red=Cloning site Blue=ORF Green=Tags(s)

TTTTGTAATACGACTCACTATAGGGCGGCCGGAATTCGTCGACTGGATCCGGTACCGAGGAGATCTGCC  
 GCC**CGGATCGCC**

ATGGATACCGAATCCACTTATTCTGGATATTCTTACTATTCAAGTCATTCGAAAAATCTCACAGACAAG  
 GGGAAAGAACTAGAGAGAGACACAAGTCACCCCGAATAAAGACGCGAGAGGGTCAGAAAAGTCTGTAC  
 CATTCAACCTCCCACTGGAGAGCCCTGTTGGAAATGATTCTACTCGGACAGAGGAAGTTCAGGATGAC  
 AACTGGGAGAGACCACCACGGCCATCACAGGCACCTCGGAGCACAGCATATCCCAAGAGGACATTGCCA  
 GGATCAGCAAGGACATGGAGGACAGCGTGGGGCTGGATTGCAAACGCTACCTGGGCTCACCGTCGCCTC  
 TTTTCTTGGACTTCTAGTTTTCTCACCCCTATTGCCTTCATCCTTTTACCTCCGATCCTGTGGAGGGAT  
 GAGCTGGAGCCTGTGGACAATTTGTGAGGGCTCTTTATCTCCATGGCATTCAAACCTCCTATTCTGC  
 TCATAGGGACCTGGGCACTTTTTTCCGAAGCGGAGAGCTGACATGCCACGGGTGTTTGTGTTTCGTGC  
 CCTTTTGTGGTCTCATCTTTCTTTGTGGTTTCTATTGGCTTTTTTACGGGGTCCGCATTTTGGAC  
 TCTCGGGACCGGAATTACCAGGGCATTGTGCAATATGCAGTCTCCCTTGTGGATGCCCTCCTCTTATCC  
 ATTACCTGGCCATCGTCCTGCTGGAGCTCAGGCAGCTGCAGCCATGTTACAGCTGCAGGTGGTCCGCTC  
 CACCGATGGCGAGTCCCCTTCTACAGCCTGGGACACCTGAGTATCCAGCGAGCAGCATTGGTGGTCCCTA  
 GAAAATTACTACAAGATTTCCACATCTATAACCCAAACCTCCTAACAGCCTCCAAATCCGAGCAGCCA  
 AGCATATGGCCGGGCTGAAAGTCTACAATGTAGATGGCCCCAGTAAACAATGCCACTGGCCAGTCCCGGGC  
 CATGATTGCTGCAGCTGCTCGGCGCAGGGACTCAAGCCACAACGAGTTGTATTATGAAGAGGCCGAACAT  
 GAACGGCAGTAAGAAGCGGAAAGCAAGGCTGGTGGTGCAGTGAAGAGGCCCTTCATCCACATTACAGC  
 GTCTCCAGGCTGAGGAGCAGAGAAAGCCAGGGGAGGTGATGGACCCTAGGGAGGCCGCCAGGCCAT  
 TTTCCCTCCATGGCCAGGGCTCTCAGAAGTACCTGCGCATCACCCGGCAGCAGAACTACCACAGCATG  
 GAGAGCATCCTGCAGCACCTGGCCTTCTGCATACCAACGGCATGACCCCAAGGCCTTCTAGAACGGT  
 ACCTCAGTGGGGCCCCACCCTGCAATATGACAAGGACCCTGGCTCTACACAGTGGAGGCTTGTGAG  
 TGATGAGGCTGTGACTAATGGATTACGGGATGGAATTGTGTTCTTAAGTGTGGACTTACGCCTC  
 GTAGTCAATGTGAAGAAAATTCATTATCATACTCTCTGAAGAGTTCATAGACCCCAAATCTCACAAAT  
 TTGTCCTTCGCTTACAGTCTGAGACATCCGT

**ACGCGTACGCGGCCGCTCGAG** – GFP Tag – GTTTAA

**Protein Sequence:**

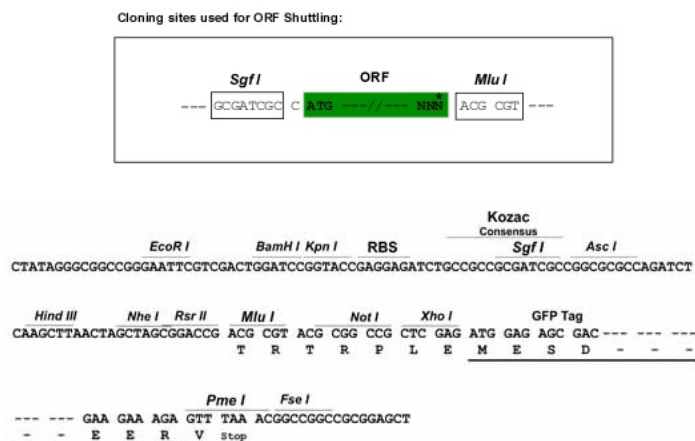
>RG209024 representing NM\_138959  
 Red=Cloning site Green=Tags(s)

MDTESTYSGYSYSSHSKSHRQGERTRERHKSPRNKDGRGSEKSVTIQPPTGPELLGNDSTRTEEVQDD  
 NWGETTTAITGTSEHSISQEDIARISKDMEDSVGLDCKRYLGLTVASFLGLLVFLTPIAFILLPPIIWRD  
 ELEPCGTICEGLFISMAFKLLILLIGTWALFFRKRRADMPRVFVFRALLLVLIFFVVSYWLFYGVRIID  
 SRDRNYQGIVQYAVSLVDALLFIHYLAIVLLELRQLQPMFTLQVVRSTDGESRFYSLGHLISIQRAALVVL  
 ENYYKDFTIYNPNLLTASKFRAAKHMAGLKVYNVDGPSNATGQSRAMIAAAARRRDSHNELYEEAEH  
 ERRVKKRKARLVAVVEEAFIHIQRLQAEQKAPGEVMDPREAAQAIFPSMARALQKYLRIITRQNYHSM  
 ESILQHLAFCITNGMTPKAFLERYLSAGPTLQYDKDRWLSTQWRLVSDEAVTNGLRDGIVFVLKCLDFSL  
 VVNKKIPFIILSEEFIDPKSHKFLRLQSETSV

**TRTRPLE** – GFP Tag – V

**Restriction Sites:**

Sgfl-MluI

**Cloning Scheme:**


**ACCN:** NM\_138959

**ORF Size:** 1572 bp

**OTI Disclaimer:** The molecular sequence of this clone aligns with the gene accession number as a point of reference only. However, individual transcript sequences of the same gene can differ through naturally occurring variations (e.g. polymorphisms), each with its own valid existence. This clone is substantially in agreement with the reference, but a complete review of all prevailing variants is recommended prior to use. [More info](#)

**OTI Annotation:** This clone was engineered to express the complete ORF with an expression tag. Expression varies depending on the nature of the gene.

**Components:** The ORF clone is ion-exchange column purified and shipped in a 2D barcoded Matrix tube containing 10ug of transfection-ready, dried plasmid DNA (reconstitute with 100 ul of water).

**Reconstitution Method:**

1. Centrifuge at 5,000xg for 5min.
2. Carefully open the tube and add 100ul of sterile water to dissolve the DNA.
3. Close the tube and incubate for 10 minutes at room temperature.
4. Briefly vortex the tube and then do a quick spin (less than 5000xg) to concentrate the liquid at the bottom.
5. Store the suspended plasmid at -20°C. The DNA is stable for at least one year from date of shipping when stored at -20°C.

**RefSeq:** [NM\\_138959.3](#)

**RefSeq Size:** 8691 bp

**RefSeq ORF:** 1575 bp

**Locus ID:** 81839

**UniProt ID:** [Q8TAA9](#)

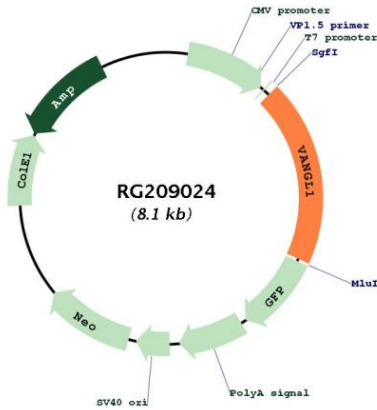
**Cytogenetics:** 1p13.1

**Protein Families:** Transmembrane

**Protein Pathways:** Wnt signaling pathway

**Gene Summary:** This gene encodes a member of the tetraspanin family. The encoded protein may be involved in mediating intestinal trefoil factor induced wound healing in the intestinal mucosa. Mutations in this gene are associated with neural tube defects. Alternate splicing results in multiple transcript variants. [provided by RefSeq, Feb 2010]

**Product images:**



Circular map for RG209024