

Product datasheet for **RG209021**

ADCY6 (NM_015270) Human Tagged ORF Clone

Product data:

Product Type:	Expression Plasmids
Product Name:	ADCY6 (NM_015270) Human Tagged ORF Clone
Tag:	TurboGFP
Symbol:	ADCY6
Synonyms:	AC6; LCCS8
Mammalian Cell Selection:	Neomycin
Vector:	pCMV6-AC-GFP (PS100010)
E. coli Selection:	Ampicillin (100 ug/mL)
ORF Nucleotide Sequence:	>RG209021 representing NM_015270 Red=Cloning site Blue=ORF Green=Tags(s)

TTTTGTAATACGACTCACTATAGGGCGGCCGGAATTCGTCGACTGGATCCGGTACCGAGGAGATCTGCC
GCC**CGATCGCC**

ATGTCATGGTTTGTGGCCTCCTGGTCCCTAAAGTGGATGAACGGAAAACAGCCTGGGGTGAACGCAATG
GGCAGAAGCGTTCGCGGCCTGGCACTCGGGCAGGTGGCTTCTGCACGCCCGCTATATGAGTGCCT
CCGGGATGCAGAGCCACCCAGCCCCACCCTGCGGGCCCCCTCGGTGCCCTGGCAGGATGACGCCTT
ATCCGGAGGGGGCGCCAGGCAAGGGCAAGGAGCTGGGGCTGCGGGCAGTGGCCCTGGGCTTCGAGGATA
CCGAGGTGACAACGACAGCGGGCGGACGGCTGAGGTGGCGCCGACCGGTGCCAGGAGTGGGCGATC
CTGCTGGCGCCGTCTGGTGCAGGTGTTCCAGTCAAGCAGTTCGGTTCGGCCAAGCTGGAGCGCCTGAC
CAGCGGTACTTCTCCAGATGAACCAGAGCAGCCTGACGCTGCTGATGGCGGTGCTGGTGTCTCACAG
CGGTGCTGCTGGCTTCCACGCCGACCCGCCGCCCTCAGCCTGCCTATGTGGCACTGTTGGCCTGTGC
CGCCGCCCTGTTCTGGGGCTCATGGTGGTGTGTAACCGGCATAGCTTCCGCCAGGACTCCATGTGGGTG
GTGAGTACGTGGTGTGGGCATCCTGGCGCAGTGCAGGTGGGGGGCTCTCGCAGCAGACCCGCGCA
GCCCTCTGCGGGCCTCTGGTGCCTGTGTTCTTTGTCTACATCGCCTACACGCTCCTCCCATCCGCAT
GGGGCTGCCGTCTCAGCGCCTGGGCTCTCCACCTTGCAATTTGATCTTGGCTGGCACTTAACCGT
GGTGATGCCTTCTTGAAGCAGCTCGGTGCCAATGTGCTGCTGTTCCCTGCAACCAACGTCATTGGCA
TCTGCACACACTATCCAGCAGAGGTGTCTCAGCGCCAGGCTTTTCCAGGAGACCCGCGTTACATCCAGGC
CCGGCTCCACCTGCAGCATGAGAATCGGCAGCAGGAGCGGCTGCTGCTGTCGGTATTGCCCCAGCACGTT
GCCATGGAGATGAAAGAAGACATCAACACAAAAAAGAAGACATGATGTTCCACAAGATCTACATACAGA
AGCATGACAATGTCAGCATCCTGTTTGCAGACATTGAGGGCTTACCAGCCTGGCATCCCAGTGCCTGC
GCAGGAGTGGTCATGACCCTGAATGAGCTCTTGGCCGGTTTGACAAGCTGGCTGCGGAGAATCACTGC
CTGAGGATCAAGATCTTGGGGACTGTTACTACTGTGTGTCAGGGCTGCCGGAGGCCCGGGCCGACCATG
CCCCTGCTGTGGAGATGGGGTAGACATGATTGAGGCCATCTCGCTGGTACGTGAGGTGACAGGTGT
GAATGTGAACATGCGCGTGGGCATCCACAGCGGGCGCTGCACTGCGGCGTCTTGGCTTGGGAAATGG



[View online »](#)

CAGTTCGATGTGTGGTCCAATGATGTGACCCTGGCCAACCACATGGAGGCAGGAGGCCGGGCTGGCCGCA
TCCACATCACTCGGGCAACACTGCAGTACCTGAACGGGGACTACGAGGTGGAGCCAGGCCGTGGTGGCGA
GCGCAACGCGTACCTCAAGGAGCAGCACATTGAGACTTTCCTCATCTCGGGGCCAGCCAGAAACGGAAA
GAGGAGAAGGCCATGCTGGCCAAGCTGCAGCGGACTCGGGCCAACCCATGGAAGGGCTGATGCCGCGCT
GGGTTCTGATCGTGCCTTCTCCCGACCAAGGACTCCAAGGCCCTCCGCCAGATGGGCATTGATGATTC
CAGCAAAGACAACCGGGGCACCCAAGATGCCCTGAACCCTGAGGATGAGGTGGATGAGTTCCTGAGCCGT
GCCATCGATGCCCGCAGCATTGATCAGCTGCGGAAGGACCATGTGCGCCGGTTTTCTGCTCACCTCCAGA
GAGAGGATCTTGAGAAGAAGTACTCCCGAAGGTGGATCCCGCTTCGGAGCCTACGTTGCCTGTGCCCT
GTTGGTCTTCTGCTTCATCTGCTTCATCCAGCTTCTCATCTTCCACACTCCACCCTGATGCTTGGGATC
TATGCCAGCATCTTCTGCTGCTGCTAATCACCGTGTGATCTGTGCTGTGTACTCTGTGGTTCTCTGT
TCCCTAAGGCCCTGCAACGTCTGTCCCGCAGCATTGTCCGCTCACGGGCACATAGCACCGCAGTTGGCAT
CTTTCCGCTCCTGCTTGTGTTACTTCTGCCATTGCCAACATGTTACCTGTAACCACACCCCCATACGG
AGCTGTGCAGCCCGATGCTGAATTTAACACCTGCTGACATCACTGCCTGCCACCTGCAGCAGCTCAATT
ACTCTCTGGGCCCTGGATGCTCCCTGTGTGAGGGCACCATGCCACCTGCAGCTTCTCTGAGTACTTCAT
CGGAACATGCTGCTGAGTCTCTTGCCAGCTCTGTCTTCTGCACATCAGCAGCATCGGAAGTTGGCC
ATGATCTTTGCTTGGGGCTCATCTATTTGGTGTGCTTCTGCTGGGTCCCCAGCCACCATCTTTGACA
ACTATGACCTACTGCTTGGCGTCCATGGCTTGGCTTCTTCCAATGAGACCTTTGATGGGCTGGAGTGTCC
AGCTGCAGGGAGGGTGGCCCTCAAATATATGACCCTGTGATTCTGCTGGTGTTCGCGTGGCGCTGAT
CTGCATGCTCAGCAGGTGGAGTCGACTGCCCGCTAGACTTCTCTGAAACTACAGGCAACAGGGGAGA
AGGAGGAGATGGAGGAGCTACAGGCATAACAACCGAGGCTGTGCATAACATTCTGCCAAGGACGTGGC
GGCCCACTTCTGGCCCGGAGCGCCGAATGATGAACTCTACTATCAGTCGTGTGAGTGTGTGGCTGTT
ATGTTTGCCTCCATTGCCAATTCTCTGAGTCTATGTGGAGCTGGAGGCAACAATGAGGGTGTGAGT
GCCTGCGGCTGCTCAACGAGATCATCGTACTTTGATGAGATTATCAGCGAGGAGCGGTTCCGGCAGCT
GGAAAAGATCAAGACGATTGGTAGCACCTACATGGCTGCCTCAGGGCTGAACGCCAGCACCTACGATCAG
GTGGGCCGCTCCACATCACTGCCTGGCTGACTACGCCATGCGGCTCATGGAGCAGATGAAGCACATCA
ATGAGCACTCCTTCAACAATTTCCAGATGAAGATTGGGCTGAACATGGGCCAGTCGTGGCAGGTGTGAT
CGGGGCTCGGAAGCCACAGTATGACATCTGGGGAACACAGTGAATGTCTCTAGTCGTATGGACAGCAG
GGGGTCCCCGACCGAATCCAGGTGACCACGGACCTGTACCAGTTCTAGCTGCCAAGGGCTACCAGCTGG
AGTGTGAGGGGTGGTCAAGGTGAAGGGCAAGGGGAGATGACCACCTACTTCTCAATGGGGGCCCGAG
CAGT

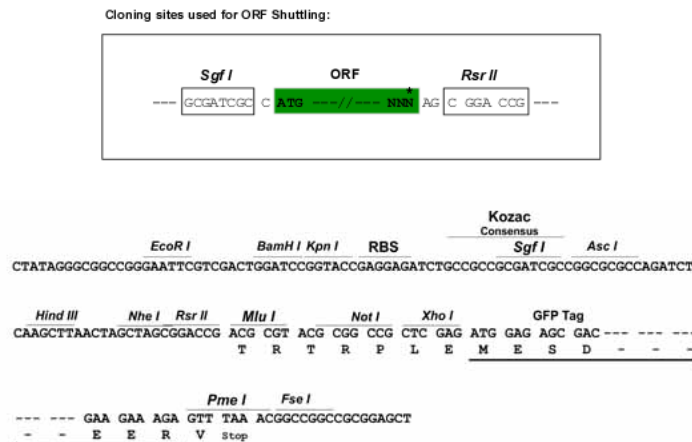
AGCGGACCGACGCGTACGCGGCCGCTCGAG - GFP Tag - GTTTAA

Protein Sequence: >RG209021 representing NM_015270
 Red=Cloning site Green=Tags(s)

```
MSWFSGLLVPKVDERKTAWGERNGQKRSRRRGTRAGGFCTPRYMSCLRDAEPPSPTAGPPRCPWQDDAF
IRRGPGKGGKELGLRAVALGFEDTEVTTTAGGTAEVAPDAVPRSGRSCWRRLVQVFQSKQFRSAKLERLY
QRYFFQMNQSSLTLLMAVLVLLTAVLLAFHAAPARPQPAYVALLACAAALFVGLMVV CNRHSFRQDSMWV
VSYVVLGILAAVQVGGALAADPRSPSAGLWCPVFFVYIAYTLLPIRMRAAVLSGLGLSTLHLILAWQLNR
GDAFLWKQLGANVLLFLCTNVIGICTHYPAEVSQRQAFQETRGYIQARLHLQHENRQERLLL SVLPQHV
AMEMKEDINTKKEDMMFHKIYIQKHDNVSILFADIEGFTSLASQCTAQELVMTLNELFARFDKLAENHC
LRIKILGDCYCYVSGLPEARADHAHCCVEMGVDMIEAISLVREVTGVNVNMRVGIHSGRVHCGVLGRKW
QFDVWSNDVTLANHMEAGGRAGRIHITRATLQYLN GDYEVEPGRGGERNAYLKEQHIETFLILGASQKRK
EEKAMLAKLQRTRANSMEGLMPRWVPDRAF SRTKDSKA FRQMIDDSSKDNRTQDALNPEDEVDFLSR
AIDARSIDQLRKDHVRRFLLTFQREDLEKKYSRKVDPRFGAYVACALLVFCFICFIQLLIFPHSTLMGI
YASIFLLLLITVLC AVYSCGSLFPKALQRLSRSIVRSRAHSTAVGIFSVLLVFTSAIANMFTCNHTPIR
SCAARMLNLPADITACHLQQLNYSGLDAPLCEGTMPTCSFPEYFIGNMLLSLLASSVFLHISSIGKLA
MIFVLGLIYLVLLLLGPPATIFDNYDLLGVHGLASSNETFDGLD CPAAGRVALKYMTPVILLVFALALY
LHAQQVESTARLDFLWKLQATGEKEEMEELQAYNRLLHNILPKDVA AHFLARERRNDELYYQSCECVAV
MFASIANFSEFYVELEANNEGVECLRLLEIIADFDEIISEERFRQLEKIKTIGSTYMAASGLNASTYDQ
VGRSHITALADYAMRLMEQMKHINEHSFNNFQMKIGLNMGPVVAGVIGARKPQYDIWGN TVNVSSRMDST
GVPDRIQVTTDL YQVLAAGYQLECRGVVVKVKGKEMTTYFLNGGPSS
```

SGPTRRRLE - GFP Tag - V

Restriction Sites: SgfI-RsrII
Cloning Scheme:



ACCN: NM_015270
ORF Size: 3504 bp

OTI Disclaimer: Due to the inherent nature of this plasmid, standard methods to replicate additional amounts of DNA in E. coli are highly likely to result in mutations and/or rearrangements. Therefore, OriGene does not guarantee the capability to replicate this plasmid DNA. Additional amounts of DNA can be purchased from OriGene with batch-specific, full-sequence verification at a reduced cost. Please contact our customer care team at custsupport@origene.com or by calling 301.340.3188 option 3 for pricing and delivery.

The molecular sequence of this clone aligns with the gene accession number as a point of reference only. However, individual transcript sequences of the same gene can differ through naturally occurring variations (e.g. polymorphisms), each with its own valid existence. This clone is substantially in agreement with the reference, but a complete review of all prevailing variants is recommended prior to use. [More info](#)

OTI Annotation: This clone was engineered to express the complete ORF with an expression tag. Expression varies depending on the nature of the gene.

Components: The ORF clone is ion-exchange column purified and shipped in a 2D barcoded Matrix tube containing 10ug of transfection-ready, dried plasmid DNA (reconstitute with 100 ul of water).

Reconstitution Method:

1. Centrifuge at 5,000xg for 5min.
2. Carefully open the tube and add 100ul of sterile water to dissolve the DNA.
3. Close the tube and incubate for 10 minutes at room temperature.
4. Briefly vortex the tube and then do a quick spin (less than 5000xg) to concentrate the liquid at the bottom.
5. Store the suspended plasmid at -20°C. The DNA is stable for at least one year from date of shipping when stored at -20°C.

RefSeq: [NM_015270.5](#)

RefSeq Size: 6583 bp

RefSeq ORF: 3507 bp

Locus ID: 112

UniProt ID: [O43306](#)

Cytogenetics: 12q13.12

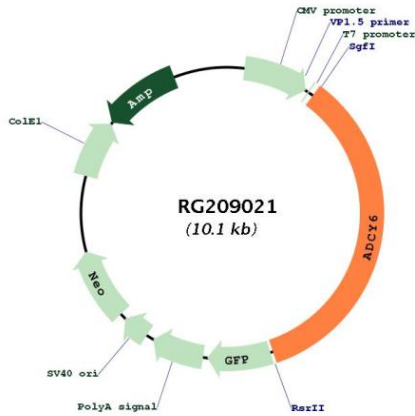
Domains: CYCc

Protein Families: Druggable Genome, Transmembrane

Protein Pathways: Chemokine signaling pathway, Dilated cardiomyopathy, Gap junction, GnRH signaling pathway, Melanogenesis, Oocyte meiosis, Progesterone-mediated oocyte maturation, Purine metabolism, Taste transduction, Vascular smooth muscle contraction

Gene Summary:

This gene encodes a member of the adenylyl cyclase family of proteins, which are required for the synthesis of cyclic AMP. All members of this family have an intracellular N-terminus, a tandem repeat of six transmembrane domains separated by a cytoplasmic loop, and a C-terminal cytoplasmic domain. The two cytoplasmic regions bind ATP and form the catalytic core of the protein. Adenylyl cyclases are important effectors of transmembrane signaling pathways and are regulated by the activity of G protein coupled receptor signaling. This protein belongs to a small subclass of adenylyl cyclase proteins that are functionally related and are inhibited by protein kinase A, calcium ions and nitric oxide. A mutation in this gene is associated with arthrogyposis multiplex congenita. [provided by RefSeq, May 2015]

Product images:


Circular map for RG209021