

Product datasheet for **RG208999**

MFAP4 (NM_002404) Human Tagged ORF Clone

Product data:

Product Type: Expression Plasmids
Product Name: MFAP4 (NM_002404) Human Tagged ORF Clone
Tag: TurboGFP
Symbol: MFAP4
Mammalian Cell Selection: Neomycin
Vector: pCMV6-AC-GFP (PS100010)
E. coli Selection: Ampicillin (100 ug/mL)
ORF Nucleotide Sequence: >RG208999 representing NM_002404
 Red=Cloning site Blue=ORF Green=Tags(s)

TTTTGTAATACGACTCACTATAGGGCGGCCGGAATTCGTCGACTGGATCCGGTACCGAGGAGATCTGCC
 GCC**CGATCGCC**

ATGAAGGCACTCCTGGCCCTGCCGCTGCTGCTTCTCTCCACGCCCCGTGTGCCCCCAAGTCTCCG
 GGATCCGAGGAGATGCTCGGAGAGTTTTGCCTTCAGCAACCCCTGGACTGTGACGACATCTATGCCCA
 GGGCTACCAGTCAGACGGCGTGTACCTCATCTACCCCTCGGGCCCCAGTGTGCCTGTGCCGCTCTTCTGT
 GACATGACCACCGAGGGCGGAAGTGGACGGTTTTCCAGAAGAGATTCAATGGCTCAGTAAGTTTCTTCC
 CGGCTGGAATGACTACAAGCTGGGCTTCGGCCGTGCTGATGGAGAGTACTGGCTGGGCTGCAGAACAT
 GCACCTCTGACACTGAAGCAGAAGTATGAGCTGCGAGTGGACTTGGAGGACTTTGAGAACAACACGGCC
 TATGCCAAGTACGCTGACTTCTCCATCTCCCCAACGCGTCCAGCGCAGAGGAGGATGGCTACACCCCTCT
 TTGTGGCAGGCTTTGAGGATGGCGGGTAGGTGACTCCCTGTCCTACCACAGTGGCCAGAAGTTCTCTAC
 CTTGACCGGGACCAGGACCTTTTGTGCAGAAGTGGCAGCTCTCTCCTCAGGACCTTCTGGTTCCGC
 AGCTGCCACTTTGCCAACCTCAATGGCTTCTACCTAGGTGGTCCCACCTCTCTTATGCCAATGGCATCA
 ACTGGGCCAGTGAAGGCTTCTACTACTCCCTCAAACGCACTGAGATGAAAATCCGCCGGCC

ACGCGTACGCGGCCGCTCGAG - GFP Tag - GTTTAA

Protein Sequence: >RG208999 representing NM_002404
 Red=Cloning site Green=Tags(s)

MKALLALPLLLLLSTPPCAPQVSGIRGDALERFCLQQPLDCDDIYAQGYQSDGVYLIYPSGSPVVPVFC
 DMTTEGGKWTVFQKRFNGSVSFFRGNWYKLGFRADGEYWLGLQNMHLLTLKQKYELRVDLEDNFENNTA
 YAKYADFSISPNAVSAEEDGYTLFVAGFEDGGVGDLSYHSGQKFSDFDRDQDLFVQNCALSSGAFWFR
 SCHFANLNGFYLGSHLSYANGINWAQWKGFYSLKRTEMKIRRA

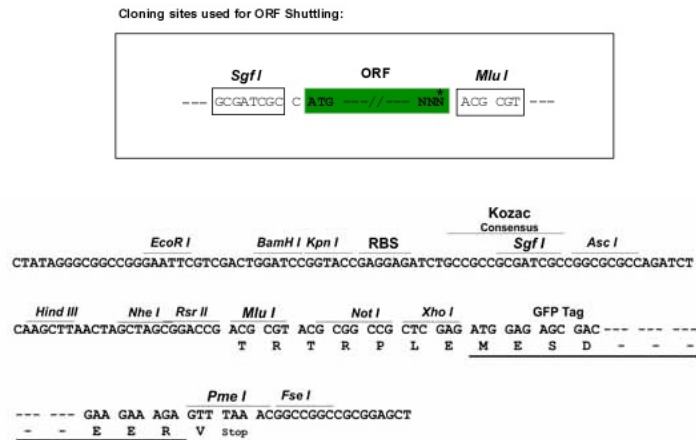
TRTRPLE - GFP Tag - V



[View online »](#)

Restriction Sites: SgfI-MluI

Cloning Scheme:



ACCN: NM_002404

ORF Size: 765 bp

OTI Disclaimer: The molecular sequence of this clone aligns with the gene accession number as a point of reference only. However, individual transcript sequences of the same gene can differ through naturally occurring variations (e.g. polymorphisms), each with its own valid existence. This clone is substantially in agreement with the reference, but a complete review of all prevailing variants is recommended prior to use. [More info](#)

OTI Annotation: This clone was engineered to express the complete ORF with an expression tag. Expression varies depending on the nature of the gene.

Components: The ORF clone is ion-exchange column purified and shipped in a 2D barcoded Matrix tube containing 10ug of transfection-ready, dried plasmid DNA (reconstitute with 100 ul of water).

Reconstitution Method:

1. Centrifuge at 5,000xg for 5min.
2. Carefully open the tube and add 100ul of sterile water to dissolve the DNA.
3. Close the tube and incubate for 10 minutes at room temperature.
4. Briefly vortex the tube and then do a quick spin (less than 5000xg) to concentrate the liquid at the bottom.
5. Store the suspended plasmid at -20°C. The DNA is stable for at least one year from date of shipping when stored at -20°C.

RefSeq: [NM_002404.1](#), [NP_002395.1](#)

RefSeq Size: 1830 bp

RefSeq ORF: 768 bp

Locus ID: 4239

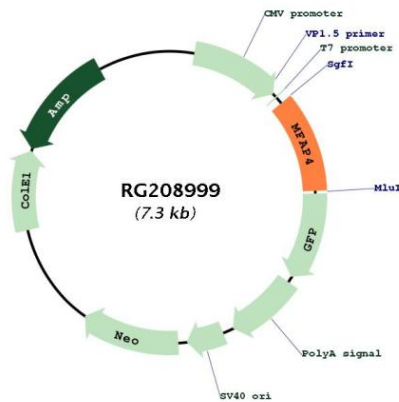
UniProt ID: [P55083](#)

Cytogenetics: 17p11.2

Protein Families: Druggable Genome, Secreted Protein

Gene Summary: This gene encodes a protein with similarity to a bovine microfibril-associated protein. The protein has binding specificities for both collagen and carbohydrate. It is thought to be an extracellular matrix protein which is involved in cell adhesion or intercellular interactions. The gene is located within the Smith-Magenis syndrome region. Two transcript variants encoding different isoforms have been found for this gene. [provided by RefSeq, Nov 2010]

Product images:



Circular map for RG208999