

Product datasheet for **RG208969**

Dymeclin (DYM) (NM_017653) Human Tagged ORF Clone

Product data:

| | |
|---------------------------|---|
| Product Type: | Expression Plasmids |
| Product Name: | Dymeclin (DYM) (NM_017653) Human Tagged ORF Clone |
| Tag: | TurboGFP |
| Symbol: | DYM |
| Synonyms: | DMC; SMC |
| Mammalian Cell Selection: | Neomycin |
| Vector: | pCMV6-AC-GFP (PS100010) |
| E. coli Selection: | Ampicillin (100 ug/mL) |



[View online »](#)

ORF Nucleotide
Sequence:

>RG208969 representing NM_017653
Red=Cloning site Blue=ORF Green=Tags(s)

TTTTGTAATACGACTCACTATAGGGCGGCCGGAATTCGTCGACTGGATCCGGTACCGAGGAGATCTGCC
GCC**CGGATCGCC**

ATGGGATCGAATAGCAGCAGAATCGGCGATCTTCTAAAAATGAGTACTTGAAAAAGTTATCAGGCACGG
AATCTATCTCTGAGAATGACCCGTTCTGGAATCAGCTTCTCTCATTTTCTTCCCTGCACCAACTAGCAG
TAGTGAGTTGAAACTCTTGGAGGAAGCAACCATTTTCAGTCTGCAGGTCATTAGTTGAAAAAATCTCTCGA
ACAGGAAATCTTGGTGCCTAATTAAGGTCTTCTTTCTAGAACCAAGAACTAAAACTTTCAGCAGAAT
GTCAGAACCACATCTTCAATTTGGCAGACACACAATGCTTTGTTTATTATTTGCTGTTTGGTAAAAGTGT
CATCTGTCAGATGTCAGAGGAGGAATTACAACCTCATTCTTACTTATGAAGAAAAATCTCTGGCAATTAC
AGTTCTGACTCAGAAGATCTTTTGAAGAATTGCTGTGCTGTTTGTATGCAGTTGATCACTGATATCCAC
TCTTAGATATTACATATGAAATATCAGTAGAAGCTATATCAACAATGGTTGTTTTCTTTCTGCCAACT
CTTCCACAAAGAAGTTTTGCGACAGAGCATCAGCCACAAGTATTTGATGCGAGGTCATGTCTTCCATAC
ACCAGCAAACCTTGAAGACCTTATTATATAACTTTATCAGACAAGAAAAGCCACCTCCTCCAGGGGCC
ATGTTTTCCCTCAGCAGTCGGATGGGGGAGGACTGCTTTATGGACTTGCATCAGGAGTAGCAACAGGACT
CTGGACTGTCTTCACTAGGTGGTGTGGGCAGCAAAGCGGCTGCCTCTCCAGAGCTTCTTCCCTCTG
GCCAACAGAGTCTCTGCTTCTGCTGGTGTGGCCAATCTGACAGATGCCTCAGATGCGCCAAACCCCT
ACAGACAAGCCATTATGCTCTTCAAGAACACACAAGATAGCAGTCCTTCCCTCATCAATTCACATGC
CTTCCAGATCACTTTAATAGTTGTACACAGCTCTTTGTGAACAGCAGACATCTGATCAAGCAACTCTC
CTCTTGATACCTTGTCCATCAAAATAGTAATATTAGAACATACATGTTGGCTCGCACAGATATGAAA
ATCTTGTTTTACCAATTTGAGATTCTGTATCATGTTGAAGAAAGGAATTCACACCATGTGATATGGC
CCTTATAATATTGTTGATCCTTACGGAAGATTATGGCTTCAACAGATCCATTCATGAAGTGATACTAAAA
AATATTACTTGGTATTCAGAACGAGTTTTAACTGAAATCTCCTTGGGAGTCTCCTGATCCTGGTGGTAA
TAAGAACCATTCAATACAACATGACTAGGACACGAGACAAGTACCTTACACAAAATTGTTTGGCAGCTTT
AGCAAATATGTCGGCACAGTTTCGTTCTCTCCATCAGTATGCTGCCAGAGGATCATCAGTTTATTTTCT
TTGCTGTCTAAAAACACAACAAAGTTCTGGAACAAGCCACACAGTCCTTGAGAGGTTGCTGAGTTCTA
ATGATGTTCTCTACCAGATTATGCACAAGACCTAAATGTCATTGAAGAAGTGATTGCAATGATGTTAGA
GATCATCAACTCCTGCCTGACAAATCCCTTACCACAACCCAACTTGGTATACGCCCTGCTTTACAAA
CGCGATCTCTTTGAACAATTTGAACTCATCTTCATTTTCAGGATATAATGCAAAATATTGATCTGGTGA
TCTCCTTCTTTAGCTCAAGGTTGCTGCAAGCTGGAGCTGAGCTGTGAGTGGAAACGGGTCCTGAAATCAT
TAAGCAAGGCGCTGTTGGCTGCCCAAAGACAGACTGAAGAAATTTCCAGAATTGAAATCAAATATGTC
GAAGAGGAGCAGCCCAGGAGTTTTTATCCCCTATGTCTGGTCTCTTGTCTACAACCTCAGCAGTCGGCC
TGTAAGGAAATCCACAGGACATCCAGCTGTTCCACATGGATTCCGAC

ACGGTACGCGGCCGCTCGAG - GFP Tag - GTTAA

Protein Sequence: >RG208969 representing NM_017653
 Red=Cloning site Green=Tags(s)

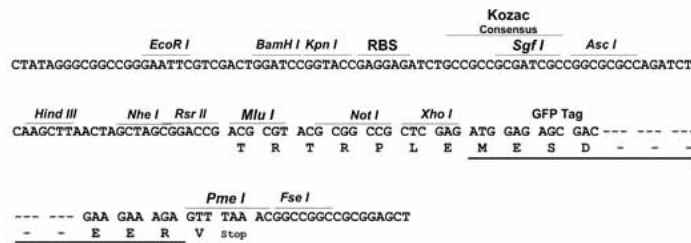
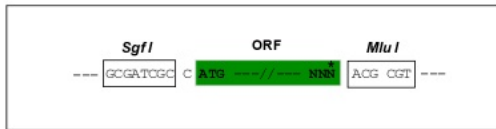
MGSNSSRIGDLPKNEYLKKLSGTEISENDPFWNQLLSFSFPAPTSSSELKLEEATISVCRSLVENNPR
 TGNL GALIKVFLSRTKELKLSAECQNHIFIWQTHNALFIICLLKVFICQMSEELQLHFTYEEKSPGNY
 SSDSEDLLEELLCCMLQITDIPLLDITYEISVEAISTMVVFLSCQLFHKEVLRQSI SHKYL MRGPCLPY
 TSKLVKTL LYNFIRQEKP PPGAHVFPQQSDGGGLLYGLASGVATGLWTVFTLGGVGSKAAASPELSSPL
 ANQSL LLLVLANLTDASDAPNPYRQA IMSFKNTQDSSFPSSIPHAFQINFNSLYTALCEQQTSDQATL
 LLYTLLHQNSNIRTYMLARTDMENLVLP ILEILYHVEERNSHHVYMALIILLILTEDYGFNRSIHEVILK
 NITWYSERVLTEISLGSLLILVVIRTIQYNMTRTRDKYLHTNCLAALANMSAQFRSLHQYAAQRIISLFS
 LLSKKNKLVLEQATQSLRGLSSNDVPLPDYAQDLNVIEEVIRMMLEIINSCLTNSLHHNPNLVYALLYK
 RDLFEQFRTHPSFQDIMQNIDLVISFFSSRLQAGAELSERVLEI IKQGVVALPKDR LKKFP ELKFKYV
 EEEQPEEFFIPYVWSLVYNSAVGLYWNPDQIQLF TMSD

TRTRPLE - GFP Tag - V

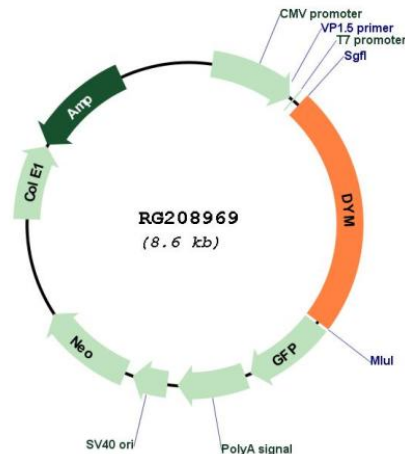
Restriction Sites: SgfI-MluI

Cloning Scheme:

Cloning sites used for ORF Shuttling:



Plasmid Map:



ACCN: NM_017653

ORF Size: 2007 bp

OTI Disclaimer: The molecular sequence of this clone aligns with the gene accession number as a point of reference only. However, individual transcript sequences of the same gene can differ through naturally occurring variations (e.g. polymorphisms), each with its own valid existence. This clone is substantially in agreement with the reference, but a complete review of all prevailing variants is recommended prior to use. [More info](#)

OTI Annotation: This clone was engineered to express the complete ORF with an expression tag. Expression varies depending on the nature of the gene.

Components: The ORF clone is ion-exchange column purified and shipped in a 2D barcoded Matrix tube containing 10ug of transfection-ready, dried plasmid DNA (reconstitute with 100 ul of water).

Reconstitution Method:

1. Centrifuge at 5,000xg for 5min.
2. Carefully open the tube and add 100ul of sterile water to dissolve the DNA.
3. Close the tube and incubate for 10 minutes at room temperature.
4. Briefly vortex the tube and then do a quick spin (less than 5000xg) to concentrate the liquid at the bottom.
5. Store the suspended plasmid at -20°C. The DNA is stable for at least one year from date of shipping when stored at -20°C.

RefSeq: [NM_017653.2](#), [NP_060123.2](#)

RefSeq Size: 2644 bp

RefSeq ORF: 2010 bp

Locus ID: 54808

UniProt ID: [Q7RTS9](#)

Cytogenetics: 18q21.1

Gene Summary: This gene encodes a protein which regulates Golgi-associated secretory pathways that are essential to endochondral bone formation during early development. This gene is also believed to play a role in early brain development. This gene is widely expressed in embryos and is particularly abundant in chondrocytes and brain tissues. It encodes a peripheral membrane protein which shuttles between the cytosol and Golgi complex. Mutations in this gene are associated with two types of recessive osteochondrodysplasia: Dyggve-Melchior-Clausen (DMC) dysplasia and Smith-McCort (SMC) dysplasia. [provided by RefSeq, Jun 2017]