

Product datasheet for **RG208968**

PSKH1 (NM_006742) Human Tagged ORF Clone

Product data:

| | |
|---------------------------|---|
| Product Type: | Expression Plasmids |
| Product Name: | PSKH1 (NM_006742) Human Tagged ORF Clone |
| Tag: | TurboGFP |
| Symbol: | PSKH1 |
| Mammalian Cell Selection: | Neomycin |
| Vector: | pCMV6-AC-GFP (PS100010) |
| E. coli Selection: | Ampicillin (100 ug/mL) |
| ORF Nucleotide Sequence: | >RG208968 representing NM_006742 Red=Cloning site Blue=ORF Green=Tags(s) |

TTTTGTAATACGACTCACTATAGGGCGGCCGGAATTCGTCGACTGGATCCGGTACCGAGGAGATCTGCC
GCC**CGATCGCC**

ATGGGCTGTGGGACAAGCAAGGTCCTTCCCAGCCACCCAAGGATGTCCAGCTGGATCTGGTCAAGAAGG
TGGAGCCCTTCAGTGGCACTAAGAGTGACGTGTACAAGCACTTCATCACAGAGGTGGACAGTGTGGCCC
TGTCAAAGCCGGGTTCCCAGCAGCAAGTCAGTATGCACACCCCTGCCCGGTCCCCGACTGCTGGCCAC
ACGGAGCCTCCCTCAGAACCACCGCAGGGCCAGGGTAGTAAAGTACAGGGCCAAGTTTGACCCACGTG
TTACAGTAAGTATGACATCAAGGCCCTAATTGGCCGAGGCAGCTTCAGCCGAGTGGTACGTGTAGAGCA
CCGGGAACCCGGCAGCGTATGCCATCAAGATGATTGAGACCAAGTACCGGGAGGGCGGGAGGTGTGT
GAGTCGGAGCTGCGTGTGCTGCGTCGGGTGCGTATGCCAACATCATCCAGCTGGTGGAGGTGTTGAGAG
CACAGGAGCGGGTGTACATGGTGTGGAGCTGGCCACTGGTGGAGAGCTCTTTGACCGCATCATTGCCAA
GGGCTCCTTACCAGCGTGACGCCACGCGGGTGTGCGATGGTGTGGATGGCGTCCGGTATCTGCAT
GCACTGGGCATCACACCCGAGACCTCAAACCTGAGAATCTGCTCTACTACCATCCGGGCACTGACTCCA
AGATCATCATCCGACTTCGGCCTGGCCAGTGTGCGAAGAAGGGTGTGACTGCTTGATGAAGACCAC
CTGTGGCAGCCTGAGTACATTGCCCCAGAAGTCTGGTCCGCAAGCCATACACCAACTCAGTGGACATG
TGGGCGCTGGGCGTCATTGCCTACATCCTACTCAGTGGCACCATGCCGTTTGAGGATGACAACCGTACCC
GGCTGTACCGGCAGATCCTCAGGGGCAAGTACAGTTACTCTGGGAGCCCTGGCCTAGTGTGTCCAACT
GGCCAAGGACTTCATTGACCGCCTGCTGACAGTGGACCCTGGAGCCCGTATGACTGCACTGCAGGCCCTG
AGGCACCCGTGGGTGGTGTGAGCATGGCTGCCTTTCATCCATGAAGAACCTGCACCGCTCCATATCCCAGA
ACCTCCTTAAACGTGCCTCCTCGCGTGCAGAGCACCAATCTGCCAGTCCACGCGTTCCAGCCGCTC
CACAGCTCCAATAAGTACGCGGTGTGCGGGAACGGGAGCTGCGGGAGCTCAACTGCGCTACCAGCAG
CAATAAATGGC

AGCGGACCGACGCGTACGCGGCCGCTCGAG - GFP Tag - GTTTAA



[View online »](#)

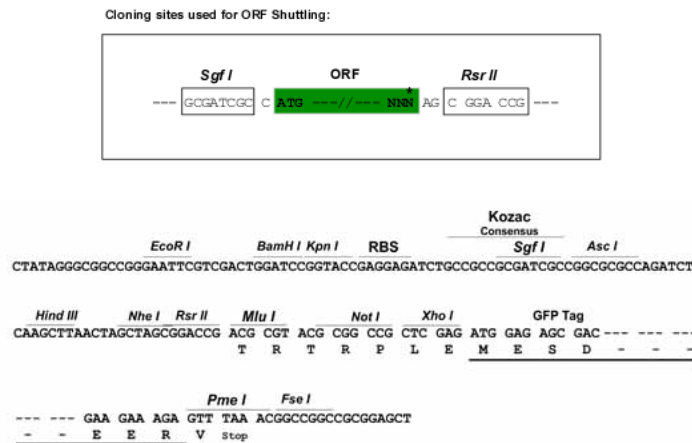
Protein Sequence: >RG208968 representing NM_006742
Red=Cloning site Green=Tags(s)

MGCGTSKVLPEPPKDVQLDLVKKVEPFSGTKSDVYKHFITEVDSVGPVKAGFPAASQYAHPCPGPPTAGH
 TEPPSEPPRRARVAKYRAKFDPRVTAKYDIKALIGRGSFSRVVREHRATROPYAIAKMIETKYREGREVC
 ESELRVLRRVRHANI IQLVEVFETQERVYVMELATGGELFDRI IAKGSF TERDATTRVLQMLDGVRYLH
 ALGITHRDLKPENLLYHPGTD SKIIITDFGLASARKKGGDDCLMKTTTCGTPEYIAPEVLVRKPYTNSVDM
 WALGVIAIYILLSGTMPFEEDNRTRL YRQILRGKYSYSGEPWPSVSNLAKDFIDRLLTVDPGARM TALQAL
 RHPWVVSMAASSMKNLHRSISQNL LKRASSRCQSTKSAQSTRSSRSTRSNKSRVRERELRELNLRYQQ
 QYNG

SGPTRRRLE – GFP Tag – V

Restriction Sites: SgfI-RsrII

Cloning Scheme:



ACCN: NM_006742

ORF Size: 1272 bp

OTI Disclaimer: The molecular sequence of this clone aligns with the gene accession number as a point of reference only. However, individual transcript sequences of the same gene can differ through naturally occurring variations (e.g. polymorphisms), each with its own valid existence. This clone is substantially in agreement with the reference, but a complete review of all prevailing variants is recommended prior to use. [More info](#)

OTI Annotation: This clone was engineered to express the complete ORF with an expression tag. Expression varies depending on the nature of the gene.

Components: The ORF clone is ion-exchange column purified and shipped in a 2D barcoded Matrix tube containing 10ug of transfection-ready, dried plasmid DNA (reconstitute with 100 ul of water).

Reconstitution Method:

1. Centrifuge at 5,000xg for 5min.
2. Carefully open the tube and add 100ul of sterile water to dissolve the DNA.
3. Close the tube and incubate for 10 minutes at room temperature.
4. Briefly vortex the tube and then do a quick spin (less than 5000xg) to concentrate the liquid at the bottom.
5. Store the suspended plasmid at -20°C. The DNA is stable for at least one year from date of shipping when stored at -20°C.

RefSeq: [NM_006742.3](#)

RefSeq Size: 3460 bp

RefSeq ORF: 1275 bp

Locus ID: 5681

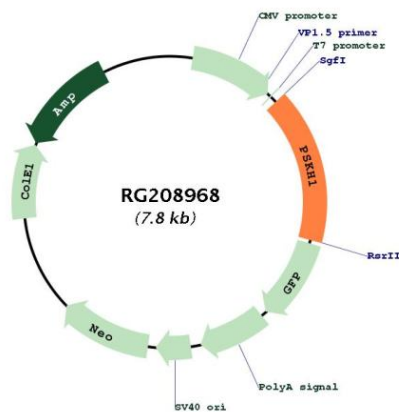
UniProt ID: [P11801](#)

Cytogenetics: 16q22.1

Protein Families: Druggable Genome, Protein Kinase

Gene Summary: May be a SFC-associated serine kinase (splicing factor compartment-associated serine kinase) with a role in intranuclear SR protein (non-snRNP splicing factors containing a serine/arginine-rich domain) trafficking and pre-mRNA processing.[UniProtKB/Swiss-Prot Function]

Product images:



Circular map for RG208968