

## Product datasheet for **RG208953**

### PTPN5 (NM\_006906) Human Tagged ORF Clone

#### Product data:

Product Type:	Expression Plasmids
Product Name:	PTPN5 (NM_006906) Human Tagged ORF Clone
Tag:	TurboGFP
Symbol:	PTPN5
Synonyms:	PTPSTEP; STEP; STEP61
Mammalian Cell Selection:	Neomycin
Vector:	pCMV6-AC-GFP (PS100010)
E. coli Selection:	Ampicillin (100 ug/mL)



[View online »](#)

**ORF Nucleotide Sequence:**

>RG208953 representing NM\_006906  
 Red=Cloning site Blue=ORF Green=Tags(s)

TTTTGTAATACGACTCACTATAGGGCGGCCGGGAATTCGTCGACTGGATCCGGTACCGAGGAGATCTGCC  
 GCC**CGGATCGCC**

ATGAATTATGAGGAGCCAGGAGTGAGAGAGAGAACCACGCTGCTGATGACTCCGAGGGAGGGCCCTGG  
 ACATGTGCTGCAGTGAGAGGCTACCGGGTCTCCCCAGCCGATAGTGATGGAGGCACTGGACGAGGCTGA  
 AGGGCTCCAGGACTCACAGAGAGAGATGCCGCCACCCCTCCTCCCTCGCCGCCCTCAGATCCAGCTCAG  
 AAGCCACCACCTCGAGGCGCTGGGAGCCACTCCCTCACTGTCAGGAGCAGCCTGTGCCTGTTTCGCTGCCT  
 CACAGTTCCTGCTGCTGTGGGGTCTCTGGTTCAGCGGTTATGGCCACATCTGGTACAGAACGCCAC  
 AAACCTCGTCTCCTTTTGTGACGCTCCTGAAACAGCTGGAACCCACGGCCTGGCTTGACTCTGGGACG  
 TGGGGAGTCCCAGTCTGCTGCTGGTCTTTCTGTCGTGGGCTGGTCTCGTTACCACCCTGGTGTGGC  
 ACCTCCTGAGGACACCCAGAGCCACCCACCCACTGCCCTGAGGACAGGCGCCAGTCACTGAGCCG  
 CCAGCCCTCCTTACCTACTCAGAGTGGATGGAGGAGAAGATCGAGGATGACTTCTGGACCTCGACCCG  
 GTGCCGAGACTCCTGTGTTGATTGTGTGATGGACATCAAGCCTGAGGCTGACCCACCTCACTACCCG  
 TCAAGTCCATGGGTCTGCAGGAGAGGAGGGTTCCAATGTCTCCCTGACCTGGACATGTGCACTCCGGG  
 CTGCAACGAGGAGGGCTTTGGCTATCTCATGTCCACAGTGAGGAGTCCGCCCGGAGTACCTGCTCAGC  
 GCCTCCCGTGTCTCCAAGCAGAAGAGCTTCATGAAAAGGCCCTGGACCTTTCTGCTGCAGGCGGAAT  
 TCTTTGAAATCCCATGAACTTTGTGGATCCGAAAAGAGTACGACATCCCTGGGCTGGTGCAGGGAACCG  
 GTACAAAACATACTTCCCAACCTCACAGCAGAGTGTGTCTGACCTCACCAGACCCTGACGACCCTCTG  
 AGTTCCTACATCAATGCCAACTACATCCGGGCTATGGTGGGAGGAGAAGGTGTACATCGCCACTCAGG  
 GACCCATCGTCAGCAGGTCGCGACTTCTGGCGCATGGTGTGGCAGGAGCACAGCCCATCATTGTGAT  
 GATCACCAACATCGAGGAGATGAACGAGAAATGCACCGAGTATTGGCCGGAGGAGCAGGTGGCGTACGAC  
 GGTGTTGAGTACTGTGCAAAAAGTATTACACGAGGATTACCGGCTGCGACTCATCTCCCTCAAGA  
 GTGGGACTGAGGAGCGAGGCTGAAGCATTACTGGTTCACATCCTGGCCCGACAGAAGACCCAGACCG  
 GGCCCCCCTACTCCTGCACCTGGTGCAGGAGGTGGAGGAGGAGCCAGCAGGAGGGGCCCTACTGTGCC  
 CCCATCATCGTCCACTGCAGTGCAGGGATTGGGAGGACCGGCTGCTTATTGCCACCAGCATCTGCTGCC  
 AGCAGCTGCGGCAGGAGGTGTAGTGGACATCCTGAAGACCACGTGCCAGCTCCGTGAGGACAGGGGCGG  
 CATGATCCAGACATGCGAGCAGTACCAGTTTGTGACCACGTGATGACCTCTACGAAAAGCAGCTGTCC  
 CACCAGTCCCAGAA

**ACGCGT**ACGCGGCCGCTCGAG - GFP Tag - GTTTAA

**Protein Sequence:**

>RG208953 representing NM\_006906  
 Red=Cloning site Green=Tags(s)

MNYEGARSERENHAADDSEGGALDMCCSERLPGLPQPIVMEALDEAEGLQDSQREMPPPPPSPSPDPAQ  
 KPPPRGAGSHSLTVRSSLCLFAASQFLLACGVLWFSYGHISQWQVATNLVSSLLTLLKQLEPTAWLDSGT  
 WGVPSLLLVLVSVGLVLTTLVWHLRTPPEPPTPLPPEDRRQSVSRQPSFTYSEWMEEKIEDDFLDLDP  
 VPETPVFDCVMDIKPEADPTSLTVKSMGLQERRGSNVSLTDMCTPGCNEEGFGLMSPREESAREYLLS  
 ASRVLQAEELHEKALDPFLLQAEFFEIPMNFVDPKEYDIPGLVRKNRYKTIILPNPHSRVCLTSPDPDDPL  
 SSYINANYIRGYGEEKVYIATQGPVIVSTVADFWRMVWQEHPTIIVMITNIEEMNEKCTEYWPPEQVAYD  
 GVEITVQKVIHTEDYRLRLISLKSGETEERGLKHYWFTSWPDQKTPDRAPLLHLVREVEEAQQEGPHCA  
 PIIVHCSAGIGRTGCFIATSICCCQLRQEGVVDILKTTCCQLRQDRGGMIIQTCEQYQFVHHVMSLYEKQLS  
 HQSPE

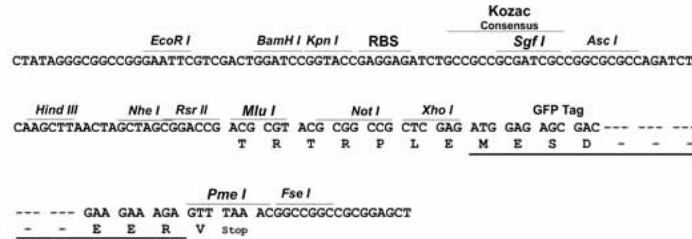
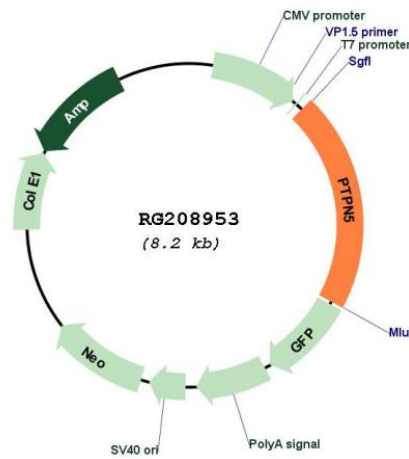
**TRTRPLE** - GFP Tag - V

**Restriction Sites:**

SgfI-MluI

**Cloning Scheme:**

Cloning sites used for ORF Shutting:


**Plasmid Map:**


ACCN: NM\_006906  
 ORF Size: 1695 bp

<b>OTI Disclaimer:</b>	The molecular sequence of this clone aligns with the gene accession number as a point of reference only. However, individual transcript sequences of the same gene can differ through naturally occurring variations (e.g. polymorphisms), each with its own valid existence. This clone is substantially in agreement with the reference, but a complete review of all prevailing variants is recommended prior to use. <a href="#">More info</a>
<b>OTI Annotation:</b>	This clone was engineered to express the complete ORF with an expression tag. Expression varies depending on the nature of the gene.
<b>Components:</b>	The ORF clone is ion-exchange column purified and shipped in a 2D barcoded Matrix tube containing 10ug of transfection-ready, dried plasmid DNA (reconstitute with 100 ul of water).
<b>Reconstitution Method:</b>	<ol style="list-style-type: none"><li>1. Centrifuge at 5,000xg for 5min.</li><li>2. Carefully open the tube and add 100ul of sterile water to dissolve the DNA.</li><li>3. Close the tube and incubate for 10 minutes at room temperature.</li><li>4. Briefly vortex the tube and then do a quick spin (less than 5000xg) to concentrate the liquid at the bottom.</li><li>5. Store the suspended plasmid at -20°C. The DNA is stable for at least one year from date of shipping when stored at -20°C.</li></ol>
<b>RefSeq:</b>	<a href="#">NM_006906.1</a> , <a href="#">NP_008837.1</a>
<b>RefSeq Size:</b>	3201 bp
<b>RefSeq ORF:</b>	1698 bp
<b>Locus ID:</b>	84867
<b>UniProt ID:</b>	<a href="#">P54829</a>
<b>Cytogenetics:</b>	11p15.1
<b>Protein Families:</b>	Druggable Genome, Phosphatase, Transmembrane
<b>Protein Pathways:</b>	MAPK signaling pathway
<b>Gene Summary:</b>	May regulate the activity of several effector molecules involved in synaptic plasticity and neuronal cell survival, including MAPKs, Src family kinases and NMDA receptors. [UniProtKB/Swiss-Prot Function]