

Product datasheet for **RG208948**

C1S (NM_201442) Human Tagged ORF Clone

Product data:

Product Type:	Expression Plasmids
Product Name:	C1S (NM_201442) Human Tagged ORF Clone
Tag:	TurboGFP
Symbol:	C1S
Synonyms:	EDSPD2
Mammalian Cell Selection:	Neomycin
Vector:	pCMV6-AC-GFP (PS100010)
E. coli Selection:	Ampicillin (100 ug/mL)



[View online »](#)

ORF Nucleotide
Sequence:

>RG208948 representing NM_201442
Red=Cloning site Blue=ORF Green=Tags(s)

TTTTGTAATACGACTCACTATAGGGCGGCCGGAATTCGTCGACTGGATCCGGTACCGAGGAGATCTGCC
GCCCGCATCGCC

ATGTGGTGCATTGCTGTTTCTACTTTTGGCATGGGTTTATGCTGAGCCTACCATGTATGGGGAGATCC
TGCCCCTAACATCCTCAGGCATATCCAGTGAGGTAGAGAAATCTTGGGACATAGAAGTTCTGAAGG
GTATGGGATTCACCTCTACTTCACCCATCTGGACATTGAGCTGTCAGAGAACTGTGCGTATGACTCAGTG
CAGATAATCTCAGGAGACACTGAAGAAGGGAGGCTCTGTGGACAGAGGAGCAGTAACAATCCCCACTCTC
CAATTGTGAAGAGTTCCAAGTCCCATACAACAACTCCAGGTGATCTTTAAGTCAGACTTTTCCAATGA
AGAGCGTTTTACGGGTTTGTGCATACTATGTTGCCACAGACATAAATGAATGCACAGATTTTGTAGAT
GTCCTTGTAGCCACTTCTGCAACAATTCATTGGTGGTACTTCTGCTCCTGCCCGGGAATATTTCC
TCCATGATGACATGAAGAATTGCGGAGTTAATTGCAGTGGGATGTATTCAGTGCCTGATTGGGGAGAT
TGCAAGTCCCAATTATCCCAAACCATATCCAGAGAACTCAAGGTGTAATACCAGATCCGGTTGGAGAAA
GGTTCCAAGTGGTGGTACCTTGGGAGAGAAGATTTGATGTGAAGCAGCTGACTCAGCGGGAACCT
GCCTTGACAGTTTGTGTTTGTGCAGGAGATCGGCAATTTGGTCTTACTGTGGTCATGGATCCCTGG
GCCTCTAAATATTGAAACCAAGAGTAATGCTCTTGATATCATCTTCCAACTGATCTAACAGGGCAAAAA
AAGGGCTGAAACTTCGCTATCATGGAGATCCAATGCCCTGCCCTAAGGAAGACACTCCCAATTCGTGTT
GGGAGCCTGCGAAGGCAAAATATGTCTTTAGAGATGTGGTGCAGATAACCTGTCTGGATGGGTTGAAGT
TGTGGAGGACGTGTTGGTGAACATCTTTCTATTCGACTGTCAAAGCAATGAAAGTGGAGTAATTC
AACTGAAATGTCAACCTGTGGACTGTGGCATTCTGAATCCATTGAGAATGGTAAAGTTGAAGACCCAG
AGAGCACTTTGTTTGGTCTGTACCCGCTACACTTGTGAGGAGCCATATTACTACATGGAAAATGGAGG
AGGTGGGAGATCACTGTGCTGGTAACGGGAGCTGGGTGAATGAGGTGCTGGGCCCGGAGCTGCCGAAA
TGTGTTCCAGTCTGTGGAGTCCCAAGAGAACCTTTGAAGAAAAACAGAGGATAATTGGAGGATCCGATG
CAGATATTA AAAACTTCCCTGGCAAGTCTTCTTTGACAACCCATGGGCTGGTGGAGCGCTCATTAAATGA
GTACTGGGTGCTGACGGCTGCTCATGTTGTGGAGGAAACAGGGAGCCAACAATGTATGTTGGGTCCACC
TCAGTGCAGACCTCACGGCTGGCAAAATCCAAGATGCTCACTCCTGAGCATGTGTTTATTCATCCGGGAT
GGAAGCTGCTGGAAGTCCAGAAGGACGAACCAATTTTGATAATGACATTGCACTGGTGGGCTGAAAGA
CCCAGTAAAAATGGGACCCACCTCTCTCCATCTGCCTACCAGGCACCTCTCCGACTACAACCTCATG
GATGGGGACCTGGGACTGATCTCAGGCTGGGGCCGAACAGAGAAGAGAGATCGTGTGTTGCCTCAAGG
CGCAAGGTTACCTGTAGCTCCTTAAGAAAATGCAAAGAAGTAAAGTGGAGAAACCCACAGCAGATGC
AGAGGCCATGTTTTCACTCCTAACATGATCTGTGCTGGAGGAGAGAAGGCATGGATAGCTGTAAGGG
GACAGTGGTGGGGCCTTTGCTGTACAGGATCCCAATGACAAGACCAAAATCTACGCAGCTGGCCTGGTGT
CCTGGGGCCCCAGTGTGGGACCTATGGGCTCTACACACGGGTAAGAAGTATGTTGACTGGATAATGAA
GACTATGCAGGAAAAATAGCACCCCGTGAGGAC

ACGCGTACGCGGCCGCTCGAG - GFP Tag - GTTTAA

Protein Sequence: >RG208948 representing NM_201442
 Red=Cloning site Green=Tags(s)

MWCIVLFSLLAWVYAEPPTYGEILSPNYPQAYPSEVEKSWDIEVPEGYGIHLFYFTHLDIELSENCAYDSV
 QIISGDTTEEGRLCGQRSSNNPHSPIVEEFQVPYNKLQVIFKSDFSNEERFTGFAAYVATDINECTDFVD
 VPCSHFCNNFIGGYFCSCPPEYFLHDDMKNCGVNCSGDVFTALIGEIASPNYPKYPENSRCYQIRLEK
 GFQVVVTLRREDFDVEAADSAGNCLDSL V FVAGDRQFGPYCGHGFPGPLNIETKSNALDIIFQDTL TGQK
 KGWKLRYHGDPMPCPKEDTPNSVWEPAKAKYVFRDVVQITCLDGFVVEGRV GATSFYSTCQSN GKWSNS
 K LK C Q P V D C G I P E S I E N G K V E D P E S T L F G S V I R Y T C E E P Y Y M E N G G G G E Y H C A N G S W V N E V L G P E L P K
 C V P V C G V P R E P F E E K Q R I I G G S D A D I K N F P W Q V F F D N P W A G G A L I N E Y W V L T A A H V V E G N R E P T M Y V G S T
 S V Q T S R L A K S K M L T P E H V F I H P G W K L L E V P E G R T N F D N D I A L V R L K D P V K M G P T V S P I C L P G T S S D Y N L M
 D G D L G L I S G W R T E K R D R A V R L K A A R L P V A P L R K C K E V K V E K P T A D A E A Y V F T P N M I C A G G E K G M D S C K G
 D S G G A F A V Q D P N D K T K F Y A A G L V S W G P Q C G T Y G L Y T R V K N Y V D W I M K T M Q E N S T P R E D

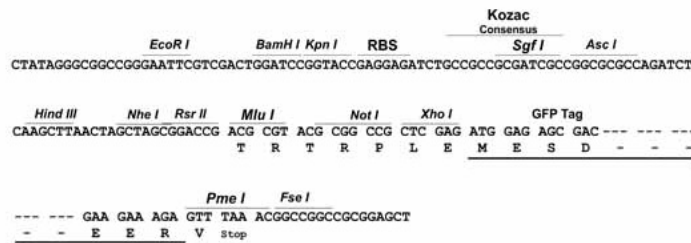
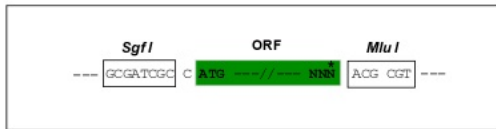
TRTRPLE - GFP Tag - V

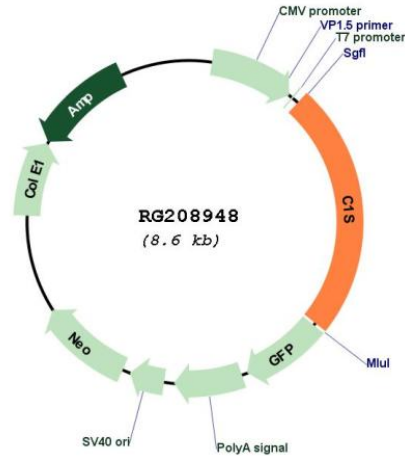
Restriction Sites:

Sgfl-MluI

Cloning Scheme:

Cloning sites used for ORF Shuttling:



Plasmid Map:


ACCN: NM_201442

ORF Size: 2064 bp

OTI Disclaimer: The molecular sequence of this clone aligns with the gene accession number as a point of reference only. However, individual transcript sequences of the same gene can differ through naturally occurring variations (e.g. polymorphisms), each with its own valid existence. This clone is substantially in agreement with the reference, but a complete review of all prevailing variants is recommended prior to use. [More info](#)

OTI Annotation: This clone was engineered to express the complete ORF with an expression tag. Expression varies depending on the nature of the gene.

Components: The ORF clone is ion-exchange column purified and shipped in a 2D barcoded Matrix tube containing 10ug of transfection-ready, dried plasmid DNA (reconstitute with 100 ul of water).

Reconstitution Method:

1. Centrifuge at 5,000xg for 5min.
2. Carefully open the tube and add 100ul of sterile water to dissolve the DNA.
3. Close the tube and incubate for 10 minutes at room temperature.
4. Briefly vortex the tube and then do a quick spin (less than 5000xg) to concentrate the liquid at the bottom.
5. Store the suspended plasmid at -20°C. The DNA is stable for at least one year from date of shipping when stored at -20°C.

RefSeq: [NM_201442.4](#)

RefSeq Size: 2813 bp

RefSeq ORF:	2067 bp
Locus ID:	716
UniProt ID:	P09871
Cytogenetics:	12p13.31
Protein Families:	Druggable Genome, Protease
Protein Pathways:	Complement and coagulation cascades, Systemic lupus erythematosus
Gene Summary:	This gene encodes a serine protease, which is a major constituent of the human complement subcomponent C1. C1s associates with two other complement components C1r and C1q in order to yield the first component of the serum complement system. Defects in this gene are the cause of selective C1s deficiency. [provided by RefSeq, Mar 2009]