

Product datasheet for **RG208939**

TP53BP2 (NM_005426) Human Tagged ORF Clone

Product data:

Product Type:	Expression Plasmids
Product Name:	TP53BP2 (NM_005426) Human Tagged ORF Clone
Tag:	TurboGFP
Symbol:	TP53BP2
Synonyms:	53BP2; ASPP2; BBP; P53BP2; PPP1R13A
Mammalian Cell Selection:	Neomycin
Vector:	pCMV6-AC-GFP (PS100010)
E. coli Selection:	Ampicillin (100 ug/mL)
ORF Nucleotide Sequence:	>RG208939 representing NM_005426 Red=Cloning site Blue=ORF Green=Tags(s)

TTTTGTAATACGACTCACTATAGGGCGGCCGGAATTCGTCGACTGGATCCGGTACCGAGGAGATCTGCC
GCC**CGATCGCC**

ATGCGGTTCCGGTCCAAGATGATGCCGATGTTTCTTACCGTGTATCTCAGTAACAATGAGCAGCACTTCA
CAGAAGTTCAGTTACTCCAGAAACAATATGCAGAGACGTGGTGGATCTGTGCAAAGAACCCGGCGAGAG
TGATTGCCATTTGGCTGAAGTGTGGTGTGGCTCTGAACGTCCAGTTGCGGATAATGAGCGAATGTTTGT
GTTCTTCAACGATTTGGAAGTCAGAGGAACGAAGTTCGCTTCTCCTTCGTCATGAACGCCCCCTGGCA
GGGACATTGTGAGTGGACCAAGATCTCAGGATCCAAGTTAAAAAGAAATGGTGTAAAAGTTCCTGGTGA
ATATCGAAGAAAGGAGAACGGTGTAAATAGTCCTAGGATGGATCTGACTCTTGCTGAACTTCAGGAAATG
GCATCTCGCCAGCAGCAACAGATTGAAGCCAGCAACAATTGCTGGCAACTAAGGAACAGCGCTTAAAGT
TTTTGAAACAACAAGATCAGCGACAACAGCAACAAGTTGCTGAGCAGGAGAACTTAAAAGGCTAAAAGA
AATAGCTGAGAATCAGGAAGCTAAGCTAAAAAAGTGAGAGCACTTAAAGGCCACGTGGAACAGAAGAGA
CTAAGCAATGGGAACTTGTGGAGGAAATTGAACAGATGAATAATTTGTTCCAGCAAAAACAGAGGGAGC
TCGTCTGGCTGTGTCAAAGTAGAAGAACTGACCAGGCAGCTAGAGATGCTCAAGAACGGCAGGATCGA
CAGCCACCATGACAATCAGTCTGCAGTGGCTGAGCTTGATCGCCTCTATAAGGAGCTGCAGCTAAGAAAC
AAATTGAATCAAGAGCAGAATGCCAAGCTACAACAACAGAGGGAGTGTGTTGAATAAGCCTAATTCAGAAG
TGGCAGTCATGGATAAGCGTGTTAATGAGCTGAGGGACCGCTGTGGAAGAAGAAGGCAGCTCTACAGCA
AAAAGAAAATCTACCAGTTTCATCTGATGGAAATCTTCCCAGCAAGCCCGCTCAGCCCCAAGCCGTGTG
GCTGCAGTAGGTCCTATATCCAGTCGTCTACTATGCCTCGGATGCCCTCAAGGCCTGAATTGCTGGTGA
AGCCAGCCCTGCCGATGGTTCCCTTGGTCATTCAGGCTTCAGAGGGGCCGATGAAAATACAGACTGCC
CAACATGAGATCTGGGGCTGCTTCAAACTAAAGGCTCTAAAATCCATCCAGTTGGCCCTGATTGGAGT
CCTTCAAATGCAGATCTTTCCCAAGCCAAGGCTCTGCTTCTGTACCTCAAAGCACTGGGAATGCTCTGG
ATCAAGTTGATGATGGAGAGTTCGGCTGAGGGAGAAAGAGAAGAAAGTGCCTCCGTTCTCAATGTTTGA
TGCAGTAGACCAGTCCAATGCCACCTTCTTTGGTACTCTGAGGAAGAACCAGAGCAGTGAAGATATC



TTGCGGGATGCTCAGGTTGCAAATAAAAAATGTGGCTAAAGTACCACCTCCTGTTCTACAAAACAAAAAC
 AGATTAATTTGCCTATTTTGGACAACTAATCAGCCACCTTCAGACATTAAGCCAGACGGAAAGTTCTCA
 GCAGTTGTCAACAGTTGTTCCGTCATGGGAACTAAACAAAACAGCAGGGCAGCAGCCGAGAGTGCTG
 CTATCTCCAGCATACCTTCGGTTGGCCAAAGACCAGACCTTTCTCCAGGTTCTAAGCAAGAAAGTCCAC
 CTGCTGCTGCCGTCCGGCCCTTTACTCCCAGCCTTCAAAGACACCTTACTTCCACCCTTCAGAAAACC
 CCAGACCGTGGCAGCAAGTTCAATATATCCATGTATACGCAACAGCAGGGCCAGGAAAAAACTCCAG
 CAGGCTGTGCAGAGCGCTTGACCAAGACTCATACCAGAGGGCCACACTTTTCAAGTGTATATGGTAAGC
 CTGTAATTGCTGCTGCCAGAATCAACAGCAGCACCCAGAGAACATTTATTCCAATAGCCAGGGCAAGCC
 TGGCAGTCCAGAACCTGAAACAGAGCCTGTTTCTTCAGTTCAGGAGAACCATGAAAAAGAAAGATTCTCT
 CGGCCACTCAGCCAACTAAATTAAGTGCCTTTCTATCTAATCCTTACCAGAAACAGAGTGATGCTGACC
 TAGAAGCCTTACGAAAGAACTGTCTAACGCACCAAGGCCTCTAAAGAAACGTAGTTCTATTACAGAGCC
 AGAGGGTCTAATGGCCAAATATTAGAAAGCTTTTATATCAGAGGACCACCATAGCGGCCATGGAGACC
 ATCTCTGTCCCATCATACCCATCAAGTCAGCTTCTGTGACTGCCAGCTCAGAAAGCCAGTAGAAATCC
 AGAATCCATATTTACATGTGGAGCCGAAAAGGAGGTGGTCTCTGGTTCCTGAATCATTGTCCCAGA
 GGATGTGGGGAATGCCAGTACAGAGAACAGTGACATGCCAGCTCCTTCTCCAGGCCTTGATTATGAGCCT
 GAGGGAGTCCCAGACAACAGCCAAATCTCCAGAATAACCCAGAAGAACCAATCCAGAGGCTCCACATG
 TGCTTGATGTGTACCTGGAGGAGTACCCTCCATACCCACCCACCACATACCCATCTGGGGAGCCTGAAGG
 GCCCGGAGAAGACTCGGTGAGCATGCGCCCGCCTGAAATCACCGGGCAGGTCTCTCTGCCTCCTGGTAAA
 AGGACAACTTGGTAAAAGTGGCTCAGAGCGTATCGCTCATGGAATGAGGGTGAATTAACCCCTTG
 CTTTACTGCTAGATTCGTCTTTGGAGGGAGAATTTGACCTTGTACAGAGAATTTTATGAGGTTGATGA
 CCCAAGCCTCCCAATGATGAAGGCATCAGGCCTTTCACAATGCTGTGTGTGCAGGCCACAGAAATC
 GTTAAGTTCCTGGTACAGTTTGGTGAATGTAATGCTGCTGATAGTGTGATGGATGGACTCCATTACATT
 GTGCTCCTCATGTAACAACGTCCAAGTGTGAAGTTTTGGTGGAGTCAGGAGCCGCTGTGTTGCCAT
 GACCTACAGTGACATGCAGACTGCTGCAGATAAGTGCGAGGAAATGGAGGAAGGCTACACTCAGTGCCTC
 CAATTTCTTTATGGAGTTCAGGAGAAGATGGGCATAATGAATAAAGGAGTCATTTATGCGCTTTGGGATT
 ATGAACCTCAGAAATGATGATGAGCTGCCATGAAAGAAGGAGACTGCATGACAATCATCCACAGGGAAGA
 CGAAGATGAAATCGAATGGTGGTGGCGCGCCTTAATGATAAAGGAGGGATATGTTCCACGTAACCTTGCTG
 GGACTGTACCAAGAATTAACCAAGACAAGGAGCTTGCC

ACGCGTACGCGGCCGCTCGAG – GFP Tag – GTTTAA

Protein Sequence:

>RG208939 representing NM_005426
 Red=Cloning site Green=Tags(s)

MRFGSKMMPMFLTVYLSNNEQHFTEVPVTPETICRDVVDLCKEPGESDCHLAEVWCGSERPVADNERMFD
 VLQRFQSRNEVRFLLRHERPPGRDIVSGPRSQDPSLKRNGVKVPGEYRRKENGVNSPRMDLTLAELQEM
 ASRQQQIEAQQLLATKEQRLKFLKQQDQRQQQVAEQEKLRKLEIAENQEAALKKVRALKGHVEQKR
 LSNGKLVEEIEQMNNLFQKQRELVLAVSKVEELTRQLEMLKNGRIDSHHDNQSVAELDRLYKELQLRN
 KLNQEQNAKLQQRECLNKRNSEVAVMDKRVNELRDRLWKKKAALQQKENLPVSSDGNLPQQAASAPSRV
 AAVGPYIQSSTMPRMPSPPELLVKPALPDGSLVIQASEGPMKIQTLPNMRSGAASQTKGSKIHPVGPDWS
 PSNADLFPSQGSASVPQSTGNALDQVDDGEVPLREKEKVRPFMFDAVDQSNAPPSFGLRKNQSSEDI
 LRDAQVANKNVAKVPPPVTKPKQINLPYFGQTNQPPSDIKPDGSSQQLSTVVPSMGTKPKPAGQQPRVL
 LSPSIPSVGQDQTLSPGSKQESPPAAAVRPFTPQPSKDTLLPPFRKPQTVAASSIYSMYTQQAPGKNFQ
 QAVQSALTKTHTRGPHFSSVYGKPVIAAQNQQQHPENIYSNSQKPGSPPEPETEPVSSVQENHENERIP
 RPLSPTKLLPFLSNPYRNQSDADLEALRKKLSNAPRPLKKRSSITEPEGPNGPNIQKLLYQRTTIAAMET
 ISVPSYPSKSASVTASSESPVEIQNPYLHVEPEKEVSLVPELSPEDVGNASTENSMPAPSPGLDYEP
 EGVDPNSPNLQNNPEEPNPEAPHVLDVYLEEYPPYPPYPSGPEPEGPGEDSVSMRPPEITGQVSLPPGK
 RTNLRKTGSERIAHGMRVKFNPLALLLDSLEGEFDLVQRIIYEVDDPSLPNDEGITALHNAVCAHTEI
 VKFLVQFQVNVNAADSDGWTPHCAASCNNVQVCKFLVESGAAVFAMTYSDMQTAADKCEEMEGYTQCS
 QFLYGVQEKMGIMNKGVIALWDYEPQNDDELPMKEGDCMTIIHREDEDEIEWWWARLNDKEGYVPRNLL
 GLYPRIKPRQSLA

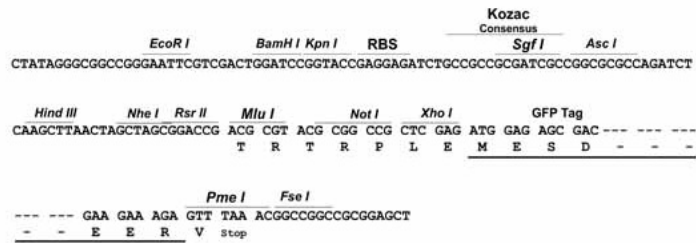
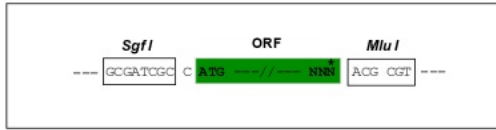
TRTRPLE – GFP Tag – V

Restriction Sites:

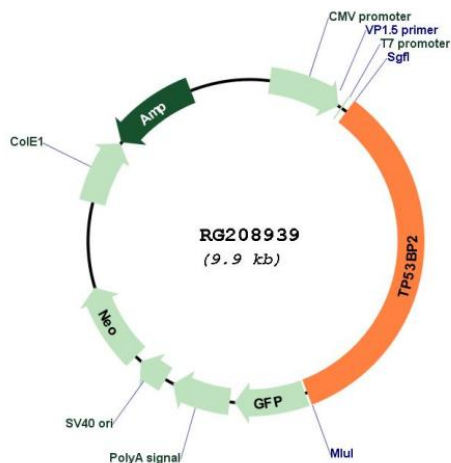
SgfI-MluI

Cloning Scheme:

Cloning sites used for ORF Shuttling:



Plasmid Map:



ACCN: NM_005426

ORF Size: 3405 bp

OTI Disclaimer: The molecular sequence of this clone aligns with the gene accession number as a point of reference only. However, individual transcript sequences of the same gene can differ through naturally occurring variations (e.g. polymorphisms), each with its own valid existence. This clone is substantially in agreement with the reference, but a complete review of all prevailing variants is recommended prior to use. [More info](#)

OTI Annotation: This clone was engineered to express the complete ORF with an expression tag. Expression varies depending on the nature of the gene.

Components: The ORF clone is ion-exchange column purified and shipped in a 2D barcoded Matrix tube containing 10ug of transfection-ready, dried plasmid DNA (reconstitute with 100 ul of water).

Reconstitution Method:

1. Centrifuge at 5,000xg for 5min.
2. Carefully open the tube and add 100ul of sterile water to dissolve the DNA.
3. Close the tube and incubate for 10 minutes at room temperature.
4. Briefly vortex the tube and then do a quick spin (less than 5000xg) to concentrate the liquid at the bottom.
5. Store the suspended plasmid at -20°C. The DNA is stable for at least one year from date of shipping when stored at -20°C.

RefSeq: [NM_005426.2](#), [NP_005417.1](#)

RefSeq Size: 4802 bp

RefSeq ORF: 3018 bp

Locus ID: 7159

UniProt ID: [Q13625](#)

Cytogenetics: 1q41

Domains: SH3, ANK

Protein Families: Druggable Genome

Gene Summary: This gene encodes a member of the ASPP (apoptosis-stimulating protein of p53) family of p53 interacting proteins. The protein contains four ankyrin repeats and an SH3 domain involved in protein-protein interactions. It is localized to the perinuclear region of the cytoplasm, and regulates apoptosis and cell growth through interactions with other regulatory molecules including members of the p53 family. Multiple transcript variants encoding different isoforms have been found for this gene. [provided by RefSeq, Jul 2008]