

Product datasheet for **RG208936**

WDHD1 (NM_001008396) Human Tagged ORF Clone

Product data:

Product Type:	Expression Plasmids
Product Name:	WDHD1 (NM_001008396) Human Tagged ORF Clone
Tag:	TurboGFP
Symbol:	WDHD1
Synonyms:	AND-1; AND1; CHTF4; CTF4
Mammalian Cell Selection:	Neomycin
Vector:	pCMV6-AC-GFP (PS100010)
E. coli Selection:	Ampicillin (100 ug/mL)
ORF Nucleotide Sequence:	>RG208936 representing NM_001008396 Red=Cloning site Blue=ORF Green=Tags(s)

TTTTGTAATACGACTCACTATAGGGCGGCCGGAATTCGTCGACTGGATCCGGTACCGAGGAGATCTGCC
GCC**CGATCGCC**

ATGCTGCCACACGGAAGCCAATGAGATATGGGCATACAGAGGGACACACGGAGGTCTGTTTTGATGATT
CTGGGAGTTTTATTGTGACTTGTGGAAGTGATGGTGATGTGAGGATTTGGGAAGACTTGGATGATGATGA
TCCTAAGTTCATTAATGTTGGAGAAAAGGCATATTCATGTGCTTTGAAGAGTGGAAAACCTGGTCACTGCA
GTTTCTAATAACTATTCAAGTCCACACATTTCTGAAGGAGTCCAGATGGTATATTGACTCGCTTCA
CTACAAATGCAAACCATGTGGTCTTTAATGGGGATGGTACTAAAATTGCTGCTGGATCTAGTGATTTTCT
AGTCAAAATTGTGGATGTGATGGATAGCAGCCAACAGAAAACATTTTCGAGGACATGATGCCCTGTTTTA
AGTCTTTCTTTGATCCTAAGGACATCTTTCTGGCATCAGCTAGTTGTGATGGATCTGTCAGAGTGTGGC
AAATTTGAGATCAGACATGTGCTATTAGTTGGCCACTGCTACAAAAATGCAACGATGTGATAAATGCAAA
ATCAATCTGCAGACTTGCTTGGCAGCAAAAAGTGGGAAGTTACTGGCAATTCCTGTGAAAAAATCTGTT
AAGCTATATAGAAGAGAATCTTGAGTCATCAATTTGATCTTTCAGATAATTTCACTCTCAGACCTCA
ATATAGTAACCTGGTCTCCCTGTGGCAATATTTAGCTGCAGGTAGTATTAATGGTCTAATCATAGTTTG
GAATGTGAAACCAAGACTGCATGAAAGGGTGAACATGAGAAAGGTTATGCAATTTGGTCTGGCA
TGGCATCTACTTGTGGTCAATATCGTATACTGATGCGGAAGGAAATCTAGGGCTCTAGAGAATGTT
GTGACCCAGTGGAAAGACATCAAGCAGTAAGGTATCTAGCAGAGTGGAAAAGGATTATAATGATCTTTT
TGATGGAGATGATATGAGTAATGCTGGTATTTCTAAATGACAATGCAGTTGAGATCCCTTCTTTTTCA
AAAGGGATTATAAATGATGATGAGGATGATGAAGACCTCATGATGGCTTCAGGTCGCTCAGACAGCGAA
GTCACATCCTAGAAGATGATGAAAACCTCAGTTGATATTTCAATGCTAAAAACTGGTTCTAGTCTTCTCAA
AGAGGAGGAGGAAGATGGTCAAGAAGGCAGCATTACAATCTACCACTTGAACATCCCAAAGGCCATTT
TATGATGGACCCATGCCAACTCCCGGCAAAAGCCATTTCAAGTCAAGTTTACACCGTTGCATCTCACTC
ACAGATTCATGGTGTGAACTCTATTGGAATTATTCGCTGCTATAATGATGAGCAAGACAATGCCATAGA
TGTGGAGTCCATGATACCTCCATACACCATGCAACACACTTATCAAACACTTTGAATTACAATAGCA



[View online >](#)

GATCTTTCCACGAAGCTATTTTGTGGCATGTGAAAGCACTGATGAACTAGCAAGCAAGCTTCACTGCC
 TGCACTTTAGTTCTTGGGATTCAAGCAAAGAGTGGATAATAGACTTGCCTCAGAATGAGGATATTGAAGC
 CATATGTCTCGGTCAAGGATGGGCTGCTGCCGCTACTAGTGCCCTGCTTCTTCGATTGTTTACTATTGGA
 GGGTTCAAAAAGAGGTATTCAGCCTTGTGGACCTGTGGTGTCAATGGCAGGACATGGAGAACAGCTTT
 TCATTGTTATCACAGAGGTACAGGATTGATGGGGATCAGTGCCTTGGAGTTCAACTGCTAGAGCTGGG
 GAAAAAGAAAAACAATTTTGCATGGTGACCTCTTCTCTTACAAGGAAATCTTACCTGTCATGGATT
 GGGTTTTAGCTGAAGGTACCCCTTGTACGTGGATTGAGAAGGAATTGTTCAAGTCTTAAACAGAGGAC
 TTGGTAATACGTGGACTCCTATATGTAATACAAGAGAGCACTGCAAAGGAAAAATCTGATCACTACTGGGT
 GTTGGTATCCATGAAAAATCCCCAGCAACTAAGGTGCATTCTTGTAAAGGTTCTCGGTTTCCCCAACCC
 CTTCCACGCCCTGCTGTTGCTATATTATCCTTTAAGCTTCTTACTGTCAGATTGCAACAGAGAAAAGGAC
 AAATGGAGGAGCAATTTTGGCGTTCAGTTATATTTACAACACCTTGAATATTTAGCTAAAAATGGTTA
 TGAATATGAAGAGAGCACTAAAAATCAAGCAACAAAAGAGCAACAGGAACTTTTAATGAAAAATGCTTGGC
 CTTTCTGTAAACTGGAGCGAGAATCCGTTGTGTGGAACCTGCTGATCTAATGACTCAAAATGCTGTGA
 ATTTAGCCATTAATATGCTTCTCGCTCTCGGAAATTAATACTGGCTCAAAAATAAGTGAAGTGGCTGT
 AGAGAAGCAGCCGAATTGACAGCAACCCAGGTGGAAGAGGAAGAAGAAGAAGATTTTCAGAAAAAG
 CTGAATGCTGGTTACAGCAATACTGCTACAGAGTGGAGCCAACCAAGGTTTCAGAAATCAAGTTGAAGAAG
 ATGCTGAGGACAGTGGAGAAGCTGATGATGAAGAAAAACAGAAATACATAAGCCTGGACAGAACTCGTT
 TTCCAAAAGTACAAATCCTCTGATGTTTTCAGTAAAGTCAAGTGCAGTTACCTTTAGCAGCCAAGGACGA
 GTAATCCCTTTAAGGTATCAGCCAGTTCCAAAGAACCAGCCATGTCATGAATTCAGCAGCTTCAACTA
 ATATTTTAGACAATATGGGCAATCATCCAAGAAATCCACTGCACTTAGTCGAATACAAATAATGAAAA
 GTCTCCCATTAATAAGCCTCTGATTCCAAAGCCGAAAGCCTAAGCAGGCATCTGCAGCATCTATTTCCAG
 AAAAGAAATCTCAAACATAAAAACCTGAGGAAGTGAAGAAGAAAAATCTTAAAAATGATTATCTGAAA
 CCCCAGCTATATGCTCCTCCTCAAACACTGAAAACCAAAGGCCAAAGACCGGTTCCAGATGTGGTTAGA
 AGAAAAATAGAAGTAATATTTTGTCTGACAACTCCTGACTTTTTCAGATGAAGCAGACATAATAAAGAAAGGA
 ATGATTCGATTTAGAGTATTGTCAACTGAAGAAAAGAAAGGTGTGGGCTAACAAAGCCAAAGGAGAAACGG
 CAAGTGAAGGAACTGAAGCAAAGAAGCGAAAACGTGTGGTTGATGAAAGTATGAAACAGAAAACAGGA
 AGAAAAAGCAAAGAGAACCTGAATTTGTCTAAAAAGCAGAAACCTTTAGATTTTCTACAAATCAGAAA
 CTATCAGCTTTTGCATTTAAGCAGGAG

ACGCGTACGCGGCCGCTCGAG - GFP Tag - GTTTAA

Protein Sequence:

>RG208936 representing NM_001008396
 Red=Cloning site Green=Tags(s)

MPATRKPMRYGHTTEGHTVEVCFDDSGSFIVTCGSDGDVRIWEDLDDDDPKFINVGEKAYSCALKSGKLVTA
 VSNNTIQVHTFPEGVPDILTRFTTNANHVVFNGDGTKIAAGSSDFLVKIVDVMSSQKTRFRGHDAPVL
 SLSFDPKDIFLASASCDGSVRVWQISDQTCASWPLLQKCNVDVINAKSICRLAWQPKSGKLLAIPVEKSV
 KLYRRESWSHQFDLSDNFISQTLNIVTWSPCGQYLAAGSINGLIIVWNVETKDCMERVKHEKGYAICGLA
 WHPTCGRISYTDAGNLGLENVCDPSGKTSSSKVSSRVEKDYNDLFDGDDMSNAGDFLNDNAVEIPSF
 KGIINDEDEDLMMASGRPRQRSHILEDDENSVDISMLKTGSLLKEEEEDGQEGSIHNLPLVTSQRP
 YDGPMPTRPQKPFQSGSTPLHLTHRFMVWNSIGIIRCYNDEQDNAIDVEFHDTSIHHATHLSNTLNITYIA
 DLSHEAILLACESTDELASKLHLCHFSSWDSKKEWIIDLPQNEDEIAICLGQGWAAAATSALLRLFTIG
 GVQKEVFLAGPVVSMAGHGEQLFIVYHRGTGFDGQCLGVQLLELGKKKQILHGDPLPLTRKSYLAWI
 GFSAEPTCYVDESEGIVRMLNRGLGNTWTPICNTRHCKGKSDHYWVVGIHNPPQLRCPCKGSRFPPT
 LPRPAVAILSFKLPYCQIATEKQMEEQFWRVSVIFHNHLDYLAKNGYEYEEESTKNQATKEQQELLMKMLA
 LSCKLEREFRCVELADLMTQNAVNLAIKYASRSRKLILAQKLELAVEKAAELTATQVEEEEEEDFRKK
 LNAGYSNTATEWSQPRFRNQVEEDAEDSAGEADDEEKPEIHKPGQNSFSKSTNSSDVSASGAVTFSSQGR
 VNPFKVSASSKEPAMSMNSARSTNILDNMGKSSKSTALSRTTNEKSP.IKPLIPKPKPKQASAAAYFQ
 KRNSQTNKTEEVKEENLKNVLETPAICPPQNTENQRPKTFQMWLEENRSNILSDNPDFSDEADIKEG
 MIRFRVLSTEERKVVWANKAKGETASEGTEAKKRKRVDDESDETENQEEKAKENLNLSSKQKPLDFSTNQ
 LSAFAFKQE

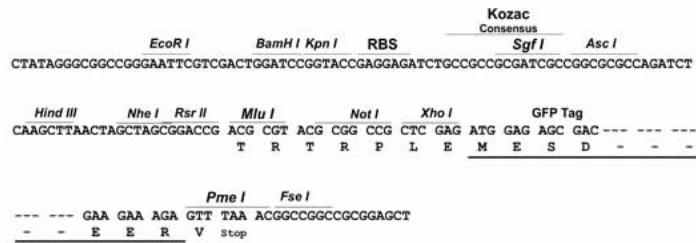
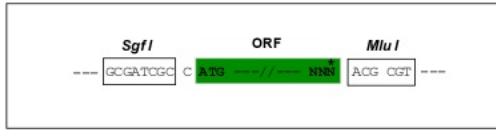
TRTRPLE - GFP Tag - V

Restriction Sites:

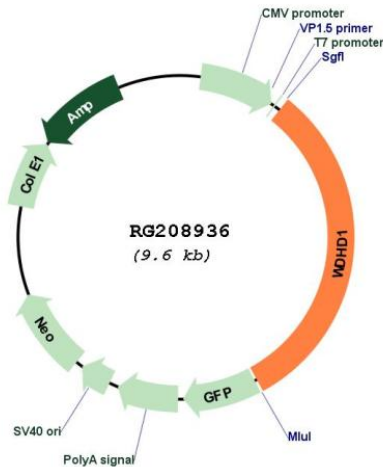
SgfI-MluI

Cloning Scheme:

Cloning sites used for ORF Shuttling:



Plasmid Map:



ACCN: NM_001008396

ORF Size: 3390 bp

OTI Disclaimer: The molecular sequence of this clone aligns with the gene accession number as a point of reference only. However, individual transcript sequences of the same gene can differ through naturally occurring variations (e.g. polymorphisms), each with its own valid existence. This clone is substantially in agreement with the reference, but a complete review of all prevailing variants is recommended prior to use. [More info](#)

OTI Annotation: This clone was engineered to express the complete ORF with an expression tag. Expression varies depending on the nature of the gene.

Components: The ORF clone is ion-exchange column purified and shipped in a 2D barcoded Matrix tube containing 10ug of transfection-ready, dried plasmid DNA (reconstitute with 100 ul of water).

Reconstitution Method:

1. Centrifuge at 5,000xg for 5min.
2. Carefully open the tube and add 100ul of sterile water to dissolve the DNA.
3. Close the tube and incubate for 10 minutes at room temperature.
4. Briefly vortex the tube and then do a quick spin (less than 5000xg) to concentrate the liquid at the bottom.
5. Store the suspended plasmid at -20°C. The DNA is stable for at least one year from date of shipping when stored at -20°C.

RefSeq: [NM_001008396.2](#), [NP_001008397.1](#)

RefSeq Size: 5961 bp

RefSeq ORF: 3021 bp

Locus ID: 11169

UniProt ID: [O75717](#)

Cytogenetics: 14q22.2-q22.3

Protein Families: Druggable Genome, Transcription Factors

Gene Summary: The protein encoded by this gene contains multiple N-terminal WD40 domains and a C-terminal high mobility group (HMG) box. WD40 domains are found in a variety of eukaryotic proteins and may function as adaptor/regulatory modules in signal transduction, pre-mRNA processing and cytoskeleton assembly. HMG boxes are found in many eukaryotic proteins involved in chromatin assembly, transcription and replication. Alternative splicing results in two transcript variants encoding different isoforms. [provided by RefSeq, Jul 2008]