

## Product datasheet for **RG208926**

### CUEDC1 (NM\_017949) Human Tagged ORF Clone

#### Product data:

**Product Type:** Expression Plasmids  
**Product Name:** CUEDC1 (NM\_017949) Human Tagged ORF Clone  
**Tag:** TurboGFP  
**Symbol:** CUEDC1  
**Synonyms:** DKFZp547L163; FLJ20739  
**Mammalian Cell Selection:** Neomycin  
**Vector:** pCMV6-AC-GFP (PS100010)  
**E. coli Selection:** Ampicillin (100 ug/mL)  
**ORF Nucleotide Sequence:** >RG208926 representing NM\_017949  
Red=Cloning site Blue=ORF Green=Tags(s)

TTTTGTAATACGACTCACTATAGGGCGGCCGGAATTCGTCGACTGGATCCGGTACCGAGGAGATCTGCC  
GCC**CGATCGCC**

ATGACCAGCCTGTTCCGCCGGAGCAGCAGCGGCAGCGCGGGGGTGGCACCGCCGGGCACGCGGGGGCG  
GGGGAGGCACGGCCGCCCCAGGAGCTCAACAACAGCCGGCCTGCCCGCCAGGTGCGCCGCTGGAGTT  
CAACCAGGCCATGGACGACTTCAAGACCATGTTCCCAACATGGATTACGACATCATCGAATGCGTGCTG  
CGCGCCAAACAGCGCGCTGTGGACGCCACCATCGACCAGCTGCTGCAGATGAACCTGGAGGGCGGTGGCA  
GCAGCGGGCGCTCTATGAGGACAGCTCCGACTCGGAGGACAGCATCCCCCGGAGATCTTGAAAGGAC  
TTTGGAACCTGATAGCTCGGATGAAGAGCCCCACCTGTGTACTCCCCGCCAGCCTACCACATGCACGTG  
TTCGACCGGCCCTACCCTCTGGCTCCCCGACTCCGCCTCCCCGTATCGACGCGCTGGGCTCTGGAGCCC  
CTACAAGCCAGAGACGCTATCGAACTGGAACCCACCACTGCTGGGCAACCTTCCGGATGACTTTCTCCG  
CATCTGCCCCAGCAGCTGGACAGCATAACAGGTAACGCTGGGGGCCCAAGCCTGGGAGTGGAGAGGGA  
TGTCCACCTGCCATGGCTGGGCCAGGGCCGGAGACCAGGAGAGCCGCTGGAAGCAGTACCTGGAGGACG  
AGAGGATCGCGCTTTTCTGCAGAACGAGGAGTTCATGAAGGAGCTGCAACGGAACCGGACTTCTCTCT  
CGCTCTGGAGAGAGATCGATTGAAATACGAATCCAGAAATCTAAATCCAGCAGCGTGGCTGTCGAAAC  
GACTTTGGCTTTTCTCTCTGTCCAGAACTGGCGACGCCAACCCGCTGTGTCTGAAGATGCCCTTAT  
TCAGGGACAAGCTGAAACACATGGGAAAGTCCACCCGGAGGAAACTGTTTGAACCTGCCCGAGCCTTCTC  
AGAGAAGACAAAATGAGGAAAGTCAAAGAGGAAACACTTGTGTAAGCATCAGTCGCTGGGGCTGCCGCG  
TCAACAGCCAACCTCCTGGATGATGTGGAGGGCCACGCGTGTGATGAAGACTTCCGGGCGAGGCGTCAGG  
AGGCACCAAGGTGGAGGAAGGCCTGCGAGAAGGACAG

AGCGGACCGACGCGTACGCGGCCGCTCGAG - GFP Tag - GTTTAA



[View online »](#)

**Protein Sequence:** >RG208926 representing NM\_017949  
 Red=Cloning site Green=Tags(s)

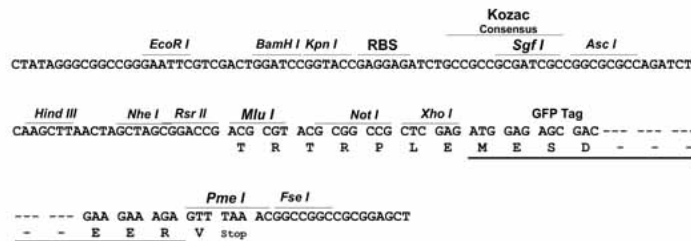
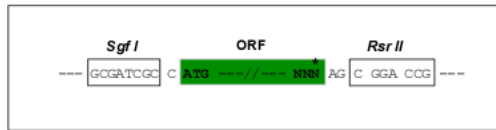
MTSLFRRSSSGSGGGGTAGARGGGGTAAPQELNNSRPARQVRRLEFNQAMDDFKTMFPNMDDYDIIIECVL  
 RANSGAVDATIDQLLQMNLEGGSSGGVYEDSSDSEDSIPPEILERTLEPDSSDEEPPPVYSPPAYHMHV  
 FDRPYPLAPPTPPRIDALGSGAPTSQRRYRNWNPPLLGNLPDDFLRILPQQLDISIQGNAGGPKPGSGEG  
 CPPAMAGPDPGQESRWKQYLEDERIALFLQNEEFMKELQRNRDFLLALERDRLKYESQKSKSSSVAVGN  
 DFGFSSPVPGTDANPAVSEDALFRDKLKHMGKSTRRKL FELARAFSEKTKMRKSKRKHLLKHQSLGAAA  
 STANLLDDVEGHACDEDFRGRRQEAPKVEEGLREGQ

SGPTRRRLE - GFP Tag - V

**Restriction Sites:** SgfI-RsrII

**Cloning Scheme:**

Cloning sites used for ORF Shuttling:



**ACCN:** NM\_017949

**ORF Size:** 1158 bp

**OTI Disclaimer:** The molecular sequence of this clone aligns with the gene accession number as a point of reference only. However, individual transcript sequences of the same gene can differ through naturally occurring variations (e.g. polymorphisms), each with its own valid existence. This clone is substantially in agreement with the reference, but a complete review of all prevailing variants is recommended prior to use. [More info](#)

**OTI Annotation:** This clone was engineered to express the complete ORF with an expression tag. Expression varies depending on the nature of the gene.

**Components:** The ORF clone is ion-exchange column purified and shipped in a 2D barcoded Matrix tube containing 10ug of transfection-ready, dried plasmid DNA (reconstitute with 100 ul of water).

**Reconstitution Method:**

1. Centrifuge at 5,000xg for 5min.
2. Carefully open the tube and add 100ul of sterile water to dissolve the DNA.
3. Close the tube and incubate for 10 minutes at room temperature.
4. Briefly vortex the tube and then do a quick spin (less than 5000xg) to concentrate the liquid at the bottom.
5. Store the suspended plasmid at -20°C. The DNA is stable for at least one year from date of shipping when stored at -20°C.

**Note:** Plasmids are not sterile. For experiments where strict sterility is required, filtration with 0.22um filter is required.

**RefSeq:** [NM\\_017949.1](#), [NP\\_060419.1](#)

**RefSeq Size:** 2193 bp

**RefSeq ORF:** 1160 bp

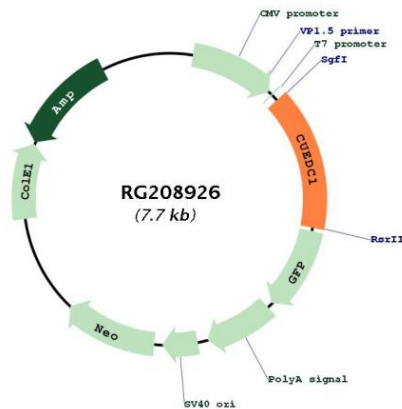
**Locus ID:** 404093

**Cytogenetics:** 17q22

**Domains:** CUE

**Protein Families:** Druggable Genome

**Product images:**



Circular map for RG208926