

Product datasheet for **RG208914**

PLVAP (NM_031310) Human Tagged ORF Clone

Product data:

Product Type: Expression Plasmids
Product Name: PLVAP (NM_031310) Human Tagged ORF Clone
Tag: TurboGFP
Symbol: PLVAP
Synonyms: DIAR10; FELS; gp68; PV-1; PV1
Mammalian Cell Selection: Neomycin
Vector: pCMV6-AC-GFP (PS100010)
E. coli Selection: Ampicillin (100 ug/mL)
ORF Nucleotide Sequence: >RG208914 representing NM_031310
 Red=Cloning site Blue=ORF Green=Tags(s)

TTTTGTAATACGACTCACTATAGGGCGGCCGGAATTCGTCGACTGGATCCGGTACCGAGGAGATCTGCC
 GCC**CGATCGCC**

ATGGGTCTGGCCATGGAGCACGGAGGGTCTACGCTCGGGCGGGGGCAGCTCTCGGGCTGCTGGTATT
 ACCTGCGCTACTTCTCCTCTTCGCTCCCTCATCCAATTCCTCATCATCTGGGGCTCGTGTCTTCAT
 GGTCTATGGCAACGTGCACGTGAGCACAGAGTCCAACCTGCAGGCCACCGAGCGCCGAGCCGAGGGCCTA
 TACAGTCAGCTCCTAGGGCTCACGGCTCCAGTCCAACCTTGACCAAGGAGCTCAACTTCACCACCCGCG
 CCAAGGATGCCATCATGCAGATGTGGTGAATGCTCGCCGCGACCTGGACCGCATCAATGCCAGCTCCG
 CCAGTGCCAGGGTGACCGGGTATCTACACGAACAATCAGAGGTACATGGCTGCCATCATCTTGAGTGAG
 AAGCAATGCAGAGATCAATTCAAGGACATGAACAAGAGCTGCGATGCCTTGCTCTTCATGCTGAATCAGA
 AGGTGAAGACGCTGGAGGTGGAGATAGCCAAGGAGAAGACCATTTGCACTAAGGATAAGGAAAGCGTGCT
 GCTGAACAAACCGTGGCGGAGGAACAGCTGGTTGAATGCGTGAAAACCCGGGAGCTGCAGCACCAAGAG
 CGCCAGCTGGCCAAGGAGCAACTGCAAAAGGTGCAAGCCCTCGCTGCCCTGGACAAGGACAAGTTTG
 AGATGGACCTTCGTAACCTGTGGAGGGACTCCATTATCCCACGACGCTGGACAACCTGGGTTACAACT
 CTACCATCCCCTGGGCTCGGAATTGGCTCCATCCGACAGGCTGCGACCATGCCAGCCTCATGAGC
 TCCAAGGTGGAGGAGCTGGCCCGGAGCCTCCGGCGGATATCGAACGCGTGCCCGCGAGAACTCAGACC
 TCCAACGCCAGAAGCTGGAAGCCAGCAGGGCCTGCGGGCCAGTCAGGAGGCGAAACAGAAAGGTGGAGAA
 GGAGGCTCAGGCCCGGGAGGCAAGCTCCAAGCTGAATGCTCCCGCAGACCCAGCTAGCGCTGGAGGAG
 AAGGCGGTGCTGCGGAAGGAACGAGACAACCTGGCCAAGGAGCTGGAAGAGAAGAAGAGGGAGGCGGAGC
 AGCTCAGGATGGAGCTGGCCATCAGAACTCAGCCCTGGACACCTGCATCAAGACCAAGTCGACCCGAT
 GATGCCAGTGTCAAGGCCATGGGCCCTGTCCCAACCCAGCCATCGACCCAGCTAGCCTGGAGGAG
 TTCAAGAGGAAGATCCTGGAGTCCAGAGGCCCTGCAGGCATCCCTGTAGCCCATCCAGTGCC

AGCGGACCGACGCTACGCGGCCGCTCGAG - GFP Tag - GTTTAA



[View online »](#)

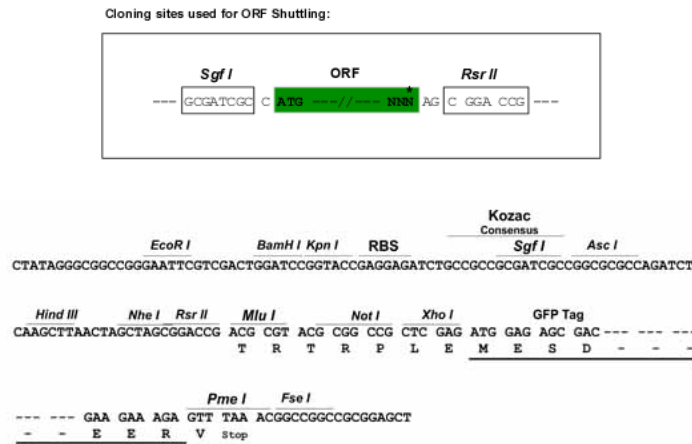
Protein Sequence: >RG208914 representing NM_031310
Red=Cloning site Green=Tags(s)

MGLAMEHGGSYARAGGSSRGCWYYLRYFFLFVSLIQFLIILGLVLFMVYGNVHVSTESNLQATERRAEGLYSLLGLTASQSNLTKELNFTTRAKDAIMQMWLNARRDLDRINASFRQCQGDRVIYTNNQRYMAAIIILSEKQCRDQFKDMNKSCDALLFMLNQKVKTLVEVIAKEKTICTKDKESVLLNKRVAEEQLVECCKTRELQHQERQLAKEQLQKVQALCLPLDKDKFEMDLRNLWRDSIIPRSLDNLGYNLYHPLGSELASIRRACDHMPSLMSKVEELARSLRADIERVARENSDLQRQKLEAQQGLRASQEAQKQVEKEAQAREAKLQAECRSRQTQLALEEKAVLRKERDNLAKELKREAEQLRMELAIRNSALDTCIKTKSQPMPVSRPMGVPVNPQPIDPASLEEFKRKILESQRPPAGIPVAPSSG

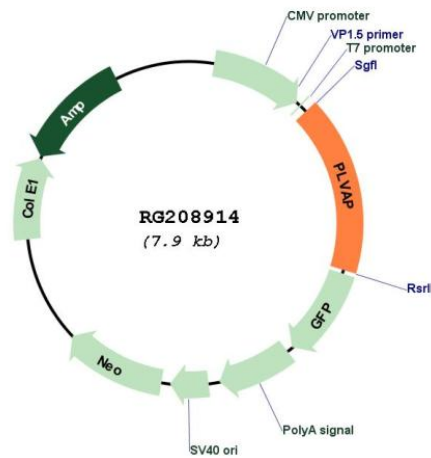
SGPTRRRLE - GFP Tag - V

Restriction Sites: SgfI-RsrII

Cloning Scheme:



Plasmid Map:



ACCN: NM_031310

ORF Size:	1326 bp
OTI Disclaimer:	<p>Due to the inherent nature of this plasmid, standard methods to replicate additional amounts of DNA in E. coli are highly likely to result in mutations and/or rearrangements. Therefore, OriGene does not guarantee the capability to replicate this plasmid DNA. Additional amounts of DNA can be purchased from OriGene with batch-specific, full-sequence verification at a reduced cost. Please contact our customer care team at custsupport@origene.com or by calling 301.340.3188 option 3 for pricing and delivery.</p> <p>The molecular sequence of this clone aligns with the gene accession number as a point of reference only. However, individual transcript sequences of the same gene can differ through naturally occurring variations (e.g. polymorphisms), each with its own valid existence. This clone is substantially in agreement with the reference, but a complete review of all prevailing variants is recommended prior to use. More info</p>
OTI Annotation:	This clone was engineered to express the complete ORF with an expression tag. Expression varies depending on the nature of the gene.
Components:	The ORF clone is ion-exchange column purified and shipped in a 2D barcoded Matrix tube containing 10ug of transfection-ready, dried plasmid DNA (reconstitute with 100 ul of water).
Reconstitution Method:	<ol style="list-style-type: none"> 1. Centrifuge at 5,000xg for 5min. 2. Carefully open the tube and add 100ul of sterile water to dissolve the DNA. 3. Close the tube and incubate for 10 minutes at room temperature. 4. Briefly vortex the tube and then do a quick spin (less than 5000xg) to concentrate the liquid at the bottom. 5. Store the suspended plasmid at -20°C. The DNA is stable for at least one year from date of shipping when stored at -20°C.
RefSeq:	NM_031310.3
RefSeq Size:	2317 bp
RefSeq ORF:	1329 bp
Locus ID:	83483
UniProt ID:	Q9BX97
Cytogenetics:	19p13.11
Protein Families:	Transmembrane
Gene Summary:	<p>Endothelial cell-specific membrane protein involved in the formation of the diaphragms that bridge endothelial fenestrae. It is also required for the formation of stomata of caveolae and transendothelial channels. Functions in microvascular permeability, endothelial fenestrae contributing to the passage of water and solutes and regulating transcellular versus paracellular flow in different organs. Plays a specific role in embryonic development. [UniProtKB/Swiss-Prot Function]</p>