

Product datasheet for **RG208867**

ANGPTL3 (NM_014495) Human Tagged ORF Clone

Product data:

Product Type:	Expression Plasmids
Product Name:	ANGPTL3 (NM_014495) Human Tagged ORF Clone
Tag:	TurboGFP
Symbol:	ANGPTL3
Synonyms:	ANG-5; ANGPT5; ANL3; FHBL2
Mammalian Cell Selection:	Neomycin
Vector:	pCMV6-AC-GFP (PS100010)
E. coli Selection:	Ampicillin (100 ug/mL)



[View online »](#)

ORF Nucleotide Sequence:

>RG208867 representing NM_014495
 Red=Cloning site Blue=ORF Green=Tags(s)

TTTTGTAATACGACTCACTATAGGGCGGCCGGAATTCGTCGACTGGATCCGGTACCGAGGAGATCTGCC
 GCC**CGGATCGCC**

ATGTTCACAATTAAGCTCCTTCTTTTTATTGTTCTCTAGTTATTTCTCCAGAATTGATCAAGACAATT
 CATCATTTGATTCTATCTCCAGAGCCAAAATCAAGATTTGCTATGTTAGACGATGTAATAATTTTAGC
 CAATGGCCTCCTTCAGTTGGGACATGGTCTTAAAGACTTTGTCCATAAGACGAAGGGCCAAATTAATGAC
 ATATTTCAAAAATCAACATATTTGATCAGTCTTTTTATGATCTATCGCTGCAAACCAAGTAAATCAAAG
 AAGAAGAAAAGAACTGAGAAGAACTACATATAAACTACAAGTCAAAAATGAAGAGGTAAAGAATATGTC
 ACTTGAACCACTCAAAAATTTGAAAGCCTCCTAGAAGAAAAATTTCTACTTCAACAAAAAGTAAATAT
 TTAGAAGGCACTAACTAACTAATTCAAATCAACCTGAAACTCCAGAACACCCAGAAGTAACTTCAC
 TTAATACTTTTGTAGAAAAACAAGATAATAGCATCAAAGACCTTCTCCAGACCGTGAAGACCAATATAA
 ACAATTAACCAACAGCATAGTCAAATAAAGAAATAGAAAATCAGCTCAGAAGGACTAGTATTCAGAA
 CCCACAGAAATTTCTCTATCTTCCAAGCCAAGAGCACCAAGAACTACTCCCTTTCTCAGTTGAATGAAA
 TAAGAAATGTAATAACATGATGGCATTCTGCTGAATGTACCACATTTATAACAGAGGTGAACATACAAG
 TGGCATGTATGCCATCAGACCCAGCAACTCTCAAGTTTTTTCATGTCTACTGTGATGTTATATCAGGTAGT
 CCATGGACATTAATCAACATCGAATAGATGGATCACAAAATTTCAATGAAACGTGGGAGAACTACAAT
 ATGTTTTGGGAGGCTTGATGGAGAATTTGGTTGGGCCCTAGAGAAGATATACTCCATAGTGAAGCAATC
 TAATATGTTTTACGAATTGAGTTGGAAGACTGGAAGACAACAAACATTATATTGAATATCTTTTTAC
 TTGGGAAATCACGAAACCAACTATACGCTACATCTAGTTGCGATTACTGGCAATGTCCCAATGCAATCC
 CGGAAAACAAGATTTGGTGTCTACTTTGGGATCACAAAGCAAAGGACACTTCAACTGTCCAGAGGG
 TTATTCAGGAGGCTGGTGGTGGCATGATGAGTGTGGAGAAAACAACCTAAATGGTAAATATAACAACCA
 AGAGCAAAATCTAAGCCAGAGAGAGAAGAGGATTATCTTGAAGTCTCAAAATGGAAGTTATACTCTA
 TAAATCAACAAAATGTTGATCCATCCAACAGATTCAGAAAGCTTTGAA

ACGCGTACGCGGCCGCTCGAG – GFP Tag – GTTTAA

Protein Sequence:

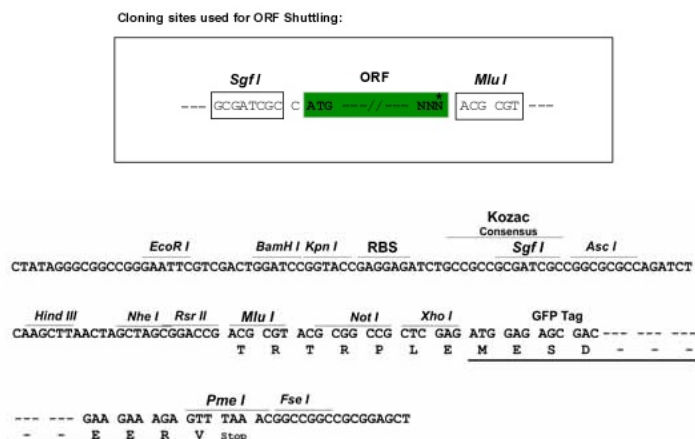
>RG208867 representing NM_014495
 Red=Cloning site Green=Tags(s)

MFTIKLLLFIVPLVISSRIDQDNSSFDLSPEPKSRFAMLDDVKILANGLLQLGHGLKDFVHKTKGQIND
 IFQKLNIFDQSFYDLSLQTSEIKEEKELRRTTYKLQVKNEEVKNMSLELNKLESLLEEKILLQKVKY
 LEEQLTNLIQNQPETPEHPEVTSKTFVEKQDNSIKDLLQTVEDQYKQLNQHSQIKEIENQLRRTSIQE
 PTEISLSSKPRAPRTTPFLQLNEIRNVKHDGIPAECTTIYNRGEHTSGMYAIRPSNSQVFHVYCDVISGS
 PWTLIQHRIDGSQNFNETWENYKYGFGRLDGEFVLGLEKIYSIVKQSNYVLRIELEDWKNKHIEYSFY
 LGNHETNYTLHLVAITGNVPNAIPENKDLVFTWDHKAKGHFNCPEGYSGGWWWHDECENNLNGKYNKP
 RAKSKPERRRGLSWKSQNGRLYSIKSTKMLIHPTDSESEF

TRTRPLE – GFP Tag – V

Restriction Sites:

SgfI-MluI

Cloning Scheme:


ACCN: NM_014495

ORF Size: 1380 bp

OTI Disclaimer: The molecular sequence of this clone aligns with the gene accession number as a point of reference only. However, individual transcript sequences of the same gene can differ through naturally occurring variations (e.g. polymorphisms), each with its own valid existence. This clone is substantially in agreement with the reference, but a complete review of all prevailing variants is recommended prior to use. [More info](#)

OTI Annotation: This clone was engineered to express the complete ORF with an expression tag. Expression varies depending on the nature of the gene.

Components: The ORF clone is ion-exchange column purified and shipped in a 2D barcoded Matrix tube containing 10ug of transfection-ready, dried plasmid DNA (reconstitute with 100 ul of water).

Reconstitution Method:

1. Centrifuge at 5,000xg for 5min.
2. Carefully open the tube and add 100ul of sterile water to dissolve the DNA.
3. Close the tube and incubate for 10 minutes at room temperature.
4. Briefly vortex the tube and then do a quick spin (less than 5000xg) to concentrate the liquid at the bottom.
5. Store the suspended plasmid at -20°C. The DNA is stable for at least one year from date of shipping when stored at -20°C.

RefSeq: [NM_014495.4](#)

RefSeq Size: 2126 bp

RefSeq ORF: 1383 bp

Locus ID: 27329

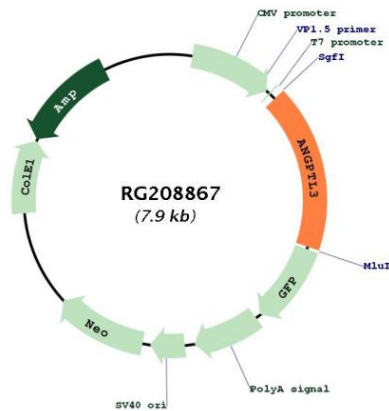
UniProt ID: [Q9Y5C1](#)

Cytogenetics: 1p31.3

Protein Families: Druggable Genome, Secreted Protein

Gene Summary: This gene encodes a member of a family of secreted proteins that function in angiogenesis. The encoded protein, which is expressed predominantly in the liver, is further processed into an N-terminal coiled-coil domain-containing chain and a C-terminal fibrinogen chain. The N-terminal chain is important for lipid metabolism, while the C-terminal chain may be involved in angiogenesis. Mutations in this gene cause familial hypobetalipoproteinemia type 2. [provided by RefSeq, Aug 2015]

Product images:



Circular map for RG208867