

Product datasheet for **RG208857**

HBQ1 (NM_005331) Human Tagged ORF Clone

Product data:

Product Type: Expression Plasmids
Product Name: HBQ1 (NM_005331) Human Tagged ORF Clone
Tag: TurboGFP
Symbol: HBQ1
Synonyms: HBQ
Mammalian Cell Selection: Neomycin
Vector: pCMV6-AC-GFP (PS100010)
E. coli Selection: Ampicillin (100 ug/mL)
ORF Nucleotide Sequence: >RG208857 representing NM_005331
Red=Cloning site Blue=ORF Green=Tags(s)

TTTTGTAATACGACTCACTATAGGGCGGCCGGAATTCGTCGACTGGATCCGGTACCGAGGAGATCTGCC
GCC**CGATCGCC**

ATGGCGCTGTCCGCGGAGGACCGGGCGCTGGTGC GCGCCCTGTGGAAGAAGCTGGGCAGCAACGTGGCG
TCTACACGACAGAGGCCCTGAAAGGACCTTCTGGCTTCCCGCCACGAAGACCTACTTCTCCACCT
GGACCTGAGCCCCGGCTCCTACAAGTCAGAGCCACGGCCAGAAGGTGGCGGACGCGTGAGCCTCGCC
GTGGAGCGCTGGACGACCTACCCACGCGCTGTCCGCGCTGAGCCACCTGCACGCGTGCCAGCTGCGAG
TGGACCCGGCCAGCTTCCAGCTCCTGGGCCACTGCCTGCTGGTAACCCTCGCCCGCACTACCCCGGAGA
CTTCAGCCCCGCGCTGCAGGCGTCGCTGGACAAGTTCTGAGCCACGTTATCTCGGCGCTGGTTTCCGAG
TACCGC

AC**CGGCCGCTCGAG** - GFP Tag - GTTTAA

Protein Sequence: >RG208857 representing NM_005331
Red=Cloning site Green=Tags(s)

MALSAEDRALVRLWKLGSNVGYTTEALERTFLAFPATKTYFSLDLSPGSSQVRAHGQKVADALSLA
VERLDDLPHALSALSHLHACQLRVDPASFQLLGHCLLVTLARHYPGDFSPALQASLDKFLSHVISALVSE
YR

TRPLE - GFP Tag - V

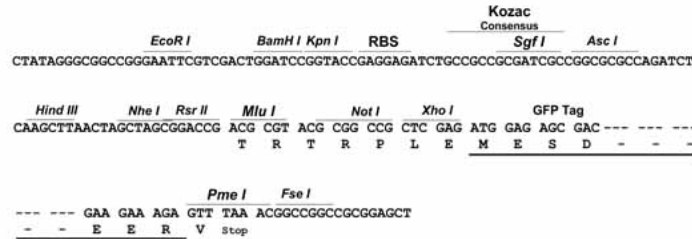
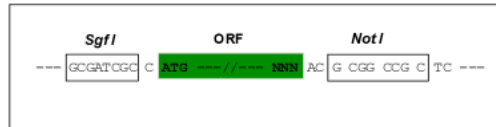
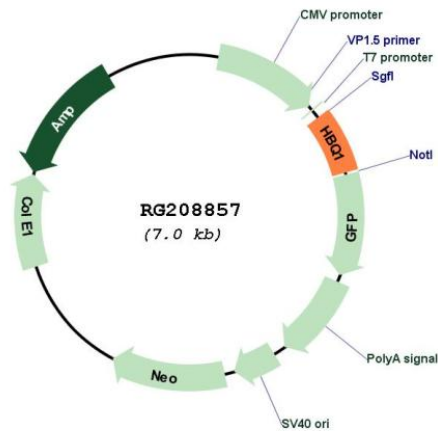
Restriction Sites: SgfI-NotI



[View online »](#)

Cloning Scheme:

Cloning sites used for ORF Shuttling:


Plasmid Map:

ACCN: NM_005331

ORF Size: 426 bp

OTI Disclaimer: The molecular sequence of this clone aligns with the gene accession number as a point of reference only. However, individual transcript sequences of the same gene can differ through naturally occurring variations (e.g. polymorphisms), each with its own valid existence. This clone is substantially in agreement with the reference, but a complete review of all prevailing variants is recommended prior to use. [More info](#)

OTI Annotation: This clone was engineered to express the complete ORF with an expression tag. Expression varies depending on the nature of the gene.

Components:	The ORF clone is ion-exchange column purified and shipped in a 2D barcoded Matrix tube containing 10ug of transfection-ready, dried plasmid DNA (reconstitute with 100 ul of water).
Reconstitution Method:	<ol style="list-style-type: none">1. Centrifuge at 5,000xg for 5min.2. Carefully open the tube and add 100ul of sterile water to dissolve the DNA.3. Close the tube and incubate for 10 minutes at room temperature.4. Briefly vortex the tube and then do a quick spin (less than 5000xg) to concentrate the liquid at the bottom.5. Store the suspended plasmid at -20°C. The DNA is stable for at least one year from date of shipping when stored at -20°C.
RefSeq:	NM_005331.5
RefSeq Size:	651 bp
RefSeq ORF:	429 bp
Locus ID:	3049
UniProt ID:	P09105
Cytogenetics:	16p13.3
Gene Summary:	Theta-globin mRNA is found in human fetal erythroid tissue but not in adult erythroid or other nonerythroid tissue. The theta-1 gene may be expressed very early in embryonic life, perhaps sometime before 5 weeks. Theta-1 is a member of the human alpha-globin gene cluster that involves five functional genes and two pseudogenes. The order of genes is: 5' - zeta - pseudozeta - mu - pseudoalpha-2 - pseudoalpha-1 - alpha-2 - alpha-1 - theta-1 - 3'. Research supports a transcriptionally active role for the gene and a functional role for the peptide in specific cells, possibly those of early erythroid tissue. [provided by RefSeq, Jul 2008]