

## Product datasheet for **RG208855**

### SPAG11B (NM\_016512) Human Tagged ORF Clone

#### Product data:

**Product Type:** Expression Plasmids  
**Product Name:** SPAG11B (NM\_016512) Human Tagged ORF Clone  
**Tag:** TurboGFP  
**Symbol:** SPAG11B  
**Synonyms:** EDDM2B; EP2; EP2C; EP2D; HE2; HE2C; SPAG11; SPAG11A  
**Mammalian Cell Selection:** Neomycin  
**Vector:** pCMV6-AC-GFP (PS100010)  
**E. coli Selection:** Ampicillin (100 ug/mL)  
**ORF Nucleotide Sequence:** >RG208855 representing NM\_016512  
 Red=Cloning site Blue=ORF Green=Tags(s)

TTTTGTAATACGACTCACTATAGGGCGCCGGGAATTCGTCGACTGGATCCGGTACCGAGGAGATCTGCC  
 GCC**CGATCGCC**

ATGAGGCAACGATTGCTCCCGTCCGTCACCAGCCTTCTCCTTGTGGCCCTGCTGTTCCAGGATCGTCTC  
 AAGCCAGACATGTGAACCACTCAGCCACTGAGGCTCTCGGAGAACTCAGGGAAAGAGCCCTGGGCAAGG  
 CACAAACGGGTTTCAGCTGCTACGCCACGCAGTAAATGGGACCTTTACCACCGCGCACCCACCTTAC  
 CAAGTGCACATCTCTACCAGGAGGCTCGAGGACCCTCATTTAAGATCTGCGTGGGCTTTTTAGGGCCTA  
 GATGGGCCAGGGATGTTCCACTGGGAATGAGAAATACCATCTGCCGTATGCAGCAAGGGATCTGCAGAC  
 TTTTTTCTGCCATTCTGG

**ACGCGT**ACGCGGCCGCTCGAG - GFP Tag - GTTTAA

**Protein Sequence:** >RG208855 representing NM\_016512  
 Red=Cloning site Green=Tags(s)  
 MRQRLLPSVTSLLLVALLLFPGSSQARHVNHSATEALGELRERAPQGQTNFQLLRHAVKWDLLPPRTPPY  
 QVHISHQEARGPSFKICVGLGPRWARGCSTGNEKYHLPYAARDLQTFLLPFW

**TRTRPLE** - GFP Tag - V

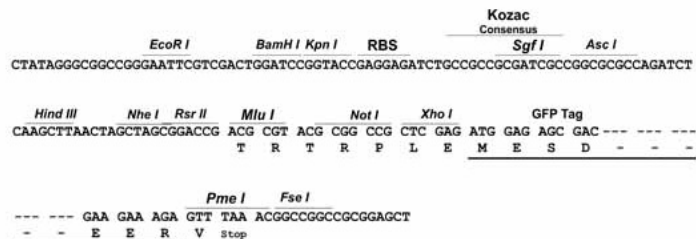
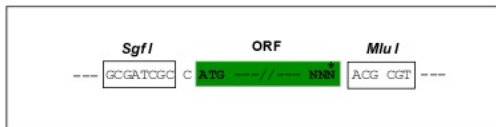
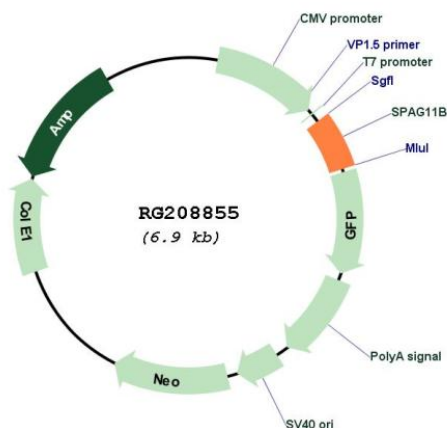
**Restriction Sites:** Sgfl-MluI



[View online »](#)

**Cloning Scheme:**

Cloning sites used for ORF Shutting:


**Plasmid Map:**

**ACCN:** NM\_016512

**ORF Size:** 309 bp

**OTI Disclaimer:** The molecular sequence of this clone aligns with the gene accession number as a point of reference only. However, individual transcript sequences of the same gene can differ through naturally occurring variations (e.g. polymorphisms), each with its own valid existence. This clone is substantially in agreement with the reference, but a complete review of all prevailing variants is recommended prior to use. [More info](#)

<b>OTI Annotation:</b>	This clone was engineered to express the complete ORF with an expression tag. Expression varies depending on the nature of the gene.
<b>Components:</b>	The ORF clone is ion-exchange column purified and shipped in a 2D barcoded Matrix tube containing 10ug of transfection-ready, dried plasmid DNA (reconstitute with 100 ul of water).
<b>Reconstitution Method:</b>	<ol style="list-style-type: none"><li>1. Centrifuge at 5,000xg for 5min.</li><li>2. Carefully open the tube and add 100ul of sterile water to dissolve the DNA.</li><li>3. Close the tube and incubate for 10 minutes at room temperature.</li><li>4. Briefly vortex the tube and then do a quick spin (less than 5000xg) to concentrate the liquid at the bottom.</li><li>5. Store the suspended plasmid at -20°C. The DNA is stable for at least one year from date of shipping when stored at -20°C.</li></ol>
<b>RefSeq:</b>	<u><a href="#">NM_016512.3</a></u> , <u><a href="#">NP_057596.1</a></u>
<b>RefSeq Size:</b>	794 bp
<b>RefSeq ORF:</b>	312 bp
<b>Locus ID:</b>	10407
<b>UniProt ID:</b>	<u><a href="#">Q08648</a></u>
<b>Cytogenetics:</b>	8p23.1
<b>Protein Families:</b>	Secreted Protein
<b>Gene Summary:</b>	This gene encodes several androgen-dependent, epididymis-specific secretory proteins. The specific functions of these proteins have not been determined, but they are thought to be involved in sperm maturation. Some of the isoforms contain regions of similarity to beta-defensins, a family of antimicrobial peptides. The gene is located on chromosome 8p23 near the defensin gene cluster. Alternative splicing of this gene results in seven transcript variants encoding different isoforms. Two different N-terminal and five different C-terminal protein sequences are encoded by the splice variants. Two additional variants have been described, but their full length sequences have not been determined. [provided by RefSeq, Jul 2008]