

Product datasheet for **RG208852**

Poly(A) RNA polymerase, mitochondrial (MTPAP) (NM_018109) Human Tagged ORF Clone

Product data:

Product Type:	Expression Plasmids
Product Name:	Poly(A) RNA polymerase, mitochondrial (MTPAP) (NM_018109) Human Tagged ORF Clone
Tag:	TurboGFP
Symbol:	Poly(A) RNA polymerase, mitochondrial
Synonyms:	PAPD1; SPAX4; TENT6
Mammalian Cell Selection:	Neomycin
Vector:	pCMV6-AC-GFP (PS100010)
E. coli Selection:	Ampicillin (100 ug/mL)



[View online »](#)

ORF Nucleotide Sequence:

>RG208852 representing NM_018109
 Red=Cloning site Blue=ORF Green=Tags(s)

TTTTGTAATACGACTCACTATAGGGCGGCCGGGAATTCGTCGACTGGATCCGGTACCGAGGAGATCTGCC
 GCC**CGGATCGCC**

ATGGCGGTTCCCGCGTGGGGCTTTGACCCGTTTGAACCTGTGTGCCCGGAGAAGAACTCGAGTCCAGC
 GGCTATCGTCAGGCTTTTGAAGTTGCCAGGAAGTGTGGCCAAAGACCTTAGGAGAGACGAGCAGCCTTC
 AGGGAGCGTGGAGACAGGCTTTGAAGACAAGATCCCAAAGGAGATTCTCTGAGATGCAAAATGAAAGA
 CGAAGACAGGCACAGCGGACTGTTTAAATACATTGCCAGAGAAAATCAGTGAACAAGTTTCTTAAAT
 ATTTATCCCAATTTGGACCTATTAATAATCATTCTTCTATGAAAGCTTTGGTCTCTATGCTGTCGTAGA
 ATTTTGCAAAAGGAAAGCATAGGTTCACTGCAGAATGGGACTCATACTCAAGCACGGCCATGGAGACT
 GCAATTCATTGAGTACGTTTCTCAATCTGAAGTTGAAAACAGACTTCTGAACGGTCACGCGTAC
 GGTCAAGTAATCAGTTGCCAGTCAAACAAGCAGCTTTTGAATTACTTTGTTATGCAGAAAGTATAGA
 CGATCAGTGAACACTCTTTGAAGGAGTCCAGCTAACAGAGGAGAACACTAAGCTCCGATATCTCACC
 TGTCTCTTATTGAAGACATGGCCGCGCGCATTTCCAGACTGCATAGTCAGACCTTTGGCTCCCTCAG
 TCAACTTTTTGGGAAGTTAGGATGTGATTTGGACATGTTTTGGATCTAGATGAAACCAGAAACCTCAG
 CGCTCACAAAGATCTCAGGAAATTTCTGATGGAATTTCAAGTGAATAATGTTCTTCAGAAAGAAATTGCA
 ACTCAGAAGATCTGTCTGTGTTAGGAGAGTGCCTTGACCACTTTGGCCCTGGCTGTGTGGGTGTGCAAA
 AAATATTAATGCCCCTGTCCGCTCGTGGGTTCTCACACCAGGCTCCGGATTCAGTGTGATTTGAC
 TACGAACAATAGGATTGCCTTGACAAGTCCGAAGTCTTTATATATGGTGCCTAGACTCAAGAGTG
 AGAGCCTTGGTGTTCAGTGTACGGTGTGGGCTCGAGCACATTCCTAACAAAGTAGTATCTCTGGTGCAT
 GGATTACAAATTTCTCCCTTACAATGATGGTCACTTTTTTTCTCCAGAGAAGATCACCCCTATTCTTCC
 AACACTAGATTCCCTTAAAAACCCTAGCAGATGCAGAAGATAAATGTGTAATAGAAGGCAACAACCGCACA
 TTTGTTCTGACTTGAGTAGAATTAACCTTACAGAACACAGAAACATTAGAATTACTACTGAAGGAAT
 TTTTTGAGTATTTGGCAATTTTCTTTGATAAAAAATTCATAAATATTCGACAGGGAAGGAGCAAAA
 CAAACCTGATTCTTCTCCCTGTACATTGAGAATCCATTTGAACTTCTCTCAACATAAGCAAAAATGTA
 AGTCAAAGCCAGCTGCAAAAATTTGATAGTTTGGCCGAGAAAGTGCCTGGATTTTACAACAGGAAGATA
 CAGATCGACCTTCCATATCAAGTAATCGGCCCTGGGGCTGGTATCCCTATTGCTACCATCTGCTCCAAA
 CAGAAAGTCTTTACCAAGAAGAAAAACAATAAGTTTGAATTGAAACAGTCAAGAACTTGTAGAATCT
 TTTAAAGTAACAGAACAGAAAATTTCAAAAAACAGTGGGAAGAGAACAATTAGTACTCAGACA

AG**CGGACCG**ACGCGTACGCGGCCGCTCGAG - GFP Tag - GTTTAA

Protein Sequence:

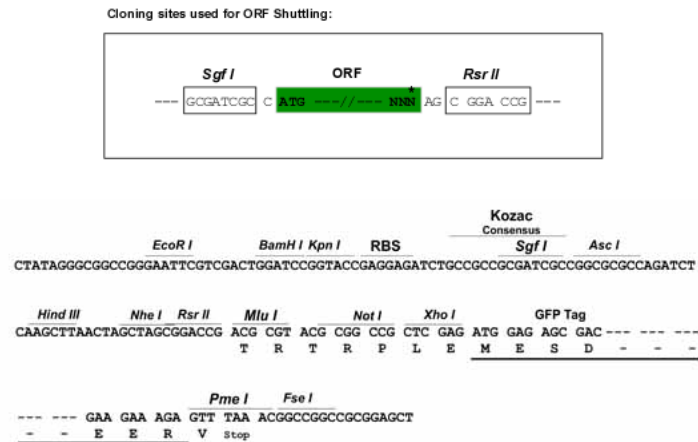
>RG208852 representing NM_018109
 Red=Cloning site Green=Tags(s)

MAVPGVGLLTRLNLCARRRTRVQRPIVRLLSCPGTVAKDLRDEQPSGSVETGFEDKIPKRRFSEMQRN
 REQAQRTVLIHCPEKISENKFLKYLSQLFGPINNHFFYESFGLYAVVEFCQKESIGSLQNGHTHPSTAMET
 AIPFRSRFFNLKLNQTSERSRVSSNQLPRSNKQLFELLCYAESIDDQLNLLKEFQLTEENTKLRYLT
 CSLIEDMAAAHFPDCIVRPFQSSVNTFGKLGCDLDMFLDLDETRNL SAHKISGNFLMEFQVKNVPSERIA
 TQKILSVLGECLDHFPGCGVGVQKILNARCPLVRFHQASGFQCDLTTNNRIALTSELLIYIGALDSRV
 RALVFSVRCWARAHSLSIPGAWITNFSLTMMVIFFLQRRSPPILPTLDSLKTLADAEDKCVIEGNRT
 FVRDL SRIKPSQNTETLELLLKEFFEYFGNFAFDKNSINIRQGREQNKPDSSPLYIQNPFETSLNISKNV
 SQSQLQKFVDLARESAWILQQEDTDRPSISSNRPWGLVSLLLPSAPNRKSFTHKKNNKFAIETVKNLLES
 LKGNRTENFTKTSKRTISTQT

SGP**TRRRLE** - GFP Tag - V

Restriction Sites:

SgfI-RsrII

Cloning Scheme:


ACCN: NM_018109

ORF Size: 1746 bp

OTI Disclaimer: The molecular sequence of this clone aligns with the gene accession number as a point of reference only. However, individual transcript sequences of the same gene can differ through naturally occurring variations (e.g. polymorphisms), each with its own valid existence. This clone is substantially in agreement with the reference, but a complete review of all prevailing variants is recommended prior to use. [More info](#)

OTI Annotation: This clone was engineered to express the complete ORF with an expression tag. Expression varies depending on the nature of the gene.

Components: The ORF clone is ion-exchange column purified and shipped in a 2D barcoded Matrix tube containing 10ug of transfection-ready, dried plasmid DNA (reconstitute with 100 ul of water).

Reconstitution Method:

1. Centrifuge at 5,000xg for 5min.
2. Carefully open the tube and add 100ul of sterile water to dissolve the DNA.
3. Close the tube and incubate for 10 minutes at room temperature.
4. Briefly vortex the tube and then do a quick spin (less than 5000xg) to concentrate the liquid at the bottom.
5. Store the suspended plasmid at -20°C. The DNA is stable for at least one year from date of shipping when stored at -20°C.

RefSeq: [NM_018109.2](#), [NP_060579.2](#)

RefSeq Size: 2571 bp

RefSeq ORF: 1749 bp

Locus ID: 55149

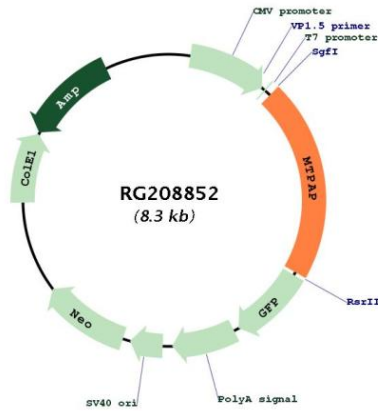
UniProt ID: [Q9NJV4](#)

Cytogenetics: 10p11.23

Domains: PAP_assoc

Gene Summary: The protein encoded by this gene is a member of the DNA polymerase type-B-like family. This enzyme synthesizes the 3' poly(A) tail of mitochondrial transcripts and plays a role in replication-dependent histone mRNA degradation.[provided by RefSeq, Jan 2011]

Product images:



Circular map for RG208852