

Product datasheet for **RG208850**

IGSF8 (NM_052868) Human Tagged ORF Clone

Product data:

Product Type:	Expression Plasmids
Product Name:	IGSF8 (NM_052868) Human Tagged ORF Clone
Tag:	TurboGFP
Symbol:	IGSF8
Synonyms:	CD81P3; CD316; EWI-2; EWI2; KCT-4; LIR-D1; PGRL
Mammalian Cell Selection:	Neomycin
Vector:	pCMV6-AC-GFP (PS100010)
E. coli Selection:	Ampicillin (100 ug/mL)



[View online »](#)

ORF Nucleotide Sequence:

>RG208850 representing NM_052868
 Red=Cloning site Blue=ORF Green=Tags(s)

TTTTGTAATACGACTCACTATAGGGCGGCCGGAATTCGTCGACTGGATCCGGTACCGAGGAGATCTGCC
 GCC**CGGATCGCC**

ATGGGCGCCCTCAGGCCACGCTGCTGCCGCCTTCGCTGCCGCTGCTGCTGCTAATGCTAGGAATGG
 GATGCTGGGCCCGGAGGTGCTGGTCCCGAGGGGCCCTTGTACCGCGTGGCTGGCACAGCTGTCTCCAT
 CTCTGCAATGTGACCGCTATGAGGGCCCTGCCAGCAGAACTTCGAGTGGTTCCTGTATAGGCCGAG
 GCCCAGATACTGCACTGGGCATTGTGAGTACCAAGGATACCCAGTTCCTATGCTGTCTTCAAGTCCC
 GAGTGGTGGCGGTGAGGTGCAGGTGCAGCGCCTACAAGGTGATGCCGTGGTGTCAAGATTGCCCGCT
 GCAGGCCCAGGATGCCGGCATTATGAGTGCCACACCCCTCCACTGATACCCGCTACCTGGGCAGTAC
 AGCGGCAAGGTGGAGCTGAGAGTCTTCCAGATGCTCCAGGTGTCTGCTGCCCCCAGGGCCCCGAG
 GCCGCCAGGCCCAACCTCACCCACGCATGACGGTGCATGAGGGCAGGAGCTGGCACTGGGCTGCCT
 GCGGAGGACAAGCACACAGAAGCACACACCTGGCAGTGTCTTTGGGCGATCTGTGCCGAGGACCA
 GTTGGGCGGTCAACTCTGCAAGGAAGTGGTGGGAATCCGGTCAGACTTGGCCGTGGAGGCTGGAGCTCCCT
 ATGCTGAGCGATTGGCTGCAGGGGAGCTTCGTCTGGGCAAGGAAGGGACCGATCCGTACCGCATGGTAGT
 AGGGGGTGGCCAGGCAGGGGACGCAGGCACCTACCACTGCACTGCCGCTGAGTGGATTAGGATCCCTGAT
 GGCAGCTGGGCCAGATTGCAGAGAAAAGGGCCGTCTGGCCACGTGGATGTGCAGACGCTGTCCAGCC
 AGCTGGCAGTGACAGTGGGGCCTGGTGAACGTCGGATCGGCCAGGGGAGCCCTTGGAACTGCTGTGCAA
 TGTGTGAGGGGCACTTCCCCAGCAGGCCGTATGCTGCATACTGTAGGTTGGGAGATGGCACCTGCG
 GGGCACCTGGGCCCGCCGCTGGTAGCCAGCTGGACACAGAGGTGTGGGCAGCTGGGCCCTGGCT
 ATGAGGGCCGACACATTGCCATGGAGAAGGTGGCATCCAGAACATACCGGCTACGGCTAGAGGCTGCCAG
 CCTGGTGTGATGCGGGCACCTACCGCTGCCTCGCCAAAGCCTATGTTTCGAGGGTCTGGGACCCGGCTTCGT
 GAAGCAGCCAGTCCCGTTCGCCGCTCTCCCTGTACATGTGCGGGAGGAAGGTGTGGTGTGGAGGCTG
 TGGCATGGCTAGCAGGAGGCACAGTGTACCGGGGAGACTGCCTCCCTGCTGTGCAACATCTCTGTGCG
 GGGTGGCCCCCAGGACTGCGGCTGGCCGCCAGCTGGTGGTGGAGCGACCAGAGGACGGAGAGCTCAGC
 TCTGTCCCTGCCAGCTGGTGGTGGCGTAGGCCAGGATGGTGTGGCAGAGCTGGGAGTCCGGCCTGGAG
 GAGGCCCTGTGAGCTGAGCTGGTGGGCCCCGAAGCCATCGGCTGAGACTACACAGCTGGGGCCCCGA
 GGATGAAGGCGTGTACCACTGTGCCCCAGCGCCTGGGTGCAGCATGCCACTACAGCTGGTACCAGGCG
 GGCAGTCCCCTCAGGGCCTGTACAGTCTACCCCTACATGCATGCCCTGGACACCCTATTTGTGCTC
 TGCTGGTGGGTACAGGGTGGCCCTAGTCACTGGTCCACTGTCTTGGTACCATCACTGCTGCTTCAT
 GAAGAGGCTTCGAAAACGG

AG**CGGACCG**ACGCGTACGCGGCCGCTCGAG - GFP Tag - GTTTAA

Protein Sequence:

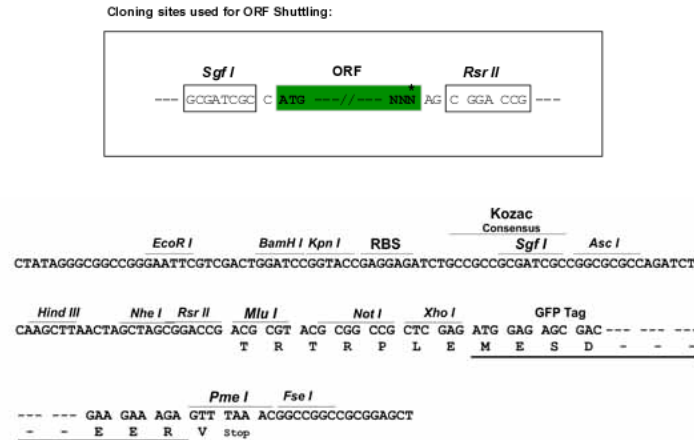
>RG208850 representing NM_052868
 Red=Cloning site Green=Tags(s)

MGALRPTLLPPSLPLLLLLMLGMGCWAREVLVPEGPLYRVAGTAVSISCNVTGYEGPAQQNFEWFLYRPE
 APD TALGIVSTKDTQFSYAVFKSRVVAGEVQVQRLQGDVAVLKIARLQAQDAGIYECHTPTDTRYLGSY
 SGKVELRVL PDVLQVSAAPPGRGRQAPTSPRMTVHEGQELALGCLARTSTQKHTHLAVSFGRSVPEAP
 VGRSTLQEVVGI RSDLA VEAGAPYAERLAAGELRLGKEGTD RYRMVVGGAQAGDAGTYHCTAAEWIQDPD
 GSWAQIAEKRAVLAHVDVQTLSSQLAVTVGPERRIGPGELELLCNVSGALPPAGRHAAYSVGWEMAPA
 GAPGPGRLVAQLDTEGVGSLGPGYEGRHIAMEKVASRTYRLREARPGDAGTYRCLAKAYVRGSGTRLR
 EAASARSRPLPVHVREEGV VLEAVAWLAGT VYRGETASLLCNISVRGGPPGLRLAASWVVERPEDGELS
 SVPAQLVGGVQDGV AELGVRPGGPPVSELVGP RSHRLRLHSLGPEDEGVYHCAPSAWVQHADYSWYQA
 GSARSGPVTVPYPMHALDTL FVPLLVTGVALVTGATVLG TITCCFMKRLRKR

SGP**TRRRLE** - GFP Tag - V

Restriction Sites:

Sgfl-RsrII

Cloning Scheme:


ACCN: NM_052868

ORF Size: 1839 bp

OTI Disclaimer: The molecular sequence of this clone aligns with the gene accession number as a point of reference only. However, individual transcript sequences of the same gene can differ through naturally occurring variations (e.g. polymorphisms), each with its own valid existence. This clone is substantially in agreement with the reference, but a complete review of all prevailing variants is recommended prior to use. [More info](#)

OTI Annotation: This clone was engineered to express the complete ORF with an expression tag. Expression varies depending on the nature of the gene.

Components: The ORF clone is ion-exchange column purified and shipped in a 2D barcoded Matrix tube containing 10ug of transfection-ready, dried plasmid DNA (reconstitute with 100 ul of water).

Reconstitution Method:

1. Centrifuge at 5,000xg for 5min.
2. Carefully open the tube and add 100ul of sterile water to dissolve the DNA.
3. Close the tube and incubate for 10 minutes at room temperature.
4. Briefly vortex the tube and then do a quick spin (less than 5000xg) to concentrate the liquid at the bottom.
5. Store the suspended plasmid at -20°C. The DNA is stable for at least one year from date of shipping when stored at -20°C.

RefSeq: [NM_052868.6](#)

RefSeq Size: 2320 bp

RefSeq ORF: 1842 bp

Locus ID: 93185

UniProt ID: [Q969P0](#)

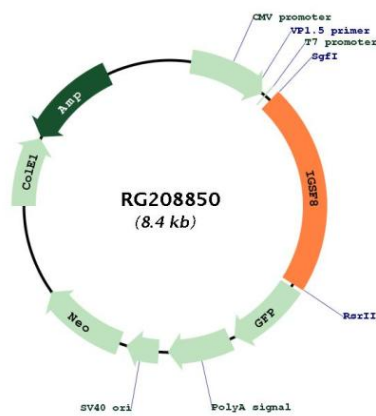
Cytogenetics: 1q23.2

Domains: ig, IG

Protein Families: Transmembrane

Gene Summary: This gene encodes a member the EWI subfamily of the immunoglobulin protein superfamily. Members of this family contain a single transmembrane domain, an EWI (Glu-Trp-Ile)-motif and a variable number of immunoglobulin domains. This protein interacts with the tetraspanins CD81 and CD9 and may regulate their role in certain cellular functions including cell migration and viral infection. The encoded protein may also function as a tumor suppressor by inhibiting the proliferation of certain cancers. Alternate splicing results in multiple transcript variants that encode the same protein. [provided by RefSeq, Sep 2011]

Product images:



Circular map for RG208850