

Product datasheet for **RG208849**

TMCO4 (NM_181719) Human Tagged ORF Clone

Product data:

Product Type:	Expression Plasmids
Product Name:	TMCO4 (NM_181719) Human Tagged ORF Clone
Tag:	TurboGFP
Symbol:	TMCO4
Mammalian Cell Selection:	Neomycin
Vector:	pCMV6-AC-GFP (PS100010)
E. coli Selection:	Ampicillin (100 ug/mL)



[View online »](#)

ORF Nucleotide Sequence:

>RG208849 representing NM_181719
 Red=Cloning site Blue=ORF Green=Tags(s)

TTTTGTAATACGACTCACTATAGGGCGGCCGGGAATTCGTCGACTGGATCCGGTACCGAGGAGATCTGCC
 GCC**GCGATCGCC**

ATGGCCATGTGGAACAGGCCATGCCAGAGGCTGCCTCAGCAGCCTCTGGTAGCTGAGCCACTGCAGAGG
 GGGAGCCACACCTGCCACGGGCCGGGAGCTGACTGAGGCCAACCGCTTCGCCTATGCTGCCTCTGTGG
 CATCTCCCTGTCCAGTTATTTCTGAACCCGAACACAGCTCCTTCTGCACAGAGTTCATGGCAGGCCTG
 GTGCAGTGGCTGGAGTTGTCTGAAGCTGTCTTGCACACCATGACTGCTTTTTCGAGCGGCCTGGGAGGTG
 AAGGAGCAGATGTGTTTGTCAAATTTACTGAAGGACCCCATCTTGAAGGACGACCCGACGGTGATCAC
 TCAGGACCTTCTGAGCTTCTCACTCAAGGATGGGCACTATGACGCCCGGGCCAGAGTCTCGTTTGCAC
 ATGACCTCCCTGCTCCAAGTGCCTTGGAGGAGCTGGATGTCCTTGAAGAGATGTTCTGGAGAGCCTGA
 AGGAAATCAAAGAAGAGGAATCTGAAATGGCCGAGGCATCCGAAAGAAGAAAACCGGAGGAAATG
 GAAGCGTTATCTCTGATAGGCCTGGCGACTGTCCGAGGCGGAACGGTGATCGGTGTGACTGGAGGTCTA
 GCTGCACCCCTTGTGGCGCTGGAGCAGCGACGATTATTGGCAGCGCCGGGGCAGCGGCTCTGGGCTCAG
 CAGCCGGCATAGCCATCATGACCTCGCTGTTTGGTGCAGCTGGAGCTGGCCTGACAGGATACAAGATGAA
 GAAGCGAGTGGGAGCCATTGAAGAGTTCACGTTTCTGCCTCTGACGGAGGGCAGGCAGCTGCACATCACC
 ATCGCCGTACGGGGTGGCTCGCTTCTGGCAAATACCGCACCTTCAGTGCCTTGGGCTGCCCTGGCCC
 ACAGCCGTGAGCAGTACTGCCTGGCCTGGGAAGCCAAGTACCTGATGGAGCTCGGCAATGCCCTGGAGAC
 CATCCTCAGTGGTCTCGCCAACATGGTGGCCAGGAGGCCCTAAAGTACACAGTGTGTCTGGCATTGTG
 GCTGCCCTGACCTGGCCAGCCTCACTCCTCAGTGTCCCAATGTCATCGACAACCCCTGGGGGTGTGTC
 TCCATCGATCAGCAGAGGTTGGCAAGCACTGGCCACATCCTGCTCTCCCGCAGCAGGGGCGACGACC
 TGTACCTTGATTGGCTTCAGCCTGGGAGCCAGAGTCATCTACTTCTGTCTGCAGGAGATGGCTCAAGAG
 AAAGATTGCCAAGGAATCATCGAGGACGTCATCCTGCTGGGTGCGCCTGTGGAGGAGAAGCCAAGCATT
 GGGAGCCTTTCGGGAAGGTGGTGTCCGGGAGGATCATCAACGGCTACTGCAGGGGAGACTGGCTGTGAG
 TTTCTGTACCGCACATCCTCGGTGCAGCTCCGTGTCCCGCCCTACAGCCCGTGTCTGCAGGACAGG
 AGGGTGGAGAACGTGGACCTGACCTCTGTGGTCAAGCGCCACCTGGACTATGCCAAGCAGATGGATGCCA
 TCCTGAAGGCCGTGGGCATCCGCACCAAGCCAGGCTGGGACGAGAAGGGGCTCTTGTGGCCCCAGGCTG
 CCTGCCCTCCGAGGAGCCTCGCCAGGCAGCAGCTGCCGCTCATCAGGCGAGACCCCCACCAGTTGGG
 CAAACCCAGGGTCCCATATCCGGAGACACTCCAAATTGGCCATGTCCACAGACCCAGCCAAGCCAGG
 TGCCAGTAGGGCTGGACCAGTCTGAAGGGGCTCCCTTCTGCTGCTGCCAGCCCTGAAAGGCCCCCAT
 CTGCAGCCATGGCATGGACCCCAACCCACTGGGCTGCCCCGATTGTGCCTGCAAGACCCAGGGCCCCAGC
 ACGGGGCTGGAC

ACGCGTACGCGGCCGCTCGAG – GFP Tag – GTTTAA

Protein Sequence:

>RG208849 representing NM_181719
 Red=Cloning site Green=Tags(s)

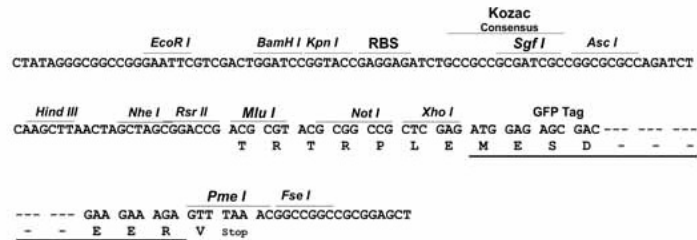
MAMWNRPCQRLPQQPLVAEPTAEGEPHLPTGRELTEANRFAYAALCGISLSQLFPEPEHSSFCTEFMAGL
 VQWLELSEAVLPTMTAFASGLGGEGADVQVQILLKDPILKDDPTVITQDLLSFLKDGHYDARARVLVCH
 MTSLLQVPLEELDVLLEMFLESLKEIKEESEMAEASRKKKENRRKWKRYLLIGLATVGGGTIVIGVTGGL
 AAPLVAAGAATIIGSAGAAALGSAAGIAIMTSLFGAAGAGLTGYKMKRVGAIEEFTFLPLTEGRQLHIT
 IAVTGWLASGKYRTFSAPWAALHSREQYCLAWAKYLMELGNALETILSGLANMVAQEALKYTVLSGIV
 AALTWPASLLSVANVIDNPWGVCLHRSAEVGHKLAHILLSRQQRRPVTLIGFSLGARVIYFCLQEMAQE
 KDCQGIIEDVILLGAPVEGEAKHWEPFRKVVSGRIINGYCRGDWLLSFVYRTSSVQLRVAGLQPVLLQDR
 RVENVDLTSVVSGLDYAKQMDAILKAVGIRTKPGWDEKLLAPGCLPSEEPQAAAAAASSGETPHQVG
 QTQGPISGDTSKLAMSTDPQAQVPVGLDQSEGLPAAASPERPPICSHGMDPNPLGCPDCACTQGPS
 TGLD

TRTRPLE – GFP Tag – V

Restriction Sites: Sgfl-MluI

Cloning Scheme:

Cloning sites used for ORF Shutting:



ACCN: NM_181719

ORF Size: 1902 bp

OTI Disclaimer: The molecular sequence of this clone aligns with the gene accession number as a point of reference only. However, individual transcript sequences of the same gene can differ through naturally occurring variations (e.g. polymorphisms), each with its own valid existence. This clone is substantially in agreement with the reference, but a complete review of all prevailing variants is recommended prior to use. [More info](#)

OTI Annotation: This clone was engineered to express the complete ORF with an expression tag. Expression varies depending on the nature of the gene.

Components: The ORF clone is ion-exchange column purified and shipped in a 2D barcoded Matrix tube containing 10ug of transfection-ready, dried plasmid DNA (reconstitute with 100 ul of water).

Reconstitution Method:

1. Centrifuge at 5,000xg for 5min.
2. Carefully open the tube and add 100ul of sterile water to dissolve the DNA.
3. Close the tube and incubate for 10 minutes at room temperature.
4. Briefly vortex the tube and then do a quick spin (less than 5000xg) to concentrate the liquid at the bottom.
5. Store the suspended plasmid at -20°C. The DNA is stable for at least one year from date of shipping when stored at -20°C.

RefSeq: [NM_181719.6](#)

RefSeq Size: 2989 bp

RefSeq ORF: 1905 bp

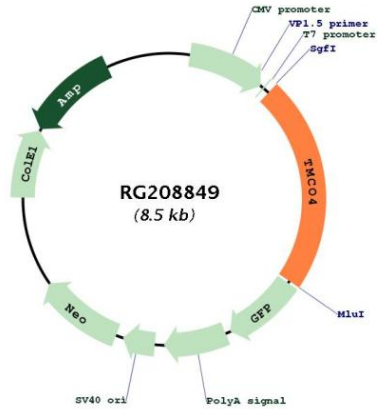
Locus ID: 255104

UniProt ID: [Q5TG1](#)

Cytogenetics: 1p36.13

Protein Families: Transmembrane

Product images:



Circular map for RG208849