

## Product datasheet for **RG208839**

### SLC44A3 (NM\_152369) Human Tagged ORF Clone

#### Product data:

Product Type:	Expression Plasmids
Product Name:	SLC44A3 (NM_152369) Human Tagged ORF Clone
Tag:	TurboGFP
Symbol:	SLC44A3
Synonyms:	CTL3
Mammalian Cell Selection:	Neomycin
Vector:	pCMV6-AC-GFP (PS100010)
E. coli Selection:	Ampicillin (100 ug/mL)



[View online »](#)

**ORF Nucleotide Sequence:**

>RG208839 representing NM\_152369  
 Red=Cloning site Blue=ORF Green=Tags(s)

TTTTGTAATACGACTCACTATAGGGCGGCCGGAATTCGTCGACTGGATCCGGTACCGAGGAGATCTGCC  
 GCC**CGGATCGCC**

ATGGGCTACTCGTGGTGGCTGGAGCCGCGGGAAGACTCCTCTTTGGCTATGACAGCTTTGGCAACATGT  
 GTGGCAAGAAGAACTCCCCGTGGAAGGGGCCCTCTTTTCAGGGCAGGACATGACCCTAAAAAACACGT  
 GTTCTTTATGAATTCCTGCAACCTGGAAGTCAAAGGTACGCAGCTCAACCGCATGGCCCTCTGTGTATCC  
 AACTGCCCTGAAGAGCAGCTTGACTCCCTGGAAGAGGTCCAGTCTTTGCAAACACCAGTGGGCTCTTCC  
 TGTGTGTTATAGTTTGAATTCCTCAACTATACCACAGTCCAAAAGCAGACTCACTGTGTCCCAGGCT  
 ACCAGTTCCTCAAGCAAGTCATTTCCCTATTTAACCGATGTGTCCCTCAAACACCTGAGTGCTACTCC  
 CTATTTGCATCTGTTTGGATAAATGATGTTGACACCTCCACCGAATTCTAAGTGAATCATGTCGGGAA  
 GAGATACAATCCTTGGCCTGTGTATCCTCGCATTAGCCTTGCTTTGGCCATGATGTTTACCTTCAGATT  
 CATCACACCCTTCTGGTTCACATTTTCATTTTCATTTGTTATTTTGGGATTGTTGTTTGTCTGCGGTGTT  
 TTATGGTGGCTGTATTATGACTATACCAACGACCTCAGCATAGAATTGGACACAGAAAGGGAAAAATATGA  
 AGTGCGTGTGGGTTTGTATCGTATCCACAGGCATCACGGCAGTGTCTGCTCGTCTTGATTTTTGTCT  
 CAGAAAGAGAATAAAATTGACAGTTGAGCTTTCCAAATCACAAATAAAGCCATCAGCAGTGCTCCCTTC  
 CTGCTGTTCCAGCCACTGTGGACATTTGCCATCCTCATTTTCTTCTGGTCCCTCTGGGTGGCTGTGCTGC  
 TGAGCCTGGGAAGTGCAGGAGCTGCCAGGTTATGGAAGCGGCCAAGTGAATATAAGCCCTTTCCGGG  
 CATTGGTACATGTGGTTCGACATTTAATTGGCTCATCTGGACTAGTGAATTCATCCTTGCCTGCCAG  
 CAAATGACTATAGCTGGGCAGTGGTACTTGTATTTCAACAGAAGTAAAAATGATCCTCTGATCATC  
 CCATCCTTTCTGCTCTCCATTCTCTTCTTCTACCATCAAGGAACCGTGTGAAAGAACAGCAGCATGGT  
 CTCTGTGGTGGATTCCGAGAATCATTGTCATGTACATGCAAAAACGCACTGAAAGAACAGCAGCATGGT  
 GCATTGTCAGGTACCTGTTCCGATGCTGCTACTGCTGTTTCTGGTGTCTTGACAAATACCTGCTCCATC  
 TCAACCAGAATGCATATACTACAAGTCTATTAATGGGACAGATTTCTGTACATCAGCAAAAGATGCATT  
 CAAAATCTGTCCAAGAAGTCAAGTCACTTTACATCTATTAAGTCTTTGGAGACTTCATAATTTTTCTA  
 GGAAAGGTGTTAGTGGTGTGTTTCACTGTTTTTGGAGACTCATGGCTTTTAACTACAATCGGCATTCC  
 AGGTGTGGCAGTCCCTCTGTTATTGGTAGCTTTTTTGCCTACTTAGTAGCCCATAGTTTTTTATCTGT  
 GTTTGAAACTGTGCTGGATGCATTTTCTGTGTTTTGCTGTTGATCTGGAACAATGATGGATCGTCA  
 GAAAGCCCTACTTTATGGATCAAGAATTTCTGAGTTTCTGTAAGGAGCAACAATTAACAATGCAA  
 GGGCACAGCAGGACAAGCACTCATTAAAGGAATGAGGAGGAACAGAAGTCCAGGCCATTGTGAGA

**ACGCGTACGCGGCCGCTCGAG** – GFP Tag – GTTTAA

**Protein Sequence:**

>RG208839 representing NM\_152369  
 Red=Cloning site Green=Tags(s)

MGYSVVAGAAGRLLFGYDSFGNMCCKNSPVEGAPLSGQDMLKKHVFFMNSCNLEVKGTQLNRMALCVS  
 NCPEEQLDLSEEVQFFANTSGSFLCVYSLNSFNTHSPKADSLCPRLPVPPSKSFPLFNRCVQPTECY  
 LFASVLIINDVDTLHRILSGIMSGRDTILGLCILALALSLAMFTFRFITLLVHIFISLVILGLLFCVGV  
 LWWLYDYTNDLSIELDTERENMKCVLGFIVSTGITAVLLVLFVLRKRIKLTVELFQITNKAISSAPF  
 LLFQPLWTFAILIFFWLVWAVLLSLGTAGAAQVMEGGQVEYKPLSGIRYMWSYHLIGLIWTSEFILACQ  
 QMTIAGAVVTCYFNRSKNDPPDHPILSSLSILFFYHQGTVVKGSFLISVVRIPRIIVMYMQNALKEQOHG  
 ALSRYLFRCCYCCFWCLDKYLLHLNQNAYTTTAINGTDFCTSAKDAFKILSKNSSHFTSINCFGDFIIFL  
 GKVLVVCFTVFGGLMAFNYNRAFQWAVPLLLVAFAYLVAHSFLSVFETVLDALFLCFVLDLETNDGSS  
 EKPYPMDQEFLSFVKRSNKLNNARAQQDKHSLRNEEGTELQAIVR

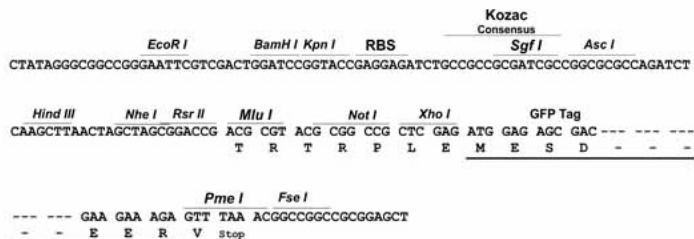
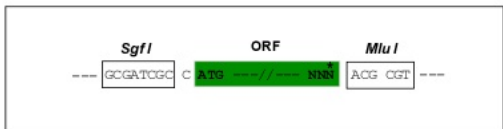
**TRTRPLE** – GFP Tag – V

**Restriction Sites:**

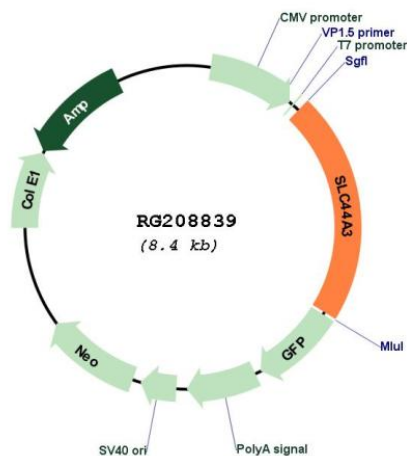
Sgfl-MluI

**Cloning Scheme:**

Cloning sites used for ORF Shutting:



**Plasmid Map:**



ACCN:                NM\_152369  
 ORF Size:          1815 bp

<b>OTI Disclaimer:</b>	The molecular sequence of this clone aligns with the gene accession number as a point of reference only. However, individual transcript sequences of the same gene can differ through naturally occurring variations (e.g. polymorphisms), each with its own valid existence. This clone is substantially in agreement with the reference, but a complete review of all prevailing variants is recommended prior to use. <a href="#">More info</a>
<b>OTI Annotation:</b>	This clone was engineered to express the complete ORF with an expression tag. Expression varies depending on the nature of the gene.
<b>Components:</b>	The ORF clone is ion-exchange column purified and shipped in a 2D barcoded Matrix tube containing 10ug of transfection-ready, dried plasmid DNA (reconstitute with 100 ul of water).
<b>Reconstitution Method:</b>	<ol style="list-style-type: none"><li>1. Centrifuge at 5,000xg for 5min.</li><li>2. Carefully open the tube and add 100ul of sterile water to dissolve the DNA.</li><li>3. Close the tube and incubate for 10 minutes at room temperature.</li><li>4. Briefly vortex the tube and then do a quick spin (less than 5000xg) to concentrate the liquid at the bottom.</li><li>5. Store the suspended plasmid at -20°C. The DNA is stable for at least one year from date of shipping when stored at -20°C.</li></ol>
<b>RefSeq:</b>	<a href="#">NM_152369.5</a>
<b>RefSeq Size:</b>	2332 bp
<b>RefSeq ORF:</b>	1818 bp
<b>Locus ID:</b>	126969
<b>UniProt ID:</b>	<a href="#">Q8N4M1</a>
<b>Cytogenetics:</b>	1p21.3
<b>Protein Families:</b>	Transmembrane