

Product datasheet for **RG208838**

ZAP70 (NM_001079) Human Tagged ORF Clone

Product data:

Product Type:	Expression Plasmids
Product Name:	ZAP70 (NM_001079) Human Tagged ORF Clone
Tag:	TurboGFP
Symbol:	ZAP70
Synonyms:	ADMIO2; IMD48; SRK; STCD; STD; TZK; ZAP-70
Mammalian Cell Selection:	Neomycin
Vector:	pCMV6-AC-GFP (PS100010)
E. coli Selection:	Ampicillin (100 ug/mL)



[View online »](#)

ORF Nucleotide Sequence:

>RG208838 representing NM_001079
 Red=Cloning site Blue=ORF Green=Tags(s)

TTTTGTAATACGACTCACTATAGGGCGGCCGGAATTCGTCGACTGGATCCGGTACCGAGGAGATCTGCC
 GCC**CGGATCGCC**

ATGCCAGACCCCGCGGCACCTGCCCTTCTTCTACGGCAGCATCTCGCTGCCGAGCCGAGGAGCACC
 TGAAGCTGGCGGCATGGCGACGGCTCTTCTGCTGCCAGTGCCTGCGCTCGCTGGCGGCTATGT
 GCTGTCGCTCGTGACAGTGTGCGCTTCCACCCTTCCCATCGAGCGCCAGCTCAACGGCACCTACGCC
 ATTGCCGGCGCAAAGCGCACTGTGGACCGGCAGAGCTCTGCGAGTTCTACTCGCGCACCACCGGCG
 TGCCCTGCAACCTGCGCAAGCCGTGCAACCGGCCGTGGGCTCGAGCCGAGCCGGGGTCTTCTGACTG
 CCTGCGAGACGCCATGGTGCCTGACTACGTGCGCCAGAGCTGGAAGCTGGAGGGCGAGGCCCTGGAGCAG
 GCCATCATCAGCCAGGCCCGCAGGTGGAGAAGCTCATTGCTACGACGGCCACGAGCGGATGCCCTGGT
 ACCACAGCAGCCTGACCGGTGAGGAGGCCGAGCGCAAACCTTACTCTGGGGCGCAGCCGAGCGCAAGTT
 CCTGCTGAGGCCCGGAAGGAGCAGGGCACATACGCCCTGTCCCTCATCTATGGGAAGACGGTGTACCAC
 TACCTCATCAGCCAAGACAAGGCCGGCAAGTACTGCATTCAGGAGGCCACCAAGTTTGACACGCTCTGGC
 AGCTGGTGGAGTATCTGAAGCTGAAGGCGGACGGGCTCATCTACTGCCTGAAGGAGGCTGCCCAACAG
 CAGTGCCAGCAACGCCTCAGGGGCTGCTGCTCCACACTCCCAGCCACCATCCACGTTGACTCATCTCT
 CAGAGACGAATCGACACCCTCAACTCAGATGGATACACCCTGAGCCAGCAGCATAACGTCACAGACA
 AACCGCGCCGATGCCATGGACACGAGCGTGTATGAGAGCCCTACAGCGACCCAGAGGAGCTCAAGGA
 CAAGAAGCTCTTCTGAAGCGGATAACCTCCTCATAGCTGACATTGAACTTGGCTGCGGCAACTTTGGC
 TCAGTGGCCAGGGCGTGTACCGCATGCGCAAGAAGCAGATCGACGTGGCCATCAAGGTGCTGAAGCAGG
 GCACGGAGAAGGCAGACACGGAAGAGATGATGCGCGAGGCGCAGATCATGCACCAGCTGGACAACCCCTA
 CATCGTGGCGCTCATTGGCGCTCTGCCAGGCCGAGGCCCTCATGCTGGTCAATGGAGATGGCTGGGGCGGG
 CCGCTGCACAAGTTCTGGTGGCAAGAGGAGGAGATCCCTGTGAGCAATGTGGCCGAGCTGCTGCACC
 AGGTGTCCATGGGGATGAAGTACCTGGAGGAGAAGAACTTTGTGCACCGTGACCTGGCGCCCGCAACGT
 CCTGCTGGTTAACCGGCACTACGCCAAGATCAGCGACTTTGGCTCTCCAAGCACTGGGTGCCGACGAC
 AGCTACTACACTGCCGCTCAGCAGGGAAGTGGCCGCTCAAGTGGTACGCACCCGAATGCATCAACTTCC
 GCAAGTTCTCCAGCCGACGCGATGTCTGGAGCTATGGGGTACCATGTGGGAGGCCTTGTCTACGGCCA
 GAAGCCCTACAAGAAGATGAAAGGGCCGAGGTATGGCCTTCATCGAGCAGGGCAAGCGGATGGAATGC
 CCACCAGAGTGTCCACCGAACTGTACGCACTCATGAGTACTGCTGGATCTACAAGTGGGAGGATCGCC
 CCGACTTCTGACCGTGGAGCAGCGCATGCGAGCCTGTTACTACAGCCTGGCCAGCAAGGTGGAAGGCC
 CCCAGGCAGCACACAGAAGGCTGAGGCTGCCTGTGCC

AG**CGGACCG**ACGCGTACGCGGCCGCTCGAG - GFP Tag - GTTTAA

Protein Sequence:

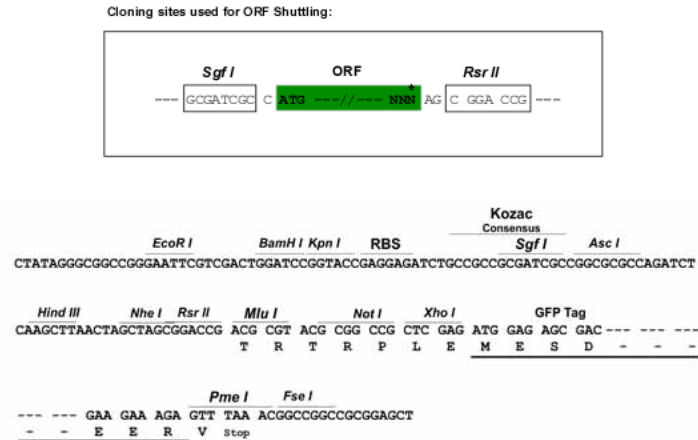
>RG208838 representing NM_001079
 Red=Cloning site Green=Tags(s)

MPDPA AHL PFFYGSISR AEAEHLKLAGMADGLFLLRQCLRSLGGYVLSLVHDVRFHHFPIERQLNGTYA
 IAGGKAHCGPAELCEFYSRDPDGLPCNLRKPCNRPSGLEPQPGVFDCLRDMVRDYVRQTWKLEGEALEQ
 AIISQAPQVEKLIATTAHERMPWYHSSLTREEAERKLYSQAQTDGKFLLRPRKEQGTYSLSIYGKTVYH
 YLISQDKAGKYCIPEGTKFDLWQLVEYLKADGLIYCLKEACPNSSASNASGAAAPTLPAPSTLTHP
 QRRIDTLNSDGYTPEPARITSPDKPRPMPMDTSVYESPYSDPEELKDKKFLKRDNLIIADIELGCGNFG
 SVRQGVYRMRKQIDVAIKVLKQGTTEKADTEEMMREAQIMHQLDNPYIVRLIGVCQAEALMLVMEMAGGG
 PLHKFLVGKREEIPVSNVAELLHQVSMGMKYLEEKNFVHRDLAARNVLLVNRHYAKISDFGLSKALGADD
 SYYTARSAGKWPLKWYAPECINFRKFSRSDVWSYGVTMWEALSYGQKPYKMKMGPEVMAFIEQGRMEC
 PPECPELYALMSDCWIYKWEDRPDFLVEQRMRACTYSLASKVEGPPGSTQKAEAAAC

SGP**TRRRLE** - GFP Tag - V

Restriction Sites:

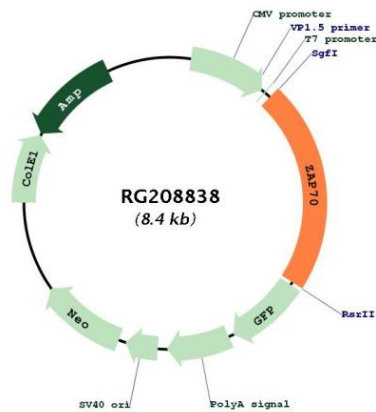
SgfI-RsrII

Cloning Scheme:


- ACCN:** NM_001079
- ORF Size:** 1857 bp
- OTI Disclaimer:** Due to the inherent nature of this plasmid, standard methods to replicate additional amounts of DNA in E. coli are highly likely to result in mutations and/or rearrangements. Therefore, OriGene does not guarantee the capability to replicate this plasmid DNA. Additional amounts of DNA can be purchased from OriGene with batch-specific, full-sequence verification at a reduced cost. Please contact our customer care team at custsupport@origene.com or by calling 301.340.3188 option 3 for pricing and delivery.
- The molecular sequence of this clone aligns with the gene accession number as a point of reference only. However, individual transcript sequences of the same gene can differ through naturally occurring variations (e.g. polymorphisms), each with its own valid existence. This clone is substantially in agreement with the reference, but a complete review of all prevailing variants is recommended prior to use. [More info](#)
- OTI Annotation:** This clone was engineered to express the complete ORF with an expression tag. Expression varies depending on the nature of the gene.
- Components:** The ORF clone is ion-exchange column purified and shipped in a 2D barcoded Matrix tube containing 10ug of transfection-ready, dried plasmid DNA (reconstitute with 100 ul of water).
- Reconstitution Method:**
1. Centrifuge at 5,000xg for 5min.
 2. Carefully open the tube and add 100ul of sterile water to dissolve the DNA.
 3. Close the tube and incubate for 10 minutes at room temperature.
 4. Briefly vortex the tube and then do a quick spin (less than 5000xg) to concentrate the liquid at the bottom.
 5. Store the suspended plasmid at -20°C. The DNA is stable for at least one year from date of shipping when stored at -20°C.
- RefSeq:** [NM_001079.3](#), [NP_001070.2](#)

RefSeq Size:	2450 bp
RefSeq ORF:	1860 bp
Locus ID:	7535
UniProt ID:	P43403
Cytogenetics:	2q11.2
Protein Families:	Druggable Genome, Protein Kinase
Protein Pathways:	Natural killer cell mediated cytotoxicity, Primary immunodeficiency, T cell receptor signaling pathway
Gene Summary:	This gene encodes an enzyme belonging to the protein tyrosine kinase family, and it plays a role in T-cell development and lymphocyte activation. This enzyme, which is phosphorylated on tyrosine residues upon T-cell antigen receptor (TCR) stimulation, functions in the initial step of TCR-mediated signal transduction in combination with the Src family kinases, Lck and Fyn. This enzyme is also essential for thymocyte development. Mutations in this gene cause selective T-cell defect, a severe combined immunodeficiency disease characterized by a selective absence of CD8-positive T-cells. Two transcript variants that encode different isoforms have been found for this gene. [provided by RefSeq, Jul 2008]

Product images:



Circular map for RG208838