

Product datasheet for **RG208834**

ZNF740 (NM_001004304) Human Tagged ORF Clone

Product data:

Product Type: Expression Plasmids
Product Name: ZNF740 (NM_001004304) Human Tagged ORF Clone
Tag: TurboGFP
Symbol: ZNF740
Synonyms: Zfp740
Mammalian Cell Selection: Neomycin
Vector: pCMV6-AC-GFP (PS100010)
E. coli Selection: Ampicillin (100 ug/mL)
ORF Nucleotide Sequence: >RG208834 representing NM_001004304
 Red=Cloning site Blue=ORF Green=Tags(s)

TTTTGTAATACGACTCACTATAGGGCGCCGGGAATTCGTCGACTGGATCCGGTACCGAGGAGATCTGCC
 GCC**CGATCGCC**

ATGGCTCAGGCAAGTCTCCTGGCTTGTGAAGGCCTAGCAGGTGTGAGTTGGTCCCCTGCAGCCAGCA
 AGAAGATGATGCTGAGCCAGATTGCCAGCAAGCAGGCCGAGAATGGCGAGCGGCCAGGTAGCCCTGATGT
 GCTGAGGTGCTCGAGTCAGGGTACCGAAAAGACAGTGATAAGTCCCGGAGCCGAAAGATGATGACAGC
 TTGTCTGAGGCCCTCATTCAAAAAGACTGTTAAAAAGTGGTGGTAGTGAACAAAATGGTTCTTTTC
 AAGTAAAGATTCCAAAAATTTGTTTGTGAACACTGCTTTGGAGCCTTTCGGAGCAGTTACCACCTAAA
 GAGGCACATCCTTATTCACACTGGTGAAGCCATTTGAATGCGATATATGTGATATGCGTTTCATCCAG
 AAGTACCACCTGGAACGCCACAAGCGTGTGCACAGTGGTAAAAGCCTTACCAGTGTGAACGGTGTGATC
 AGTGTCTTCTCGGACAGATCGATTACTCAGACACAAACGGATGTGCCAAGGGTGCCAGTCCAAGACTTC
 CGACGGGCAGTTTTCTCTA

ACGCGTACGCGGCCGCTCGAG - GFP Tag - GTTTAA

Protein Sequence: >RG208834 representing NM_001004304
 Red=Cloning site Green=Tags(s)

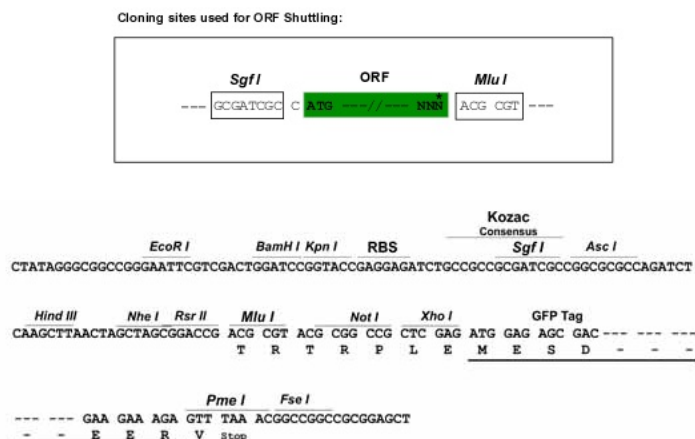
MAQASLLACEGLAGVSLVPTAASKMMLSQIASKQAENGERAGSPDVLRCSSQGHKRDSDKSRSRKDDDS
 LSEASHSKKTVKKVVVVEQNGSFQVKIPKNFVCEHCFGAFRSSYHLKRHILIHTEKPFECIDCMRFIQ
 KYHLERHKRVHSGEKPYPYQCFERCHQCFSRTRDRLLRHKRMCQGCQSKTSDGQFSL

TRTRPLE - GFP Tag - V

Restriction Sites: Sgfl-MluI



[View online »](#)

Cloning Scheme:


ACCN: NM_001004304

ORF Size: 579 bp

OTI Disclaimer: The molecular sequence of this clone aligns with the gene accession number as a point of reference only. However, individual transcript sequences of the same gene can differ through naturally occurring variations (e.g. polymorphisms), each with its own valid existence. This clone is substantially in agreement with the reference, but a complete review of all prevailing variants is recommended prior to use. [More info](#)

OTI Annotation: This clone was engineered to express the complete ORF with an expression tag. Expression varies depending on the nature of the gene.

Components: The ORF clone is ion-exchange column purified and shipped in a 2D barcoded Matrix tube containing 10ug of transfection-ready, dried plasmid DNA (reconstitute with 100 ul of water).

Reconstitution Method:

1. Centrifuge at 5,000xg for 5min.
2. Carefully open the tube and add 100ul of sterile water to dissolve the DNA.
3. Close the tube and incubate for 10 minutes at room temperature.
4. Briefly vortex the tube and then do a quick spin (less than 5000xg) to concentrate the liquid at the bottom.
5. Store the suspended plasmid at -20°C. The DNA is stable for at least one year from date of shipping when stored at -20°C.

RefSeq: [NM_001004304.4](#)

RefSeq Size: 2154 bp

RefSeq ORF: 582 bp

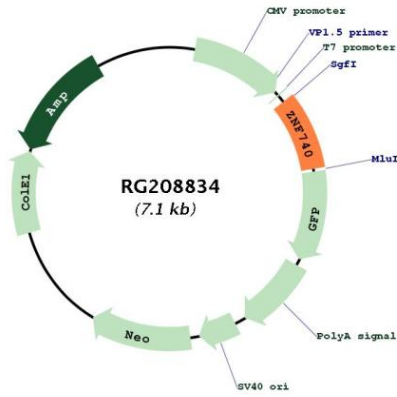
Locus ID: 283337

UniProt ID: [Q8NDX6](#)

Cytogenetics: 12q13.13

Gene Summary: May be involved in transcriptional regulation.[UniProtKB/Swiss-Prot Function]

Product images:



Circular map for RG208834