

Product datasheet for **RG208825**

ARHGAP30 (NM_181720) Human Tagged ORF Clone

Product data:

Product Type:	Expression Plasmids
Product Name:	ARHGAP30 (NM_181720) Human Tagged ORF Clone
Tag:	TurboGFP
Symbol:	ARHGAP30
Mammalian Cell Selection:	Neomycin
Vector:	pCMV6-AC-GFP (PS100010)
E. coli Selection:	Ampicillin (100 ug/mL)



[View online »](#)

ORF Nucleotide Sequence:

>RG208825 representing NM_181720
 Red=Cloning site Blue=ORF Green=Tags(s)

GACGTTGTATACGACTCCTATAGGGCGGCCGGGAATTCGTCGACTGGATCCGGTACCGAGGAGATCTGCC
 GCCGGCGCGCC

ATGAAGTCTCGGCAGAAAGGAAAGAAGAAGGGCAGCGCAAAGGAGCGGGTTTTGGTGCGACTTGCAGG
 AGCACCTGCAGCACTCAGGCCAGGAGGTGCCCCAGGTGCTAAAGAGCTGTGCAGAATTTGTGGAGGAGTA
 TGGAGTGGTGGATGGGATCTACCGCCTCTCAGGGGTCTCCTCCAACATCCAGAAGCTTCGCGAGGAATTG
 GAGTCAGAGCGGAAGCCAGACCTGCGTCGGGATGTTTACCTCCAAGACATTCAGTGCCTCTCCTCCCTGT
 GCAAGGCCTATTTAGAGAACTGCCGATCCCCTGCTCACTTACCGGCTCTATGACAAGTTTGTGAGGC
 TGTAGGAGTGAATTTGAACTGAGCGCTTGGTCAAGATCCTAGAGGTGCTTCGGAACTCCCTGTCCCA
 AACTACAGGACCCTGGAGTTCTCATGAGGCATTGGTACACATGGCCTCATTAGTCCCAGACCAACA
 TGCATGCTCGAACCTGGCCATCGTGTGGGCTCCCAACCTGCTGAGGTCTAAGGACATAGAGGCCTCAGG
 CTTCAATGGGACAGCGGCTTCATGGAGGTGCGGGTACAATCCATCGTGTGGAGTTCATCTCACACAC
 GTGGACCAGCTCTTTGGGGGTGCTGCCCTCTGTTGGTGGAGGTGGAGAGTGGGTGGCGATCGCTTCCAG
 GGACCCGGGCATCAGGCAGCCCCGAGGACCTTATGCCAGGCCACTGCCTTATCACCTGCCTAGCATACT
 GCAGGCTGGCGATGGACCCACAGATGCGGCCCTACCATACTATCATCGAGATTGCAGAGCACAAGAGG
 AAGGGTCTTTGAAGGTCAGGAAGTGGAGGTCTATCTTCAATTTAGTTCGCTCTGGCCATGAGACTAAGC
 GTAACCTCCACGGGGGGCTGAGGACAGGGAGGATAAATCCAACAAGGGGACACTGCGGCCAGCCAAAAG
 CATGGACTCACTGAGTGTGCAGCTGGGGCCAGTGATGAGCCAGAGGGGCTGGTGGGGCCAGCAGCCCC
 CGGCCAAGCCATTGCTGCCTGAGAGCTTGGAGAACGATTCTATAGAGGCAGCAGAGGGTGAACAGGAGC
 CTGAGGCAGAACTGGGTGGCACAACCTCTGAACCAGGCACACCAGAGCTGGGCGGTGAGCCATCCG
 GGCTGGGGCAGCAGCCGTGAGAACGCTGTGCTGGTGTCCACATCTCAGACCCCTACAATGTCAACCTC
 CCGCTACACATCACCTCTATCCTCAGTGTGCCCGAACATCATCTAACGTTTCTTGGCCAGGCTCA
 CCCGTGGCCTTGAGTGCCTGCTCTACAGCACCGGCCAAGCCCTGCCTCTGGCCCTGGCCCTGGCCCTGG
 CCTTGGCCCTGGCCCCCAGATGAAAAGTTGGAAGCAAGTCCAGCCTCAAGTCCCCTGGCAGACTCAGGC
 CCAGACGACTTGGCTCCTGCCCTGGAGGACTCGCTGTCCAGGAGGTGCAGGACTCCTTCTCCTCTAG
 AGGACTCAAGCAGCTCAGAACCTGAGTGGGTGGGGCAGAGGATGGGGAGGTGGCCAGGCAGAAGCAGC
 AGGAGCAGCCTTCTCCCCTGGGAGGACAGCCCTGGGATGGGCTACCTGGAGGAGCTCCTGGGAGTTGGG
 CCTCAGGTGGAGGAGTTCTGTGGAGCCACCCTGGATGACCTGTCTCTGGATGAGGCACAGTTTGTCT
 TGGCCCCAGCTGCTGTTCCGTGGACTCCGCTGGCCCCAGGCCTGAAGTTGAGGAGGAAAATGGGGAGGA
 AGTTTTCTGAGTGCCTATGATGACCTAAGTCCCCTTCTGGGACCTAAACCCCAATCTGGAAGGGTTCA
 GGGAGTCTGGAGGGAGAGGCAGCAGGATGTGGAAGGCAGGCTCTGGGACAGGGTGGGGAAGAGCAGGCAT
 GCTGGGAAGTTGGGGAGGACAAGCAGGCTGAGCCTGGAGGCAGGCTAGACATCAGGGAAGAGGCAGAGGG
 AAGTCCACAGCCACCTCAGCCAGAGGAGATGGAGCCTGAGGGGCAGCCAGTCCAGACGGCTGTCTATGC
 CCCTGTTCTCTTGGCCTGGGTGGCGTGGCATGCGTCTAGCTTCCACTCTGGTTCAGGTCCAACAGGTCC
 GCTCTGTGCTGTGGTGGCCCCAAGCCACAGTTTGCCAAGATGCCAGTGAATGTGTAGCAAGATTCA
 TGTGGCACCTGCAAAATCCATGCCGAGGCTGGCCGGCTTGTATGGGACTCCTGGAGAAAGGGCTTGGGG
 TCCCGAGCTTCTCGATCCTCTTGGAGGAATGGGGTAGTCTTTCCTTTGATGCTGTGTGGCCCTAGCCC
 GGGACCGCAAAGGACTGAGGCTCAAGGAGTTCGGCGAACCCAGACCTGTACTGAGGGTGGGGATTACTG
 CCTCATCCCAGAACCTCCCCTGTAGCATGATCTCTGCCATTCTCCTCGGCCCTTAGCTGCCTGGAG
 CTCCCATCTGAAGGTGCAGAAGGTCTGGATCCCAGGAGTCTTGTAGTCTGCCCCCAGAGAACCCAGG
 TTCCTGACCCCTGTTGCTCTCAGCGCAGATCATATGCATTTGAAACACAGGCTAACCTGGGAAAGG
 TGAAGGACTG

ACGCGTACGCGGCCGCTCGAG – GFP Tag – GTTTAA

Protein Sequence: >RG208825 representing NM_181720
Red=Cloning site Green=Tags(s)

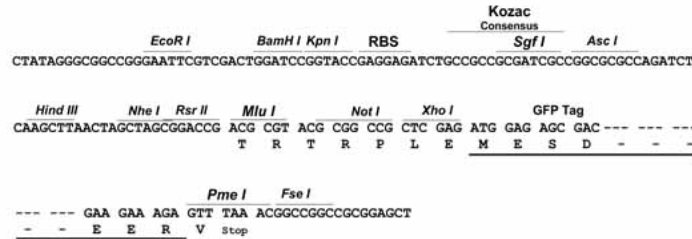
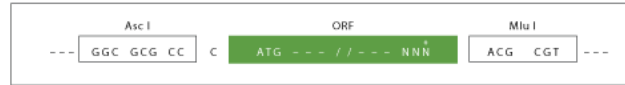
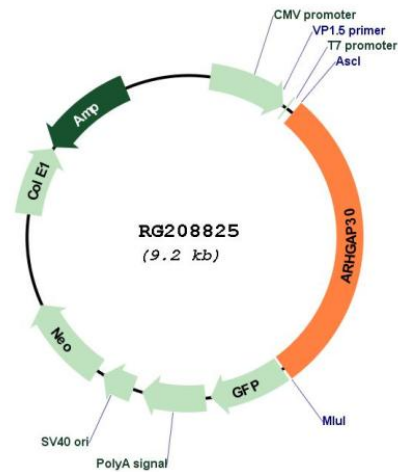
```
MKSRQKGKKKGS AKERVFGCDLQEHLQHSGQEVPPV LKSCAEFVEEYGVVDGIYRLSGVSSNIQKLRQEL  
ESERKPD LRRDVYLQDIHCVSSLCKAYFRELDPDLLTYRLYDKFAEAVGVQLEPERLVKILEVLRPLVVP  
NYRTL EFLMRHLVHMASFSAQTNMHARNLAIWAPNLLRSKDIEASGFNGTAAFMEVRVQSIVVEFILTH  
VDQLFGGAALSGGEVESGWRSLPGTRASGSPEDLMRPLPYHLPSILQAGDGPPQMRPYHTIIEIAEHKR  
KGS LKVRKWR SIFNLGRSGHETKRKLPRGAEDREDKSNKGTLRPAKSMDLSAAAGASDEPEGLVGPSSP  
RPSPLLPE SLEND SIEAAEGEQEPEAEALGGTNS EPGTPRAGRS AIRAGGSSRAERCAGVHISDPYNVNL  
PLHITSILSVPPNIISNVSLARLTRGLECPALQHRPSPASGPGPGPLGPGPPDEKLEASPASSPLADSG  
PDDLPALED SLSQEVQDSFSFLEDSSSSEPEWVGAEDGEVAQAE AAGAAFSPGEDDPGMGYLEELLGVG  
PQVEEFSVEPPLDDL SLDEAQFVLAPSCCSVDSAGPRPEVEEENGEEVFLSAYDDLSPLLGPKPPIWKGS  
GSLEGEAAAGCGRQALGQGGEEQACWEVGEDKQAE PGGRLDIREEAE GSPQPPQPEEMEPEGQPSPDGCLC  
PCSLGLGGVGMRLASTLVQVQVRSVPVPPKQFAKMP SAMCSKIHVAPANPCPRPGRLDGTGERAWG  
SRASRSSWRNGGSLSFDA AVALARDRQRTEAQGVRRRTQTCTEGGDYCLIPRTSPCSMISAHSRPLSCL  
LPSEGAEGSGSRSLSLPPREPQVPDLLSSQRRSYAFETQANPGKGEGL
```

TRTRPLE - GFP Tag - V

Restriction Sites: AscI-MluI

Cloning Scheme:

Cloning sites used for ORF Shuttling:


Plasmid Map:


ACCN:	NM_181720
ORF Size:	2670 bp
OTI Disclaimer:	The molecular sequence of this clone aligns with the gene accession number as a point of reference only. However, individual transcript sequences of the same gene can differ through naturally occurring variations (e.g. polymorphisms), each with its own valid existence. This clone is substantially in agreement with the reference, but a complete review of all prevailing variants is recommended prior to use. More info
OTI Annotation:	This clone was engineered to express the complete ORF with an expression tag. Expression varies depending on the nature of the gene.
Components:	The ORF clone is ion-exchange column purified and shipped in a 2D barcoded Matrix tube containing 10ug of transfection-ready, dried plasmid DNA (reconstitute with 100 ul of water).
Reconstitution Method:	<ol style="list-style-type: none">1. Centrifuge at 5,000xg for 5min.2. Carefully open the tube and add 100ul of sterile water to dissolve the DNA.3. Close the tube and incubate for 10 minutes at room temperature.4. Briefly vortex the tube and then do a quick spin (less than 5000xg) to concentrate the liquid at the bottom.5. Store the suspended plasmid at -20°C. The DNA is stable for at least one year from date of shipping when stored at -20°C.
RefSeq:	NM_181720.1
RefSeq Size:	3888 bp
RefSeq ORF:	2673 bp
Locus ID:	257106
UniProt ID:	Q7Z6I6
Cytogenetics:	1q23.3
Gene Summary:	GTPase-activating protein (GAP) for RAC1 and RHOA, but not for CDC42.[UniProtKB/Swiss-Prot Function]