

Product datasheet for **RG208744**

C13orf24 (PIBF1) (NM_006346) Human Tagged ORF Clone

Product data:

Product Type:	Expression Plasmids
Tag:	TurboGFP
Symbol:	C13orf24
Synonyms:	C13orf24; CEP90; JBTS33; PIBF
Mammalian Cell Selection:	Neomycin
Vector:	pCMV6-AC-GFP (PS100010)
E. coli Selection:	Ampicillin (100 ug/mL)



[View online »](#)

ORF Nucleotide Sequence: >RG208744 representing NM_006346
Red=Cloning site Blue=ORF Green=Tags(s)

TTTTGTAATACGACTACTATAGGGCGCCGGGAATTCGTGCGACTGGATCCGGTACCGAGGAGATCTGCC
GCCGCGATCGCC

ATGCTCGAAAAATTTCAAAGGAGTCAAAAAAGTGAAACATCTCTAGTTCTCTGGAATCTGAAGATTA
GTTTAGAAACAACAGTTCTACGGATGATATTTCTCATCAGAAGAGCGAGAGGGCAAAGTCAAGATCAC
CAGGCAGCTAATTGAACGAAAAGAAGTACTTTCATAATTCAGTTACTAAAAATTTGAGCTATCCCAGAAA
ACTATGATGATCGACAATTTGAAAGTGGATTATCTTACAAAGATTGAAGAATTTGGAGGAGAAAAGTAAATG
ATGCACTTACCAGAAGCAGCTACTAACATTGAGATTAGACAACCAATTTGGCTTTTCAACAGAAAAGATG
CAGCAAAATCAAGAATTAATGAAACAAGAAATGGAAACCATTTTGTGAGACAGAAAACAAGTAAAGAG
ACAAATCTTCAGCTAAGAGAAAAGCTGGAGATGTTTCGTGAAACCTGCGTGACTTTGAGTTGACAGAAG
AGCAATATATTAATTAAGCTTTTCTGAAGATCAGCTTTCTATTCTGAATATGTATCTGTTGCTT
CTATGAGCTAGTGAATCCATTAGAAAGGAAATCTGTGAACACAAGTAAAAAGAAATCTCAGCAGAA
GAATTAAGTACAAACAAAACCAACTGAAGCAGCTGACAGAGACATATGAGGAAGATCGAAAAAAGTACT
CTGAAGTTCAAATTAGATGTCAACGTTTGGCCTTAGAATTAGCAGACACAAAACAGTTAATTCAGCAAGG
TGACTACCGTCAAGAGAAGTATGATAAGTCAAGAGTGAACGTGATGCACTTGAACAGGAAGTAAATGAG
CTTAGGAGAAAACATGAAACTTTGAAGCCTCTCACATGATTCAACAAAAGAACGAAAGTGAATTAACA
AAGAGGTAGTCACCTTAGAGCAAACTGTTACTTTACTGCAAAAGGATAAAGAATATCTTAATCGCCAAA
CATGGAGCTTAGTGTTCGCTGTGCTCATGAAGAGGATCGCCTTGAAGACTTCAAGCTCAACTGGAAGAA
AGCAAAAAGGCTAGAGAAGAGATGTATGAAAAATGTAGCATCCAGAGACCATTATAAACAGAAATG
AAAATAAATACATGATGAACTAGAACAAATCAGATTGAAAACCAACCAAGAAATGATCAACTTCGAAA
TGCTCTAGGGAAATGTATGAACGAGAAAACAGAAATCTCCGAGAAGCAAGGGATAATGCTGTGGCTGAA
AAGGAACGAGCAGTGATGGCTGAAAAGGATGCTTTAGAAAAACACGATCAGCTCTTAGACAGGTACAGAG
AACTACAACCTTAGTACAGAAAGCAAAGTAAACAGAAATTTCCATCAAAGTAAATTAATCTTTTGAAG
TGAGCGTGTCAACTTCTGCAAGAGGAAACAGCAAGAAATCTCACACAGTGTCAATTGGAATGTAAAA
TATCAGAAAAAATTTGGAGGTTTTAACCAAGAATTTTATAGTCTCCAAGCCTTCTGAAAAACGCATTA
CTGAACTTCAAGCACAGAAGTCAAGCATCAAGCAAGGCTAGACATTTATGAGAAAAGTAAAAAGAGCT
TGATGAAATAAATGCAAACTGCAGAAATGAAAATGAAGATGAGGCTGAAAGGGTCTTTTTCTAC
GGCTATGGTGCTAATGTTCCCAACACGCCAAAAGACGACTAAAGCAAAGTGTTCACCTTGCAAGAAAG
TGCTTCAATTAGAAAAACAAAAGTCTGATTTTAAAAGATCTGGAACATCGAAAGGACCAAGTAAACACA
GCTTTCACAAGAGCTTACAGAGCCAAATTCGCTATTAACCAGACTCAACAGCCTTACAGGTATCTCATT
GAATCAGTGCCTCAGAGAGATTCTAAGATTGATTCAGTACGGAATCTATTGCACAAGTGAAGAAAGT
TCAGCAACTTAAATAAAGAAAAGTCAAGCTTTACTACAGACGAAGAATCAATGGCATTAGATTTAGAACA
ACTTCTAAATCATCGTGAGGAATTTGGCAGCAATGAAACAGATTCTCGTTAAGATGCATAGTAAACATTCT
GAGAACAGCTTACTTCTCACTAAAACAGAACAAAACATGTGACAGAAAATCAGAAATCAAAGACTTTGA
ATGTGCCTAAAGAGCATGAAGACAATATTTACACCTAAACCAACTCTTTACTAAAAAAGAGCACC
TGAGTGGTCTAAGAAACAAAAGATGAAGACC

ACGCGTACGCGGCCGCTCGAG - GFP Tag - GTTTAA

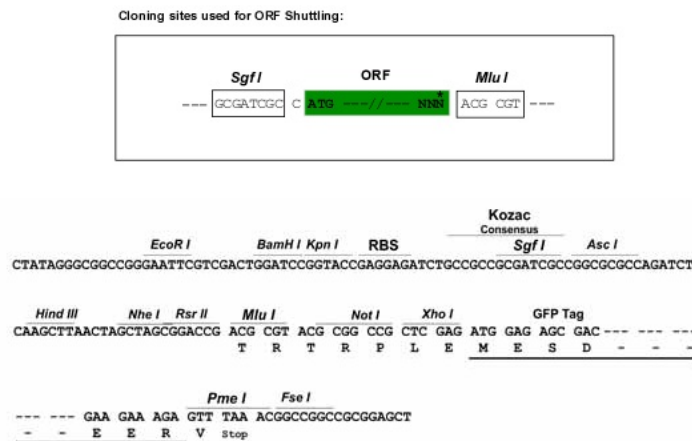
Protein Sequence: >RG208744 representing NM_006346
 Red=Cloning site Green=Tags(s)

MSRKISKESKVKVNISSSLESEDISLETTVPTDDISSSEEREGKVRITRQLIERKELLHNIQLLKIELSQK
 TMMIDNLKVDYLTKEELEEKLNDAHQKQLLTLRLDNQLAFQKQDASKYQELMKQEMETILLRQKQLEE
 TNLQLREKAGDVRRLRDFELTEEQYIKLKAFPEDQLSIPEYVSVRFYELVNPLRKEICELQVKKNILAE
 ELSTNKNQLKQLTETYEDRKNYSEVQIRCQLALELADTKQLIQQGDYRQENYDKVKSERDALEQEVIE
 LRRKHEILEASHMIQTKERSELKVEVVTLEQTVTLQKDKKEYLNRQNMELSVRCAHEEDRLERLQAQLEE
 SKKAREEMYEKYVASRDHYKTEYENKLHDELEQIRLKTNQEIDQLRNASREMYERENRNLREARNAVAE
 KERAVMAEKDALEKHDQLLDYRELQLSTESKVFELHQSKLKSFESEVQLLQEETARNLTQCQLECEK
 YQKKLEVLTKEFYSLQASSEKRITELQAQNSEHQARLDIYEKLEKELDEIMQTAEIENEDAERVLFSY
 GYGANVPTTAKRRLKQSVHLARRVLQLEKQNSLILKDLHRKDQVTQLSQELDRANSLLNQTQQPYRYLI
 ESVRQRDSKIDSLTESIAQLEKDVSNLNKEKSALLQTKNQMALDLEQLLNHREELAAMKQILVKMHSKHS
 ENSLLLTKTEPKHVTENQKSKTLNVPKEHEDNIFTPKPTLFTKKEAPEWSKKQKMKT

TRTRPLE - GFP Tag - V

Restriction Sites: SgfI-MluI

Cloning Scheme:



ACCN: NM_006346

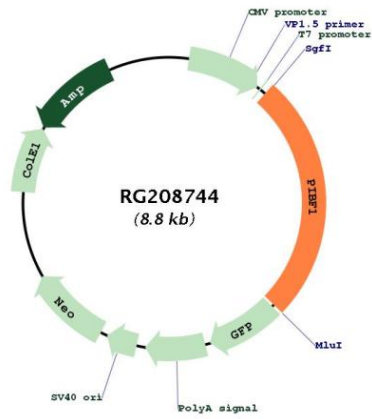
ORF Size: 2271 bp

OTI Disclaimer: The molecular sequence of this clone aligns with the gene accession number as a point of reference only. However, individual transcript sequences of the same gene can differ through naturally occurring variations (e.g. polymorphisms), each with its own valid existence. This clone is substantially in agreement with the reference, but a complete review of all prevailing variants is recommended prior to use. [More info](#)

OTI Annotation: This clone was engineered to express the complete ORF with an expression tag. Expression varies depending on the nature of the gene.

Components:	The ORF clone is ion-exchange column purified and shipped in a 2D barcoded Matrix tube containing 10ug of transfection-ready, dried plasmid DNA (reconstitute with 100 ul of water).
Reconstitution Method:	<ol style="list-style-type: none">1. Centrifuge at 5,000xg for 5min.2. Carefully open the tube and add 100ul of sterile water to dissolve the DNA.3. Close the tube and incubate for 10 minutes at room temperature.4. Briefly vortex the tube and then do a quick spin (less than 5000xg) to concentrate the liquid at the bottom.5. Store the suspended plasmid at -20°C. The DNA is stable for at least one year from date of shipping when stored at -20°C.
Note:	Plasmids are not sterile. For experiments where strict sterility is required, filtration with 0.22um filter is required.
RefSeq:	NM_006346.4
RefSeq Size:	3114 bp
RefSeq ORF:	2274 bp
Locus ID:	10464
UniProt ID:	Q8WXW3
Cytogenetics:	13q21.33-q22.1
Gene Summary:	This gene encodes a protein that is induced by the steroid hormone progesterone and plays a role in the maintenance of pregnancy. The encoded protein regulates multiple facets of the immune system to promote normal pregnancy including cytokine synthesis, natural killer (NK) cell activity, and arachidonic acid metabolism. Low serum levels of this protein have been associated with spontaneous pre-term labor in humans. This protein may promote the proliferation, migration and invasion of glioma. [provided by RefSeq, Mar 2017]

Product images:



Circular map for RG208744