

Product datasheet for **RG208742**

RFPL2 (NM_006605) Human Tagged ORF Clone

Product data:

Product Type: Expression Plasmids
Product Name: RFPL2 (NM_006605) Human Tagged ORF Clone
Tag: TurboGFP
Symbol: RFPL2
Synonyms: RNF79
Mammalian Cell Selection: Neomycin
Vector: pCMV6-AC-GFP (PS100010)
E. coli Selection: Ampicillin (100 ug/mL)
ORF Nucleotide Sequence: >RG208742 representing NM_006605
 Red=Cloning site Blue=ORF Green=Tags(s)

TTTTGTAATACGACTCACTATAGGGCGGCCGGAATTCGTCGACTGGATCCGGTACCGAGGAGATCTGCC
 GCC**CGATCGCC**

ATGGCTGCACTCTCCAAGAAGCAAGCAGCTGTCCCGTCTGCTCAGACTATCTGGAAAACCAATGTCCC
 TGGAGTGTGGATGCGCCGTCTGCCTCAAGTGCATTAATCACTGCAGAAGGAGCCCCATGGGAGGATCT
 ACTTTGCTGTGCTCTTCCATGGTCTCTCGAAGAACAAAATCAGGCGCAATCGGCAGCTAGAGAGGCTG
 GCTTCCACATCAAGGAAGTGGAGCCCAAGCTGAAGAAGATTCTGCAGATGAACCAAGGATGCGGAAGT
 TCCAAGTGGATATGACCTTGGATGCCAACACAGCCAACAACCTTCTCCTCATTCTGACGACCTCAGGAG
 CGTCCGAAGTGGGCGCATCAGACAGAATCGGCAAGACCTTGCCGAGAGATTTGACGTGTCCGTTTGCATC
 CTGGGCTCCCCTCGCTTTACCTGTGGCCGCCACTGCTGGGAGGTGGACGTGGGAACAAGCACAGAATGGG
 ACCTGGGAGTCTGCAGAGAATCTGTTACCCGCAAAGGGAGGATCCAGCTGACCACAGAGCTTGGATTCTG
 GACTGTGAGTTTGGGGATGGAGGCCGCTCTCTGCCACCACGGTGCCGCTGACTTTCCTCTTCTGAGAC
 CGCAAGTTACAGCGAGTGGGATTTTTCTGGATATGGGCATGCAGAACGTTTCTTTTTTGTGCTGAAA
 GTGGTTCCCATGTCTATACATTCAGGAGCGTATCTGCTGAGGAGCCATTGCGCCATTTTTGGCTCCTTC
 AGTTCACCTAATGGTGTCAAGGTGTCTTGTGATCTGCTCCTTTGATGAACTCAGGCACTACTGATGCT
 CCAGTCCGTCCTGGGAGGCCAAA

ACGCGTACGCGGCCGCTCGAG - GFP Tag - GTTTAA



[View online »](#)

Protein Sequence: >RG208742 representing NM_006605
 Red=Cloning site Green=Tags(s)

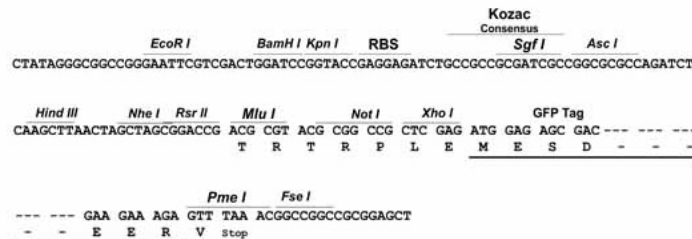
MAALFQEASSCPVCS DYLEKPM SLECGCAVCLK CINS LQKEPHGEDLLCCSSMVS RKNKIRRN RQLERL
 ASHIKELEPKLKKILQMNPRMRKFQVDM TLDANTANNFL LISDDLRSVRSGRIRQNRQDLAERFDVSVCI
 LGS PRFTCGRH CWEVDVGTSTEWDLGVCRE SVHRKGRIQLTTELGFWTVSLRDGGRLSATTVPLTFLFVD
 RKLQRVGI FLDMGMQNV SFFDAESGSHVYTFRSVSAEEPLRPFLAPSVP PNGDQGVLSICPLMNSGTTDA
 PVRPGEAK

TRTRPLE - GFP Tag - V

Restriction Sites: SgfI-MluI

Cloning Scheme:

Cloning sites used for ORF Shuttling:



ACCN: NM_006605

ORF Size: 864 bp

OTI Disclaimer: The molecular sequence of this clone aligns with the gene accession number as a point of reference only. However, individual transcript sequences of the same gene can differ through naturally occurring variations (e.g. polymorphisms), each with its own valid existence. This clone is substantially in agreement with the reference, but a complete review of all prevailing variants is recommended prior to use. [More info](#)

OTI Annotation: This clone was engineered to express the complete ORF with an expression tag. Expression varies depending on the nature of the gene.

Components: The ORF clone is ion-exchange column purified and shipped in a 2D barcoded Matrix tube containing 10ug of transfection-ready, dried plasmid DNA (reconstitute with 100 ul of water).

Reconstitution Method:

1. Centrifuge at 5,000xg for 5min.
2. Carefully open the tube and add 100ul of sterile water to dissolve the DNA.
3. Close the tube and incubate for 10 minutes at room temperature.
4. Briefly vortex the tube and then do a quick spin (less than 5000xg) to concentrate the liquid at the bottom.
5. Store the suspended plasmid at -20°C. The DNA is stable for at least one year from date of shipping when stored at -20°C.

Note: Plasmids are not sterile. For experiments where strict sterility is required, filtration with 0.22um filter is required.

RefSeq: [NM_006605.2](#), [NP_006596.2](#)

RefSeq Size: 1516 bp

RefSeq ORF: 954 bp

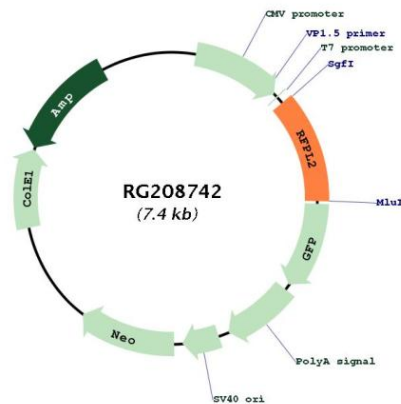
Locus ID: 10739

UniProt ID: [Q75678](#)

Cytogenetics: 22q12.3

Protein Families: Druggable Genome

Product images:



Circular map for RG208742