

Product datasheet for **RG208740**

ZNF175 (NM_007147) Human Tagged ORF Clone

Product data:

Product Type:	Expression Plasmids
Product Name:	ZNF175 (NM_007147) Human Tagged ORF Clone
Tag:	TurboGFP
Symbol:	ZNF175
Synonyms:	OTK18
Mammalian Cell Selection:	Neomycin
Vector:	pCMV6-AC-GFP (PS100010)
E. coli Selection:	Ampicillin (100 ug/mL)



[View online »](#)

ORF Nucleotide
Sequence:

>RG208740 representing NM_007147
Red=Cloning site Blue=ORF Green=Tags(s)

TTTTGTAATACGACTCACTATAGGGCGGCCGGAATTCGTCGACTGGATCCGGTACCGAGGAGATCTGCC
GCCGCGATCGCC

ATGCCTGCTGATGTGAATTTATCCAGAAGCCTCAGGTCCTGGTCCAGAGAAGCAGGATGGATCTTGCG
AGGCATCAGTGTCATTTGAGGACGTGACCGTGGACTTCAGCAGGGAGGAGTGGCAGCAACTGGACCCTGC
CCAGAGATGCCTGTACCGGGATGTGATGCTGGAGCTCTATAGCCATCTCTTCGCAGTGGGGTATCATT
CCCAACCCAGAGGTCATCTTCAGAATGCTAAAAGAAAAGGAGCCGCGTGTGGAGGAGGCTGAAGTCTCAC
ATCAGAGGTGTCAAGAAAGGGAGTTTGGGCTTGAAATCCACAAAAGGAGATTTCTAAGAAAGCTTCATT
TCAAAAGGATATGGTAGGTGAGTTCACAAGAGATGGTTCATGGTGTCCATTTTGAAGAAGTGAAGGCTG
GATGCTGACCGCACAAGAAAGATGAGCAAAATCAAATTAACCCATGAGTCACAGTGTCTTCTTCAACA
AGAAAACATTGAACACAGAAAGCAATTGTGAATATAAGGACCCTGGGAAAATGATTTCGCACGAGGCCCA
CCTTGCTTCTTACAGAAACAACCTCAGAAATGTTGCTTATTTACAGAAAGTTTGAAGCTGAACCTAGAA
GTGAACGGTCAGAATGAAAGCAATGACACAGAACAGCTTGATGACGTTGTTGGGTCTGGTCAGCTATTCA
GCCATAGCTCTTCTGATGCCTGCAGCAAGAATATTCATACAGGAGAGACATTTTGCAAAGGTAACCAAGT
TAGAAAAGTCTGTGGCCATAAACAGTCACTCAAGCAACATCAAATTCATACTCAGAAGAAACCAGATGGA
TGTTCTGAATGTGGGGGAGCTTCAACCCAGAAGTCACACCTCTTTGCCAACAGAGAATTCATAGTGTAG
GAAACCTCCATGAATGTGGCAAATGTGGAAAAGCCTTCATGCCACAATAAACTCAGTGTATATCTGAC
AGATCATACAGGTGATATACCTGTATATGCAAGGAATGTGGAAAGTCTTTATTCAGAGATCAGAATTG
CTTACGCACCAGAAAACACACTAGAAAAGAAGCCCTATAAATGCCATGACTGTGGAAAAGCCTTTTTCC
AGATGTTATCTCTCTTTCAGACATCAGAGAAGTCAAGTACAGTACAGAAAAGTCTATGAATGCAGTGAATGTGG
CAAAGGCTTCTCCAAAACCTCAACCCTCATTATACATCAGAAAATTCATACTGGTGAGAGACAGTATGCA
TGCAGTGAATGTGGAAAAGCCTTTACCCAGAAGTCAACACTCAGCTTGCACCAGAGAATCCACTCAGGGC
AGAAGTCTATGTGTGATCGAATGCGGGCAGGCCTTCATCCAGAAGGCACACCTGATTGTCATCAAAG
AAGCCACACAGGAGAAAAACCTTATCAGTGCCACAAGTGTGGAAATCCTTCATTTCCAAGTCACAGCTT
GATATACATCATCGAATTCATACAGGGGAGAAACCTTATGAATGCAGTACTGTGGAAAACCTTCAACC
AAAAGTCACACCTGAATATACACCAGAAAATTCATACTGGAGAAAAGACACCATGTATGCAGTGAATGCGG
GAAAGCCTTCAACCAGAAGTCAATACTCAGCATGCATCAGAGAATTCACACCGGAGAGAAGCCTTACAAA
TGCAGTGAATGTGGAAAAGCCTTCACTTCTAAGTCTCAATTCAAAGAGCATCAGCGAATTCACACGGGTG
AGAAACCTTATGTGTGCACTGAATGTGGGAAGGCCTTCAACGGCAGGTCAAATTTCCATAAACATCAAAT
AACTCACACTAGAGAGAGGCCTTTTGTCTGTTACAAATGTGGGAAGGCTTTTGTCCAGAAATCAGAGTTG
ATTACCCATCAAAGAAGTCAATGGGAGAGAAACCTTATGAATGCCTTGACTGTGGGAAATCGTTAGTA
AGAAACCACTCAAGGTGCATCAGCGAATTCACACGGGAGAAAAGACCTTATGTGTGTTCTGAATGTGG
AAAGGCCTTCAACAACAGGTCAAATCAATAAACACCAAACTCATAACCAGAGACAAATCTTACAAA
TGCAGTATTCTGTGAAAGGCTTTACCAAGCAA

ACGCGTACGCGGCCGCTCGAG - GFP Tag - GTTTAA

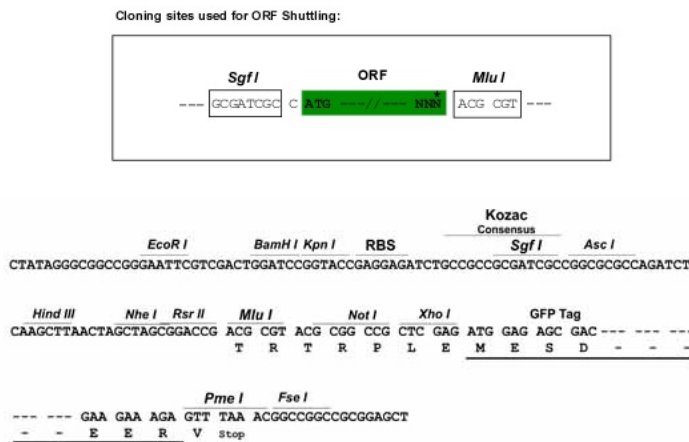
Protein Sequence: >RG208740 representing NM_007147
 Red=Cloning site Green=Tags(s)

```
MPADVNL SQKPQVL GPEKQDGSCEASVSFEDVTVD F SREEWQQLDPAQRCLYRDVMLELYSHLFAVGYHI
PNPEVIFRMLKEKEPRVEEA EVSHQRCQEREFGL EIPQKEISKKASFQKDMVGEFTRDGSWCSILEELRL
DADRTKKDEQNQIQPM SHSAFFNKKTLNTE SNCEYKDPGKMIRTRPHLASSQKQPQKCLFTE SLKLNLE
VNGQNESNDTEQLDDVVGSGQLF SHSSSDACSKNIHTGETFC KGNQCRKVC GHKQSLKQH QIHTQKKPDG
CSECGGSFTQKSHLFAQQRIH SVGNLHECGKCGKAFMPQLKLSVYLDHTGDIPCICKECGKVF IQRSEL
LTHQKTHTRKPKYKCHDCGKAFFQMLSLFRHQRT HSREKLYECSECGKGF S QNSTLI IHQKIHTGERQYA
CSECGKAFTQKSTLSLHQRIHSGQKSYVCI ECGQAFIQKAHLIVHQSHTGEKPYQCHNCGKSFISKSQL
DIHHRIHTGEKPYECSDCGKTF TQKSHLNIHQIHTGERHHVCSECGKAFNQKSILSMHQRIHTGEKPYK
CSECGKAFTSKSQFKEHQRIHTGEKPYVCT ECGKAFNGRSNFHKHQIHTHTRERPFV CYKCGKAFVQKSEL
ITHQRT HMGEKPYECLDCGKSF SKKPQLKVHQRIHTGERPYV CSECGKAFNRSNFNKHQTHTTRDKSYK
CSYSVKGFTKQ
```

TRTRPLE - GFP Tag - V

Restriction Sites: SgfI-MluI

Cloning Scheme:



ACCN: NM_007147

ORF Size: 2133 bp

OTI Disclaimer: The molecular sequence of this clone aligns with the gene accession number as a point of reference only. However, individual transcript sequences of the same gene can differ through naturally occurring variations (e.g. polymorphisms), each with its own valid existence. This clone is substantially in agreement with the reference, but a complete review of all prevailing variants is recommended prior to use. [More info](#)

OTI Annotation: This clone was engineered to express the complete ORF with an expression tag. Expression varies depending on the nature of the gene.

Components: The ORF clone is ion-exchange column purified and shipped in a 2D barcoded Matrix tube containing 10ug of transfection-ready, dried plasmid DNA (reconstitute with 100 ul of water).

Reconstitution Method:

1. Centrifuge at 5,000xg for 5min.
2. Carefully open the tube and add 100ul of sterile water to dissolve the DNA.
3. Close the tube and incubate for 10 minutes at room temperature.
4. Briefly vortex the tube and then do a quick spin (less than 5000xg) to concentrate the liquid at the bottom.
5. Store the suspended plasmid at -20°C. The DNA is stable for at least one year from date of shipping when stored at -20°C.

RefSeq: [NM_007147.4](#)

RefSeq Size: 3788 bp

RefSeq ORF: 2136 bp

Locus ID: 7728

UniProt ID: [Q9Y473](#)

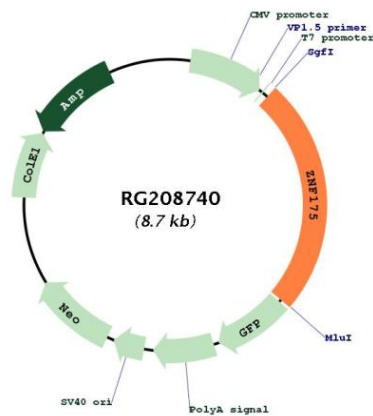
Cytogenetics: 19q13.41

Domains: KRAB, zf-C2H2

Protein Families: Transcription Factors

Gene Summary: Down-regulates the expression of several chemokine receptors. Interferes with HIV-1 replication by suppressing Tat-induced viral LTR promoter activity.[UniProtKB/Swiss-Prot Function]

Product images:



Circular map for RG208740