

Product datasheet for **RG208735**

Calcium independent Phospholipase A2 (PLA2G6) (NM_001004426) Human Tagged ORF Clone

Product data:

Product Type:	Expression Plasmids
Product Name:	Calcium independent Phospholipase A2 (PLA2G6) (NM_001004426) Human Tagged ORF Clone
Tag:	TurboGFP
Symbol:	Calcium independent Phospholipase A2
Synonyms:	Cal-PLA2; GVI; INAD1; iPLA2; IPLA2-VIA; iPLA2beta; NBIA2; NBIA2A; NBIA2B; PARK14; PLA2; PNPLA9
Mammalian Cell Selection:	Neomycin
Vector:	pCMV6-AC-GFP (PS100010)
E. coli Selection:	Ampicillin (100 ug/mL)



[View online »](#)

ORF Nucleotide Sequence:

>RG208735 representing NM_001004426
 Red=Cloning site Blue=ORF Green=Tags(s)

TTTTGTAATACGACTCACTATAGGGCGGCCGGGAATTCGTCGACTGGATCCGGTACCGAGGAGATCTGCC
 GCC**CGGATCGCC**

ATGCAGTTCTTTGGCCGCTGGTCAATACCTTCAGTGGCGTCACCAACTTGTCTCTAACCCATTCCGGG
 TGAAGGAGGTGGCTGTAGCCGACTACACCTCGAGTGACCGAGTTCGGGAGGAAGGCAGCTGATTCTGTT
 CCAGAACACTCCCAACCGCACCTGGGACTGCGTCTGGTCAACCCAGGAACTCACAGAGTGGATCCGA
 CTCTCCAGCTGGAGTTGGAGGCTGACGCCCTAGTGAATTTCCATCAGTATTCTTCCAGCTGCTACCCCT
 TCTATGAGAGCTCCCCTCAGGTCTGCACACTGAGGTCTGCAGCACCTGACCGACCTCATCCGTAACCA
 CCCAGCTGGTCACTGGCCACCTGGCTGTGGAGCTAGGGATCCGCGAGTGTTCATCACAGCCGTATC
 ATCAGCTGTGCCAATTGCGCGGAGAACGAGGAGGGCTGCACACCCTGCACCTGGCTGCCGAAGGGTG
 ATGGGGAGATCCTGGTGGAGCTGGTGCAGTACTGCCACACTCAGATGGATGTACCGACTACAAGGGAGA
 GACCGTCTCCATTATGTGTCCAGGGTACAATTCTCAGGTGCTGCAGCTCCTTGAAGGAACGCAGTG
 GCTGGCCTGAACCAAGTGAATAACCAAGGGCTGACCCCGCTGCACCTGGCTGCCAGCTGGGGAAGCAGG
 AGATGGTCCGCGTGTGTGTGCAATGCTCGGTGCAACATCATGGGCCCCAACCGCTACCCCATCCA
 CTCGGCCATGAAGTTCTCTCAGAAGGGGTGTGCGGAGATGATCATCAGCATGGACAGCAGCCAGATCCAC
 AGCAAAGACCCCGTTACGGAGCCAGCCCCCTCCACTGGGCCAAGAACGCAGAGATGGCCCGCATGCTGC
 TGAAACGGGGCTGCAACGTGAACAGCACCAGCTCCGCGGGGAACACGGCCCTGCACGTGGCGGTGATGCG
 CAACCGTTCGACTGTGCCATAGTGTGCTGACCCACGGGGCCACCGCGGATGCCCGGGAGAGCACGGC
 AACACCCCGCTGCACCTGGCCATGTGAAAGACAACGTGGAGATGATCAAGGCCCTCATCGTGTTCGGAG
 CAGAAGTGGACACCCCGAATGACTTTGGGGAGACTCCTACATTCCTAGCCTCCAAAATCGGCAGACAACT
 ACAGGATCTCATGCATCTCACGGGCCGGGAAGCCAGCGTTTCCTGGGCTCCATGAGGGACGAGAAG
 CGGACCCACGACCACCTGCTGTGCTGGATGGAGGAGGAGTAAAAGCCTCATCATCAGCTCCTCA
 TCGCCATCGAGAAGCCTCGGGTGTGGCCACCAAGGACCTGTTTGACTGGGTGGCGGGCACCAGCACTGG
 AGGCATCCTGGCCCTGGCCATTCTGCACAGTAAGTCCATGGCCTACATGCGCGGCATGTACTTTCGCATG
 AAGGATGAGGTGTTCCGGGGCTCCAGGCCCTACGAGTCCGGGGCCCTGGAGGAGTTCCTGAAGCGGGAGT
 TTGGGGAGCACACCAAGATGACGGACGTCAGGAAACCAAGGTGATGCTGACAGGGACACTGTCTGACCG
 GCAGCCGGCTGAACCTCACCTCTCCGGAACACGATGCTCCAGAACTGTCCGGGAGCCTCGTTTCAAC
 CAGAACGTTAACCTCAGGCCTCCAGCTCAGCCCTCAGACCAGCTGGTGTGGCGGGCGGCCGAAGCAGCG
 GGGCAGCTCCTACTTACTTCCGACCCAATGGGCGCTTCTTGACGGTGGGCTGCTGGCCAACAACCCAC
 GCTGGATGCCATGACCGAGATCCATGAGTACAATCAGGACCTGATCCGCAAGGGTCAGGCCAACAAGGTG
 AAGAACTCTCCATCGTTGTCTCCCTGGGGACAGGGAGGTCCCCACAAGTGCCTGTGACCTGTGTGGATG
 TCTTCCGTCCCAGCAACCCCTGGGAGCTGGCCAAGACTGTTTTTGGGGCCAAGGAACTGGGCAAGATGGT
 GGTGGACTGTTGCACGGATCCAGACGGGCGGGCTGTGGACCGGGCACGGGCTGGTGCAGATGGTCGGC
 ATCCAGTACTTCAGATTGAACCCCAAGCTGGGGACGGACATCATGCTGGATGAGGTGAGTGACACAGTGC
 TGGTCAACGCCCTCTGGGAGACCGAGGTCTACATCTATGACACCGCGAGGAGTTCAGAAGCTCATCCA
 GCTGCTGCTCTCACC

ACGCGTACGCGGCCGCTCGAG - GFP Tag - GTTTAA

Protein Sequence: >RG208735 representing NM_001004426
Red=Cloning site Green=Tags(s)

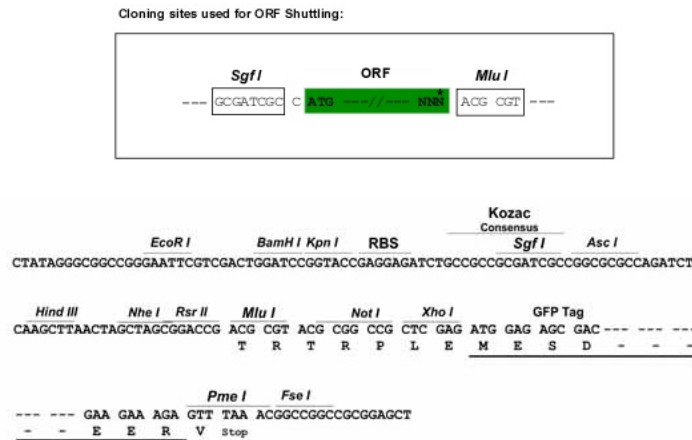
```

MQFFGRLVNTFSGVTNLFNPFVRVKEVAVADYTSDDRVREEGQLILFQNTPNRTWDCVLVNPNSQSGRF
LFQLELEADALVNFHQYSSQLLPFYESSPQVLHTEVLQHLTDLIRNHPWSVAHLAVELGIRECFHHSRI
ISCANCAENEEGCTPLHLACRKGDGEILVELVQYCHTQMDVTDYKGETVFHYAVQGDNSQVLQLLGRNAV
AGLNQVNNQGLTPLHLACQLGKQEMVRVLLL CNARCNI MGPNGYPIHSAMKF S QKGAEMI I SMDSSQIH
SKDPRYGASPLHWAKNAEMARMLLKRGCVNSTSSAGNTALHVAVMRNRFDCAI VLLTHGANADARGEHG
NTPLHLAMSKDNVEMIKALIVFGAEVDPDFGETPTFLASKIGRQLQDLMHISRARKPAFILGSMRDEK
RTHDHLLCLDGGGVKGLIIIQLLIAIEKASGVATKDLFDWVAGTSTGGILALAILHKSMA YMRGM YFRM
KDEVFGRSRPYESGPLEEFLKREFGEHTKMTDVRKPKVMLTGTLSDRQPAELHLFRNYDAPETVREPRFN
QNVNLRPPAQPSDQLVWRAARSSGAAPTYFRPNGRFLDGGLLANNPTLDAMTEIHEYNQDLIRKQQANKV
KKLSIVVSLGTGRSPQVPVTCVDVFRPSNPWELAKTVFGAKELGKMVVCCTDPDGRAVDRARAWCEMVG
IQYFRLNPQLGTDIMLDEVSDTVLVNALWETEVIYEHREEFQKLIQ LLLSP
    
```

TRTRPLE - GFP Tag - V

Restriction Sites: SgfI-MluI

Cloning Scheme:



ACCN: NM_001004426

ORF Size: 2256 bp

OTI Disclaimer: The molecular sequence of this clone aligns with the gene accession number as a point of reference only. However, individual transcript sequences of the same gene can differ through naturally occurring variations (e.g. polymorphisms), each with its own valid existence. This clone is substantially in agreement with the reference, but a complete review of all prevailing variants is recommended prior to use. [More info](#)

OTI Annotation: This clone was engineered to express the complete ORF with an expression tag. Expression varies depending on the nature of the gene.

Components: The ORF clone is ion-exchange column purified and shipped in a 2D barcoded Matrix tube containing 10ug of transfection-ready, dried plasmid DNA (reconstitute with 100 ul of water).

Reconstitution Method:

1. Centrifuge at 5,000xg for 5min.
2. Carefully open the tube and add 100ul of sterile water to dissolve the DNA.
3. Close the tube and incubate for 10 minutes at room temperature.
4. Briefly vortex the tube and then do a quick spin (less than 5000xg) to concentrate the liquid at the bottom.
5. Store the suspended plasmid at -20°C. The DNA is stable for at least one year from date of shipping when stored at -20°C.

RefSeq: [NM_001004426.1](#), [NP_001004426.1](#)

RefSeq Size: 3077 bp

RefSeq ORF: 2259 bp

Locus ID: 8398

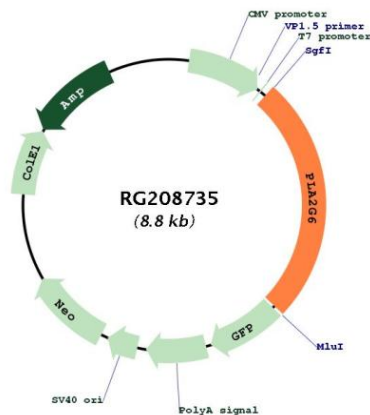
UniProt ID: [O60733](#)

Cytogenetics: 22q13.1

Protein Pathways: alpha-Linolenic acid metabolism, Arachidonic acid metabolism, Ether lipid metabolism, Fc epsilon RI signaling pathway, Fc gamma R-mediated phagocytosis, Glycerophospholipid metabolism, GnRH signaling pathway, Linoleic acid metabolism, Long-term depression, MAPK signaling pathway, Metabolic pathways, Vascular smooth muscle contraction, VEGF signaling pathway

Gene Summary: The protein encoded by this gene is an A2 phospholipase, a class of enzyme that catalyzes the release of fatty acids from phospholipids. The encoded protein may play a role in phospholipid remodelling, arachidonic acid release, leukotriene and prostaglandin synthesis, fas-mediated apoptosis, and transmembrane ion flux in glucose-stimulated B-cells. Several transcript variants encoding multiple isoforms have been described, but the full-length nature of only three of them have been determined to date. [provided by RefSeq, Dec 2010]

Product images:



Circular map for RG208735