

Product datasheet for **RG208733**

ZNF224 (NM_013398) Human Tagged ORF Clone

Product data:

Product Type:	Expression Plasmids
Product Name:	ZNF224 (NM_013398) Human Tagged ORF Clone
Tag:	TurboGFP
Symbol:	ZNF224
Synonyms:	BMZF-2; BMZF2; KOX22; ZNF27; ZNF233; ZNF255
Mammalian Cell Selection:	Neomycin
Vector:	pCMV6-AC-GFP (PS100010)
E. coli Selection:	Ampicillin (100 ug/mL)



[View online »](#)

ORF Nucleotide
Sequence:

>RG208733 ORF sequence, codon optimized.
Due to the complexity of NM_013398, the ORF clone is codon optimized for mammalian Expression.
The nucleotide sequence differs from the reference sequence, yet the amino acid sequence remains identical.

Red=Cloning site Blue=ORF Green=Tags(s)

TTTTGTAATACGACTCACTATAGGGCGCCGGGAATTCGTGCGACTGGATCCGGTACCGAGGAGATCTGCC
GCCGCGATCGCC

ATGACCACTTTAAAGGAGGCGATGACATTTAAAGACGTCGCTGTGGTTTTTACGGAGGAGGAGCTGGGTC
TGCTCGATCTCGCCAGAGGAAATTGTATCGGGATGTGATGTTGGAGAACTTTAGAAATCTGCTGAGTGT
CGGGCATCAGGCATTTACCGCGACACCTTCCACTTCTGAGAGAAGAAAAGATATGGATGATGAAAACG
GCCATCCAGCGGGAGGGTAACAGCGGGGACAAAATTCAGACAGAAATGGAACCGTTAGCGAGGCCGGCA
CACACCAGGAGTGGTCTTCCAACAAAATTTGGGAAAAGATCGCTTCCGATCTTACTCGCTCTCAGGATTT
GATGATTAATAGCTCCCAGTTCAGTAAAGAGGGTGACTTTCCTTGCCAAACTGAGGCCGGCCTCTCAGTC
ATCCACACGCGGCAGAAGAGCAGCCAGGGTAATGGCTATAAGCCAGCTTTAGCGACGTGAGCCATTTTCG
ACTTTCACCAACAGCTGCACTCAGGAGAAAAGAGCCACACCTGCGATGAATGCGGTAAAGAAATTTTGCTA
CATCTCAGCCTTGAGGATTCATCAGCGAGTGCACATGGGCGAGAAGTGTATAAATGCGCAGTGTGCGGA
AAGGAGTTCAGTCAAAGTAGCCACTGCAGACCATCAACGGGTACACACCGGCGAGAAGCCTTTCAAAT
GCGTGGAAATGTGAAAGGGCTTTAGTCGACGGTTCAGCTCTTAATGTCCACCACAAGCTCCATACCGGGGA
GAAGCCCTATAAATGTGAGGAGTGTGGCAAGGCTTCATCCACGATTTCCAACTGCAAGAGCATCGCGC
ATCCACACAGGTGAAAAGCCTTTCAAATGCGACATTTGTGGGAAGAGTTTCTGTGGCCGCTCACGGCTTA
ATCGCCACAGCATGGTACATACCGCCGAGAAGCCCTTCCGGTGCACACCTGCGATAAGTCTTTTCGACA
GCGGAGCGCTCTGAACTCCACAGGATGATCCACACCGGAGAGAAGCCATACAAGTGTGAAGAGTGTGGC
AAGGGGTTCAATTTGCCGGCGGGACCTGTATACTCACCATATGGTGCACACCGGCGAGAAGCCTTATAACT
GTAAAGAGTGGGTAAGTCTTCCAGTGGGCTCCTGCCTGCTGAAGCACCAGAGGGTCCATTCTGGAGA
GAAACCTTTCAAGTGGGAGGAATGCGGCAAGGATTTTACACAAACAGTCAGTGTACAGCCACCAGAGA
AGCCACAGTGGAGAGAAACCTACAAGTGGTGAATGCGGCAAGGGTTATAAGCGGAGGCTCGATCTCG
ATTTCCACCAGCGCTGCACACCGGAGAAAAGCTGTATAATTGTAAGAAATGTGGTAAATCATTTAGCAG
AGCTCCATGCCTGCTTAAACATGAGCGACTTCACTCAGGCGAAAAGCCCTTCCAGTGTGAAGAATGCGGG
AAACGGTTCACCCAGAATCTCACTTGCATTCACACCAAAGGGTACACACCGGAGAGAAACCTTACAAGT
GTGAGAAATGCGGTAAGGGGTACAACAGCAAATTTAATCTCGATATGCACCAAAGGTGCATACAGGTGA
GCGACCGTATAATTGCAAGGAGTGCAGGAAATCTTTGGATGGGCTCCTGCCTCCTGAAGCACCAGAGG
CTTCACTCCGGCGAGAAGCCCTTCAAGTGCAGGAGTGCAGGAAAAGATTACCCAGAATCTCAGCTGC
ACAGTCACCAGCGAGTCCATACTGGAGAGAAGCCATATAAGTGTGACGAATGCGGAAAGGGATTCTCATG
GTCCTCTACTCGCTCACTCATCAACGGCGCCATTCTCGGAGACACCCCTCAAATGTGAGCAGCATGGC
AAGAACATCGTCCAAAATTCCTTCAGTAAGGTGCAGGAAAAGGTGCACAGCGTTGAGAAGCCCTATAAAT
GTGAAGATTGCGGCAAGGGCTACAATAGACGCTTGAACCTCGACATGCATCAGAGAGTTCACATGGGCGA
GAAAACCTGGAAGTGCCGGGAATGTGACATGTGCTTTTCCAAGCAAGCAGTCTGCGACTGCACCAGAAC
GTCCACGTAGGCGAGAAACCA

ACCGGTACGCGGCCGCTCGAG - GFP Tag - GTTTAA

Protein Sequence: >RG208733 representing NM_013398
Red=Cloning site Green=Tags(s)

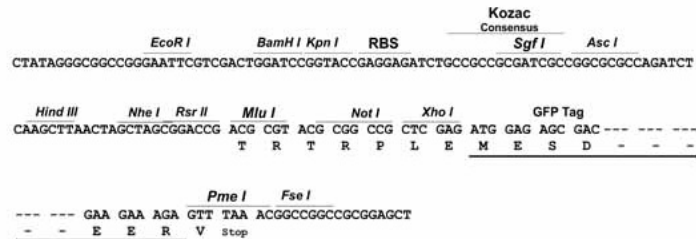
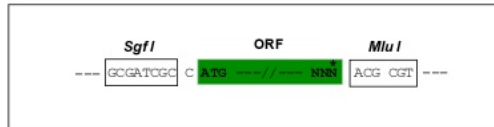
MTTFKEAMTFKDVAVVFTEELGLLDLAQRKLYRDVMLENFRNLLSVGHQAFHRDTFHFLREEKIWMKTAIQREGNSGDKIQTEMETVSEAGTHQEWFSQQIWEKIASDLTRSQDLMINSSQFSKEGDFPCQTEAGLSV
IHTRQKSSQGNKYKPSFSDVSHFDHQQQLHSGEKSHTCDECGKNFCYISALRIHQVRVMGEKCYKCDVCG
KEFSQSSHLQTHQVRVHTGEKPFKCVCECGKGFRRSALNVHKKLHTGEKPYNCEECGKAFIHDSQLQEHQR
IHTGEKPFKCDICGKSFGRSRLNRHSMVHTAEKPFRCDTCDKSFQRQSRALNSHRMIHTGEKPYKCEECG
KGFICRRDLYTHMVHTGEKPYNCKEKGKSFWRASCLLKHQRVHSGEKPFKCEECGKGFYTNQCYSYHQR
SHSGEKPYKCVCECGKGYKRRDLDFHQRVHTGEKLYNCKEKGKSF SRAPCLLKHERLHSGEKPFQCEECG
KRFTQNSHLHSHQRVHTGEKPYKCEKCGKGYNSKFNLDMHQKVHTGERPYNCKEKGKSGWASCLLKHQR
LHSGEKPFKCEECGKRFTQNSQLHSHQRVHTGEKPYKCECGKGF SWSSTRLTHQRRHSRETPLKCEQHG
KNIVQNSFSKVQEKVHSEKPYKCEDCGKGYNRRNLNLMHQVRVMGEKTKCRECDMCF SQASSLRLHQN
VHVGEKP

TRTRPLE - GFP Tag - V

Restriction Sites: SgfI-MluI

Cloning Scheme:

Cloning sites used for ORF Shutting:



- ACCN:** NM_013398
- ORF Size:** 2121 bp
- OTI Disclaimer:** The molecular sequence of this clone aligns with the gene accession number as a point of reference only. However, individual transcript sequences of the same gene can differ through naturally occurring variations (e.g. polymorphisms), each with its own valid existence. This clone is substantially in agreement with the reference, but a complete review of all prevailing variants is recommended prior to use. [More info](#)
- OTI Annotation:** This clone was engineered to express the complete ORF with an expression tag. Expression varies depending on the nature of the gene.
- Components:** The ORF clone is ion-exchange column purified and shipped in a 2D barcoded Matrix tube containing 10ug of transfection-ready, dried plasmid DNA (reconstitute with 100 ul of water).

Reconstitution Method:

1. Centrifuge at 5,000xg for 5min.
2. Carefully open the tube and add 100ul of sterile water to dissolve the DNA.
3. Close the tube and incubate for 10 minutes at room temperature.
4. Briefly vortex the tube and then do a quick spin (less than 5000xg) to concentrate the liquid at the bottom.
5. Store the suspended plasmid at -20°C. The DNA is stable for at least one year from date of shipping when stored at -20°C.

RefSeq: [NM_013398.2](#), [NP_037530.2](#)

RefSeq Size: 3993 bp

RefSeq ORF: 2124 bp

Locus ID: 7767

UniProt ID: [Q9NZL3](#)

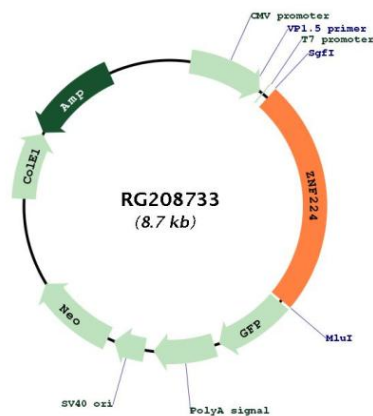
Cytogenetics: 19q13.31

Domains: KRAB, zf-C2H2

Protein Families: Transcription Factors

Gene Summary: This gene encodes a member of the Krueppel C2H2-type zinc-finger family of proteins. The encoded protein represses transcription of the aldolase A gene, which encodes a key enzyme in glycolysis. The encoded zinc-finger protein may also function as a transcriptional co-activator with Wilms' tumor protein 1 to regulate apoptotic genes in leukemia. [provided by RefSeq, Jul 2016]

Product images:



Circular map for RG208733