

Product datasheet for **RG208732**

C20orf103 (LAMP5) (NM_012261) Human Tagged ORF Clone

Product data:

Product Type:	Expression Plasmids
Product Name:	C20orf103 (LAMP5) (NM_012261) Human Tagged ORF Clone
Tag:	TurboGFP
Symbol:	C20orf103
Synonyms:	BAD-LAMP; BADLAMP; C20orf103; LAMP-5; UNC-46
Mammalian Cell Selection:	Neomycin
Vector:	pCMV6-AC-GFP (PS100010)
E. coli Selection:	Ampicillin (100 ug/mL)
ORF Nucleotide Sequence:	>RG208732 representing NM_012261 Red=Cloning site Blue=ORF Green=Tags(s)

TTTTGTAATACGACTCACTATAGGGCGGCCGGAATTCGTCGACTGGATCCGGTACCGAGGAGATCTGCC
GCC**CGATCGCC**

ATGGATCTCCAAGGAAGAGGGGTCCCCAGCATCGACAGACTTCGAGTTCTCCTGATGTTGTTCCATACAA
TGGCTCAAATCATGGCAGAACAAGAAGTGGAAAATCTCTCAGGCCTTCCACTAACCCCTGAAAAAGATAT
ATTTGTGGTGGCGGAAAATGGGACGACGTGTCTCATGGCAGAGTTTGAGCCAAATTTATTGTACCTTAT
GATGTGTGGGCCAGCAACTACGTAGATCTGATCACAGAACAGGCCGATATCGCATTGACCCGGGAGCTG
AGGTGAAGGGCCGCTGTGGCCACAGCCAGTCGGAGCTGCAAGTGTCTGGGTGGATCGCGCATATGCACT
CAAAATGCTCTTTGTAAGGAAAAGCCACAACATGTCCAAGGGACCTGAGGCGACTTGGAGGCTGAGCAAA
GTGCAGTTTGTCTACGACTCCTCGGAGAAAACCCACTTCAAAGACGCAGTCAGTGTGGGAGCAGACAG
CCAACCTCGCACCCTCTCTGCCTTGGTCACCCCGCTGGGAAGTCTATGAGTGTCAAGCTCAACAAAAC
CATTTCACTGGCCTCTAGTGATCCGAGAACAGCGTCACCATGATCCTGTCTGCGGTCCACATCCAACCT
TTTGACATTATCTCAGATTTTGTCTTTCAGTGAAGAGCATAAATGCCAGTGGATGAGCGGGAGCAACTGG
AAGAAACCTTGCCCTGATTTTGGGGCTCATCTGGGCCTCGTCATCATGGTAACACTCGCGATTTACCA
CGTCCACCACAAAATGACTGCCAACAGGTGCAGATCCCTCGGGACAGATCCCAGTATAAGCACATGGGC

ACGCGTACGCGGCCGCTCGAG - GFP Tag - GTTTAA



[View online »](#)

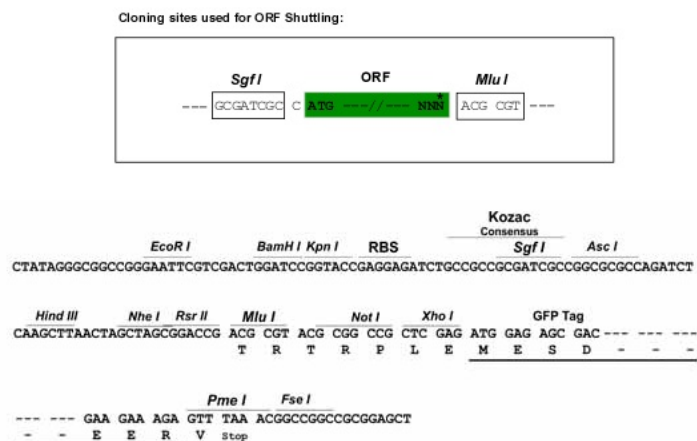
Protein Sequence: >RG208732 representing NM_012261
 Red=Cloning site Green=Tags(s)

MDLQGRGVPSIDRLRVLLMLFHTMAQIMAEQEVENLSGLSTNPEKDI FVVRENGTTCLMAEFAAKFIVPY
 DVWASNVDLITEQADIALTRGAEVKGRCGHSQSELQVFWVDRAVALKMLFVKESHNMKSGPEATWRLSK
 VQFVYDSSEKTHFKDAVSAGKHTANSHHLSALVTPAGKSYECQAQQTISLASSDPQKTVTMILSAVHIQP
 FDIISDFVFSEEHKCPVDEREQLEETLPLILGLILGLVIMVTLAIYHVHMKMTANQVQIPRDRSQYKHMG

TRTRPLE - GFP Tag - V

Restriction Sites: SgfI-MluI

Cloning Scheme:



ACCN: NM_012261

ORF Size: 840 bp

OTI Disclaimer: The molecular sequence of this clone aligns with the gene accession number as a point of reference only. However, individual transcript sequences of the same gene can differ through naturally occurring variations (e.g. polymorphisms), each with its own valid existence. This clone is substantially in agreement with the reference, but a complete review of all prevailing variants is recommended prior to use. [More info](#)

OTI Annotation: This clone was engineered to express the complete ORF with an expression tag. Expression varies depending on the nature of the gene.

Components: The ORF clone is ion-exchange column purified and shipped in a 2D barcoded Matrix tube containing 10ug of transfection-ready, dried plasmid DNA (reconstitute with 100 ul of water).

Reconstitution Method:

1. Centrifuge at 5,000xg for 5min.
2. Carefully open the tube and add 100ul of sterile water to dissolve the DNA.
3. Close the tube and incubate for 10 minutes at room temperature.
4. Briefly vortex the tube and then do a quick spin (less than 5000xg) to concentrate the liquid at the bottom.
5. Store the suspended plasmid at -20°C. The DNA is stable for at least one year from date of shipping when stored at -20°C.

RefSeq: [NM_012261.4](#)

RefSeq Size: 1793 bp

RefSeq ORF: 843 bp

Locus ID: 24141

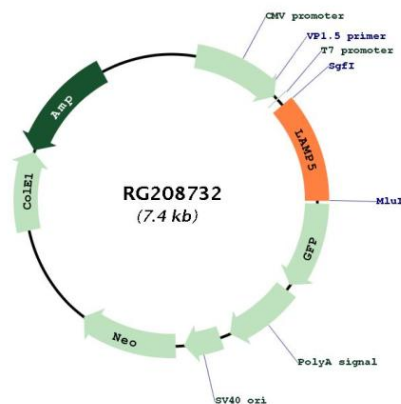
UniProt ID: [Q9UJQ1](#)

Cytogenetics: 20p12.2

Protein Families: Transmembrane

Gene Summary: Plays a role in short-term synaptic plasticity in a subset of GABAergic neurons in the brain. [UniProtKB/Swiss-Prot Function]

Product images:



Circular map for RG208732