

Product datasheet for **RG208726**

VPS28 (NM_183057) Human Tagged ORF Clone

Product data:

Product Type: Expression Plasmids
Product Name: VPS28 (NM_183057) Human Tagged ORF Clone
Tag: TurboGFP
Symbol: VPS28
Mammalian Cell Selection: Neomycin
Vector: pCMV6-AC-GFP (PS100010)
E. coli Selection: Ampicillin (100 ug/mL)
ORF Nucleotide Sequence: >RG208726 representing NM_183057
 Red=Cloning site Blue=ORF Green=Tags(s)

TTTTGTAATACGACTCACTATAGGGCGGCCGGAATTCGTCGACTGGATCCGGTACCGAGGAGATCTGCC
 GCC**CGATCGCC**

ATGTTTCATGGGATCCCAGCCACGCCGGGCATAGGAGCCCTGGGAACAAGCCGGAGCTGTATGAGGAAG
 TGAAGTTGTACAAGAACGCCCGGAGAGGGAGAAGTACGACAACATGGCAGAGCTGTTTGGCGGTGGTGAA
 GACAATGCAAGCCCTGGAGAAGGCCTACATCAAGGACTGTGTCTCCCCAGCGAGTACACTGCAGCCTGC
 TCCCGGCTCCTGGTCCAATACAAAGCTGCCTCAGGCAGGTCCAGGGCTCAGAAATCAGTCTATTGACG
 AATTCTGCCGCAAGTTCGCGCTGGACTGCCCGTGGCCATGGAGCGGATCAAGGAGGACCCGCCATCAC
 CATCAAGGACGACAAGGGCAACCTCAACCGCTGCATCGCAGACGTGGTCTCGCTCTTCATCACGGTCATG
 GACAAGCTGCGCCTGGAGATCCGCGCCATGGATGAGATCCAGCCCGACCTGCGAGAGCTGATGGAGACCA
 TGCACCGCATGAGCCACCTCCCACCCGACTTTGAGGGCCGCCAGACGGTCAGCCAGTGGTGGGTGCCCT
 CCCAGCCAGGCAGAGCCCGCAGTGCCCGAGACCCTCCCAGCCAGGCGGAGCCCGCAGTGCCCTGAGG
 CCCTCAGCCCCACATGCCCTGTGCTGCACTCCCAGGCTGCAGACCCTGAGCGGCATGTCGGCGTCAGA

ACGCGTACGCGGCCGCTCGAG - GFP Tag - GTTTAA

Protein Sequence: >RG208726 representing NM_183057
 Red=Cloning site Green=Tags(s)

MFHGIPATPGIGAPGNKPELYEEVKLYKNAREREKYDNMAELFAVVKTMQALEKAYIKDCVSPSEYTAAC
 SRLLVQYKAAFRVQVQSEISSIDEFCRKFRLDCPLAMERIKEDRPITIKDDKGNLNRCIADVVSLEITVM
 DKLRLEIRAMDEIQPDLRELMETMHRMSHLPDFEGRQTVSQWVSLPARQSPAVPETLPARRSPAVPLR
 PSAPTCPVLHSQAADPERHVGVR

TRTRPLE - GFP Tag - V

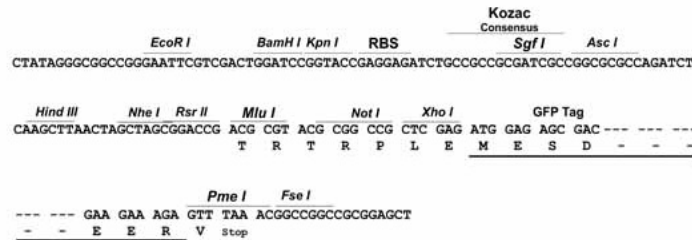
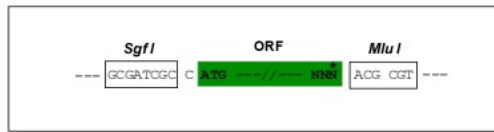


[View online »](#)

Restriction Sites: SgfI-MluI

Cloning Scheme:

Cloning sites used for ORF Shutting:



ACCN: NM_183057

ORF Size: 699 bp

OTI Disclaimer: The molecular sequence of this clone aligns with the gene accession number as a point of reference only. However, individual transcript sequences of the same gene can differ through naturally occurring variations (e.g. polymorphisms), each with its own valid existence. This clone is substantially in agreement with the reference, but a complete review of all prevailing variants is recommended prior to use. [More info](#)

OTI Annotation: This clone was engineered to express the complete ORF with an expression tag. Expression varies depending on the nature of the gene.

Components: The ORF clone is ion-exchange column purified and shipped in a 2D barcoded Matrix tube containing 10ug of transfection-ready, dried plasmid DNA (reconstitute with 100 ul of water).

Reconstitution Method:

1. Centrifuge at 5,000xg for 5min.
2. Carefully open the tube and add 100ul of sterile water to dissolve the DNA.
3. Close the tube and incubate for 10 minutes at room temperature.
4. Briefly vortex the tube and then do a quick spin (less than 5000xg) to concentrate the liquid at the bottom.
5. Store the suspended plasmid at -20°C. The DNA is stable for at least one year from date of shipping when stored at -20°C.

RefSeq: [NM_183057.1](#), [NP_898880.1](#)

RefSeq Size: 1160 bp

RefSeq ORF: 702 bp

Locus ID: 51160

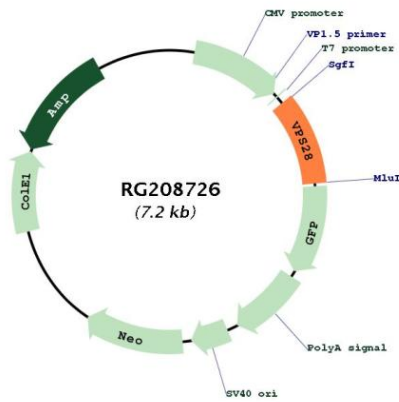
UniProt ID: [Q9UK41](#)

Cytogenetics: 8q24.3

Protein Pathways: Endocytosis

Gene Summary: This gene encodes a protein subunit of the ESCRT-I complex (endosomal complexes required for transport), which functions in the transport and sorting of proteins into subcellular vesicles. This complex can also be hijacked to facilitate the budding of enveloped viruses from the cell membrane. Alternative splicing results in multiple transcript variants encoding different isoforms. [provided by RefSeq, Jul 2013]

Product images:



Circular map for RG208726