

## Product datasheet for **RG208724**

### CDK5RAP1 (NM\_016082) Human Tagged ORF Clone

#### Product data:

Product Type:	Expression Plasmids
Product Name:	CDK5RAP1 (NM_016082) Human Tagged ORF Clone
Tag:	TurboGFP
Symbol:	CDK5RAP1
Synonyms:	C20orf34; C42; CGI-05; HSPC167
Mammalian Cell Selection:	Neomycin
Vector:	pCMV6-AC-GFP (PS100010)
E. coli Selection:	Ampicillin (100 ug/mL)



[View online »](#)

**ORF Nucleotide Sequence:**

>RG208724 representing NM\_016082  
 Red=Cloning site Blue=ORF Green=Tags(s)

TTTTGTAATACGACTCACTATAGGGCGGCCGGAATTCGTCGACTGGATCCGGTACCGAGGAGATCTGCC  
 GCCCGCATCGCC

ATGCACCCTTTACAGTGTCTCCAAGTGCAGAGGTCTCTGGGTGGGACCATTGGCCTCTGTGTCTT  
 GGCTGTCGCTGAGGATGTGCAGGCACACAGCAGTCTCTAGTACCATGTGTCCAGTCCAGAGAGGCA  
 GGAGGATGGAGCTCGGAAGGATTTACAGTCCAGGCTGGCTGCTGGACCGACTTTTCAACATTTTTAAAA  
 AGTGCCTCAGCTCCTCAGGAGAAGCTGTCTTCAAGTGAAGACCCACCTCCCTATCTCATGATGGATG  
 AACTTCTTGAAGGCAGAGAAAAGTCTACCTCGAGACCTATGGCTGCCAGATGAATGTGAATGACACAGA  
 GATAGCCTGGTCCATCTTACAGAAGAGTGGCTACCTGCGGACCAGTAACCTCCAAGAGGCAGATGTGATT  
 CTCCTTGTACGTGCTCTATCAGGGAGAAGGCTGAGCAGACCCTGGAACCGTTTACATCAGCTTAAAG  
 CCTTGAAGACAAGGCGGCCCGCTCCCGGGTTCCTCTGAGGATTGGAATTTAGGCTGCATGGCTGAGAG  
 GTTGAAGGAGGAGATTCTCAACAGAGAGAAAATGGTAGATATTTGGCTGGTCTGATGCCTACCGGGAC  
 CTTCCCGGCTGCTGGCTGTTGCTGAGTCGGGCCAGCAAGCTGCCAACGTGCTGCTCTCTGGACGAGA  
 CCTATGCTGATGTCATGCCAGTCCAGACAAGCGCCAGTGCACGTCTGCCTTTGTGTCAATCATGCGAGG  
 CTGTGACAACATGTGTAGCTACTGCATTGTTCTTTACCCGGGGCAGGGAGAGGAGTCCGCCTATTGCC  
 TCCATTCTAGAGGAAGTGAAGAAGCTTTCTGAGCAGGGGCTGAAAGAAGTGCACCTCTTGGTCAGAATG  
 TTAATAGTTTTCCGGACAATTCGGAGGTCCAGTCAACAGTGCAGTGCCTACCAATCTCAGTCGTGGCTT  
 TACCACCAACTATAAAACCAAGCAAGGAGGACTCGTTTTGCTCATCTTCTGGATCAGGTCTCCAGAGTA  
 GATCCTGAAATGAGGATCCGTTTTACCTCTCCCAACCAAGGATTTCTGATGAGGTTCTGCAGCTGA  
 TTCATGAGAGAGATAACATCTGTAACAGATCCACCTGCCAGCCAGAGTGAAGCAGCCGTGTGTTGGA  
 GGCCATGCGGAGGGGATATTCAAGAGAAGCTTATGTGGAGTTAGTTCACCATATTAGAGAATCTATTCCA  
 GGTGTGAGCCTCAGCAGCGATTTTATTGCTGGCTTTTGTGGTGAAGCAGGGAAGATCACGTCCAGACAG  
 TCTCTTTGCTCCGGGAAGTTCAGTACAACATGGGCTTCTCTTTGCCTACAGCATGAGACAGAAGACAG  
 GGCATATCATAGGCTGAAGGATGATGTCCCGGAAGAGGTAATAAGGCGTTTGGAGGAAGTCACTACT  
 ATCTTCCGAGAAGAAGCAACAAAAGCCAACTCAGACCTCTGTGGGCTGTACCCAGTTGGTGTAGTGAAG  
 GGCTCAGTAAACGCTCTGCCACTGACCTGTGTGGCAGGAATGATGAAACCTTAAGGTGATCTTCCCTGA  
 TGCAGAGATGGAGGATGTCAATAACCTGGGCTCAGGGTCAAGGCCAGCCTGGGACTATGTGCTGGT  
 AAGATCACCTCAGCCAGTCTCAGACACTTAGGGACATGTTCTCTGCAGGACCCTCTGAGGGACTCTT  
 CTGCATATTGC

ACGCGTACGCGGCCGCTCGAG - GFP Tag - GTTTAA

**Protein Sequence:**

>RG208724 representing NM\_016082  
 Red=Cloning site Green=Tags(s)

MHPLQCVLQVQRSLGWGPLASVSWLSLRMCRAHSSLSTMCPSPERQEDGARKDFSSRLAAGPTFQHFLK  
 SASAPQEKLSSVEDPPPYLMMDELLGRQRKVYLETYGCQMNVDTEIAWSILQKSGYLRTSNLQEADVI  
 LLVTCISIREKAEQTIWNRLHQLKALKTRRPRSRVPLRIGILGMAERLKEEILNREKMDILAGPDAYRD  
 LPRLLAVAESGQQAANVLLSLDETYADVMPVQTSASATSAFVSIMRGCNDMCSYCIVPFTRGRERSRPIA  
 SILEEVKKLSEQGLKEVTLGQNVNSFRDNSEVQFN SAVPTNLSRGFTTNYKTKQGLRF AHLLDQVSRV  
 DPEMRIRFTSPHPKDFPDEVLQLIHERDNICKQIHLPAQSGSSRVLEAMRRGYSREAYVELVHHIRESIP  
 GVSLSSDFIAGFCGETEEDHVQTVSLLREVQYNMGFLFAYSMRQKTRAYHRLKDDVPEEVKLRRLLEELIT  
 IFREEATKANQTSVGCTQLVLEGLSKRSATDLGCRNDGNLKVIFPDAEMEDVNNPGLRVRAQPGDYVVL  
 KITSASSQTLRGHVL CRTTLRDSAYC

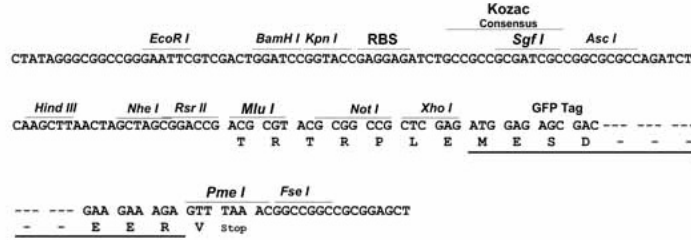
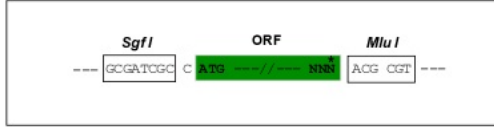
TRTRPLE - GFP Tag - V

**Restriction Sites:**

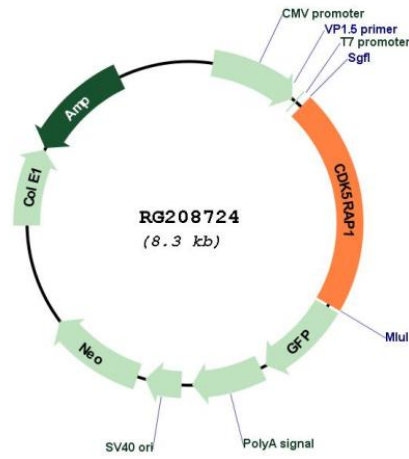
Sgfl-MluI

Cloning Scheme:

Cloning sites used for ORF Shutting:



Plasmid Map:



ACCN: NM\_016082  
 ORF Size: 1761 bp

<b>OTI Disclaimer:</b>	The molecular sequence of this clone aligns with the gene accession number as a point of reference only. However, individual transcript sequences of the same gene can differ through naturally occurring variations (e.g. polymorphisms), each with its own valid existence. This clone is substantially in agreement with the reference, but a complete review of all prevailing variants is recommended prior to use. <a href="#">More info</a>
<b>OTI Annotation:</b>	This clone was engineered to express the complete ORF with an expression tag. Expression varies depending on the nature of the gene.
<b>Components:</b>	The ORF clone is ion-exchange column purified and shipped in a 2D barcoded Matrix tube containing 10ug of transfection-ready, dried plasmid DNA (reconstitute with 100 ul of water).
<b>Reconstitution Method:</b>	<ol style="list-style-type: none"><li>1. Centrifuge at 5,000xg for 5min.</li><li>2. Carefully open the tube and add 100ul of sterile water to dissolve the DNA.</li><li>3. Close the tube and incubate for 10 minutes at room temperature.</li><li>4. Briefly vortex the tube and then do a quick spin (less than 5000xg) to concentrate the liquid at the bottom.</li><li>5. Store the suspended plasmid at -20°C. The DNA is stable for at least one year from date of shipping when stored at -20°C.</li></ol>
<b>RefSeq:</b>	<a href="#">NM_016082.3</a> , <a href="#">NP_057166.3</a>
<b>RefSeq Size:</b>	1944 bp
<b>RefSeq ORF:</b>	1767 bp
<b>Locus ID:</b>	51654
<b>UniProt ID:</b>	<a href="#">Q96SZ6</a>
<b>Cytogenetics:</b>	20q11.21
<b>Domains:</b>	TRAM, UPF0004, Elp3, Radical_SAM
<b>Gene Summary:</b>	This gene encodes a regulator of cyclin-dependent kinase 5 activity. This protein has also been reported to modify RNA by adding a methylthio-group and may thus have a dual function as an RNA methylthiotransferase and as an inhibitor of cyclin-dependent kinase 5 activity. Alternative splicing results in multiple transcript variants that encode different isoforms. [provided by RefSeq, May 2013]