

Product datasheet for **RG208703**

MTMR2 (NM_016156) Human Tagged ORF Clone

Product data:

Product Type:	Expression Plasmids
Product Name:	MTMR2 (NM_016156) Human Tagged ORF Clone
Tag:	TurboGFP
Symbol:	MTMR2
Synonyms:	CMT4B; CMT4B1
Mammalian Cell Selection:	Neomycin
Vector:	pCMV6-AC-GFP (PS100010)
E. coli Selection:	Ampicillin (100 ug/mL)



[View online »](#)

ORF Nucleotide Sequence:

>RG208703 representing NM_016156
 Red=Cloning site Blue=ORF Green=Tags(s)

TTTTGTAATACGACTCACTATAGGGCGGCCGGGAATTCGTCGACTGGATCCGGTACCGAGGAGATCTGCC
 GCC**CGCATCGCC**

ATGGAGACGAGCTCGAGCTGCGAGAGTCTTGGCTCCCAGCCGGCGCGGCTCGGCCGCCAGCGTGGACT
 CCTTGTCCAGTGCCTCCACTTCTCATTACAGAGAATTCAGTGCATACAAAATCAGCTTCTGTTGTATCATC
 AGATTCCATTTCAACTTCTGCCGACAACCTTTCTCCTGATTTGAGGGTCTCGAGGGAGTCTAACAAAGTTA
 GCAGAAATGGAAGAACCACCTTCTCCAGGAGAAAATATTAAGACATGGCCAAAGATGTAACCTATA
 TATGTCCATTCAGTGGCCTGTACGAGGAAGTCTGACTGTCACGAATTATAGGTTATATTTCAAAGCAT
 GGAACGGGATCCCCATTTGTTTTAGATGCTTCCCTTGGTGTGATAAATAGAGTAGAAAAAATGGTGGT
 GCTTCTAGTCGAGGTGAAAATCTTATGGACTAGAAAAGTGTGTGAAGGATATTAGGAATTTACGATTTG
 CTCATAAACCTGAGGGGGGACAAGAAGATCCATATTTGAGAATCTAATGAAATATGCATTTCTGTCTC
 TAATAACCTGCCTTTTTGCTTTTGAATACAAAGAAGTATCCCTGAAAATGGGTGGAAGCTATATGAC
 CCTCTTTTAGAGTATAGAAGGCAGGGAATTCCAAATGAAAGCTGGAGAATAACAAAGATAAATGAACGAT
 ATGAACCTTGTGATACATACCCTGCCCTCCTGGTTGTGCCAGCAAATATTCCTGATGAAGAATTAAGAG
 AGTGGCATCCTTCAGATCAAGAGGCCGTATCCCAGTTTTATCATGGATTCATCCTGAAAGTCAAGCCACA
 ATCACTCGGTGTAGCCAGCCATGGTTGGAGTGTGAAAGCGAAGCAAAGAAGATGAAAAATACCTTC
 AAGCTATCATGGATCCAATGCCAGTCTCACAAAATCTTTATATTTGATGCCCGGCCAAGTGTTAATGC
 TGTTGCCAACAAAGGCAAGGGTGGAGGTTATGAAAGTGAAGATGCCTATCAAAAATGCTGAAGTATTTTC
 CTGGATATCCACAATATTCATGTTATGAGAGAATCATTACGAAAACCTAAGGAGATTGTACCCCAACA
 TTGAGGAAAACCTCACTGGTTGTCTAACTTGAATCTACTCATTGGCTAGAACATATTAAGCTATTCTTGC
 AGGGGCTCTTAGGATTGCTGACAAGGTAGAGTCAGGGAAGACGCTGTGGTAGTGCATTGCAGTGTGGT
 TGGGATCGCACAGCTCAGCTCACTTCCCTTGCCATGCTCATGTTGGATGGATACTATCGAACCATCCGAG
 GATTTGAAGTCTTGTGGAGAAAGAATGGCTAAGTTTTGGACATCGATTTCAACTAAGAGTTGGCCATGG
 AGATAAGAACCATGCAGATGCAGACAGATCGCCTGTTTTTCTCAATTTATTGACTGTGTCTGCCAGATG
 ACAAGACAGTTTCTACCGCATTTGAATCAATGAGTATTTTCTCATTACCATTTGGACCACCTATACA
 GCTGCTTATTCGGAACATTCCTCTGTAATAGTGAACAACAGAGAGGAAAAGAGAATCTTCTAAAAGGAC
 TGTGTCAGTGTGGTCTTACATAAACAGCCAGCTGGAAGACTTCACTAATCCTCTCTATGGGAGCTATTCC
 AATCATGTCCTTTATCCAGTAGCCAGCATGCGCCACCTAGAGCTCTGGTGGGATATTACATAAGGTGGA
 ATCCACCGATGAAACCACAGGAACCTATTCACAACAGATACAAAGAAGTCTTGCTAAACGAGCAGAGCT
 TCAGAAAAAAGTAGAGGAACTACAGAGAGAGATTTCTAACCGATCAACCTCATCCTCAGAGAGAGCCAGC
 TCTCCTGCACAGTGTGCTCACTCCTGTCCAAACTGTTGTA

ACGCGTACGCGGCCGCTCGAG - GFP Tag - GTTTAA

Protein Sequence:

>RG208703 representing NM_016156
 Red=Cloning site Green=Tags(s)

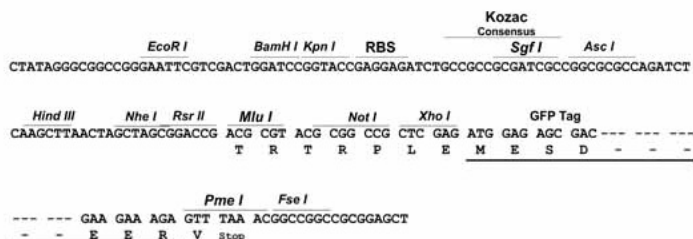
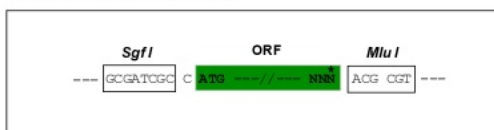
METSSSCESLGSQPAAARPPSVDSLSSASTSHSENSVHTKSASVSSDSISTSDNFSPDLRVLRESNKL
 AEMEEPPLLPGENIKDMAKDVTYICPFTGAVRGTLTVTNYRLYFKSMERDPPFVLDASLGVINRVEKIGG
 ASSRGENSYGLETVCKDIRNLRFAHKPEGRTRRSIFENLMKYAFPVSNLPLFAFEYKEVFPENGWKLVD
 PLLEYRRQGIIPNESWRITKINERYELCDTYPALLVVPANIPDEELKRVASFRSRGRIPVLSWIHPESQAT
 ITRCSQPMVGVSGKRSKEDEKYLQAIMDSNAQSHKIFIFDARPSVNAVANKAKGGGYESEDAYQNAELVF
 LDITHNIHVMRESLRKLKEIVYPNIEETHWLSNLESTHWLEHIKILLAGALRIADKVESGKTSVVVHCSDG
 WDRTAQLTSLAMLMLDGYRIRGFEVLVEKEWLSFGHRFQLRVGHGDKNHADADRSPVFLQFIDCVWQM
 TRQFPATAFEFNEYFLITILDHLYSCLFGTFLCNSEQQRGKENLPKRTVSLWSYINSQLEDFTNPLYGSYS
 NHVLYPVASMRHLELVWGYIIRWNPMPKQPEIHNRYKELLAKRAELQKKVEELQREISNRSTSSSERAS
 SPAQCVTPVQTVV

TRTRPLE - GFP Tag - V

Restriction Sites: Sgfl-MluI

Cloning Scheme:

Cloning sites used for ORF Shutting:



ACCN: NM_016156

ORF Size: 1929 bp

OTI Disclaimer: The molecular sequence of this clone aligns with the gene accession number as a point of reference only. However, individual transcript sequences of the same gene can differ through naturally occurring variations (e.g. polymorphisms), each with its own valid existence. This clone is substantially in agreement with the reference, but a complete review of all prevailing variants is recommended prior to use. [More info](#)

OTI Annotation: This clone was engineered to express the complete ORF with an expression tag. Expression varies depending on the nature of the gene.

Components: The ORF clone is ion-exchange column purified and shipped in a 2D barcoded Matrix tube containing 10ug of transfection-ready, dried plasmid DNA (reconstitute with 100 ul of water).

Reconstitution Method:

1. Centrifuge at 5,000xg for 5min.
2. Carefully open the tube and add 100ul of sterile water to dissolve the DNA.
3. Close the tube and incubate for 10 minutes at room temperature.
4. Briefly vortex the tube and then do a quick spin (less than 5000xg) to concentrate the liquid at the bottom.
5. Store the suspended plasmid at -20°C. The DNA is stable for at least one year from date of shipping when stored at -20°C.

RefSeq: [NM_016156.2](#)

RefSeq Size: 4493 bp

RefSeq ORF: 1932 bp

Locus ID: 8898

UniProt ID: [Q13614](#)

Cytogenetics: 11q21

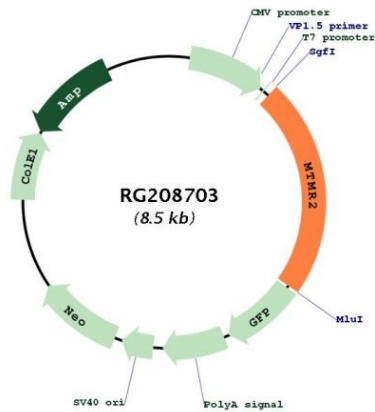
Domains: PTPc_motif, GRAM

Protein Families: Druggable Genome, Phosphatase

Protein Pathways: Fructose and mannose metabolism, Metabolic pathways, Riboflavin metabolism, Thiamine metabolism

Gene Summary: This gene is a member of the myotubularin family of phosphoinositide lipid phosphatases. The encoded protein possesses phosphatase activity towards phosphatidylinositol-3-phosphate and phosphatidylinositol-3,5-bisphosphate. Mutations in this gene are a cause of Charcot-Marie-Tooth disease type 4B, an autosomal recessive demyelinating neuropathy. Alternatively spliced transcript variants encoding multiple isoforms have been found for this gene. [provided by RefSeq, Aug 2011]

Product images:



Circular map for RG208703