

Product datasheet for **RG208682**

WDR54 (NM_032118) Human Tagged ORF Clone

Product data:

Product Type:	Expression Plasmids
Product Name:	WDR54 (NM_032118) Human Tagged ORF Clone
Tag:	TurboGFP
Symbol:	WDR54
Mammalian Cell Selection:	Neomycin
Vector:	pCMV6-AC-GFP (PS100010)
E. coli Selection:	Ampicillin (100 ug/mL)
ORF Nucleotide Sequence:	>RG208682 representing NM_032118 Red=Cloning site Blue=ORF Green=Tags(s)

TTTTGTAATACGACTCACTATAGGGCGGCCGGGAATTCGTCGACTGGATCCGGTACCGAGGAGATCTGCC
GCC**CGATCGCC**

ATGTTCCGCTGGGAGCGCTCCATCCCCTGCGAGGCTCGGCCGCCGCCCTGTGCAACAACCTCAGTGTGC
TGCAGTGCCGGCTCGCAACCTCACGTATTTGGCGTGGTTCATGGACCAAGCGCCAGCTTCTCAGCGC
TGCTCTGAGGGTGTGCCCTTGGCCAGCGCCAGCTCCACGCTAAGGAGGGTGTGGAGTGAGTCCCCCA
CTTATCACTCAGGTCCACTGGTGTCTCCCTCCCTCCGAGTGTGCTGGTACTCACCTCACATCAGGAA
TACAGATGTACGAGTCCAATGGCTACACCATGGTCTACTGGCATGCACTGGACTCTGGAGATGCCTCCCC
AGTACAGGCTGTGTTTGGCCGGGAATTGCTGCCAGTGGCCACTTCATCTGTGTGGGAACGTGGTCAGGC
CGGGTGTGGTGTGGACATCCCAGCAAAGGGTCCCAACATTGTACTGAGCGAGGAGCTGGCTGGGCACC
AGATGCCAATCACAGACATTGCCACCGAGCCTGCCAGGGACAGGATTGTGTGGCTGACATGGTACGGC
AGATGACTCAGGCTTGTGTGTCTGGCGGTGAGGGCCAGAATTCACATTATTGACCCGCATTCCAGGA
TTTGGAGTCCGTGCCCTCTGTGCAGCTGTGGCAGGGGATCATAGCAGCAGGCTATGGGAACGGACAAG
TGCATCTATATGAGGCCACTACAGGAAATCTACATGTCCAGATCAATGCCATGCCCGGGCCATCTGCGC
CCTGGACCTGGCTTCTGAGGTGGCAAGCTACTCTCTGCAGGTGAGGACACCTTTGTGCATATCTGGAAG
CTGAGCAGAAACCCAGAGAGTGGCTACATTGAGGTGGAACACTGTGATGGTGTGTCGCCGACACCC
AGCTGTGTGGTGTGCTGATTTTGTGATTCTCAGGCAACTCTTTGCTGTGACTGGCTATGACCTTGC
GATCCGGAGATTCAGCAGTGTG

ACGCGTACGCGGCCGCTCGAG - GFP Tag - GTTTAA



[View online »](#)

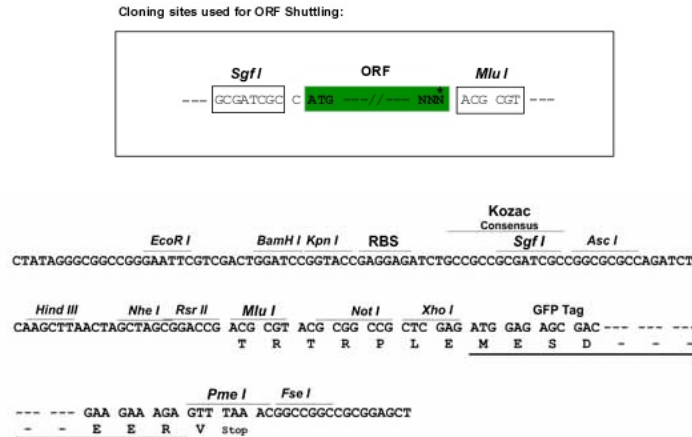
Protein Sequence: >RG208682 representing NM_032118
Red=Cloning site Green=Tags(s)

MFRWERSIPLRGSAAALCNL SVLQLPARNLTYFGVVHGPSAQLLSAAPEGVPLAQRQLHAKEGAGVSPP
 LITQVHWCVLPFRVLLVLTSHRGIQMYESNGYTMVYWHALDSGDASPVQAVFARGIAASGHFICVGTWSG
 RVLVFDIPAKGPNIVLSEELAGHQMPITDIATEPAQGQDCVADMVTADDSGLLCVWRSRSGPEFTLLTRIPG
 FGVPSPSVQLWQGI AAGYGNQVHL YEATTGNLHVQINAHARAICALDLASEV GKLLSAGEDTFVHIWK
 LSRNPESGYIEVEHCHGECVADTQLCGARFCSSGNSF AVTGYDLAEIRRFSSV

TRTRPLE - GFP Tag - V

Restriction Sites: SgfI-MluI

Cloning Scheme:



ACCN: NM_032118

ORF Size: 1002 bp

OTI Disclaimer: The molecular sequence of this clone aligns with the gene accession number as a point of reference only. However, individual transcript sequences of the same gene can differ through naturally occurring variations (e.g. polymorphisms), each with its own valid existence. This clone is substantially in agreement with the reference, but a complete review of all prevailing variants is recommended prior to use. [More info](#)

OTI Annotation: This clone was engineered to express the complete ORF with an expression tag. Expression varies depending on the nature of the gene.

Components: The ORF clone is ion-exchange column purified and shipped in a 2D barcoded Matrix tube containing 10ug of transfection-ready, dried plasmid DNA (reconstitute with 100 ul of water).

Reconstitution Method:

1. Centrifuge at 5,000xg for 5min.
2. Carefully open the tube and add 100ul of sterile water to dissolve the DNA.
3. Close the tube and incubate for 10 minutes at room temperature.
4. Briefly vortex the tube and then do a quick spin (less than 5000xg) to concentrate the liquid at the bottom.
5. Store the suspended plasmid at -20°C. The DNA is stable for at least one year from date of shipping when stored at -20°C.

RefSeq: [NM_032118.4](#)

RefSeq Size: 1223 bp

RefSeq ORF: 1005 bp

Locus ID: 84058

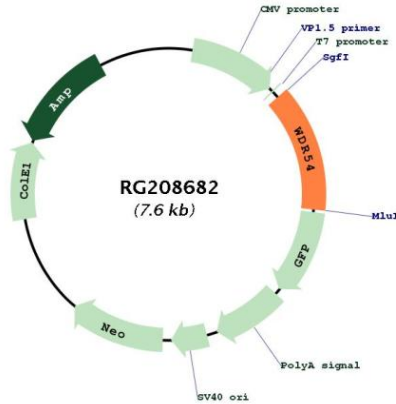
UniProt ID: [Q9H977](#)

Cytogenetics: 2p13.1

Domains: WD40

Gene Summary: When cross-linked to form dimers and trimers, it has a regulatory effect on ERK signaling pathway activity in response to EGF stimulation. Colocalizes with the EGF receptor in WDR54-specific vesicle where it sustains the internalization and controls the degradation of the EGF receptor after EGF stimulation.[UniProtKB/Swiss-Prot Function]

Product images:



Circular map for RG208682