

Product datasheet for **RG208660**

MTMR14 (NM_001077526) Human Tagged ORF Clone

Product data:

Product Type:	Expression Plasmids
Product Name:	MTMR14 (NM_001077526) Human Tagged ORF Clone
Tag:	TurboGFP
Symbol:	MTMR14
Synonyms:	C3orf29
Mammalian Cell Selection:	Neomycin
Vector:	pCMV6-AC-GFP (PS100010)
E. coli Selection:	Ampicillin (100 ug/mL)



[View online »](#)

ORF Nucleotide Sequence:

>RG208660 representing NM_001077526
 Red=Cloning site Blue=ORF Green=Tags(s)

TTTTGTAATACGACTCACTATAGGGCGGCCGGGAATTCGTCGACTGGATCCGGTACCGAGGAGATCTGCC
 GCC**CGCATCGCC**

ATGGCCGGCGCTCGGGCCGCCGCCCGCTGCCTCGGCGGGTCTCGGCCTCTTCAGGCAACCAGCCGC
 CTCAGGAGCTGGGGCTTGGGGAGCTGCTGGAGGAGTTCTCCCGGACTCAGTACCGGGCCAAGGATGGCAG
 CGGGACCGGGCGCTCTAAGGTTGAGCGCATTGAGAAGAGATGTCTGGAGCTGTTTGGCCGAGACTACTGT
 TTCAGCGTGATTCCAAACACGAATGGGGATATCTGTGGCCACTATCCCGGCACATCGTGTTCCTGGAGT
 ATGAGAGTTCTGAGAAGGAGAAAGACACGTTTGGAGTACCGTACAGGTGAGCAAGTTGCAAGACCTCAT
 CCACCGCAGCAAGATGGCCCGTGCAGAGGACGGTTTGTCTGCCAGTAATCCTGTTCAAGGGCAAGCAC
 ATTTGCAGGTGGCCCACTGGCTGGATGGGGAGAGCTGTATGGACGCTCAGGCTACAATATTTTTTCT
 CAGGGGGTGCAGATGATGCTGGCAGATGTGGAGGACGTCACGGAGGAGGACTGTGCTCTTCAAGTGG
 TGACACGCATCTTTTATAAGGTCAGAGGCTATGACATCAAGCTGCTTCGATACCTGTCAAGTCAATAC
 ATCTGTGACCTGATGGTGGAGAACAAGAAGGTGAAGTTTGGCATGAATGTAACTCCTCTGAGAAGGTGG
 ACAAAGCCAGCGCTATGCCGACTTCACTCTCCTCTCCATCCCGTATCCAGGCTGTGAATTTTTCAAGGA
 ATATAAGATCGGGATTACATGGCAGAAGGGCTCATATTTAACTGGAAGCAGGACTACGTTGATGCCCA
 TTGAGCATCCCGACTTCTGACTCACTCTGAACTTACTGGAGCCAGTATCAGTGTGGGACTG
 TGCAACAAACACAAAACCTGAAAGCTGCTGCTTTCCTTAGTTAACAGTGATGATGACAGCGGGCTGCT
 GGTACTGTATCTCAGGCTGGGATCGGACCCCTCTCATCTCCCTCTGCGCCTTTCCTTGTGGGCT
 GATGGGCTCATCCACACGTCCTGAAGCCACTGAGATCCTCTACCTCACTGTGGCCTATGACTGTTCC
 TCTTCGGGCACATGTTGGTAGATCGGCTCAGCAAAGGGGAGGAGATTTTCTTCTTCTCAATTTTTT
 GAAGCATATTACCTCCGAGGAGTTCTCTGCTCTGAAGACCAGAGGAGGAAGATTTGCCAGCCCGGAT
 GGAGGCTTACCCTGGAAGACATCTGCATGCTGAGACGAAAGGACCGTGGCAGCACCACCAGCCTTGGCA
 GCGACTTCTCCCTGGTCAATGGAGAGTTCCCGAGGAGCCACTGGGAGCTTACCTATGAGGCCGTGGAGCT
 GGTCCCAGCAGGAGCGCCAACCTCAGGCAGCTTGGAGGAAGAGCCACTCATCCTCTCCACAGAGTGCCTC
 TGGAACCGGCCACAACCCTCAGAGGACCGCTTGCCTTCCAGCAGGGGCTGGCGGAAGCCAGGTCTTCCA
 GCTCCTTCTCAAACCATTCTGATAACTTTTTCAGGATGGGTAGCAGTCCCCTGGAGGTCCCAAACC
 CAGGCTTGCAGCCCTGAGTATCGAGAGACTCGGCTGCAGGAGGTGCGCTCAGCCTTCTTGGCTGCGTAC
 AGCAGCACAGTGGGGCTTCGGGCAGTAGCCCCAGTCCTCCGGTGCCATCGGGGCCTGCTGGAGCAAT
 TTGCCCGTGGTGTGACTCCGGAGCATCAGCAGCAATGCCTT

ACGCGTACGCGGCCGCTCGAG – GFP Tag – GTTTAA

Protein Sequence:

>RG208660 representing NM_001077526
 Red=Cloning site Green=Tags(s)

MAGARAAAAASAGSSASSGNQPPQELGLGELLEEFSTQYRAKDGSGTGGSKVERIEKRCLLEFGRDYC
 FSVIPNTNGDICGHYPRHIVFLEYESSEKEKDTFESTVQVSKLQDLIHRSKMARCRGRFVCPVILFKGKH
 ICRSATLAGWELYGRSGYNYFFSGGADDAWADVTEEDCALRSGDTHLFDKVRGYDIKLLRYLSVKY
 ICDLMVENKVKFGMNVTSSEKVDKAQRYADFTLLSIPYPGCEFFKEYKDRDYMAEGLIFNWKQDYVDAP
 LSIPDFLTHSLNIDWSQYQCWDLVQQTQNYLKLKLLSLVNSDDSGLLVHCISGWDRTPLFISLLRSLWA
 DGLIHTSLKPTEILYLTVAYDWFLFGHMLVDRLSKGEEIFFFCFNFLKHITSEEFSAKLTQRRKSLPARD
 GGFTELEDICMLRRKDRGTTSLGSDFLVMESSPGATGSFTYEAVELVPAGAPTQAARWKSHPSSPQSVL
 WNRQPSEDRLPSQQGLAEARSSSSSSNHSNDFFRMGSSPLEVPKPRLAALSDRETRLQEVRSFAFLAAY
 SSTVGLRAVAPSPSGAIGGLLEQFARGVGLRSISSNAL

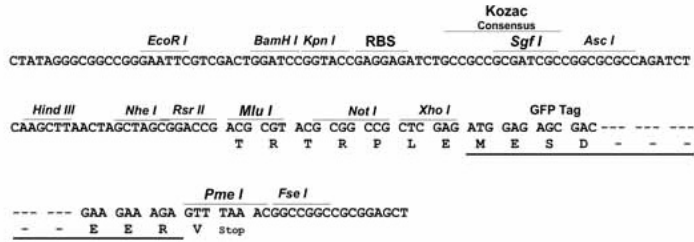
TRTRPLE – GFP Tag – V

Restriction Sites:

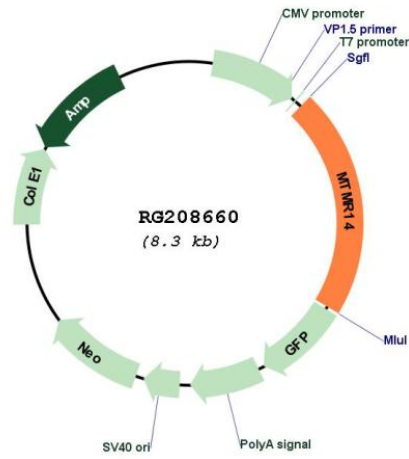
Sgfl-MluI

Cloning Scheme:

Cloning sites used for ORF Shutting:



Plasmid Map:



ACCN: NM_001077526

ORF Size: 1794 bp

OTI Disclaimer:	The molecular sequence of this clone aligns with the gene accession number as a point of reference only. However, individual transcript sequences of the same gene can differ through naturally occurring variations (e.g. polymorphisms), each with its own valid existence. This clone is substantially in agreement with the reference, but a complete review of all prevailing variants is recommended prior to use. More info
OTI Annotation:	This clone was engineered to express the complete ORF with an expression tag. Expression varies depending on the nature of the gene.
Components:	The ORF clone is ion-exchange column purified and shipped in a 2D barcoded Matrix tube containing 10ug of transfection-ready, dried plasmid DNA (reconstitute with 100 ul of water).
Reconstitution Method:	<ol style="list-style-type: none">1. Centrifuge at 5,000xg for 5min.2. Carefully open the tube and add 100ul of sterile water to dissolve the DNA.3. Close the tube and incubate for 10 minutes at room temperature.4. Briefly vortex the tube and then do a quick spin (less than 5000xg) to concentrate the liquid at the bottom.5. Store the suspended plasmid at -20°C. The DNA is stable for at least one year from date of shipping when stored at -20°C.
RefSeq:	NM_001077526.3
RefSeq Size:	2358 bp
RefSeq ORF:	1797 bp
Locus ID:	64419
UniProt ID:	Q8NCE2
Cytogenetics:	3p25.3
Protein Families:	Druggable Genome, Phosphatase, Secreted Protein
Gene Summary:	This gene encodes a myotubularin-related protein. The encoded protein is a phosphoinositide phosphatase that specifically dephosphorylates phosphatidylinositol 3,5-biphosphate and phosphatidylinositol 3-phosphate. Mutations in this gene are correlated with autosomal dominant centronuclear myopathy. Alternate splicing results in multiple transcript variants. A pseudogene of this gene is found on chromosome 18.[provided by RefSeq, Apr 2010]