

Product datasheet for **RG208644**

Fatty Acid Synthase (FASN) (NM_004104) Human Tagged ORF Clone

Product data:

Product Type:	Expression Plasmids
Product Name:	Fatty Acid Synthase (FASN) (NM_004104) Human Tagged ORF Clone
Tag:	TurboGFP
Symbol:	Fatty Acid Synthase
Synonyms:	FAS; OA-519; SDR27X1
Mammalian Cell Selection:	Neomycin
Vector:	pCMV6-AC-GFP (PS100010)
E. coli Selection:	Ampicillin (100 ug/mL)
ORF Nucleotide Sequence:	>RG208644 representing NM_004104 Red=Cloning site Blue=ORF Green=Tags(s)

TTTTGTAATACGACTCACTATAGGGCGGCCGGAATTCGTCGACTGGATCCGGTACCGAGGAGATCTGCC
GCC**CGATCGCC**

ATGGAGGAGGTGGTATTGCCGGCATGTCCGGGAAGCTGCCAGAGTCGGAGAAGTTCAGGAGTTCTGGG
ACAACCTCATCGGCGGTGGGACATGGTACGGACGATGACCGTCGCTGGAAGGCGGGCTCTACGGCT
GCCCCGGGTCGGCAAGCTGAAGGACCTGTCTAGGTTTGTATGCCTCCTTCTTCGGAGTCCACCCCAAG
CAGGCACACACGATGGACCCTCAGCTGCGGCTGCTGCTGGAAGTCACCTATGAAGCCATCGTGGACGGAG
GCATCAACCCAGATTCACTCCGAGGAACACACTGGCGTCTGGGTGGGCGTGAGCGGCTCTGAGACCTC
GGAGGCCCTGAGCCGAGACCCCGAGACACTCGTGGGCTACAGCATGGTGGGCTGCCAGCGAGCGATGATG
GCCAACCGGCTCTCCTTCTTTCGACTTCAGAGGGCCAGCATCGCACTGGACACAGCCTGCTCCTCCA
GCCTGATGGCCCTGCAGAAGCCTACCAGGCCATCCACAGCGGGCAGTGCCTGCCGCCATCGTGGGGGG
CATCAATGTCCTGCTGAAGCCCAACACCTCCGTGCAGTTCTTGAGGCTGGGGATGCTCAGCCCCGAGGGC
ACCTGCAAGGCCCTTCGACACAGCGGGGAATGGTACTGCCGCTCGGAGGGTGTGGTGGCCGCTCTGCTGA
CCAAGAAGTCCCTGGCCCGGGGTGTACGCCACCATCCTGAACGCCGGCACCAATACAGATGGCTTCAA
GGAGCAAGGCGTGACCTTCCCTCAGGGGATATCCAGGAGCAGCTCATCCGCTCGTTGTACCAGTCGGCC
GGAGTGGCCCTGAGTCATTTGAATACATCGAAGCCACGGCACAGGCACCAAGTGGCGACCCCGAGG
AGCTGAATGGCATCACCCGAGCCCTGTGCGCCACCCGCCAGGAGCCGCTGCTCATCGGCTCCACCAAGTC
CAACATGGGGCACCCGGAGCCAGCCTCGGGGCTGGCAGCCTGGCCAAGGTGCTGCTGTCCCTGGAGCAC
GGGCTCTGGGCCCAACCTGCACCTTCCATAGCCCAACCCTGAGATCCCAGCGCTGTTGGATGGCGGC
TGCAGGTGGTGGACCAGCCCTGCCGTCGTCGGGCAACGTGGGCATCAACTCCTTTGGCTTCGGGGG
CTCCAACGTGCACATCATCTGAGGCCAACACGCAGCCGCCCGCCACCCGCCACATGCCACCCTG
CCCCGTCTGCTGCGGGCCAGCGGACGCCCTGAGGCCGTGAGGAGCTGCTGGAGCAGGGCTCCGGC
ACAGCCAGGACCTGGCTTCTGAGCATGCTGAACGACATCGCGGCTGTCCCGCCACCGCCATGCCCTT
CCGTGGCTACGCTGTGCTGGGTGGTGGAGCGGGTGGCCAGAGGTGCAGCAGGTGCCCGCTGGCGAGCGC



CCGCTCTGGTTCATCTGCTCTGGGATGGGCACACAGTGGCGCGGGATGGGGCTGAGCCTCATGCGCCTGG
 ACCGCTTCCGAGATTCCATCCTACGCTCCGATGAGGCTGTGAAGCCATTCGGCCTGAAGGTGTCACAGCT
 GCTGCTGAGCACAGACGAGACACCTTTGATGACATCGTCCATTCGTTTGTGAGCCTGACTGCCATCCAG
 ATAGGCCCTCATAGACCTGCTGAGCTGCATGGGGCTGAGGCCAGATGGCATCGTCGGCCACTCCCTGGGGG
 AGGTGGCTGTGGCTACGCCACGGCTGCCTGTCCAGGAGGAGGCCGTCTCGCTGCCTACTGGAGGGG
 ACAGTGCATCAAAGAAGCCATCTCCCGCGGGCGCCATGGCAGCCGTGGGCTTGTCTGGGAGGAGTGT
 AAACAGCGCTGCCCCCGGGCGTGGTCCCGCTGCCACAACCTCCAAGGACACAGTCACCATCTCGGGAC
 CTCAGGCCCGGTGTTTGAAGTTCGTGGAGCAGCTGAGGAAGGAGGGTGTGTTGCCAAGGAGGTGCGGAC
 CGGCGGTATGGCCTTCCACTCCTACTTTCATGGAGGCCATCGCACCCCACTGCTGCAAGGAGCTCAAGAAG
 GTGATCCGGGAGCCGAAGCCACGTTTCAGCCGCTGGCTCAGCACCTCTATCCCGAGGCCAGTGGCACA
 GCAGCCTGGCAGCAGCTCCTCCGCCGAGTACAATGTCAACAACCTGGTGAAGCCTGTGCTGTTCCAGGA
 GGCCCTGTGGCAGTGCCTGAGCAGCGGTGGTGTGGAGATCGCGCCCCAGCCCTGCTGCAGGCTGTC
 CTGAAGCGTGGCCTGAAGCCGAGCTGCACCATCATCCCCCTGATGAAGAAGGATCACAGGGACAACCTGG
 AGTTCTTCTCGCCGGCATCGGCAGGCTGCACCTCTCAGGCATCGACGCCAACCCCAATGCCTTGTCCC
 ACCTGTGGAGTCCAGCTCCCGAGGAACTCCCTCATCTCCCACTCATCAAGTGGGACCACAGCCTG
 GCCTGGGACGTGCCGGCCGCGGAGGACTTCCCCAACGGTTCAGGTTCCCCCTCAGCCGCCATCTACAACA
 TCGACACCAGCTCCGAGTCTCCTGACCACTACCTGGTGGACCACACCCTCGACGGTCCGCTCCTTCCC
 CGCCACTGGTACCTGAGCATAGTGTGGAAGACGCTGGCCCGCGCCCTGGGCTGGGCGTCGAGCAGCTG
 CCTGTGGTGTGTTGAGGATGTGGTGTGCACACAGGCCACCATCCTGCCAAGACTGGGACAGTGTCCCTGG
 AGGTACGGCTCCTGGAGGCTCCCGTGCCTTCGAGGTGTGAGAGAACGGCAACCTGGTAGTGAAGTGGAA
 GGTGTACAGTGGGATGACCTGACCCAGGCTCTTCGACCACCCGAAAGCCCCACCCCAACCCACAG
 GAGCCCCCTTCTCGCCAGGCTGAAGTTTACAAGGAGCTGCGTCTGCGTGGCTACGACTACGGCCCTC
 ATTTCCAGGGCATCCTGGAGGCCAGCTGGAAGGTGACTCGGGGAGGCTGCTGTGAAGGATAACTGAGGT
 GAGCTTATGGACACCATGCTGCAGATGTCCATCCTGGGCTCGGCCAAGCACGGCCTGTACTGCCACC
 CGTGTACCGCCATCCACATCGACCCTGCCACCCACAGGAGAGAAGCTGTACACACTGCAGGACAAGGCC
 AAGTGGTGCAGTGGTGGTGAAGCAGGTGGCTGAGGGTACAGTGGCCGGAGGCGTCCACATCTCCGGGCT
 CCACACTGAGTCGGCCCCGCGCGGAGCAGGAGCAGGAGTGGCCATCCTGGAGAAGTTTTGCTTCACT
 CCCCACACGGAGGAGGGTGCCTGTCTGAGCGGCTGCCCTGCAGGAGGAGCTGCAACTGTGCAAGGGGC
 TGGTGCAGGCACTGCAGACCAGGTGACCCAGCAGGGGCTGAAGATGGTGGTGGCCGGACTGGATGGGGC
 CCAGATCCCCGGGACCCCTCACAGCAGGAACTGCCCGGCTGTGTGGCTGCCTGCAGGCTTCAGCTC
 AACGGAACTGCAGTGGAGCTGGCGCAGGTGTGGCCAGGAGAGGCCAAGTGCAGAGGACCCCTC
 TGCTCAGCGGCCCTCGACTCCCGGCACTCAAGGCCTGCCTGGACACTGCCGTGGAGAACATGCCAG
 CCTGAAGATGAAGTGGTGGAGGTGCTGGCTGGCCACGGTCACTGTATTCCCGCATCCCAGGCCTGCTC
 AGCCCCATCCCCTGCTGCAGCTGAGCTACACGGCCACCAGCCGCAACCCCAAGGCCCTGGAGGCTGCC
 AGGCCGAGCTGCAGCAGCAGCAGCTTGGCCAGGGCCAGTGGGATCCCGCAGACCTGCCCCAGCGCCCT
 GGGCAGCGCCGACCTCCTGGTGTGCAACTGTGCTGTGGCTGCCCTCGGGGACCCGGCCTCAGCTCTCAGC
 AACATGGTGGCTGCCCTGAGAGAAGGGGGCTTTCTGCTCCTGCACACACTGCTCCGGGGCACCCCTCG
 GGGACATCGTGGCCTTCTCACCTCCACTGAGCCGAGTATGGCCAGGGCATCCTGAGCCAGGACCGCTG
 GGAGACCCTTCTCCAGGGTGTGCTGCGCCTGGTGGGCTGAAGAAGTCTTCTACGGCTCCACGCTC
 TTCTGTGCCCGCGCCACCCCGCAGGACAGCCCATCTTCTGCCGGTGGACGATAACAGCTTCGCT
 GGGTGGAGTCTCTGAAGGGCATCCTGGCTGACGAAGACTTCCCGCCTGTGTGGCTGAAGGCCATCAA
 CTGTGCCACTCGGGCGTGGTGGCTTGGTGAAGTGTCTCCGCCGAGAGCCGGCGGGAACCGCCTCCGG
 TGTGTGCTGCTCTCAACCTCAGCAGCAGCTCCACGTCGCCGAGGTGGACCCGGGCTCCGAGAACTGC
 AGAAGGTGTTGCAGGGAGACCTGGTGTGAAGTCTACCGCAGCGGGGCTGGGGGGCTTCCGCCACTT
 CCTGCTGGAGGAGACAAGCCTGAGGAGCCGACGGCACATGCCTTTGTGAGCACCTCACCCGGGGGAC
 CTGTCTCCATCCGCTGGTCTGCTCCTCGCTGCGCCATGCCAGCCACCTGCCCTGGCGCCAGCTCT
 GCAGGCTACTACGCCCTCCCTCAACTCCCGCAGCATCATGCTGGCCACTGGCAAGTGTCCCTGATGC
 CATCCCAGGGAAGTGGACCTCCCAGGACAGCCTGCTAGGTATGGAGTTCTCGGGCCGAGACGCCAGCGGC
 AAGCGTGTGATGGGACTGGTGCCTGCCAAGGGCCTGGCCACCTGTCTCTGCTGTACCCGACTTCTCT
 GGGATGTGCCTTCCAACCTGGACGCTGGAGGAGGCGGCCTCGGTGCCTGTGCTTACAGCAGCGCCTACTA
 CGCGCTGGTGGTGCCTGGGCGGGTGCGCCCGGGGAGACGCTGCTCATCCACTCGGGCTCGGGCGGGT
 GGCCAGGCCGCCATCGCCATCGCCCTCAGTCTGGGCTGCCGCGTCTTACCACCGTGGGGTGGCTGAGA

AGCGGGCGTACCTCCAGGCCAGGTTCCCCAGCTCGACAGCACCAGCTTCGCCAACTCCCGGGACACATC
CTTCGAGCAGCATGTGCTGTGGCACACGGGCGGGAAGGGCGTTGACCTGGTCTTGAACCTCTTGGCGGAA
GAGAAGCTGCAGGCCAGCGTGAGGTGCTTGGCTACGCACGGTCGCTTCTTGAAAATTGGCAAATTCGACC
TTTCTCAGAACCACCCGCTCGGCATGGCTATCTTCTGAAGAACGTGACATTCCACGGGGTCTACTGGA
TGGGTCTTCAACGAGAGCAGTGTGACTGGCGGGAGGTGTGGGCGCTTGTGCAGGCCGGCATCCGGGAT
GGGTGGTACGGCCCTCAAGTGCACGGTGTCCATGGGGCCAGGTGGAGGACGCCTCCGCTACATGG
CCCAAGGGAAGCACATTGGCAAAGTCTGTGCAGGTGCTTGGGAGGAGCCGGAGGCAGTGTGAAGGG
GGCCAAACCCAAAGCTGATGTCGGCCATCTCAAGACCTTCTGCCGGCCACAAGAGCTACATATCGCT
GGTGGTCTGGGTGGCTTCCGCTGGAGTTGGCGCAGTGGCTGATACAGCGTGGGGTGCAGAAGCTCGTGT
TGACTTCTCGCTCCGGGATCCGGACAGGCTACCAGGCCAAGCAGGTCCGCCGGTGGAGGCCAGGGCGT
ACAGGTGCAGGTGTCCACCAGCAACATCAGTCACTGGAGGGGGCCGGGGCCTATTGCCGAGGCGGGC
CAGCTTGGGCCCTGGCGGGCTTCAACCTGGCCGTGGTCTTGGAGATGGCTTGTGGAGAACCAGA
CCCCAGAGTTCTCCAGGACGTCTCAAGCCAAAGTACAGCGGCACCCTGAACCTGGACAGGGTACCCG
AGAGGCGTGCCCTGAGCTGGACTACTTTGGTCTTCTCCTCTGTGAGCTGCGGGCGTGGCAATGCGGGA
CAGAGCAACTACGGCTTTGCCAATTCGCCATGGAGCGTATCTGTGAGAAACGCCGGCACGAAGGCTCC
CAGGCCTGGCCGTGCAGTGGGGCCCATCGGCGCAGTGGGCATTTGGTGGAGACGATGAGCACCAACGA
CACGATCGTCAGTGGCACGCTGCCCCAGCGCATGGCGTCTGCCTGGAGGTGCTGGACCTTTCTTGAAC
CAGCCCCACATGGTCTGAGCAGCTTTGTGCTGGCTGAGAAGGCTGCGGCCTATAGGGACAGGGACAGCC
AGCGGGACCTGGTGGAGGCCGTGGCACACATCTGGGCATCCCGGACTTGGCTGTGTAACCTGGACAG
CTACTGGCGGACCTGGCCCTGGACTCGCTCATGAGCGTGGAGGTGCGCCAGACGCTGGAGCGTGAGCTC
AACCTGGTGTGTCCGTGCGCGAGGTGCGGCAACTCACGCTCCGAAACTGCAGGAGCTGTCTCAAAGG
CGGATGAGGCCAGCGAGCTGGCATGCCCCACGCCAAGGAGGATGGTCTGGCCAGCAGCAGACTCAGCT
GAACCTGCGCTCCCTGCTGGTGAACCCGAGGGCCCCACCCTGATGCGGCTCAACTCCGTGCAGAGCTCG
GAGCGGCCCTGTTCTTGGTGCACCCAATCGAGGGCTCCACCACCGTGTCCACAGCCTGGCCTCCCGGC
TCAGCATCCCCACCTATGGCCTGCAGTGCACCCGAGCTGCGCCCTTGACAGCATCCACAGCCTGGCTGC
CTACTACATCGACTGCATCAGGCAGGTGCAGCCGAGGGCCCTACCGCGTGGCCGGTACTCTACGGG
GCCTGCGTGGCCTTTGAAATGTGCTCCCAGCTGCAGGCCAGCAGAGCCAGCCCCACCACAACAGCC
TCTTCTGTTGACGGCTCGCCACCTACGTACTGGCCTACACCCAGAGCTACCGGGCAAAGCTGACCCC
AGGCTGTGAGGCTGAGGCTGAGACGGAGCCATATGCTTCTTCTGTCAGCAGTTCACGGACATGGAGCAC
AACAGGGTGTGGAGGCGCTGTGCGGCTGAAGGGCTAGAGGAGCGTGGCAGCCGCCGTGGACCTGA
TCATCAAGAGCCACCAGGGCCTGGACGCCAGGAGCTGAGCTTTGCGGCCGGTCTTCTACTACAAGCT
GGTGCCGCTGAGCAGTACACACCCAAGCCAAGTACCATGGCAACGTGATGCTACTGCGGCCAAGACG
GGTGGCGCCTACGGCGAGGACCTGGGCGCGGACTACAACCTCTCCAGGTATGCGACGGGAAAGTATCCG
TCCACGTCATCGAGGGTGACCACCGCACGCTGCTGGAGGGCAGCGGCCTGGAGTCCATCATCAGCATCAT
CCACAGCTCCCTGGCTGAGCCACGCGTGAAGCGTGGCGGAGGGC

ACGCGGCCGCTCGAG – GFP Tag – GTTTAA

Protein Sequence: >RG208644 representing NM_004104
 Red=Cloning site Green=Tags(s)

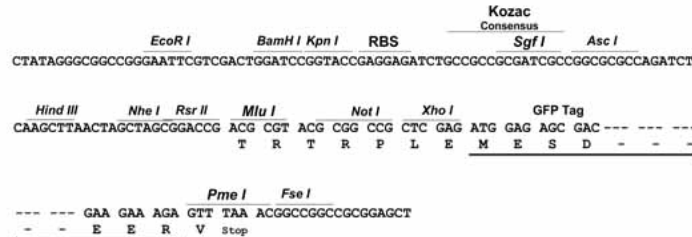
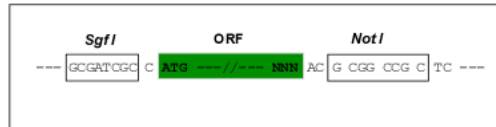
MEEVVIAGMSGKLPESENLQEFWDNLIGGVMVTDDRRWKAGLYGLPRRSGKLDL SRFDASFFGVHPK
 QAHTMDPQLRLLLEVTYEAIVDGGINPDSL RGTHTGVVWVSGSETSEALSRDPETLVGYSMVGCRAMM
 ANRLSFFFDFRGP SIALDTACSSSLMALQNA YQAIHSGQC PAAIVGGINVLKPN TSVQFLRLGMLSPEG
 TCKAFDTAGNGYCRSEGVVAVLLTKKSLARRVYATILNAGTNTDGFKEQGVTFPSGDIQEQLIRSLYQSA
 GVAPESFEYIEAHGTGTKVGD PQELNGITRALCATRQEPLLIGSTKSNMGHPEPASGLAALAKVLLSLEH
 GLWAPNLHFHSPNPEIPALLDGR LQVVDQPLPVRGGNVGINSFGFGGSNVHII LRPN TQPPPAPAPHATL
 PRLLRASGRTP EAVQK LLEQGLRHSQDLAFLSMLNDIAAVPATAMPFRGYAVLGGERRGPEVQV PAGER
 PLWFCISGMGTQWRGMGLSMLRDRFRDSILRSDEAVKPFGLKVSQ LLLSTDESTFDDIVHSFVSLTAIQ
 IGLIDLSCMGLRPDGI VGHSLGEVACGYADGCLSQEEAVLAAYWRGQC IKAHLPPGAMA AVLSWEEC
 KQRCPPGVVPACHNSKDTVTISGPQAPVFEFVEQLRKEGVFAKEVRTGGMAFHSYFMEAIAPLLQELKK
 VIREPKPRSARWLSTSIPEAQWHSSLARTSSAEYNNVNLVSPVLFQEALWHVPEHAVVLEIAPHALLQAV
 LKRGLKPSCTIIPLMKKDHRDNL EFLLAGIGRLHL SGIDANPNALFPPVEFPAPRG TPLISPLIKWDHSL
 AWDVPAAEDEF PNGSGSPSAAIYNIDTSS ESPDHYLVDHTLDGRVLPATGYLSIVWKT LARALGLGVEQL
 PVVFEDVVLHQATILPKTGTVSL EVRLEASRAFEVSENGNLVVS GKVYQWDDPDRFLFDHPESPTPNPT
 EPLFLAQAEVYKELRLRGYDYGPHFQGI LEASLEGDSGRLLWKDNWVSFMDTMLQMSILGS AKHGLYLPT
 RVTAIHIDPATHRQKLYTLQDKA QVADVVSRLRVTVAGGVHISGLHTESAPRRQEQQVPILEKFCFT
 PHTEEGCLSERAA LQEELQLCKGLVQALQTTVTQQGLKMVVPGLDGAQIPRDP SQQELPRLLSAACRLQL
 NGNLQLELAQVLAQERPKLPEDPLL SGLLDSPALKA CLDTAVENMP SLKMKVVEVL AGHGLYSRIPGLL
 SPHPLLQLSYTATDRHPQAL EAAQAE LQQHDVAQGWDPADPAPSALGSADLLVCNCAVAALGDPASALS
 NMVAALREGGFLLLHTLLRGHPLGDI VAFLTSTEPQYGGI LSQDAWESLFSRVSLRLVGLKKS FYGSTL
 FLCRRPTPQDSPIFLPVDDT SFRWVESLKGILADEDSSRPVWLKAINCATSGVVGLVNCLRREP GGNRLR
 CVLLSNLSSTSHVPEVDPGSAELQKVLQGD LVMNVYRDGAWGAFRHFLL EEDKPEPTAHAFVSTLTRGD
 LSSIRWVCSSLRHAQPTCPGAQLCTVYYASLNFRD IMLATGKLS PDAIPGK WTSQDSLLGMEFSGRDASG
 KRVMGLVPAKGLATSVLLSPDFLWDVPSNWTLEEAASVPVVYSTAYYALVVRGRV RPGETLLIHSGSGGV
 GQAAIAIALSLGCRVFTTVGSAEKRAYLQARFPQLDSTSFANSRDT SFEQHVLWHTGGKVDLVLNSLAE
 EK LQASVRCLATHGRFLEIGKFDL SQNHPLGMAIFLKNVTFHGVLLDAFFNESSADWRE VWALVQAGIRD
 GVV RPLKCTVFHGAQVEDAFRYMAQGHIGKVVVQVLAEEPEAVLKGAKPKLMSAISKTFCPAHKS YIIA
 GGLGGFLELAQWLIQRGVQKLVLT SRSGIRTGYQAKQVRRRRQGVQVQVSTSNISSELEGARGLIAEAA
 QLGPVGGVFNLA VVLRDGLLENQTP EFFQDVCKPKYSGTLNLD RVTREACP ELDYFVVFSSVSCGRGNAG
 QSNYGFANSAMERIC EKKRRHEGLPGLAVQWGAIGDVGILVETMSTNDTIVSGTL PQRMASCLEVLDLFLN
 QPHMVLSSFVLAEKAAAYRDRDSQRDLVEAVAHILGIRD LAAVNLDSSLADLGLDSLMSVEVRQTLEREL
 NLVLSVREVRQLTLRKLQELSSKADEASELACPTPKEDGLAQQTQLNLRSLVNPEGPTLMRLNSVQSS
 ERPLFLVHPIEGSTTVFHSLASRLSIPTYGLQCTRAAPLDSIHSLAAYYIDCIRQVQPEGPYRVAGYSYG
 ACVAFEMCSQLQAQQSPAPTHNSLFLFDGSPTYVLA YTQSYRAKLTPGCEAEAE TEAICFFVQQFTDMEH
 NRVLEALLPLKGLEERVA AVDLIIKSHQGLDRQEL SFAARSFYKLRAAEQYTPKAKYHGNVMLLRAKT
 GGAYGEDLGADYNLSQVCDGKVSVHVIEGDHRTLLEGSGL ESIIISIIHSSLAEP RVSVREG

TRPLE - GFP Tag - V

Restriction Sites: SgfI-NotI

Cloning Scheme:

Cloning sites used for ORF Shutting:


ACCN: NM_004104

ORF Size: 7533 bp

OTI Disclaimer: Due to the inherent nature of this plasmid, standard methods to replicate additional amounts of DNA in *E. coli* are highly likely to result in mutations and/or rearrangements. Therefore, OriGene does not guarantee the capability to replicate this plasmid DNA. Additional amounts of DNA can be purchased from OriGene with batch-specific, full-sequence verification at a reduced cost. Please contact our customer care team at custsupport@origene.com or by calling 301.340.3188 option 3 for pricing and delivery.

The molecular sequence of this clone aligns with the gene accession number as a point of reference only. However, individual transcript sequences of the same gene can differ through naturally occurring variations (e.g. polymorphisms), each with its own valid existence. This clone is substantially in agreement with the reference, but a complete review of all prevailing variants is recommended prior to use. [More info](#)

OTI Annotation: This clone was engineered to express the complete ORF with an expression tag. Expression varies depending on the nature of the gene.

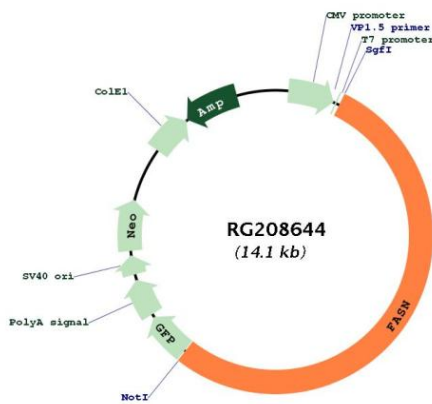
Components: The ORF clone is ion-exchange column purified and shipped in a 2D barcoded Matrix tube containing 10ug of transfection-ready, dried plasmid DNA (reconstitute with 100 ul of water).

- Reconstitution Method:**
1. Centrifuge at 5,000xg for 5min.
 2. Carefully open the tube and add 100ul of sterile water to dissolve the DNA.
 3. Close the tube and incubate for 10 minutes at room temperature.
 4. Briefly vortex the tube and then do a quick spin (less than 5000xg) to concentrate the liquid at the bottom.
 5. Store the suspended plasmid at -20°C. The DNA is stable for at least one year from date of shipping when stored at -20°C.

RefSeq: [NM_004104.4](#), [NP_004095.4](#)

RefSeq Size:	8481 bp
RefSeq ORF:	7536 bp
Locus ID:	2194
UniProt ID:	P49327
Cytogenetics:	17q25.3
Protein Families:	Druggable Genome
Protein Pathways:	Fatty acid biosynthesis, Insulin signaling pathway, Metabolic pathways
Gene Summary:	The enzyme encoded by this gene is a multifunctional protein. Its main function is to catalyze the synthesis of palmitate from acetyl-CoA and malonyl-CoA, in the presence of NADPH, into long-chain saturated fatty acids. In some cancer cell lines, this protein has been found to be fused with estrogen receptor-alpha (ER-alpha), in which the N-terminus of FAS is fused in-frame with the C-terminus of ER-alpha. [provided by RefSeq, Jul 2008]

Product images:



Circular map for RG208644