

## Product datasheet for **RG208636**

### LRRC59 (NM\_018509) Human Tagged ORF Clone

#### Product data:

Product Type:	Expression Plasmids
Product Name:	LRRC59 (NM_018509) Human Tagged ORF Clone
Tag:	TurboGFP
Symbol:	LRRC59
Synonyms:	p34; PRO1855
Mammalian Cell Selection:	Neomycin
Vector:	pCMV6-AC-GFP (PS100010)
E. coli Selection:	Ampicillin (100 ug/mL)
ORF Nucleotide Sequence:	>RG208636 representing NM_018509 Red=Cloning site Blue=ORF Green=Tags(s)

TTTTGTAATACGACTCACTATAGGGCGGCCGGAATTCGTCGACTGGATCCGGTACCGAGGAGATCTGCC  
GCC**CGATCGCC**

ATGACCAAGGCCGGTAGCAAGGGCGGGAACCTCCGCGACAAGCTGGACGGCAACGAAGTGGACCTGAGCC  
TCAGCGACCTGAATGAGGTCCCGGTGAAGGAGCTGGCTGCCCTTCCAAGGCCACCATCTGGATCTGTC  
TTGTAATAAACTGACTACTCTACCGTCGGATTTCTGTGGCCTCACACACCTGGTGAAGCTAGACCTGAGT  
AAGAACAAGCTGCAGCAGCTGCCAGCAGACTTTGGCCGTCTGGTCAACCTCCAGCACCTGGATCTCCTCA  
ACAACAAGCTGGTCACCTTGCTGTGAGCTTTGCTCAGCTCAAGAACCTGAAGTGGTGGACCTGAAGGA  
TAACCCCTGGATCCTGTCTGGCCAAGGTGGCAGGTGACTGCTTGGATGAGAAGCAGTGTAAAGCAGTGT  
GCAACAAGGTGTTACAGCACATGAAGGCCGTGCAGGCAGATCAGGAGCGGGAGAGGCAGCGCGGCTGG  
AAGTAGAAGCTGAGGCAGAGAAGAAGCGTGAGGCTAAGCAGCGAGCTAAGGAAGCTCAGGAGCGGGAAC  
GCGGAAGCGGGAGAAGGCGGAAGAGAAGGAGCGCCGGAGAAGGAGTATGATGCCCTCAAAGCAGCCAAG  
CGGAGCAGGAGAAGAACTAAGAAGGAAGCAATCAGGCCCGAAATCTAAGTCTGGCTCCCGTCCCC  
GCAAGCCACCCCGAAGCACACTCGTTCCTGGGCTGTGCTGAAGCTGCTGCTGCTGCTGCTGCTATT  
TGGTGTGGCGGGAGGGCTGGTTGCTTGTGCGGTGACAGAGCTGCAGCAGCAGCCCTCTGCACCAGCGTG  
AACACCATCTATGACAATGCGGTCCAGGGTCTACGCCCCATGAGATCCTCCAGTGGGTCTCCAGACCG  
ACTCTCAGCAG

**ACGCGT**ACGCGGCCGCTCGAG - GFP Tag - GTTTAA



[View online »](#)

**Protein Sequence:** >RG208636 representing NM\_018509  
 Red=Cloning site Green=Tags(s)

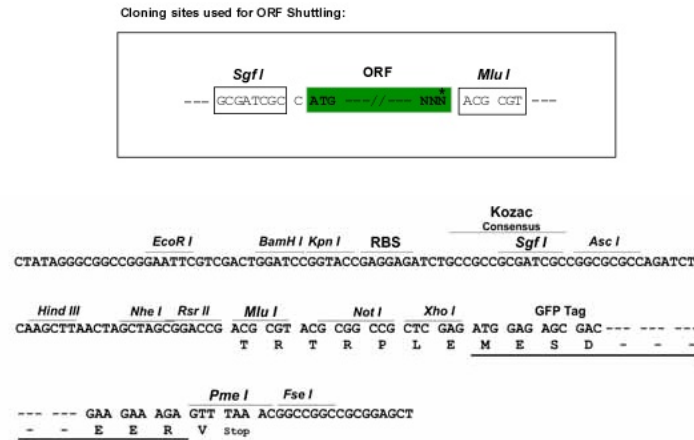
MTKAGSKGGNLRDKLDGNELDLSDLNEVPVKELAAALPKATILDLSKNKLTTLPSDFCGLTHLVKLDLS  
 KNKLQQLPADFGRLVNLQHLDLLNNKLVLPVSFAQLKNLKWLDLKDNPDPVLAKVAGDCLDEKQCKQC  
 ANKVLQHMKAQADQERERQRRLLEVEREAEEKKREAKQRAKEAQERELRKREKAEKERRRKEYDALKAAK  
 REQEKKPKKEANQAPKSKSGSRPRKPPPRKHTRSWAVLKLLLLLLFGVAGGLVACRVTELQQQLCTSV  
 NTIYDNAVQGLRRHEILQWVLQTDSSQ

TRTRPLE - GFP Tag - V

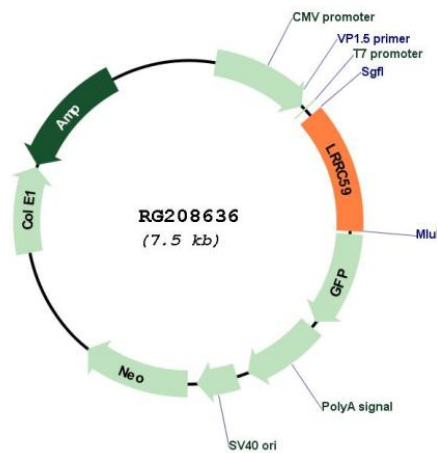
**Restriction Sites:**

SgfI-MluI

**Cloning Scheme:**



**Plasmid Map:**



**ACCN:** NM\_018509

**ORF Size:** 921 bp

<b>OTI Disclaimer:</b>	The molecular sequence of this clone aligns with the gene accession number as a point of reference only. However, individual transcript sequences of the same gene can differ through naturally occurring variations (e.g. polymorphisms), each with its own valid existence. This clone is substantially in agreement with the reference, but a complete review of all prevailing variants is recommended prior to use. <a href="#">More info</a>
<b>OTI Annotation:</b>	This clone was engineered to express the complete ORF with an expression tag. Expression varies depending on the nature of the gene.
<b>Components:</b>	The ORF clone is ion-exchange column purified and shipped in a 2D barcoded Matrix tube containing 10ug of transfection-ready, dried plasmid DNA (reconstitute with 100 ul of water).
<b>Reconstitution Method:</b>	<ol style="list-style-type: none"><li>1. Centrifuge at 5,000xg for 5min.</li><li>2. Carefully open the tube and add 100ul of sterile water to dissolve the DNA.</li><li>3. Close the tube and incubate for 10 minutes at room temperature.</li><li>4. Briefly vortex the tube and then do a quick spin (less than 5000xg) to concentrate the liquid at the bottom.</li><li>5. Store the suspended plasmid at -20°C. The DNA is stable for at least one year from date of shipping when stored at -20°C.</li></ol>
<b>RefSeq:</b>	<a href="#">NM_018509.4</a>
<b>RefSeq Size:</b>	2863 bp
<b>RefSeq ORF:</b>	924 bp
<b>Locus ID:</b>	55379
<b>UniProt ID:</b>	<a href="#">Q96AG4</a>
<b>Cytogenetics:</b>	17q21.33
<b>Protein Families:</b>	Transmembrane
<b>Gene Summary:</b>	Required for nuclear import of FGF1, but not that of FGF2. Might regulate nuclear import of exogenous FGF1 by facilitating interaction with the nuclear import machinery and by transporting cytosolic FGF1 to, and possibly through, the nuclear pores.[UniProtKB/Swiss-Prot Function]