

Product datasheet for **RG208632**

LRRC8A (NM_019594) Human Tagged ORF Clone

Product data:

Product Type:	Expression Plasmids
Product Name:	LRRC8A (NM_019594) Human Tagged ORF Clone
Tag:	TurboGFP
Symbol:	LRRC8A
Synonyms:	AGM5; HsLRRC8A; LRRC8; SWELL1
Mammalian Cell Selection:	Neomycin
Vector:	pCMV6-AC-GFP (PS100010)
E. coli Selection:	Ampicillin (100 ug/mL)



[View online »](#)

ORF Nucleotide Sequence:

>RG208632 representing NM_019594
 Red=Cloning site Blue=ORF Green=Tags(s)

TTTTGTAATACGACTCACTATAGGGCGGCCGGAATTCGTCGACTGGATCCGGTACCGAGGAGATCTGCC
 GCC**CGGATCGCC**

ATGATTCCGGTGACAGAGCTCCGCTACTTTGCGGACACGCAGCCAGCATACCGGATCCTGAAGCCGTGGT
 GGGATGTGTTACAGACTACATCTCTATCGTCATGCTGATGATTGCCGTCTTCGGGGGACGCTGCAGGT
 CACCCAAGACAAGATGATCTGCCTGCCTTGTAAAGTGGGTACCAAGGACTCCTGCAATGATTCTGTTCCGG
 GGCTGGGACGCCCTGGCCCGGAGCCACCTACCCAACTCCACCATTCTGCCGACCCCTGACACGGGCC
 CCACAGGCATCAAGTATGACCTGGACCGGACCAGTACAACCTACGTGGACGCTGTGTGCTATGAGAACCG
 ACTGCACTGGTTTCCAAGTACTTCCCCTACCTGGTGCTTCTGCACACGCTCATCTTCTGGCCTGCAGC
 AACTTCTGGTTCAAATTCGCGCACAGCTCGAAGCTGGAGCACTTTGTGTCTATCCTGCTGAAGTGTCT
 TCGACTCGCCCTGGACCACGAGGCCCTGTGCGAGACAGTGGTGGAGGAGAGCGACCCCAAGCCGGCCTT
 CAGCAAGATGAATGGGTCCATGGACAAAAGTCAATCGACCGTCAGTGAGGACGTGGAGGCCACCGTGCC
 ATGCTGCAGCGGACCAAGTACCGGATCGAGCAGGGTATCGTGGACCGCTCAGAGACGGGCGTGTGGACA
 AGAAGGAGGGGAGCAAGCCAAGGCGCTGTTTGAAGAGTGAAGAAGTCCGGACCCATGTGGAGGAGGG
 GGACATTTGTGTACCGCTCTACATGCGGCAGACCATCATCAAGGTGATCAAGTTCATCCTCATCATCTGC
 TACACCGTCTACTACGTGCACAACATCAAGTTCGACGTGGACTGCACCGTGGACATTGAGAGCCTGACGG
 GCTACCGCACCTACCGCTGTGCCACCCCTGGCCACACTCTTCAAGATCCTGGCGTCTTCTACATCAG
 CCTAGTCATCTTCTACGGCTCATCTGCATGTATACACTGTGGTGGATGCTACGGCGCTCCCTCAAGAAG
 TACTCGTTTGAGTCGATCCGTGAGGAGAGCAGCTACAGCGACATCCCGACGTCAAGAACGACTTCGCT
 TCATGCTGCACCTCATTGACCAATACGACCCGCTCTACTCCAAGCGCTTCGCCGTCTTCTGTGCGAGGT
 GAGTGAGAACAAGCTGCGGCAGCTGAACCTCAACAACGAGTGGACGCTGGACAAGCTCCGGCAGCGGCTC
 ACCAAGAACGCGCAGGACAAGCTGGAGCTGCACCTGTTTATGCTCAGTGGCATCCCTGACACTGTGTTT
 ACCTGGTGGAGCTGGAGGCTCCTCAAGCTGGAGCTGATCCCGACGTGACCATCCCGCCAGCATTGCCCA
 GCTCACGGGCTCAAGGAGCTGTGGCTCTACCACACAGCGCCAAAGATTGAAGCGCCCGCTGGCCTTC
 CTGCGGAGAACCTGCGGGCGTGCACATCAAGTTCACCGACATCAAGGAGATCCCGCTGTGGATCTATA
 GCCTGAAGACTGGAGGAGCTGCACCTGACGGGCAACCTGAGCGCGGAGAACACCGCTACATCGTCAT
 CGACGGGCTGCGGAGCTCAAACGCCTCAAGGTGCTGCGGCTCAAGAGCAACCTAAGCAAGCTGCCACAG
 GTGGTACAGATGTGGGCTGCACCTGCAGAAGCTGTCCATCAACAATGAGGGCACCAAGCTCATCGTCC
 TCAACAGCTCAAGAAGATGGCGAACCTGACTGAGCTGGAGCTGATCCGCTGTGACTGGAGCGCATCCC
 CCACTCCATCTTCAAGCTCCACAACCTGCAGGAGATTGACCTCAAGGACAACAACCTCAAGACCATCGAG
 GAGATCATCAGCTTCCAGCACCTGCACCGCTCACCTGCCTTAAGCTGTGGTACAACCACATCGCCTACA
 TCCCCATCCAGATCGGCAACCTCAACAACCTGGAGCGCTCTACCTGAACCGCAACAAGATCGAGAAGAT
 CCCCACCCAGCTCTTCTACTGCCGAAGCTGCGTACCTGGACCTCAGCCACAACAACCTGACCTTCTC
 CCTGCCGACATCGGCTCCTGCAGAACCTCCAGAACCTAGCCATCACGGCAACCGGATCGAGACGCTCC
 CTCCGGAGCTCTTCCAGTCCGGAAGCTGCGGGCCCTGCACCTGGGCAACAACGTGCTGCAGTCACTGCC
 CTCCAGGGTGGGCGAGCTGACCAACCTGACGCAGATCGAGCTGCGGGCAACCGGCTGGAGTGCCTGCCT
 GTGGAGCTGGGCGAGTGCCCACTGCTCAAGCGCAGCGGCTTGGTGGTGGAGGAGGACCTGTTCAACACAC
 TGCCACCCGAGGTGAAGGAGCGGCTGTGGAGGCTGACAAGGAGCAGGCC

ACGCGTACGCGGCCGCTCGAG - GFP Tag - GTTTAA

Protein Sequence: >RG208632 representing NM_019594
Red=Cloning site Green=Tags(s)

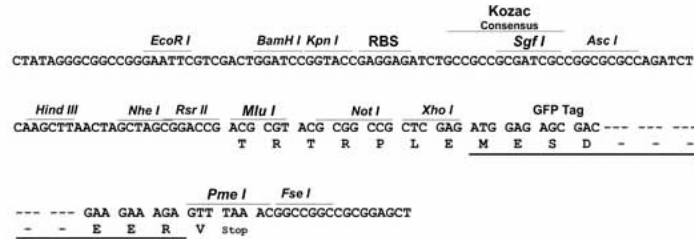
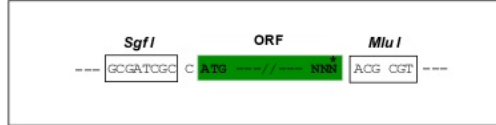
MIPVTELYRFADTQPAYRILKPWWVFTDYISIVMLIAVFGGTLQVTQDKMICLPCKWVTKDCNDSFR
GWAAPGPEPTYPNSTILPTDGTGPTGIKYDLDRHQYNYVDAVCYENRLHWFACYFPYLVLLHTLIFLACS
NFWFKFPRTSSKLEHFVSILLKCFDSPWTRALSETVVEESDPKPAFSKMNGSMDKKSSTVSEDVEATVP
MLQRTKSRIEQIVDRSETGVLDKKEGEQAKALFEKVKKFRTHVEEGDIVYRLYMRQTIKVIKIFILIIIC
YTVYYVHNIKFDVDCTVDIESLTGYRTRYCAHPLATLFKILASFYISLVIFYGLICMYTLWMLRRSLKK
YSFESIREESSYSDIPDVKNDFAFMLHLIDQYDPLYSKRFAVFLSEVSENKLRQLNLNNEWTLDKLRQRL
TKNAQDKLELHLFMLSGIPDVFDFLVELEVLELIPDVTIPPSIAQLTGLKELWLYHTAAKIEAPALAF
LRENLRALHIKFTDIKEIPLWIYSLKTLEELHLTGNSAENNRIVIDGLRELKRLKVLRLKSNLSKLPQ
VVTDVGVHLQKLSINNEGTKLIVLNSLKKMANLTELELIRCDLERIPHSIFSLHNLQEIDLKDNNLKTIE
EIIISFQHLHRLTCLKLWYNHAIYIPIQIGNLTNLERLYLNRNKIEKIPTQLFYCRKLRYLDSLHNNLTFL
PADIGLLQNLQNLAITANRIETLPPPELQCRKLRALHLGNNVLQSLPSRVGELTNLTQIELRGNRLECLP
VELGECPLLKRSGLVVEEDLFNTLPPEVKERLWRADKEQA

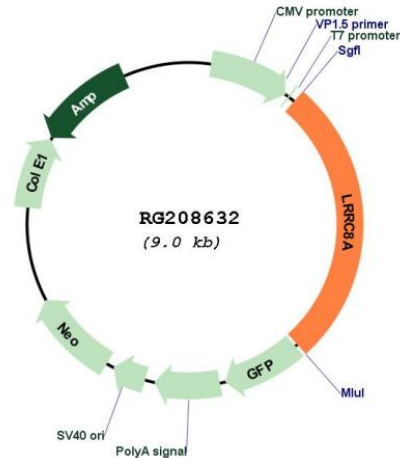
TRTRPLE - GFP Tag - V

Restriction Sites: Sgfl-MluI

Cloning Scheme:

Cloning sites used for ORF Shutting:



Plasmid Map:


ACCN: NM_019594

ORF Size: 2430 bp

OTI Disclaimer: The molecular sequence of this clone aligns with the gene accession number as a point of reference only. However, individual transcript sequences of the same gene can differ through naturally occurring variations (e.g. polymorphisms), each with its own valid existence. This clone is substantially in agreement with the reference, but a complete review of all prevailing variants is recommended prior to use. [More info](#)

OTI Annotation: This clone was engineered to express the complete ORF with an expression tag. Expression varies depending on the nature of the gene.

Components: The ORF clone is ion-exchange column purified and shipped in a 2D barcoded Matrix tube containing 10ug of transfection-ready, dried plasmid DNA (reconstitute with 100 ul of water).

Reconstitution Method:

1. Centrifuge at 5,000xg for 5min.
2. Carefully open the tube and add 100ul of sterile water to dissolve the DNA.
3. Close the tube and incubate for 10 minutes at room temperature.
4. Briefly vortex the tube and then do a quick spin (less than 5000xg) to concentrate the liquid at the bottom.
5. Store the suspended plasmid at -20°C. The DNA is stable for at least one year from date of shipping when stored at -20°C.

RefSeq: [NM_019594.3](#)

RefSeq Size: 4296 bp

RefSeq ORF: 2433 bp

Locus ID: 56262

UniProt ID: [Q8IWT6](#)

Cytogenetics: 9q34.11

Protein Families: Transmembrane

Gene Summary: This gene encodes a protein belonging to the leucine-rich repeat family of proteins, which are involved in diverse biological processes, including cell adhesion, cellular trafficking, and hormone-receptor interactions. This family member is a putative four-pass transmembrane protein that plays a role in B cell development. Defects in this gene cause autosomal dominant non-Bruton type agammaglobulinemia, an immunodeficiency disease resulting from defects in B cell maturation. Multiple alternatively spliced transcript variants, which encode the same protein, have been identified for this gene. [provided by RefSeq, Jul 2008]