

## Product datasheet for **RG208629**

### **TMEM179B (NM\_199337) Human Tagged ORF Clone**

#### Product data:

**Product Type:** Expression Plasmids  
**Product Name:** TMEM179B (NM\_199337) Human Tagged ORF Clone  
**Tag:** TurboGFP  
**Symbol:** TMEM179B  
**Mammalian Cell Selection:** Neomycin  
**Vector:** pCMV6-AC-GFP (PS100010)  
**E. coli Selection:** Ampicillin (100 ug/mL)  
**ORF Nucleotide Sequence:** >RG208629 representing NM\_199337  
Red=Cloning site Blue=ORF Green=Tags(s)

TTTTGTAATACGACTCACTATAGGGCGGCCGGAATTCGTCGACTGGATCCGGTACCGAGGAGATCTGCC  
GCC**CGATCGCC**

ATGGCGCTGTCCTGGCTGCAGCGCGTCGAGCTTGCCTCTTTGCTGCCGCTTCTGTGCGGGCCGTGG  
CGGCCGCGCGATGACTCGGACCCAGGGCTCCTCAGTGGTAGATGTCCCTGTATGGTGTGGCCACCCT  
GAATGGCTCCTCCCTGGCCTTATCCCGTCCCTCAGCACCATCCCTGTGCTACTTTGTAGCTGGGGCCTCT  
GGCCTCTTGGCCCTCTACTGCCTCCTGCTTTTGTCTTCTGGATCTACAGCAGCTGCATCGAGGACTCCC  
ACAGAGGTGCTATAGGGCTGCGCATTGCCTGGCCATCTCAGTATAGCCGCTTCTGCTTGGTGTGTC  
TGCTGTATCCTTCGATTTGGCACCAGGTCTCTGCAACTCCATCATCTCCTTGAACACTACAATTAGC  
TGTTCTGAAGCCAGAAAATTCCATGGACACCCCTGGAAGTCTGCTGAGTTTTACTCCAACCTACACA  
ATGCTGAAACCTCTTCTGGGTGAATTTGGTATTGGTGTGTTGCTTGGTGTCCAGGTCGTGCAGTG  
GAAGTCTGAAGCCACCCATACCGCCTCTGGAGAGGGGTGACCTGAGTGGAGCTCTGAGACAGATGCT  
CTCGTTGGGTCACGCCTTCCATTCC

**ACGCGT**ACGCGGCCGCTCGAG - GFP Tag - GTTTAA

**Protein Sequence:** >RG208629 representing NM\_199337  
Red=Cloning site Green=Tags(s)

MALSWLQRVELALFAAAF LCGAVAAAAMTRTQGSFSGRCPLYGVATLNGSSLALSRPSAPSLCYFVAGAS  
GLLALYCLLLLLFWIYSSCIEDSHRGAIGLRIALAISAIIVFLVLSACILRFGRSLCNSIISLNTTIS  
CSEAQKIPWTPPGTALQFYSNLHNAETSSWVNLVLWCVVLLVQVQWKSEATPYRPLERGDPEWSSETDA  
LVGSRLSHS

**TRTRPLE** - GFP Tag - V

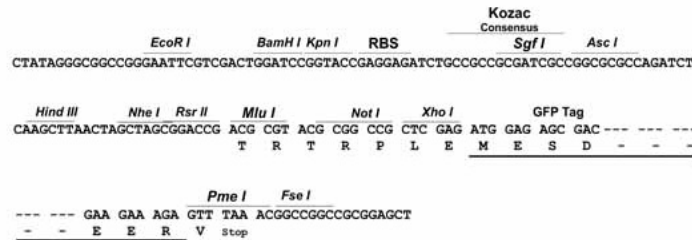
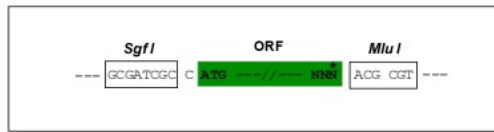


[View online »](#)

**Restriction Sites:** Sgfl-MluI

**Cloning Scheme:**

Cloning sites used for ORF Shutting:



**ACCN:** NM\_199337

**ORF Size:** 657 bp

**OTI Disclaimer:** The molecular sequence of this clone aligns with the gene accession number as a point of reference only. However, individual transcript sequences of the same gene can differ through naturally occurring variations (e.g. polymorphisms), each with its own valid existence. This clone is substantially in agreement with the reference, but a complete review of all prevailing variants is recommended prior to use. [More info](#)

**OTI Annotation:** This clone was engineered to express the complete ORF with an expression tag. Expression varies depending on the nature of the gene.

**Components:** The ORF clone is ion-exchange column purified and shipped in a 2D barcoded Matrix tube containing 10ug of transfection-ready, dried plasmid DNA (reconstitute with 100 ul of water).

**Reconstitution Method:**

1. Centrifuge at 5,000xg for 5min.
2. Carefully open the tube and add 100ul of sterile water to dissolve the DNA.
3. Close the tube and incubate for 10 minutes at room temperature.
4. Briefly vortex the tube and then do a quick spin (less than 5000xg) to concentrate the liquid at the bottom.
5. Store the suspended plasmid at -20°C. The DNA is stable for at least one year from date of shipping when stored at -20°C.

**RefSeq:** [NM\\_199337.3](#)

**RefSeq Size:** 881 bp

**RefSeq ORF:** 660 bp

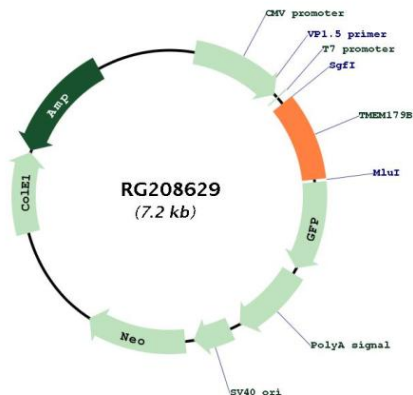
**Locus ID:** 374395

**UniProt ID:** [Q7Z7N9](#)

Cytogenetics: 11q12.3

Protein Families: Transmembrane

**Product images:**



Circular map for RG208629