

## Product datasheet for **RG208620**

### **CITED4 (NM\_133467) Human Tagged ORF Clone**

#### Product data:

**Product Type:** Expression Plasmids  
**Product Name:** CITED4 (NM\_133467) Human Tagged ORF Clone  
**Tag:** TurboGFP  
**Symbol:** CITED4  
**Mammalian Cell Selection:** Neomycin  
**Vector:** pCMV6-AC-GFP (PS100010)  
**E. coli Selection:** Ampicillin (100 ug/mL)  
**ORF Nucleotide Sequence:** >RG208620 representing NM\_133467  
 Red=Cloning site Blue=ORF Green=Tags(s)

TTTTGTAATACGACTCACTATAGGGCGGCCGGAATTCGTCGACTGGATCCGGTACCGAGGAGATCTGCC  
 GCC**CGATCGCC**

ATGGCCGACCACCTGATGCTCGCCGAGGGCTACCGCTGGTGCAGAGGCCCGCTCCGCCGCGGCCGCC  
 ATGGCCCTCATGCGCTCCGGACTCTGCCCGCTACGCGGGCCCGGGCTGGACAGTGGGTGAGGCCGCG  
 GGGGGCTCCGCTGGGGCCCGCCGCCCGCCCAACCCGGGGCCCTGGCGTACGGGGCTTCGGGCCCGCC  
 TCCTCCTCCAGCCCTTCCGGCCGTGCCTCCGCCGGCCGCGGGCATCGCGCACCTGCAGCCTGTGGCGA  
 CGCCGTACCCCGCCGCGCGGCCGCCCGCCCAACCGCTCCGGGAGGCCCGCCCGGGCCCGCAGCCGCGCC  
 AAGCGCCGACGCCCGCCCGCCCGCCGCGCACGCCCTGGGCGGCATGGACGCCGAACCTCATCGACGAGGAG  
 GCGCTGACGTCGCTGGAGCTGGAGCTCGGGCTGCACCGCTGCGCGAGCTGCCCGAGCTTCTCTGGGCC  
 AGAGCGAGTTCGACTGCTTCTCGGACTTGGGGTCCGCGCCCGCCCGGCTCCGTGAGCTGC

**ACGCGTACGCGGCCGCTCGAG** - GFP Tag - GTTTAA

**Protein Sequence:** >RG208620 representing NM\_133467  
 Red=Cloning site Green=Tags(s)

MADHMLAEGYRLVQRPPSAAAAHGPLALRTLPPYAGPLDSGLRPRGAPLGP PPPRQPGALAYGAFGPP  
 SSFQFPFVPPPAAGIAHLQPVA TPYPGRAAAPNAPGGPPGPQPAPSAAAPPPPAHALGMDAELIDEE  
 ALTSLELELGLHRVRELPELFLGQSEFDCFSDLGSAPPAGSVSC

**TRTRPLE** - GFP Tag - V

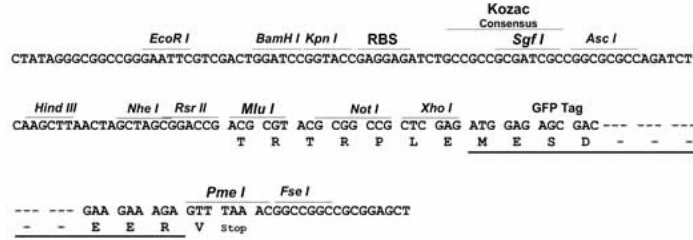
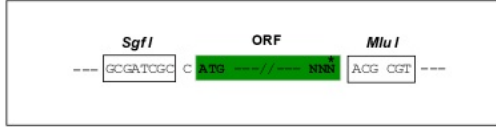
**Restriction Sites:** SgfI-MluI



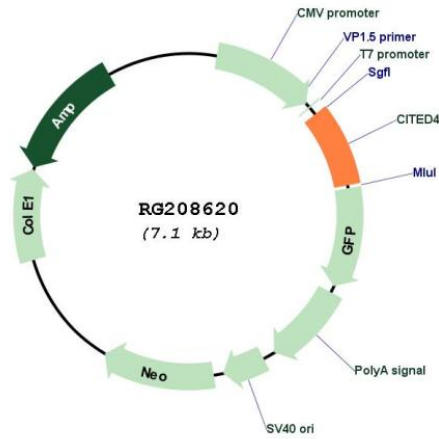
[View online »](#)

Cloning Scheme:

Cloning sites used for ORF Shutting:



Plasmid Map:



ACCN: NM\_133467  
 ORF Size: 552 bp

<b>OTI Disclaimer:</b>	<p>Due to the inherent nature of this plasmid, standard methods to replicate additional amounts of DNA in E. coli are highly likely to result in mutations and/or rearrangements. Therefore, OriGene does not guarantee the capability to replicate this plasmid DNA. Additional amounts of DNA can be purchased from OriGene with batch-specific, full-sequence verification at a reduced cost. Please contact our customer care team at <a href="mailto:custsupport@origene.com">custsupport@origene.com</a> or by calling 301.340.3188 option 3 for pricing and delivery.</p> <p>The molecular sequence of this clone aligns with the gene accession number as a point of reference only. However, individual transcript sequences of the same gene can differ through naturally occurring variations (e.g. polymorphisms), each with its own valid existence. This clone is substantially in agreement with the reference, but a complete review of all prevailing variants is recommended prior to use. <a href="#">More info</a></p>
<b>OTI Annotation:</b>	<p>This clone was engineered to express the complete ORF with an expression tag. Expression varies depending on the nature of the gene.</p>
<b>Components:</b>	<p>The ORF clone is ion-exchange column purified and shipped in a 2D barcoded Matrix tube containing 10ug of transfection-ready, dried plasmid DNA (reconstitute with 100 ul of water).</p>
<b>Reconstitution Method:</b>	<ol style="list-style-type: none"><li>1. Centrifuge at 5,000xg for 5min.</li><li>2. Carefully open the tube and add 100ul of sterile water to dissolve the DNA.</li><li>3. Close the tube and incubate for 10 minutes at room temperature.</li><li>4. Briefly vortex the tube and then do a quick spin (less than 5000xg) to concentrate the liquid at the bottom.</li><li>5. Store the suspended plasmid at -20°C. The DNA is stable for at least one year from date of shipping when stored at -20°C.</li></ol>
<b>RefSeq:</b>	<a href="#">NM_133467.3</a>
<b>RefSeq Size:</b>	1312 bp
<b>RefSeq ORF:</b>	555 bp
<b>Locus ID:</b>	163732
<b>UniProt ID:</b>	<a href="#">Q96RK1</a>
<b>Cytogenetics:</b>	1p35-p34
<b>Protein Families:</b>	Transcription Factors
<b>Gene Summary:</b>	<p>The protein encoded by this intronless gene belongs to the CITED family of transcriptional coactivators that bind to several proteins, including CREB-binding protein (CBP) and p300, via a conserved 32 aa C-terminal motif, and regulate gene transcription. This protein also interacts with transcription factor AP2 (TFAP2), and thus may function as a co-activator for TFAP2. Hypermethylation and transcriptional downregulation of this gene has been observed in oligodendroglial tumors with deletions of chromosomal arms 1p and 19q, and associated with longer recurrence-free and overall survival of patients with oligodendroglial tumors. [provided by RefSeq, Aug 2011]</p>