

Product datasheet for **RG208613**

OLIG3 (NM_175747) Human Tagged ORF Clone

Product data:

Product Type: Expression Plasmids
Product Name: OLIG3 (NM_175747) Human Tagged ORF Clone
Tag: TurboGFP
Symbol: OLIG3
Synonyms: Bhlhb7; bHLHe20
Mammalian Cell Selection: Neomycin
Vector: pCMV6-AC-GFP (PS100010)
E. coli Selection: Ampicillin (100 ug/mL)
ORF Nucleotide Sequence: >RG208613 representing NM_175747
Red=Cloning site Blue=ORF Green=Tags(s)

TTTTGTAATACGACTCACTATAGGGCGCCGGGAATTCGTCGACTGGATCCGGTACCGAGGAGATCTGCC
GCC**CGATCGC**C

ATGAATTCTGATTCGAGCTCTGTCTCCAGCAGAGCTTCATCTCCGGACATGGATGAGATGTACCTGAGGG
ACCACCACCACCGCCACCACCACCAGGAGAGCCGTCTCAACTCGGTCTCGTCCACGCAGGGCGATAT
GATGCAGAAGATGCCCGGGAAAGCCTCTCGGGGCTGGCGCCAAGGCCGGGAGAGAGCAGCAAGTAC
AAAATCAAGAAGCAGCTGTCGGAGCAGGACCTACAGCAGTTGAGGCTGAAGATCAACGGACGCGAACGCA
AGCGGATGCACGACCTGAACCTAGCCATGGACGGGCTGCGCGAAGTCATGCCCTACGCGCATGGGCCGTC
GGTGCAGCAAGCTCTCAAGATCGCCACACTCCTGCTCGCCAGAACTACATCCTCATGCTACCAGCTCC
CTGGAGGAGATGAAGAGGCTGGTTGGCGAGATCTATGGGGCCACCACCTCGGCCTTTCACTGCGGGACCG
TGGGCCACTCGGCCGGCCACCCGCGCACGCGGCAACTCCGTGCACCCGGTGCACCCCATCTTGGGCGG
CGCGCTCATCTGGCAACGCCTCGTACCCGCTGTCCGCCGCTCACTTCCCGCCATCGGCACCATCCGG
CCTCCCACTCGTACTCAAGGCGCCCTCCACGCCCGCGCTGCAGCTGGGCAGCGGCTTCCAGCACT
GGGCTGGTCTGCCCTGCCCTGCACCATCTGCCAGATGCCGCCCGCCGCGCACCTGTCCGCTCTCTCCAC
AGCCAACATGGCCGGCTGTCCGCCGAGTCCAAGGACTTGCTCAAG

ACGCGTACGCGGCCGCTCGAG - GFP Tag - GTTTAA



[View online »](#)

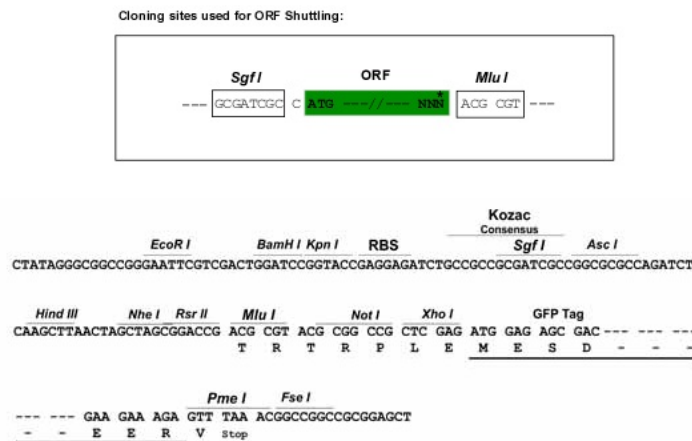
Protein Sequence: >RG208613 representing NM_175747
 Red=Cloning site Green=Tags(s)

MNSDSSSVSSRASSPDMDEMYLRDHHHRHHHHQESRLNSVSVSTQGDMMQKMPGESLSRAGAKAAGESSKY
 KIKKQLSEQDLQQLRLKINGRERKRMHDLNAMDGLREVMPYAHGPSVRKLSKIATLLLARNYILMLTSS
 LEEMKRLVGEIYGGHSAFHCGTVGHSAGHPAHAANSVHPVHPILGGALSSGNASSPLSAASLPAIGTIR
 PPHSLLKAPSTPPALQLGSGFQHWAGLPCPCTICQMPPPPPLSALSANMARLSAESKDLLK

TRTRPLE - GFP Tag - V

Restriction Sites: SgfI-MluI

Cloning Scheme:



ACCN: NM_175747

ORF Size: 816 bp

OTI Disclaimer: The molecular sequence of this clone aligns with the gene accession number as a point of reference only. However, individual transcript sequences of the same gene can differ through naturally occurring variations (e.g. polymorphisms), each with its own valid existence. This clone is substantially in agreement with the reference, but a complete review of all prevailing variants is recommended prior to use. [More info](#)

OTI Annotation: This clone was engineered to express the complete ORF with an expression tag. Expression varies depending on the nature of the gene.

Components: The ORF clone is ion-exchange column purified and shipped in a 2D barcoded Matrix tube containing 10ug of transfection-ready, dried plasmid DNA (reconstitute with 100 ul of water).

Reconstitution Method:

1. Centrifuge at 5,000xg for 5min.
2. Carefully open the tube and add 100ul of sterile water to dissolve the DNA.
3. Close the tube and incubate for 10 minutes at room temperature.
4. Briefly vortex the tube and then do a quick spin (less than 5000xg) to concentrate the liquid at the bottom.
5. Store the suspended plasmid at -20°C. The DNA is stable for at least one year from date of shipping when stored at -20°C.

RefSeq: [NM_175747.2](#), [NP_786923.1](#)

RefSeq Size: 2196 bp

RefSeq ORF: 819 bp

Locus ID: 167826

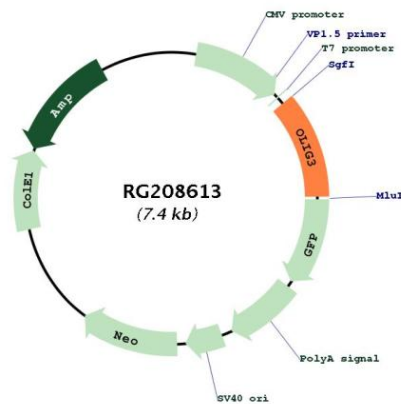
UniProt ID: [Q7RTU3](#)

Cytogenetics: 6q23.3

Protein Families: Transcription Factors

Gene Summary: May determine the distinct specification program of class A neurons in the dorsal part of the spinal cord and suppress specification of class B neurons.[UniProtKB/Swiss-Prot Function]

Product images:



Circular map for RG208613