

Product datasheet for **RG208607**

CA13 (NM_198584) Human Tagged ORF Clone

Product data:

Product Type:	Expression Plasmids
Product Name:	CA13 (NM_198584) Human Tagged ORF Clone
Tag:	TurboGFP
Symbol:	CA13
Synonyms:	CAXIII
Mammalian Cell Selection:	Neomycin
Vector:	pCMV6-AC-GFP (PS100010)
E. coli Selection:	Ampicillin (100 ug/mL)
ORF Nucleotide Sequence:	>RG208607 representing NM_198584 Red=Cloning site Blue=ORF Green=Tags(s)

TTTTGTAATACGACTCACTATAGGGCGGCCGGAATTCGTCGACTGGATCCGGTACCGAGGAGATCTGCC
GCC**CGATCGCC**

ATGTCGAGGCTCAGCTGGGGATACCGCGAGCACAAACGGTCCTATTCAGTGAAGGAATTTTCCCTATTG
CTGATGGTGATCAGCAATCTCCAATTGAGATTAACCAAGAAGTAAATATGACTCTTCCCTCCGACC
ACTTAGTATCAAGTATGACCCAAGCTCAGCTAAAATCATCAGCAACAGCGGCCATTCCTCAATGTTGAC
TTTGATGACACAGAGAACAATCAGTTCTCGTGGTGGTCTCTCACTGGAAGCTACAGGTTACGGCAGG
TTCACCTTCACTGGGGTCCGCTGATGACCACGGCTCCGAGCACATAGTAGAGTGGAGTGAGCTATGCTGC
AGAGCTCCATGTTGTTCACTGGAATTCAGACAAATACCCAGCTTTGTTGAGGCAGCTCATGAACCAGAT
GGACTGGCTGTCTGGGAGTGTTTTACAGATTGGTGAACCTAATTCCTCACTGCAAAAGATTACTGACA
CTTTGGATTCCATTAAAGAAAAGGGTAAACAACTCGATTACAAATTTTGACCTATTGTCTCTGCTTCC
ACCATCTGGGACTACTGGACATATCCTGGTCTCTTACAGTTCCACCTCTTCTTGAGAGTGTACATGG
ATTGTTTTAAAGCAACCTATAACATCAGCTCTCAACAGCTGGCCAAATTCGCAGTCTCCTGTGCACAG
CGGAGGTGAAGCAGCAGCTTTTCTGGTGAAGCAATCACCGCCACCACAGCCTCTAAAGGGCCGAAAGT
GAGAGCCTCTTTCCAT

ACGCGTACGCGGCCGCTCGAG - GFP Tag - GTTTAA



[View online »](#)

Protein Sequence: >RG208607 representing NM_198584
Red=Cloning site Green=Tags(s)

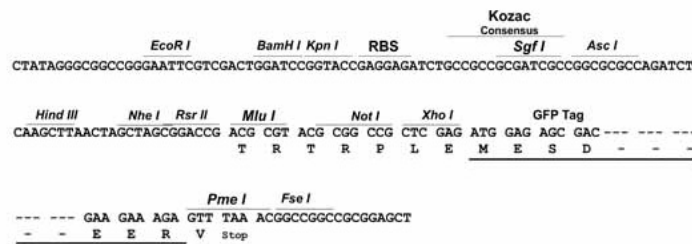
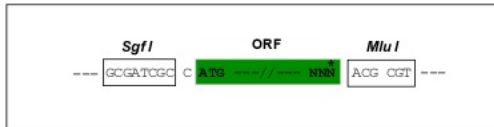
MSRLSWGIREHNGPIHWKEFFPIADGDQSQSPIEIKTKEVKYDSSLRPLSIKYDPSSAKIISNSGHSFNVD
 FDDTENKSVLRGGPLTGSYRLRQVHLHWGSADDHGSEHIVDGVSYAAELHVVHWNWDKYPFVEAAHEPD
 GLAVLGVFLQIGEPNSQLQKITDTLDSIKEKQTRFTNFDLLSLLPPSWDYWTYPGSLTVPPLLLESVTW
 IVLKQPINISSQQLAKFRSLLCTAEGEAAAFVLSNHRPPQPLKGRKVRASFH

TRTRPLE - GFP Tag - V

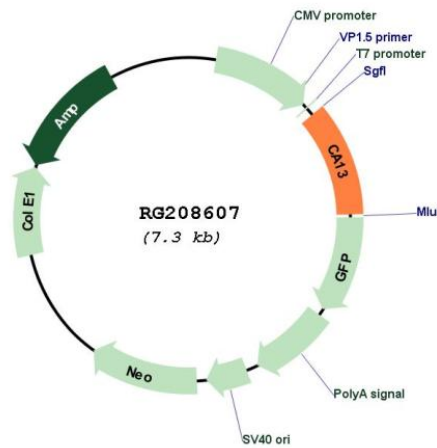
Restriction Sites: SgfI-MluI

Cloning Scheme:

Cloning sites used for ORF Shutting:



Plasmid Map:



ACCN: NM_198584

ORF Size: 786 bp

OTI Disclaimer:	The molecular sequence of this clone aligns with the gene accession number as a point of reference only. However, individual transcript sequences of the same gene can differ through naturally occurring variations (e.g. polymorphisms), each with its own valid existence. This clone is substantially in agreement with the reference, but a complete review of all prevailing variants is recommended prior to use. More info
OTI Annotation:	This clone was engineered to express the complete ORF with an expression tag. Expression varies depending on the nature of the gene.
Components:	The ORF clone is ion-exchange column purified and shipped in a 2D barcoded Matrix tube containing 10ug of transfection-ready, dried plasmid DNA (reconstitute with 100 ul of water).
Reconstitution Method:	<ol style="list-style-type: none">1. Centrifuge at 5,000xg for 5min.2. Carefully open the tube and add 100ul of sterile water to dissolve the DNA.3. Close the tube and incubate for 10 minutes at room temperature.4. Briefly vortex the tube and then do a quick spin (less than 5000xg) to concentrate the liquid at the bottom.5. Store the suspended plasmid at -20°C. The DNA is stable for at least one year from date of shipping when stored at -20°C.
RefSeq:	NM_198584.3
RefSeq Size:	3564 bp
RefSeq ORF:	789 bp
Locus ID:	377677
UniProt ID:	Q8N1Q1
Cytogenetics:	8q21.2
Protein Families:	Druggable Genome
Protein Pathways:	Nitrogen metabolism
Gene Summary:	Carbonic anhydrases (CAs) are a family of zinc metalloenzymes. For background information on the CA family, see MIM 114800.[supplied by OMIM, Mar 2008]