

Product datasheet for **RG208603**

Frizzled homolog 1 (FZD1) (NM_003505) Human Tagged ORF Clone

Product data:

Product Type:	Expression Plasmids
Product Name:	Frizzled homolog 1 (FZD1) (NM_003505) Human Tagged ORF Clone
Tag:	TurboGFP
Symbol:	Frizzled homolog 1
Mammalian Cell Selection:	Neomycin
Vector:	pCMV6-AC-GFP (PS100010)
E. coli Selection:	Ampicillin (100 ug/mL)



[View online »](#)

ORF Nucleotide Sequence:

>RG208603 representing NM_003505
 Red=Cloning site Blue=ORF Green=Tags(s)

TTTTGTAATACGACTCACTATAGGGCGGCCGGGAATTCGTCGACTGGATCCGGTACCGAGGAGATCTGCC
 GCCCGCATCGCC

ATGGCTGAGGAGGAGCGCCTAAGAAGTCCCGGGCCGCCGGCTGGCGGAGCTGGAACTTTGTGCCG
 GGGCGCTCTCGGCCCGCTGGCGGAGGAGGGCAGCGGGGACGCCGGTGGCCGCCGCCCGCCAGTTGA
 CCCCCGCGATTGGCGGCCAGCTGCTGCTGCTTTGGCTGCTGGAGGCTCCGCTGCTGCTGGGGTTC
 CGGGCCAGGCGGGCCAGGGCCAGGGCCCGGGCCGGGGCAGCAACC GCCCGCCGCCCTC
 AGCAGCAACAGAGCGGGCAGCAGTACAACGGCAGCGGGCATCTCCGTCGCCGACCAGCGCTATTGCCA
 GCCCATCTCCATCCGCTGTGCACGGACATCGCGTACAACCAGACCATCATGCCAACCTGCTGGCCAC
 ACGAACAGGAGGACGCGGGCTGGAGGTGCACCAGTTCTACCCTCTAGTAAAGTGCAGTGTCCGCTG
 AGCTCAAGTTCTTCTGTGCTCCATGTACGCGCCCGTGTGCACCCTGCTAGAGCAGGCGCTGCCGCCCTG
 CCGCTCCCTGTGGAGCGCGCGCCAGGGCTGCGAGGCGCTCATGAACAAGTTCGGCTTCCAGTGGCCA
 GACACGCTCAAGTGTGAGAAGTTCGCCGTGCACGGCGCCGGCAGCTGTGCGTGGCCAGAACACGTCGG
 ACAAGGGCACCCGACGCCCTCGCTGCTTCCAGAGTTCTGGACCAGCAACCTCAGCACGGCGGGGAGG
 GCACCGTGGCGGCTTCCCGGGGGCGCCGGCGCGTGGAGCGAGGCAAGTTCTCCTGCCCGCGCCCTC
 AAGGTGCCCTCTACCTCAACTACCACTTCTGGGGGAGAAGGACTGCGGCGCACCTTGTGAGCCAGCA
 AAGTGTATGGGCTCATGTACTTCGGGCCGAGGAGCTGCGCTTCTCGCGCACCTGGATTGGCATTGGTC
 AGTGTGTGCTGCGCCTCACGCTCTTACGGTGTACGTACCTGGTGGACATGCGGCGCTTACGCTAC
 CCGGAGCGGCCATCATCTTCTGTCCGGCTGTTACACGGCCGTGGCCGTGGCTACATCGCCGGCTTCC
 TCCTGGAAGACCGAGTGGTGTGTAATGACAAGTTCGCCGAGGACGGGGCAGCAGCTGTGGCGAGGAC
 CAAGAAGGAGGGCTGCACCATCTTCTCATGATGCTCTACTTCTCAGCATGGCCAGCTCCATCTGGTGG
 GTGATCTGTGCTCACCTGTTCTGGCGGTGGCATGAAGTGGGGCCACGAGGCCATCGAAGCCAACCT
 CACAGTATTTTACCTGGCCGCTGGGCTGTGCCGGCCATCAAGACCATCACCATCCTGGCGCTGGGCCA
 GGTGGACGGCGATGTGCTGAGCGGAGTGTCTTCTGGGGCTTAACAACGTGGACGCGCTGCGTGGCTT
 GTGCTGGCGCCCTTCTGCTGACTGTTTATCGGCACGCTCTTCTGCTGGCCGGCTTGTGCTGCTCT
 TCCGCATCCGACCATCATGAAGCAGATGGCACCAAGACCGAGAAGCTGGAGAAGCTCATGGTGGCAT
 TGGCGTCTCAGCGTGTGTACTGTGCCAGCCACCATCGTCATCGCTGCTACTTCTACGAGCAGGCC
 TTCGGGACCAGTGGGAACGAGCTGGGTGGCCAGAGCTGCAAGAGCTACGCTATCCCCTGCCCTCACC
 TCAGGGCGGGGAGGCGCCCGCCGACCCGCCATGAGCCCGACTTACGGTCTTATGATTAAAGTA
 CCTTATGACGCTGATCGTGGGCATCACGTCGGGCTTCTGGATCTGGTCCGGCAAGACCCTCAACTCTGG
 AGGAAGTCTACACGAGGCTCACCAACAGCAAACAAGGGGAGACTACAGTC

ACGCGTACGCGGCCGCTCGAG – GFP Tag – GTTTAA

Protein Sequence:

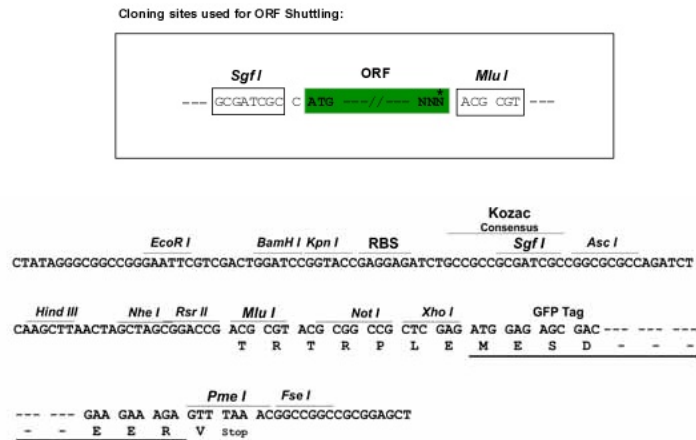
>RG208603 representing NM_003505
 Red=Cloning site Green=Tags(s)

MAEEEAPKKSRAAGGASWELCAGALSARLAEESGDAGRRRPPVDPRLARQLLLLLLWLEAPLLLGV
 RAQAAGQGPQGPGPGQPPPPPPQQQSQQYNGERGISVPDHGYCQPIISIPLECTDIAYNQIMPNLLGH
 TNQEDAGLEVHQFYPLVKVQCSAELKFFLCSMYAPVCTVLEQALPPCRSLCERARQGCEALMNKFGQWP
 DTLKCEKFPVHAGELCVGQNTSDKGTPTPSLLPEFWTSNPQHGGGGHRRGGFPGGAGASERKFS CPRAL
 KVPSYLNHYHFLGEKDCGAPCEPTKVYGLMYFGPEELRF SRTWIGIWSVLCCASTLFTVL TYLVDMRRFSY
 PERPIIFLSGCTAVAVAYIAGFLLEDVVNDKFAEDGARTVAQGTKEGCTILFMMLYFFSMASSIWW
 VILSLTWFLAAGMKWGHEAIEANSQYFHLLAAWAVPAIKTITILALGQVDGDLVSGVCFVGLNNVDLRGF
 VLAGPLFYVLFIGTSFLLAGFVSLFRIRTIMKHDGKTEKLEKLMVRIGVFSVLYTVPATIVIACYFYEQA
 FRDQWERSWAQSQSXYAIPCPHLQAGGGAPHPMPSPDFTFVMIKYLMTLIVGITSGFVIWSGKTLNSW
 RKFYTRLTNSKQGETTV

TRTRPLE – GFP Tag – V

Restriction Sites: SgfI-MluI

Cloning Scheme:



ACCN: NM_003505

ORF Size: 1941 bp

OTI Disclaimer: The molecular sequence of this clone aligns with the gene accession number as a point of reference only. However, individual transcript sequences of the same gene can differ through naturally occurring variations (e.g. polymorphisms), each with its own valid existence. This clone is substantially in agreement with the reference, but a complete review of all prevailing variants is recommended prior to use. [More info](#)

OTI Annotation: This clone was engineered to express the complete ORF with an expression tag. Expression varies depending on the nature of the gene.

Components: The ORF clone is ion-exchange column purified and shipped in a 2D barcoded Matrix tube containing 10ug of transfection-ready, dried plasmid DNA (reconstitute with 100 ul of water).

Reconstitution Method:

1. Centrifuge at 5,000xg for 5min.
2. Carefully open the tube and add 100ul of sterile water to dissolve the DNA.
3. Close the tube and incubate for 10 minutes at room temperature.
4. Briefly vortex the tube and then do a quick spin (less than 5000xg) to concentrate the liquid at the bottom.
5. Store the suspended plasmid at -20°C. The DNA is stable for at least one year from date of shipping when stored at -20°C.

RefSeq: [NM_003505.2](#)

RefSeq Size: 4350 bp

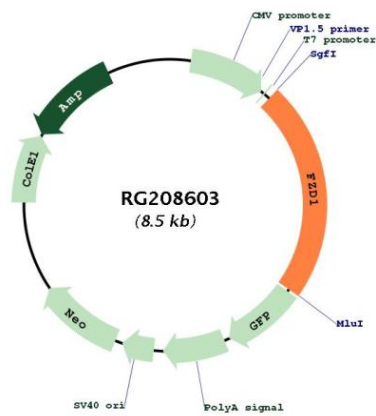
RefSeq ORF: 1944 bp

Locus ID: 8321

UniProt ID: [Q9UP38](#)

Cytogenetics:	7q21.13
Domains:	FRI, Frizzled
Protein Families:	Druggable Genome, GPCR, Transmembrane
Protein Pathways:	Basal cell carcinoma, Colorectal cancer, Melanogenesis, Pathways in cancer, Wnt signaling pathway
Gene Summary:	Members of the 'frizzled' gene family encode 7-transmembrane domain proteins that are receptors for Wnt signaling proteins. The FZD1 protein contains a signal peptide, a cysteine-rich domain in the N-terminal extracellular region, 7 transmembrane domains, and a C-terminal PDZ domain-binding motif. The FZD1 transcript is expressed in various tissues. [provided by RefSeq, Jul 2008]

Product images:



Circular map for RG208603