

Product datasheet for **RG208581**

RAB11FIP3 (NM_014700) Human Tagged ORF Clone

Product data:

Product Type:	Expression Plasmids
Product Name:	RAB11FIP3 (NM_014700) Human Tagged ORF Clone
Tag:	TurboGFP
Symbol:	RAB11FIP3
Synonyms:	CART1; FIP3-Rab11; Rab11-FIP3
Mammalian Cell Selection:	Neomycin
Vector:	pCMV6-AC-GFP (PS100010)
E. coli Selection:	Ampicillin (100 ug/mL)



[View online »](#)

ORF Nucleotide Sequence:

>RG208581 representing NM_014700
 Red=Cloning site Blue=ORF Green=Tags(s)

TTTTGTAATACGACTCACTATAGGGCGGCCGGGAATTCGTCGACTGGATCCGGTACCGAGGAGATCTGCC
 GCC**CGGATCGCC**

ATGGCGTCGGCCCCCGCCGGCCTCGCCCCGGGCTCGGAGCCGCCGGGCCGACCCGGAGCCGGGCGGGC
 CGGACGGGCCGGGGCGGCACAACCTGGCTCCGGGCCCTCGGGAGCTACGCCTCGGAGCGCCGTCGGCGG
 CCCCAGCCCGCAGTCCCCGGGCCTGGATGAGCCTGCGCCCGGGCCGCTGCAGATGGCGGGGCGGTTGG
 AGCGCCGGGCGGCCCGGGGCTGGAGGGAGGCCCGCAGACCCCGGGCCGTCGCCCGCCGCCCGCGCT
 CCGGCCCGGGGGCAGCTTGCAGCCCGACGCCCGGGCCAGGGCCGCGCTCCGAAGCGCCGCTTCC
 AGAACTCGACCCGTTGTTCTCCTGGACTGAGGAGCCCGAGGAGTGTGCCCGCGAGCTGCCCGGAGAGC
 GCGCCTTCCGCTTGACGGGTCCAGCAGCAGCCACCGAGCGGGGGCAGGTCGACGCTTCTCTCCCT
 TCCCCGCGCCACGGCGGGCAGCTGGCGCTGGAGCAAGGTCCCGGTCCCGCCGACGCCCTCGGACCT
 CAGCCAGACCCACCCCTCCGAGCGAGCCGTGGGGAGTCAGGAGGACGGCCCCGCTCCGAGCCGTG
 TTCGATGCCCTGGACGGGATGGGGACGTTTCGTCCGCATCGAGGACTTCATCCAGTTTGTACGGTCT
 ACGGGGACAGCAGGTGAAGGACTTAACTAAGTACTTGGATCCCAGTGGGCTCGGCGTGATCAGTTTGA
 AGACTTCTACCAAGGATCACAGCCATCAGAAACGGAGATCCTGATGGCCAGTGCTACGGTGGTGTGCT
 TCTGCCAAGATGAGGAGCCCTGGCCTGCCCGGACGAGTTTCGATGACTTCGTACCTATGAGGCCAACG
 AGGTGACGGACAGCGCTACATGGGCTCCGAGAGCACCTACAGTGAAGTGTGAGACCTTACCGGACGAGGA
 CACCAGCACCTGGTGCACCTGAGTGCAACCTGAAGGGGACGACAGTCCCGGGCGCTCGGCCGTG
 CCCTCTGAGTGCCTGGAGCCATGGAGGAGCCGACCATGGTGCCTGCTGCTGCCAGGCAGCCCTC
 ACCCCATGGCCAGTCTGTCATCAGGTGATCGGGGGCAGGAGCACTTTGAGGACTACGGTGAAGGCAG
 TGAGGCGGAGTGTCCCGAGAGCCCTATGCAACGGGCAGCTGGGCTGCAGTGACCCCGCTTTCCTCACG
 CCCAGTCCGACAAAGCGCTCTCCAGCAAGAAGTGGCAAGGTACCTGCACAGTCAGGGCCCTGACCA
 TGGAGGCCCTGGAGACCCCTCCCCGAGCTCATGGAGGGCCAGAGGAGCATTGCTGACAAGTTGT
 CTTCTGGAAAGGCGTGTGCTGGAGCTGGAAAAGGACACGGCAGCCACCGGTGAGCAACACAGCCGCTG
 AGGCAGGAGAACCTGCAGCTGGTGCACAGAGCAACGCCCTGGAGGAGCAGCTGAAGGAGCAGGAGCTGA
 GAGCCTGCGAGATGGTCTGGAAGAGACCCGGCGTCAGAAGGAGCTCCTGTGCAAGATGGAGAGGGAGAA
 GAGCATTGAGATCGAAGACCTGCAGACCAGGCTACAGCAACTGGACGAGGAGAACAGTGAACCTCCGTCC
 TGCACGCCCTGTCTGAAGCCAACATTGAGCGTCTGGAGGAGGAGAAGCAGAAGCTGTTGGATGAGATAG
 AGTCGCTGACGCTGCGGCTCAGTGAAGAGCAGGAGAACAAGAGGAGAATGGGGGACAGGCTGAGTACGA
 GAGGCACCAAGTCCAGAGGGACAAGGAGGCCACCCAGGAGCTGATCGAGGACCTCCGAAAGCAGCTGGAG
 CACCTGCAGCTCCTCAAGCTGGAGGCCGAGCAGCGGGGGCCGAGCAGCAGCATGGGCTGCAGGAGT
 ACCACAGCCGCGCCCGGGAGAGCGAGCTGGAGCAGGAGTCCGCAGGCTGAAGCAGGACAACCGCAACCT
 GAAGGAGCAGAACGAGGAGCTGAACGGGCAGATCATTACCCTCAGCATCCAGGGCCCAAGAGCCTTTC
 TCCACAGCCTTCTCTGAGTCCCTGGCTGCAGAGATCAGTCCGTCTCCGAGATGAGTCCATGGAGGCGA
 TTCAGAAGCAGGAGGAGATCAACTCCGCCTGCAGGACTACATCGACAGGATCATCGTGGCCATCATGGA
 GACCAACCCGTCCATCCTGGAGGTCAAG

ACGCGTACGCGGGCCGCTCGAG – GFP Tag – GTTTAA

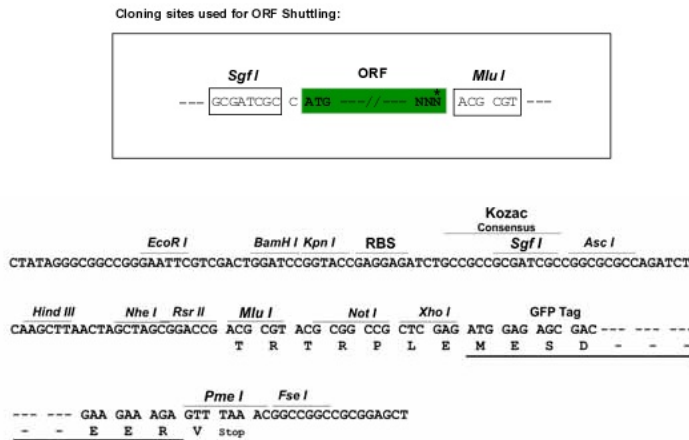
Protein Sequence: >RG208581 representing NM_014700
 Red=Cloning site Green=Tags(s)

MASAPPASPPGSEPPGPDPEPGPDGPGAAQLAPGPAELRLGAPVGGPDPQSPGLDEPAPGAAADGGARW
 SAGPAPGLEGGPRDPGPSAPPPRSGPRGQLASPDAPGPGPRSEAPLPELDPLFSWTEEPEECGPASCPE
 APFRLQGSSSSHRARGEVDVFSFPAPTAGELALEQPGSPPQPSDLSTHPLPSEPVGSQEDGPRLRVAV
 FDALDGDGDGFVRIEDFIQFATVYGAEQVKDLTKYLDPSGLGVI SFEDFYQGITAIRNGDPDQCYYGVA
 SAQDEEPLACPDEFDDFVTYEANEVTD SAYMGSESTYSECETFTDEDSTLVHPELQPEGDADSAGGSVA
 PSECLDAMEEPDHGALLLLPGRPHPHGQSVITVIGGEEHFEDYGESEAE LSPETLCNGQLGCSDPAFLT
 PSPTKRLSSKKVARYLHQSGAL TMEALDPSELMEGPEEDIADKVVFLERRVLELEKDTAATGEQHSRL
 RQENLQLVHRANALEEQ LKEQELRACEMVLEETRRQKELLCKMEREKSIEIENLQTRLQQLDEENSELRS
 CTPCLKANIERLEEEKQKLLDEIESLTLRLSEEQENKRRMGDRLSHERHQFQRDKEATQELIEDLRKQLE
 HLQLLLEAEQRRGRSSMGLQ EYHSRARESELEQEVRRLLKQDNRLKEQNEELNGQIITLSIQGAKSLF
 STAFSESAAEISSVSRDELMEAIQKQEEINFRLQDYIDRIIVAIMETNPSILEVK

TRTRPLE - GFP Tag - V

Restriction Sites: SgfI-MluI

Cloning Scheme:

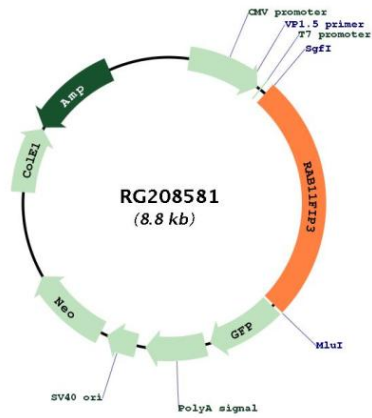


ACCN: NM_014700

ORF Size: 2268 bp

OTI Disclaimer:	<p>Due to the inherent nature of this plasmid, standard methods to replicate additional amounts of DNA in E. coli are highly likely to result in mutations and/or rearrangements. Therefore, OriGene does not guarantee the capability to replicate this plasmid DNA. Additional amounts of DNA can be purchased from OriGene with batch-specific, full-sequence verification at a reduced cost. Please contact our customer care team at custsupport@origene.com or by calling 301.340.3188 option 3 for pricing and delivery.</p> <p>The molecular sequence of this clone aligns with the gene accession number as a point of reference only. However, individual transcript sequences of the same gene can differ through naturally occurring variations (e.g. polymorphisms), each with its own valid existence. This clone is substantially in agreement with the reference, but a complete review of all prevailing variants is recommended prior to use. More info</p>
OTI Annotation:	<p>This clone was engineered to express the complete ORF with an expression tag. Expression varies depending on the nature of the gene.</p>
Components:	<p>The ORF clone is ion-exchange column purified and shipped in a 2D barcoded Matrix tube containing 10ug of transfection-ready, dried plasmid DNA (reconstitute with 100 ul of water).</p>
Reconstitution Method:	<ol style="list-style-type: none">1. Centrifuge at 5,000xg for 5min.2. Carefully open the tube and add 100ul of sterile water to dissolve the DNA.3. Close the tube and incubate for 10 minutes at room temperature.4. Briefly vortex the tube and then do a quick spin (less than 5000xg) to concentrate the liquid at the bottom.5. Store the suspended plasmid at -20°C. The DNA is stable for at least one year from date of shipping when stored at -20°C.
RefSeq:	NM_014700.4
RefSeq Size:	4273 bp
RefSeq ORF:	2271 bp
Locus ID:	9727
UniProt ID:	O75154
Cytogenetics:	16p13.3
Protein Pathways:	Endocytosis
Gene Summary:	<p>Proteins of the large Rab GTPase family (see RAB1A; MIM 179508) have regulatory roles in the formation, targeting, and fusion of intracellular transport vesicles. RAB11FIP3 is one of many proteins that interact with and regulate Rab GTPases (Hales et al., 2001 [PubMed 11495908]). [supplied by OMIM, Mar 2008]</p>

Product images:



Circular map for RG208581