

Product datasheet for **RG208565**

FAM83A (NM_032899) Human Tagged ORF Clone

Product data:

Product Type:	Expression Plasmids
Product Name:	FAM83A (NM_032899) Human Tagged ORF Clone
Tag:	TurboGFP
Symbol:	FAM83A
Synonyms:	BJ-TSA-9
Mammalian Cell Selection:	Neomycin
Vector:	pCMV6-AC-GFP (PS100010)
E. coli Selection:	Ampicillin (100 ug/mL)
ORF Nucleotide Sequence:	>RG208565 representing NM_032899 Red=Cloning site Blue=ORF Green=Tags(s)

TTTTGTAATACGACTCACTATAGGGCGGCCGGAATTCGTCGACTGGATCCGGTACCGAGGAGATCTGCC
GCC**CGATCGCC**

ATGAGCCGGTCAAGGCACCTGGGCAAAATCCGGAAGCGTCTGGAAGATGTCAAGAGCCAGTGGTCCGGC
CAGCCAGGGCTGACTTTAGTGACAACGAGAGTGCCCGGCTGGCCACGGACGCCCTCTGGATGGGGTTC
TGAAGCCTACTGGCGGTGCTCAGCCAGGAAGGCGAGGTGGACTTCTGTCTCGGTGGAGGCCAGTAC
ATCCAGGCCAGGCCAGGAGCCCCGTGTCCCCAGACACCCTGGGAGGGCGGAAGCAGGCCCTAAGG
GACTGGACTCCAGCTCCCTACAGTCCGGCACCTACTTCCCTGTGGCCTCAGAGGGCAGCGAGCCGGCCCT
ACTGCACAGCTGGGCCTCAGCTGAGAAGCCCTACCTGAAGGAAAAATCCAGCGCCACTGTGTACTTCCAG
ACCGTCAAGCACAAACATCAGAGACCTCGTCCGCCGCTGCATCACCCGACTAGCCAGGTCTGGTCA
TCTGTATGGATGTGTTACGGATGTGGAGATCTTCTGTGACATTCTAGAGGCAGCCAACAAGCGTGGGGT
GTTCTGTTGTGTGCTCCTGGACCAGGGAGGTGTGAAGCTCTCCAGGAGATGTGTGACAAAGTCCAGATC
TCTGACAGTCACCTCAAGAACATTTCCATCCGGAGTGTGGAAGGAGAGATATACTGTGCCAAGTCCAGGCA
GGAAATTCGCTGGCCAAATCCGGGAGAAGTTCATCATCTCGGACTGGAGATTTGTCTGTCTGGATCTTA
CAGCTTACCTGGCTCTGCGGACAGTGCACCCGAACATCCTCTCAAGTTCACAGGCCAGGCGGTGGAG
CTGTTTGACGAGGAGTTCCGCCACCTCTACGCCCTCTCAAGCTGTGATGGGCCTGAAGTCCCCGCGGC
TGGTTCGCCCCGTCCCGCCGGAGCAGCCCCGGCCAATGGCCGCTTAGCAGCAGCAGTGGCTCCGCCAG
TGACCGCACGTCCTCAACCCCTTCAGCGGCCGCTCGGCAGGCAGCCACCCCGGTACCCGAAGTGTGTC
CGCTTTCAGGGCCCTGTAGCCCCGCGGCCACACCCGCTCCACCGCCCCGGTTCAGCCCCACCAAG
GCCCTTGGGGAGCCCCGAGTCCCCAGGCCACCTCTCCCCGCGGCCACGACGGCCCCGCCGCTGT
CTACAGCAACCTGGGGCCTACAGGCCACGGCTGCAGCTGGAGCAGCTGGGCCTGTTGCCGAGGCTG
ACTCAACCTGGAGGCCCTTCTGCAGGCTCCCTCACTT

ACGCGTACGCGGCCGCTCGAG - GFP Tag - GTTTAA



[View online »](#)

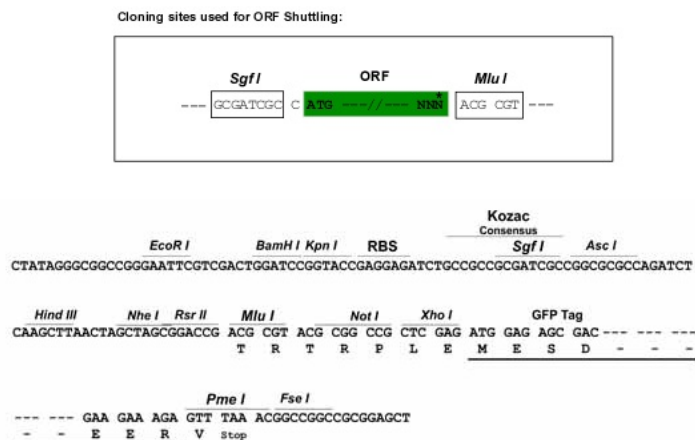
Protein Sequence: >RG208565 representing NM_032899
Red=Cloning site Green=Tags(s)

MSRSRHLGKIRKRLLEDVKSQWVRPARADFSDNESARLATDALLDGGSEAYWRVLSQEGEVDLSSVEAQY
 IQAQAREPPCPPDTLGGAEAGPKGLDSSSLQSGTYFPVASEGSEPALHWSASAEKPYLKEKSSATVYFQ
 TVKHNNIRDLVRRICITRTSQVLVILMDVFTDVEIFCDILEAANKRGVFCVLLDQGGVKLFQEMCDKVQI
 SDSHLKNISIRSVGEIYCAKSGRKFAGQIREKFIISDWRFVLSGSYSFTWLCGHVHRNLSKFTGQAVE
 LFDEEFRHLYASSKPVMLKSPRLVAPVPPGAAPANGRLSSSSGSASDRTSSNPFSGRSAGSHPGTRSVS
 ASSGPCSPAAPHPPPPRFPQPHQGPWGPSPQAHLSRPHDGPAAVYSNLGAYRPTRLQLEQLGLVPRL
 TPTWRPFLQASPHF

TRTRPLE - GFP Tag - V

Restriction Sites: SgfI-MluI

Cloning Scheme:



ACCN: NM_032899

ORF Size: 1302 bp

OTI Disclaimer: The molecular sequence of this clone aligns with the gene accession number as a point of reference only. However, individual transcript sequences of the same gene can differ through naturally occurring variations (e.g. polymorphisms), each with its own valid existence. This clone is substantially in agreement with the reference, but a complete review of all prevailing variants is recommended prior to use. [More info](#)

OTI Annotation: This clone was engineered to express the complete ORF with an expression tag. Expression varies depending on the nature of the gene.

Components: The ORF clone is ion-exchange column purified and shipped in a 2D barcoded Matrix tube containing 10ug of transfection-ready, dried plasmid DNA (reconstitute with 100 ul of water).

Reconstitution Method:

1. Centrifuge at 5,000xg for 5min.
2. Carefully open the tube and add 100ul of sterile water to dissolve the DNA.
3. Close the tube and incubate for 10 minutes at room temperature.
4. Briefly vortex the tube and then do a quick spin (less than 5000xg) to concentrate the liquid at the bottom.
5. Store the suspended plasmid at -20°C. The DNA is stable for at least one year from date of shipping when stored at -20°C.

RefSeq: [NM_032899.6](#), [NP_116288.2](#)

RefSeq Size: 2946 bp

RefSeq ORF: 1305 bp

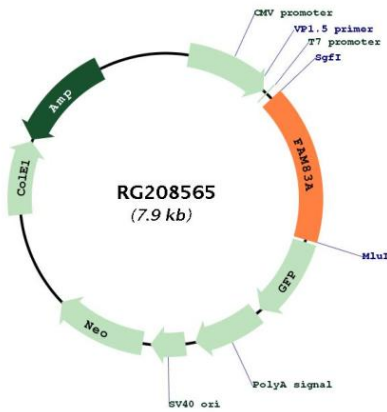
Locus ID: 84985

UniProt ID: [Q86UY5](#)

Cytogenetics: 8q24.13

Gene Summary: Probable proto-oncogene that functions in the epidermal growth factor receptor/EGFR signaling pathway. Activates both RAS/MAPK and PI3K/AKT/TOR signaling cascades downstream of EGFR. Required for the RAS/MAPK signaling cascade activation upon EGFR stimulation, it also activates both signaling cascades independently of EGFR activation. [UniProtKB/Swiss-Prot Function]

Product images:



Circular map for RG208565