

## Product datasheet for **RG208557**

### CD163 (NM\_004244) Human Tagged ORF Clone

#### Product data:

Product Type:	Expression Plasmids
Product Name:	CD163 (NM_004244) Human Tagged ORF Clone
Tag:	TurboGFP
Symbol:	CD163
Synonyms:	M130; MM130; SCARI1
Mammalian Cell Selection:	Neomycin
Vector:	pCMV6-AC-GFP (PS100010)
E. coli Selection:	Ampicillin (100 ug/mL)
ORF Nucleotide Sequence:	>RG208557 representing NM_004244 Red=Cloning site Blue=ORF Green=Tags(s)

TTTTGTAATACGACTCACTATAGGGCGGCCGGAATTCGTCGACTGGATCCGGTACCGAGGAGATCTGCC  
GCC**CGATCGCC**

ATGAGCAAACCTCAGAATGGTGCTACTTGAAGACTCTGGATCTGCTGACTTCAGAAGACATTTTGTCAACT  
TGAGTCCCTTCACCATTACTGTGGTCTTACTTCTCAGTGCCTGTTTTGTCACCAGTTCTCTTGGAGGAAC  
AGACAAGGAGCTGAGGCTAGTGGATGGTAAAACAAGTGTAGCGGGAGAGTGAAGTGAAGTCCAGGAG  
GAGTGGGAACGGTGTGTAATAATGGCTGGAGCATGGAAGCGGTCTCTGTGATTTGTAACCAGCTGGGAT  
GTCCAACCTGCTATCAAAGCCCTGGATGGGCTAATTCAGTGCAGTTCTGGACGCAATTTGGATGGATCA  
TGTTTTCTGTCGTGGAAATGAGTCAGCTCTTTGGGATTGCAAACATGATGGATGGGAAAGCATAGTAAC  
TGTAACCAACAAGATGCTGGAGTGACCTGCTCAGATGGATCCAATTTGAAAATGAGGCTGACCGGTG  
GAGGGAATATGTGTTCTGGAAGAATAGAGATCAAATCCAAGGACGGTGGGAAACAGTGTGTGATGATAA  
CTTCAACATAGATCATGCATCTGTCAATTTGTAGACAACCTGAATGTGGAAGTGTGTGATGATGATAA  
TCATCTAATTTGGAGAAGGCTCTGGACCAATCTGTTTGTGATGATCTTATGCAACGGAATGAGTCAG  
CTCTCTGGAACGCAAACATCAAGGATGGGAAAGCATAACTGTGATCATGCTGAGGATGCTGGAGTGAT  
TTGCTCAAAGGGAGCAGATCTGAGCCTGAGACTGGTAGATGGAGTCACTGAATGTTCCAGGAAGATTAGAA  
GTGAGATTTCAAAGGAGAATGGGGACAATATGTGATGACGGCTGGGACAGTTACGATGCTGCTGTGGCAT  
GCAAGCAACTGGGATGTCCAACCTGCCGTACAGCCATTGGTTCGAGTTAACGCCAGTAAGGGATTTGGACA  
CATCTGGCTTGACAGCGTTTCTTGCCAGGGACATGAACCTGCTGTCTGGCAATGTAACACCATGAATGG  
GGAAAGCATTATTGCAATCACAATGAAGATGCTGGCGTGACATGTTCTGATGGATCAGATCTGGAGCTAA  
GACTTAGAGGTGGAGGCAGCCGCTGTGCTGGGACAGTTGAGGTGGAGATTGAGAGACTGTTAGGGAAGGT  
GTGTGACAGAGGCTGGGACTGAAAGAAGCTGATGTGGTTTGCAGGCAGCTGGGATGTGGATCTGCACTC  
AAAACATCTTATCAAGTGTACTCCAAAATCCAGGCAACAAACACATGGCTGTTTCTAAGTAGCTGTAACG  
GAAATGAAACTTCTCTTTGGGACTGCAAGAAGTGGCAATGGGGTGGACTTACCTGTGATCACTATGAAGA  
AGCCAAAATTACCTGCTCAGCCACAGGGAACCCAGACTGGTTGGAGGGACATTCCTGTTCTGGACGT



[View online »](#)

GTTGAAGTGAAGCATGGTGACACGTGGGGCTCCATCTGTGATTCCGACTTCTCTCTGGAAGCTGCCAGCG  
TTCTATGCAGGGAATTACAGTGTGGCACAGTTGTCTCTATCCTGGGGGAGCTCACTTTGGAGAGGGAAA  
TGGACAGATCTGGGCTGAAGAATTCAGTGTGAGGGACATGAGTCCCATCTTCACTCTGCCAGTAGCA  
CCCCGCCAGAAGGAACCTGTAGCCACAGCAGGGATGTTGGAGTAGTCTGCTCAAGATACACAGAAATTC  
GCTTGGTGAATGGCAAGACCCCGTGTGAGGGCAGAGTGGAGCTCAAACGCTTGGTGCCTGGGGATCCCT  
CTGTAACCTCTCACTGGGACATAGAAGATGCCATGTTCTTTGCCAGCAGCTTAAATGTGGAGTTGCCCTT  
TCTACCCAGGAGGAGCACGTTTTGGAAAAGGAAATGGTCAGATCTGGAGGCATATGTTTCACTGCACTG  
GGACTGAGCAGCACATGGGAGATTGTCCTGTAACCTGCTCTAGGTGCTTATTATGTCCTTCAGAGCAAGT  
GGCCTCTGTAATCTGCTCAGGAAACCAGTCCCAAACACTGTCCTCGTGAATTCATCGTCTTTGGGCCCA  
ACAAGGCCTACCATCCAGAAGAAAGTGTGTGGCCTGCATAGAGAGTGGTCAACTTCGCTGGTAAATG  
GAGGAGTGTGCTGGGAGAGTAGAGATCTATCATGAGGGCTCCTGGGGCACCATCTGTGATGACAG  
CTGGGACCTGAGTGTGCCACGTGTTTGCAGACAGCTGGGCTGTGGAGAGGCCAATTAATGCCACTGGT  
TCTGCTCATTTTGGGGAAGGAACAGGGCCCATCTGGCTGGATGAGATGAAATGCAATGGAAAAGAATCCC  
GCATTTGGCAGTCCATTACACGGCTGGGGCAGCAAATTCAGGCACAAGGAGGATGCGGGAGTTAT  
CTGCTCAGAATTCATGTCTCTGAGACTGACCAGTGAAGCCAGCAGAGAGGCCTGTGCAGGGCGTCTGGAA  
GTTTTTTACAATGGAGCTTGGGGCACTGTTGGCAAGAGTAGCATGTCTGAAACCACTGTGGGTGTGGTGT  
GCAGGCAGCTGGGCTGTGCAGACAAAGGAAAAATCAACCCTGCATCTTTAGACAAGGCCATGTCCATTCC  
CATGTGGGTGGACAATGTTCAAGTGTCCAAAAGGACCTGACACGCTGTGGCAGTGGCCATCATCTCCATGG  
GAGAAGAGACTGGCCAGCCCTCGGAGGAGACCTGGATCACATGTGACAACAAGATAAGACTTCAGGAAG  
GACCCACTTCTGTTCTGGACGTGTGGAGATCTGGCATGGAGGTTCTGGGGGACAGTGTGTGATGACTC  
TTGGGACTTGGACGATGCTCAGGTGGTGTGTCAACAACCTGGCTGTGGTCCAGCTTTGAAAGCATTCAA  
GAAGCAGAGTTTGGTCAGGGGACTGGACCGATATGGCTCAATGAAGTGAAGTCAAAGGGAATGAGTCTT  
CCTTGTGGGATTGTCCTGCCAGACGCTGGGGCCATAGTGAGTGTGGGCACAAGGAAGACGCTGCAGTGAA  
TTGCACAGATATTTCAAGTGCAGAAAACCCACAAAAGCCACAACAGGTCGCTCATCCCGTCAGTCATCC  
TTTATTGCAGTCGGGATCCTTGGGGTGTCTGTTGGCCATTTTCGTGCGATTATTCTTCTTACTAAAA  
AGCGAAGACAGAGACAGCGGCTTGCAGTTTCTCAAGAGGAGAGAACTTAGTCCACCAAATTCATACCG  
GGAGATGAATTTGCTGAATGCAGATGATCTGGACCTAATGAATTCCTCAGAAAATTCATGAGTCA  
GCTGATTTCAAGTGTGCTGAACTAATTTCTGTGCTAAATTTCTCTATTTCTGGAATGGAAAAGGAGG  
CCATTCTGAGCCACACTGAAAAGGAAAATGGGAATTTA

AGCGGACCGACGCGTACGCGGCCGCTCGAG - GFP Tag - GTTTAA

**Protein Sequence:** >RG208557 representing NM\_004244  
 Red=Cloning site Green=Tags(s)

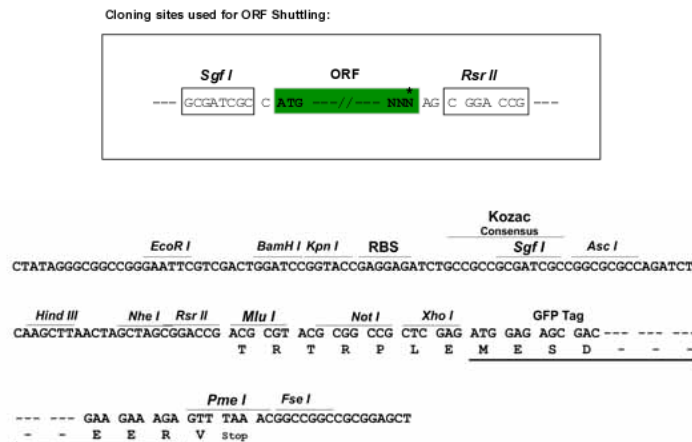
```

MSKLRMVLLEDSGSADFRRHFNLSPTTITVVLVLLSACFVTSSLGGTDKELRLVDGENKCSGRVEVKVQE
EWGTVCNNGWSMEAVSVICNLGCPTAIKAPGWANSSAGSGRIWMDHVSCRGNESALWDCKHDGKHSN
CTHQQDAGVTCSDGSNLEMRLTRGGMCSGRIEIKFQGRWGTVCDDNFNIDHASVICRQLECGSAVSFSG
SSNFGEVSGPIWFDDLICNGNESALWNCKHQGWGKHNCDAEDAGVICSKGADLSLRLVDGVTECSGRLE
VRFQGEWGTICDDGWDSYDAAVACKQLGCPTAVTAIGRVNASKGFGHIWLDVSCQGHPEAVWQCKHHEW
GKHYCNHNEDAGVTCSDGSDLELRLRGGGSRCACTVEVEIQRLLGKVCDRGWGLKEADVCRQLGCGSAL
KTSYQVYSKIQATNTWFLSSCNGNETSLWDCKNWQWGLTCDHYEEAKITCSAHREPRLVGGDIPCSGR
VEVKHGDWTWGSICSDSFLSLEAASVLCRELQCGTVVSIILGGAHFGEGNGQIWAEEFQCEGHESHLSPVA
PRPEGTCSHRDVGVCVSRYTEIRLVNGKTPCEGRVELKTLGAWGSLCNSHWDIEDAHVLCQQLKCGVAL
STPGGARFGKNGQIWRHMFHCTGTEQHMGDPCVTALGASLCPSEQVASVICSGNQSQTLSSCNSSSLGP
TRPTIPEESAVACIESGQLRLVNGGRCAGRVEIYHEGSWGTICDDSWLSDAHVVCRLGCGEAINATG
SAHFGEVGTPIWLDKEMKCNKESRIWQCHSHGWGQONCRHKEDAGVICSEFMSLRLTSEASREACAGRL
VFYNGAWGTVGKSSMSETTVGVVCRQLGCADKGINPASLKDAMSIPMWVDNVQCPKGPDTLWQCPSSPW
EKRLASPSEETWITCDNKIRLQEGPTSCSGRVEIWHGGSWGTVCDDSWLDDAQVVCQQLGCGPALKAFK
EAEFGQGTGPIWLVNEVKCKGNESLWDCPARRWGHSECGHKEDAANCTDISVQKTPQKATTGRSSRQSS
FIAVGI LGVLLAIFVALFFLTKRRRQRQLAVSSRGENLVHQIQYREMNCLNADDLDMNSSENSHES
ADFSAAELISVSKFLPISGMEKEAILLSHTEKENGNL
  
```

SGPTRRRLE - GFP Tag - V

**Restriction Sites:** SgfI-RsrII

**Cloning Scheme:**

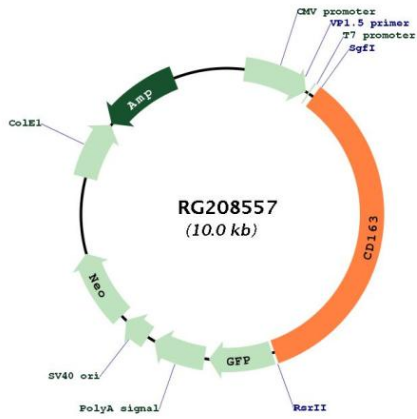


**ACCN:** NM\_004244

**ORF Size:** 3468 bp

<b>OTI Disclaimer:</b>	The molecular sequence of this clone aligns with the gene accession number as a point of reference only. However, individual transcript sequences of the same gene can differ through naturally occurring variations (e.g. polymorphisms), each with its own valid existence. This clone is substantially in agreement with the reference, but a complete review of all prevailing variants is recommended prior to use. <a href="#">More info</a>
<b>OTI Annotation:</b>	This clone was engineered to express the complete ORF with an expression tag. Expression varies depending on the nature of the gene.
<b>Components:</b>	The ORF clone is ion-exchange column purified and shipped in a 2D barcoded Matrix tube containing 10ug of transfection-ready, dried plasmid DNA (reconstitute with 100 ul of water).
<b>Reconstitution Method:</b>	<ol style="list-style-type: none"> <li>1. Centrifuge at 5,000xg for 5min.</li> <li>2. Carefully open the tube and add 100ul of sterile water to dissolve the DNA.</li> <li>3. Close the tube and incubate for 10 minutes at room temperature.</li> <li>4. Briefly vortex the tube and then do a quick spin (less than 5000xg) to concentrate the liquid at the bottom.</li> <li>5. Store the suspended plasmid at -20°C. The DNA is stable for at least one year from date of shipping when stored at -20°C.</li> </ol>
<b>RefSeq:</b>	<a href="#">NM_004244.4</a>
<b>RefSeq Size:</b>	3806 bp
<b>RefSeq ORF:</b>	3471 bp
<b>Locus ID:</b>	9332
<b>UniProt ID:</b>	<a href="#">Q86VB7</a>
<b>Cytogenetics:</b>	12p13.31
<b>Domains:</b>	SR
<b>Protein Families:</b>	Druggable Genome, Secreted Protein, Transmembrane
<b>Gene Summary:</b>	The protein encoded by this gene is a member of the scavenger receptor cysteine-rich (SRCR) superfamily, and is exclusively expressed in monocytes and macrophages. It functions as an acute phase-regulated receptor involved in the clearance and endocytosis of hemoglobin/haptoglobin complexes by macrophages, and may thereby protect tissues from free hemoglobin-mediated oxidative damage. This protein may also function as an innate immune sensor for bacteria and inducer of local inflammation. Alternatively spliced transcript variants encoding different isoforms have been described for this gene. [provided by RefSeq, Aug 2011]

Product images:



Circular map for RG208557