

Product datasheet for **RG208534**

SMARCC1 (NM_003074) Human Tagged ORF Clone

Product data:

Product Type:	Expression Plasmids
Product Name:	SMARCC1 (NM_003074) Human Tagged ORF Clone
Tag:	TurboGFP
Symbol:	SMARCC1
Synonyms:	BAF155; CRACC1; Rsc8; SRG3; SWI3
Mammalian Cell Selection:	Neomycin
Vector:	pCMV6-AC-GFP (PS100010)
E. coli Selection:	Ampicillin (100 ug/mL)
ORF Nucleotide Sequence:	>RG208534 representing NM_003074 Red=Cloning site Blue=ORF Green=Tags(s)

TTTTGTAATACGACTCACTATAGGGCGGCCGGGAATTCGTCGACTGGATCCGGTACCGAGGAGATCTGCC
GCC**CGATCGCC**

ATGGCCGACGCGGGCGGGCGGGCGGGGACAGCGGTAGGCGCCACGGGCTCGGGATTGCGGCGG
CAGCCGACGGCTAGCTGTTTATCGACGGAAGGATGGGGGCCCGCCACCAAGTTTGGGAGAGCCCGGA
GACGGTGTCCAGCTGGATTCGGTGCGGGTCTGGCTGGCAAGCACTACAAGAAGTATGTTTCATGCGGAT
GCTCCTACCAATAAAACTGGCTGGGCTGGTGGTGCAGCTTCTTCAGTCCAGGAAGATGCCTTTGGGA
AGCATGTCACCAACCCGGCTTACCAAACTCCCTGCAAAGTGTTCATGGATTTCAAAGCTGGAGCGC
CTTATGTCACATTCTGGGGCTGCTTACAAGTATAAAAAAGAAGGATGGCGGAGTTTGACCTACAG
AACCCATCTCGAATGGATCGTAATGTGGAATGTTTATGAACATTGAAAAACATTGGTGCAGAACAATT
GTTTGACCAGACCAACATCTACCTCATTCCAGACATTGATCTGAAGTTGGCTAACAAATTGAAAGATAT
CATCAAACGACATCAGGGAACATTTACGGATGAGAAGTCAAAGCTTCCACCACATTTACCCATATTCT
TCCTCACAAGACGATGAAGAATGGTTGAGACCGGTGATGAGAAAAGAGAAGCAAGTGTAGTGCATTGGG
GCTTTTACCCAGACAGCTATGATACTTGGGTCCATAGTAATGATGTTGATGCTGAAATGAAGATCCACC
AATTCAGAAAAACCATGGAAGGTTTCATGTGAAATGGATTTTGGACACTGATATTTCAATGAATGGATG
AATGAGGAGGATTATGAGGTGGATGAAAAAGGAAGCCTGTGAGTTTTTCGTCAGCGGATTTCAACCAAGA
ATGAAGAGCCAGTCAGAAGTCCAGAAAAGAGATAGAAAAGCATCAGCTAATGCTCGAAAAGAGGAAACA
TTCGCCTTCGCCTCCCTCCGACACCAACAGAATCACGGAAGAAGAGTGGGAAGAAGGCAAGCTAGC
CTTTATGGGAAGCGCAGAAGTCAGAAAAGGAAGATGAGCAAGAAGATCTAACCAAGGATATGGAAGACC
CAACACCTGTACCAATATAGAAGAAGTAGTACTTCCCAAAAATGTGAACCTAAAGAAAGATAGTAAAA
TACACCTGTTAAAGGAGGAAGTGTAGCGGATCTAGATGAGCAGGATGAAGAAACAGTCACAGCAGGAGGA
AAGGAAGATGAAGATCCTGCCAAAGGTGATCAGAGTCGATCAGTTGACCTTGGGGAAGATAATGTGACAG
AGCAGACCAATCACATTATTTCCTAGTTATGCATCATGTTTATTGATTATAACTGTATTCATGTGATTGA
ACGGCGTCTCTCCTGAGTTCTCAATGAAAAACAAATCCAAGACTCCAGAAATATACTTGGCATAT



[View online >](#)

```
CGAAATTTTATGATTGACACGTATCGTCTAAACCCCAAGAGTATTTAACTAGCACTGCTTGTCCGGAGGA
ACTTGACTGGAGATGTGTGTGCTGTGATGAGGGTCCATGCCTTTTATAGAGCAGTGGGACTCGTTAATTA
CCAAGTTGACCCGGAAAGTAGACCCATGGCAATGGGACCTCCTCCTACTCCTCATTTTAAATGATTAGCT
GATACCCCTCTGGGCTTGTGCCTCTGCATCTTCGATCACCTCAGGTTCTGTGCTCAACAGATGCTAA
ATTTTCTGAGAAAAACAAGGAAAAACAGTTGATTTGCAGAACTTTGGTCTCCGTAAGTACTGACATTTACTC
CAAGAAAAATTAGCAAAGAGTAAAGGTGCTAGTGTGGAAGAGAATGGACTGAACAGGAGACCCCTCTA
CTCCTGGAGGCCCTGGAGATGTACAAGGATGATTGGAACAAAGTGTGGAACATGTTGGAAGCTCGTACTC
AGGATGAATGCATCCTCCACTTTTTGAGACTTCCATTGAGGACCCATACCTTGAGAATTAGATGCCTTC
CCTTGGGCCTTTGGCCTACCAGCCTGTCCCTTCACTCAGTCAGGAAATCCAGTTATGAGTACTGTTGCT
TTTTTGGCATCTGTGGTGGACCTCGCGTGGCATCTGCTGCAGCAAAAAGCGGCTTTGGAGGAGTTTTCTC
GGGTCCGGGAGGAGTACCCTGGAATTGGTTGAAGCTCATGTCAAGAAAGTACAAGAAGCAGCAGCAGC
CTCTGGGAAAGTGGATCCACCTACGGTCTGGAGAGCAGCTGCATTGCAGGCACAGGGCCCGATGAGCCA
GAGAAGCTTGAAGGAGCTGAAGAGGAAAAATGGAAGCCGACCCTGATGGTCAGCAGCCTGAAAAGCGAG
AAAATAAAGTGGAAAATGAAACGGATGAAGGTGATAAAGCACAAGATGGAGAAAAAGAAAAAATAGTGA
AAAGAACAGGATAGTGAAGTGAAGTGAAGGATACCAAAATCAGAAGAAAAGGAGACTGAAGAGAACAAGAA
CTACTGATACATGTAAGAAAGAGAAAGTGAATGACTGGGAAGAAGAAAGTGAACATGAAATTTCCGAAAG
GAAATGTTGCCACAGCCGAGCAGCTGCTTGCCTCAGCGGCTACCAAAGCCAAGCACCTGGCTGCAGT
GGAAGAAAGAAAGATCAAGTCCCTGGTAGCTCTTGGTTGAGACACAAATGAAGAACTAGAGATCAAA
CTTCGACATTTTGAAGAGCTGGAACACTATCATGGACAGAGAGAAAGAAAGCTCTAGAACAACAGAGGCAGC
AGTTGCTTACTGAACGCCAAAACCTCCACATGGAACAGCTGAAGTATGCTGAATTACGAGCAGCAGCAGCA
AATGGAACAGCAGCAGCATGGCCAGAACCCTCAACAGGCACACCAGCACTCAGGAGGACCTGGCCTGGCC
CCACTTGGAGCAGCAGGGCACCCTGGCATGATGCCTCATCAACAGCCCTCCCTACCTCTGATGCACC
ACCAGATGCCACCACCTCATCCACCCAGCCAGGTCAGATACCAGGCCAGGTTCCATGATGCCCGGCA
GCACATGCCAGGCCGATGATCCCACTGTTGCAGCCAACATCCACCCCTCTGGGAGTGGCCCTACCCT
CCTGGCATGCCACCAATGCCAGGAAACATCTTAGGACCCCGGTTACCCCTGACAGCACCTAACGGCATGT
ATCCCTCCACACAGCAGCAGCCACCACCACCTGCAGATGGGGTCCCTCCGCTCCTGCTCC
TGGCCCGCAGCCTCAGCTGCTCT
```

ACGCGTACGCGGCCGCTCGAG – GFP Tag – GTTTAA

Protein Sequence:

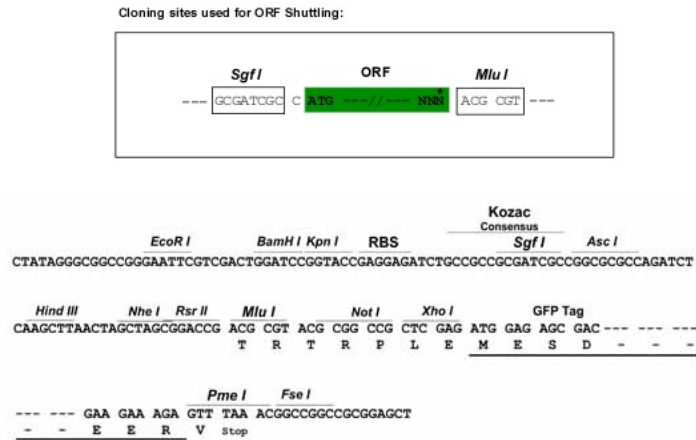
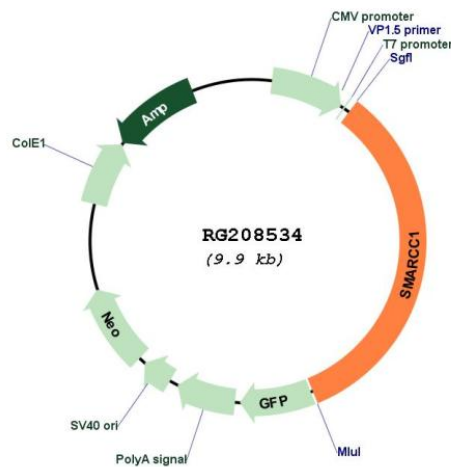
>RG208534 representing NM_003074
 Red=Cloning site Green=Tags(s)

```
MAAAGGGGPGTAVGATGSGIAAAAAGLAVYRRKDGPPATKFWESPETVSQLDSVRVWLKHKYKYYHAD
APTNTKLAGLVVQLLQFQEDAFGKHVTNPAFTKLPKCFMDFKAGGALCHILGAAKYKNEQGWRFDLQ
NPSRMDRNVEMFMNIEKTLVQNNCLTRPNIYLPDIIDLKLANCLKDIKRRHQGTFDEKSKASHHIYPYS
SSQDDEEWLRPVMRKEKQVLVHWGFYPDSYDTWVHSNDVDAEIEDPPIPEKPKVHVWKWILDITDIFNEWM
NEEDYEVDENRKPVSFRQRISTKNEEPVRSERRDRKASANARKRKHSPSPPPPTPTESRKKSGKKQAS
LYGKRRSQKEEDEQEDLTKDMEDPTVPNIEEVVLPKNVNLKKDSENTPVKGGTVADLDEQDEETVTAGG
KEDEDPAKGDQSRVLDGEDNVTEQTNHIIIPSYASWFDYNCIHVIERRALPEFFNGKNKSKTPEIYLAY
RNFIMIDTYRLNPQEYLTSTACRRNLTDGVCAMRVHAFLEQWGLVNYQVDPESRPMAMPPTPHFNVLA
DTPSGLVPLHLRSPQVPAQAQMLNFPEKNKEKPVLDQNFGLRTDIYSKTLAKSKGASAGREWTEQETLL
LLEALEMYKDDWNKVSEHVGSRQDECILHFLRLPIEDPYLENSDASLGLAYQPVPFSQSGNPVMSTVA
FLASVVDPRVASAAAKALEEF SRVREEVPLELVEAHVKKVQEAARASGKVDPTYGLESSCIAGTGPDEP
EKLEGAEEKMEADPDGQPEKAENKVENETDEGDKAQDGENEKNSEKEQDSEVSEDTKSEEKETEENKE
LTDTCKERESDTGKKKVEHEISEGNVATAAAAALASAATKAKHLAAVEERKIKSLVALLVETQMKKLEIK
LRHFEELLETIMDREKEALEQQRQQLLTERQNFHMEQLKYAELRARQMEQQQHGNPQQAHQHSGGPGLA
PLGAAGHPGMMPHQPPYPPLMHHQMPPHPHPQPGQIPGPGSMMPGQHMPGRMIPTVAANIHPSGSGPTP
PGMPPMPGNILGPRVPLTAPNGMYPPPPQPPPPPPADGVPPPPAPGPPASAAP
```

TRTRPLE – GFP Tag – V

Restriction Sites:

Sgfl-MluI

Cloning Scheme:

Plasmid Map:


ACCN: NM_003074

ORF Size: 3315 bp

OTI Disclaimer: The molecular sequence of this clone aligns with the gene accession number as a point of reference only. However, individual transcript sequences of the same gene can differ through naturally occurring variations (e.g. polymorphisms), each with its own valid existence. This clone is substantially in agreement with the reference, but a complete review of all prevailing variants is recommended prior to use. [More info](#)

OTI Annotation: This clone was engineered to express the complete ORF with an expression tag. Expression varies depending on the nature of the gene.

Components:	The ORF clone is ion-exchange column purified and shipped in a 2D barcoded Matrix tube containing 10ug of transfection-ready, dried plasmid DNA (reconstitute with 100 ul of water).
Reconstitution Method:	<ol style="list-style-type: none">1. Centrifuge at 5,000xg for 5min.2. Carefully open the tube and add 100ul of sterile water to dissolve the DNA.3. Close the tube and incubate for 10 minutes at room temperature.4. Briefly vortex the tube and then do a quick spin (less than 5000xg) to concentrate the liquid at the bottom.5. Store the suspended plasmid at -20°C. The DNA is stable for at least one year from date of shipping when stored at -20°C.
RefSeq:	<u>NM_003074.4</u>
RefSeq Size:	5780 bp
RefSeq ORF:	3318 bp
Locus ID:	6599
UniProt ID:	<u>Q92922</u>
Cytogenetics:	3p21.31
Domains:	CHROMO, myb_DNA-binding, SWIRM
Protein Families:	Stem cell - Pluripotency, Transcription Factors
Gene Summary:	The protein encoded by this gene is a member of the SWI/SNF family of proteins, whose members display helicase and ATPase activities and which are thought to regulate transcription of certain genes by altering the chromatin structure around those genes. The encoded protein is part of the large ATP-dependent chromatin remodeling complex SNF/SWI and contains a predicted leucine zipper motif typical of many transcription factors. [provided by RefSeq, Jul 2008]