

Product datasheet for **RG208529**

RAB5B (NM_002868) Human Tagged ORF Clone

Product data:

Product Type: Expression Plasmids
 Product Name: RAB5B (NM_002868) Human Tagged ORF Clone
 Tag: TurboGFP
 Symbol: RAB5B
 Mammalian Cell Selection: Neomycin
 Vector: pCMV6-AC-GFP (PS100010)
 E. coli Selection: Ampicillin (100 ug/mL)
 ORF Nucleotide Sequence: >RG208529 representing NM_002868
 Red=Cloning site Blue=ORF Green=Tags(s)

TTTTGTAATACGACTCACTATAGGGCGGCCGGGAATTCGTCGACTGGATCCGGTACCGAGGAGATCTGCC
 GCC**CGGATCGCC**

ATGACTAGCAGAAGCACAGCTAGGCCCAATGGGCAACCCAGGCCAGCAAAATTTGCCAGTTCAAATTGG
 TCCTGCTGGGAGAATCTGCAGTGGGAAAGTCAAGCCTGGTATTACGTTTTGTCAAAGGCCAGTTCATGA
 GTACCAGGAGAGCACCATTGGAGCGGCCTTCCTCACCCAGTCCGTTTGTCTAGATGACACAACAGTGAAG
 TTTGAGATCTGGGACACAGCTGGGACAGGAGCGATATCACAGCTTAGCCCCATGTACTACAGGGGTGCC
 AAGCTGCAATCGTGGTTTACGACATTACTAATCAGGAAACCTTTGCCCGAGCAAAGACATGGGTGAAGGA
 ACTACAGCGACAGGCCAGTCTAGCATCGTTATTGCCCTGGCAGGGAACAAGCTGACCTGGCCAACAAA
 CGTATGGTGGAGTATGAAGAGGCCAGGCATATGCAGATGACAACAGCTTATTGTTTCATGGAGACTTCAG
 CCAAGACAGCTATGAACGTGAATGATCTCTTCTGGCAATAGCTAAGAAGTTGCCAAAGAGTGAACCCCA
 GAATCTGGGAGGTGCAGCAGGCCGAAGCCGGGTGTGGATCTCCATGAACAGTCCCAGCAGAACAAGAGC
 CAGTGTTGTAGCAAC

ACGCGTACGCGGCCGCTCGAG - GFP Tag - GTTTAA

Protein Sequence: >RG208529 representing NM_002868
 Red=Cloning site Green=Tags(s)

MTSRSTARPNQPPQASKICQFKLVLLGESAVGKSSLVLRVFKGQFHEYQESTIGAAFLTQSVCLDDTTVK
 FEIWDTAGQERYHSLAPMYRGAQAAIVVYDITNQETFARAKTWKELQRQASPSIVIALAGNKADLANK
 RMVEYEEAQAYADDNSLLFMETSAKTAMNVNDFLAI AKKLPKSEPNLGAAGRSGVDLHEQSQQNKS
 QCCSN

TRTRPLE - GFP Tag - V

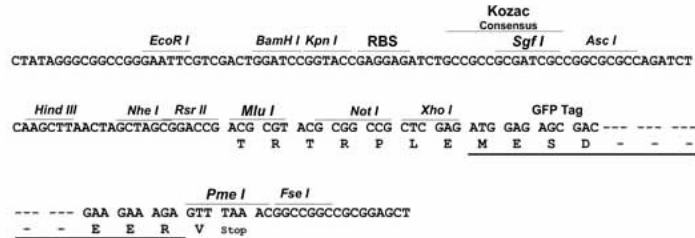
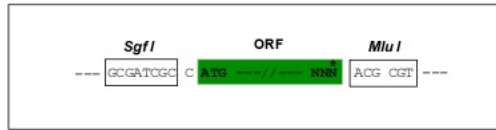


[View online »](#)

Restriction Sites: SgfI-MluI

Cloning Scheme:

Cloning sites used for ORF Shutting:



ACCN: NM_002868

ORF Size: 645 bp

OTI Disclaimer: The molecular sequence of this clone aligns with the gene accession number as a point of reference only. However, individual transcript sequences of the same gene can differ through naturally occurring variations (e.g. polymorphisms), each with its own valid existence. This clone is substantially in agreement with the reference, but a complete review of all prevailing variants is recommended prior to use. [More info](#)

OTI Annotation: This clone was engineered to express the complete ORF with an expression tag. Expression varies depending on the nature of the gene.

Components: The ORF clone is ion-exchange column purified and shipped in a 2D barcoded Matrix tube containing 10ug of transfection-ready, dried plasmid DNA (reconstitute with 100 ul of water).

Reconstitution Method:

1. Centrifuge at 5,000xg for 5min.
2. Carefully open the tube and add 100ul of sterile water to dissolve the DNA.
3. Close the tube and incubate for 10 minutes at room temperature.
4. Briefly vortex the tube and then do a quick spin (less than 5000xg) to concentrate the liquid at the bottom.
5. Store the suspended plasmid at -20°C. The DNA is stable for at least one year from date of shipping when stored at -20°C.

RefSeq: [NM_002868.4](#)

RefSeq Size: 3336 bp

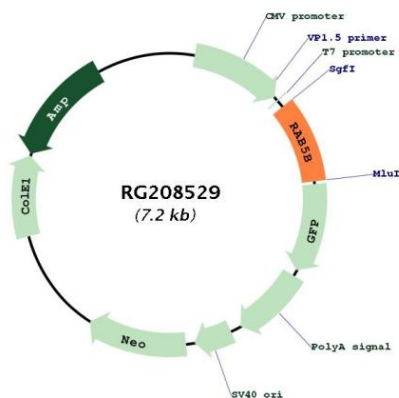
RefSeq ORF: 648 bp

Locus ID: 5869

UniProt ID: [P61020](#)

| | |
|-------------------|---|
| Cytogenetics: | 12q13.2 |
| Domains: | ras, RAN, RAS, RHO, RAB |
| Protein Families: | Druggable Genome |
| Protein Pathways: | Endocytosis |
| Gene Summary: | Protein transport. Probably involved in vesicular traffic (By similarity).[UniProtKB/Swiss-Prot Function] |

Product images:



Circular map for RG208529