

Product datasheet for **RG208526**

TCF12 (NM_207037) Human Tagged ORF Clone

Product data:

Product Type:	Expression Plasmids
Product Name:	TCF12 (NM_207037) Human Tagged ORF Clone
Tag:	TurboGFP
Symbol:	TCF12
Synonyms:	bHLHb20; CRS3; HEB; HsT17266; HTF4; p64; TCF-12
Mammalian Cell Selection:	Neomycin
Vector:	pCMV6-AC-GFP (PS100010)
E. coli Selection:	Ampicillin (100 ug/mL)



[View online »](#)

ORF Nucleotide Sequence:

>RG208526 representing NM_207037
 Red=Cloning site Blue=ORF Green=Tags(s)

TTTTGTAATACGACTCACTATAGGGCGGCCGGAATTCGTGACTGGATCCGGTACCGAGGAGATCTGCC
 GCC**GCGATCGCC**

ATGAATCCCCAGCAACAACGCATGGCCGTATAGGGACCGACAAGGAGCTGAGCGACCTACTGGACTTCA
 GTGCGATGTTTTCCACCTGTTAATAGTGGGAAAAGTACCAACTACACTGGGAAGCAGTCAGTTCAG
 TGGATCAGGTATTGATGAAAGAGGAGGTACAACATCTTGGGGAACAAGTGGTCAACCAAGTCTTCTAT
 GATTACTTAGAGGTTTTACAGACAGCCCTCATTACAGTGATCACTTGAATGACAGTCGATTAGGAGCCC
 ATGAAGGCTTGTCCCAACACCTTTTCACTGAACCTCAATCTGATGGGAAAAACATCAGAGAGAGGCTCATT
 TTCCCTGTACAGCAGAGATACTGGATTACCAGGCTGTCAATCTAGTCTCCTGAGACAAGATCTGGGGCTT
 GGGAGCCAGCACAGCTATCTTCTCAGGAAAACCTGGGACAGCATACTATTCTTCTGCTACAAGTT
 CCAGGAGGAGACCACTCCATGACTCTGCAGCGCTTGATCCCTTGAAGCAAAAAAAGTCAGAAAGGTGCC
 TCCTGGTTTGCCCTCTTCTGTATATGCACCATCCCAAAATTCAGATGATTTCAACCGTGAATCTCCTAGT
 TATCCATCTCCTAAGCCCAACCAAGTATGTTCCGCTAGCACTTTCTTTATGCAAGATGGGACCCACAATT
 CTCTGACCTTTGGAGTTCATCAATGGGATGAGCCAGCCTGGTTTTGGTGGAAATTCGGGGACCTCCAC
 TTCCACATGTCTCAATCCAGTAGTTATGGCAACCTTCATTACATGACCGCTTGAGTTATCCTCCACAC
 TCAGTTTCACCAACAGACATAAACACGAGTCTCCACCAATGTCCAGCTTTCATCGCGGCAGTACCAGCA
 GTTCACCTTACGTTGCTGCCTCACACACTCCTCCCATCAATGGATCAGACAGCATTCTAGGAACCAGAGG
 GAATGCTGCTGGAAGCTCACAGACAGGTGATGCACTTGGAAAGGCTTTGGCATCTATTTATTCTCCTGAC
 CATACCAGCAGTAGTTTTCCGTCAAATCCATCAACACCAGTTGGATCACCTTACCTCTCACAGGTACCA
 GTCAGTGGCCAAGACCTGGAGGGCAAGCACCTTATCCCAAGCTATGAAAACCTCACTCCACTCCCTGAA
 AAATCGAGTTGAGCAGCAACTTCACGAGCATTTGCAAGATGCAATGTCTTCTTAAAGGATGCTGTGAG
 CAGTCTCGAATGGAGGATCGTTTAGACAGACTGGATGATGCAATCCATGTGCTGCGGAACCATGCTGTGG
 GACCTTCCACCAGTTTGCTGCTGGTACAGTGATATACATAGTTTATTGGGACCATCCATAATGCACC
 AATTGGAAGCCTCAATTCAAACTATGGAGGATCAAGCCTTGTGCAAGCAGTCGATCAGCTTCAATGGTT
 GGAACCTCATCGGAAGACTCTGTCAGTCTCAATGGCAATCATTAGTCTGTCTAGTACAGTCACTACTT
 CAAGCACAGACCTGAACCATAAAACACAAGAAAATATAGAGGTGGCTTGCAAAGTCAGTCTGGAAGTGT
 TGTTACAACAGAAATCAAGACTGAAAACAAAGAAAAGGATGAAAACCTTCATGAACCTCCTTCATCAGAT
 GACATGAAGTCAGATGATGAATCCTCCAAAAAGATATCAAGTTTCATCTAGAGGCAGAACCAAGCAGTA
 CTAAATGAAGATGAGGATTTGAACCCTGAACAGAAAGATAGAAAGGGAGAAGGAGAGGCGGATGGCTAACAA
 TGCCAGAGAACGCTTACGCGTGC GGATATTAATGAAGCATTCAAGAGCTTGGCCGAATGTGTCAGCTT
 CACTTGAAGAGTGAAAAACCCCAAAACAAAACCTTATTCTTTCATCAAGCCGTGGCAGTCATCCTTAGTC
 TAGAACAGCAAGTCAGAGAGAGGAACCTTAACCCCAAAGCAGCCTGCCTTAAGAGAAGGGGAAGAAAA
 AGTTTCTGCCGTATCGGCAGAGCCGCCAACCACTGCCAGGAACCCATCCTGGGCTTAGTGAAACTACC
 AACCTATGGGTCATATG

AG**CGGACCG**ACGCGTACGCGGCCGCTCGAG - GFP Tag - GTTTAA

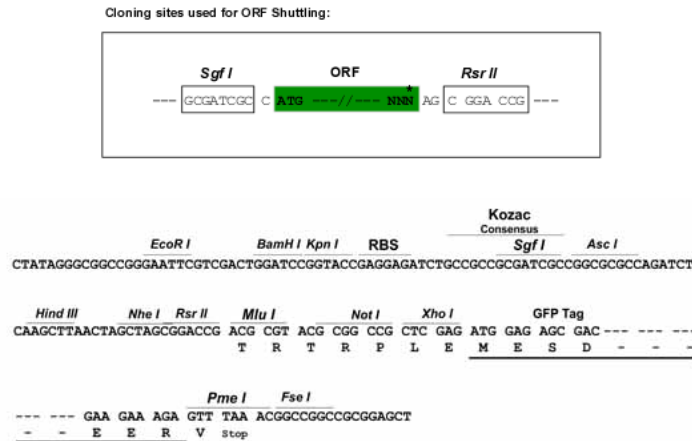
Protein Sequence: >RG208526 representing NM_207037
 Red=Cloning site Green=Tags(s)

MNPQQQRMAAIGTDKELSDLLDFSAMFSPVNSGKTRPTTLGSSQFSGSGIDERGGTTSWGTSGQPSPSY
 DSSRGFTDSPHYSDHLNDSRLGAHEGLSPTPFMNSNLMGKTSEKGSFSLYSRDTGLPGCQSSLLRQDLGL
 GSPAQLSSSGKPGTAYYSFATSSRRRPLHDSAALDPLQAKKVRKVPPGLPSSVYAPSPNSDDFNRES
 YPSPKPPTSMFASTFFMQDGHNSDDLWSSNGMSQPGFGGILGTSTSHMSQSSSYGNLHSHDRLSYPPH
 SVSPTDIINTSLPPMSSFHRGSTSSSPYVAASHTPPINGSDSILGTRGNAAGSSQTGDALGKALASIYSPD
 HTSSSFSPNPSTVPVGSPLTGTSTQWPRPGQAPSSPSYENSLHSLKNRVEQQLHEHLQDAMSFVKDyce
 QSRMEDRLDRLDDAIHVLNRHAVGPSTSLPAGHSDIHSLLGPSHNAIGSLNSNYGGSSLVASSRSASMV
 GTHREDSVSLNGNHSVLSSTVTTSTDLNHKTQENYRGGLSQSGTVVTEIKTENKEKDENLHEPPSSD
 DMKSDDESSQDKIKVSSRGRSTSTNEDEDLNPEQKIEREKERRMANNARERLRVRDINEAFKELGRMCQL
 HLKSEKPTKLLILHQAVALVILSLEQQVRERLNPKAACLRREEEKVSAVSAEPPTTLPGTHPGLSETT
 NPMGHM

SGPTRRRLE - GFP Tag - V

Restriction Sites: SgfI-RsrII

Cloning Scheme:



ACCN: NM_207037

ORF Size: 2118 bp

OTI Disclaimer: The molecular sequence of this clone aligns with the gene accession number as a point of reference only. However, individual transcript sequences of the same gene can differ through naturally occurring variations (e.g. polymorphisms), each with its own valid existence. This clone is substantially in agreement with the reference, but a complete review of all prevailing variants is recommended prior to use. [More info](#)

OTI Annotation: This clone was engineered to express the complete ORF with an expression tag. Expression varies depending on the nature of the gene.

Components: The ORF clone is ion-exchange column purified and shipped in a 2D barcoded Matrix tube containing 10ug of transfection-ready, dried plasmid DNA (reconstitute with 100 ul of water).

Reconstitution Method:

1. Centrifuge at 5,000xg for 5min.
2. Carefully open the tube and add 100ul of sterile water to dissolve the DNA.
3. Close the tube and incubate for 10 minutes at room temperature.
4. Briefly vortex the tube and then do a quick spin (less than 5000xg) to concentrate the liquid at the bottom.
5. Store the suspended plasmid at -20°C. The DNA is stable for at least one year from date of shipping when stored at -20°C.

RefSeq: [NM_207037.1](#), [NP_996920.1](#)

RefSeq Size: 4806 bp

RefSeq ORF: 2121 bp

Locus ID: 6938

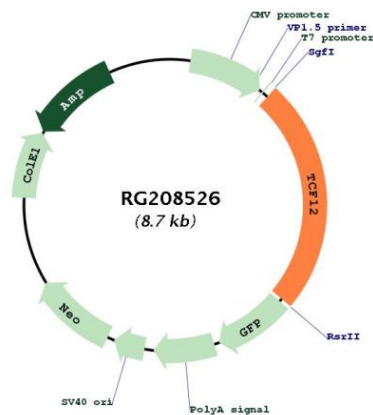
UniProt ID: [Q99081](#)

Cytogenetics: 15q21.3

Protein Families: Druggable Genome, Transcription Factors

Gene Summary: The protein encoded by this gene is a member of the basic helix-loop-helix (bHLH) E-protein family that recognizes the consensus binding site (E-box) CANNTG. This encoded protein is expressed in many tissues, among them skeletal muscle, thymus, B- and T-cells, and may participate in regulating lineage-specific gene expression through the formation of heterodimers with other bHLH E-proteins. Several alternatively spliced transcript variants of this gene have been described, but the full-length nature of some of these variants has not been determined. [provided by RefSeq, Jul 2008]

Product images:



Circular map for RG208526