

Product datasheet for **RG208484**

Collagen I (COL1A2) (NM_000089) Human Tagged ORF Clone

Product data:

Product Type:	Expression Plasmids
Product Name:	Collagen I (COL1A2) (NM_000089) Human Tagged ORF Clone
Tag:	TurboGFP
Symbol:	Collagen I
Synonyms:	EDSARTH2; EDSCV; OI4
Mammalian Cell Selection:	Neomycin
Vector:	pCMV6-AC-GFP (PS100010)
E. coli Selection:	Ampicillin (100 ug/mL)
ORF Nucleotide Sequence:	>RG208484 representing NM_000089. Blue=ORF Red=Cloning site Green=Tag(s)

```
GCTCGTTTGTAGTGAACCGTCAGAATTTTGTAAACGACTCACTATAGGGCGCCGGGAATTCGTCGACTG
GATCCGGTACCGAGGAGATCTGCCGCCGCGATCGCC
ATGCTCAGCTTTGTGGATACGCGGACTTTGTTGCTGCTTGCAGTAACCTTATGCCTAGCAACATGCCAA
TCTTTACAAGAGGAAACTGTAAGAAAGGGCCAGCCGGAGATAGAGGACCACGTGGAGAAAGGGTCCA
CCAGGCCCCAGGCAGAGATGGTGAAGATGGTCCCACAGGCCCTCTGGTCCACCTGGTCTCTGGC
CCCCCTGGTCTCGGTGGAACTTTGCTGCTCAGTATGATGGAAAAGGAGTTGGACTTGGCCCTGGACCA
ATGGGCTTAATGGGACCTAGAGGCCACCTGGTGCAGTGGAGCCCAAGCCCTCAAGGTTTCCAAGGA
CCTGCTGGTGAGCCTGGTGAACCTGGTCAAACCTGGTCTGCAGGTGCTCGTGGTCCAGCTGGCCCTCT
GGCAAGGCTGGTGAAGATGGTCAACCTGGAAAACCCGGACGACCTGGTGAAGAGAGGAGTTGTTGGACCA
CAGGGTGCCTCGTGGTTTCCCTGGAACCTCTGGACTTCTGGCTTCAAAGGCATTAGGGGACACAATGGT
CTGGATGGATTGAAGGGACAGCCCGGTGCTCTGGTGTGAAGGGTGAACCTGGTGGCCCTGGTGAAGT
GGAACCTCAGGTCAAACAGGAGCCCGTGGGCTTCTGGTGAAGAGGACGTGTTGGTGGCCCTGGCCCA
GCTGGTGGCCGTGGCAGTGATGGAAGTGGGTCCCGTGGGTCTGCTGGTCCCATTGGGTCTGTGGC
CCTCCAGGCTTCCAGGTGCCCTGGCCCAAGGGTGAATGGAGCTGTTGGTAACGCTGGTCTGCTGCT
GGTCCCAGGCTTCCAGGTGAAAGTGGTCTTCCAGGCTCTCCGGCCCGTTGGACCTCTGGTAAAT
CCTGGAGCAAACGGCCTTACTGGTCCAAAGGGTCTGCTGGCCTTCCGGCGTTGCTGGGCTCCCGGC
CTCCCTGGACCCCGGATTCTCTGGCCCTGTTGGTGTGCTCCCGGTGCTACTGGTGCAGAGGACTTGTG
GGTGAAGCTGGTCCAGCTGGCTCCTCAAGGAGAGAGCGGTAAAGGGTGAAGCCCGCTCTGCTGGGCC
CAAGGCTCTCTGGTCCCAGTGGTGAAGAAGGAAAGAGAGGCCCTAATGGGAAGCTGGATCTGCCGGC
CCTCCAGGACCTCTGGGCTGAGAGGTAGTCTGGTCTCGTGGTCTTCTGGAGCTGATGGCAGAGCT
GGCGTCATGGGCCCTCTGGTGTGCTGGTGAAGTGGCCCTGCTGGAGTCCGAGGACCTAATGGAGAT
GCTGGTCCGCTGGGAGCCTGGTCTCATGGGACCCAGAGGTCTTCTGGTCCCTGGAATATCGGC
CCCCTGGAAAAGAGGCTCTGTCGGCCCTCCCTGGCATCGACGGCAGGCCCTGGCCCAATTGGCCAGCT
GGAGCAAGAGGAGAGCCTGGCAACATTGGATTCCCTGGACCCAAAGGCCCACTGGTGTATCTGGCAA
```



[View online >](#)

AACGGTGATAAAGGTCATGCTGGTCTTGCTGGTCTCGGGGTGCTCCAGGTCTGATGGAAACAATGGT
GCTCAGGGACCTCCTGGACCACAGGGTGTCAAGGTGGAAAAGGTGAACAGGGTCCCCCTGGTCCTCA
GGCTTCCAGGGTCTGCCTGGCCCCTCAGTCCCCTGGTGAAGTTGGCAAACCAGGAGAAAGGGTCTC
CATGGTGAGTTTGGTCTCCCTGGTCTGCTGGTCCAAGAGGGGAACGCGGTCCCCAGGTGAGAGTGGT
GCTGCCGTCTACTGGTCTATTGGAAGCCGAGGTCTTCTGGACCCCAGGGCCTGATGGAAACAAG
GGTGAACCTGGTGGTGGTGGTGGTGGTGGTGGTGGTGGTGGTGGTGGTGGTGGTGGTGGTGGTGGT
AGGGGTGCTGCTGGCATACTGGAGGCAAGGGAGAAAAGGGTGAACCTGGTCTCAGAGGTGAAATTGGT
AACCTGGCAGAGATGGTGGTCTCGTGGTGGTCTGGTGGTGGTGGTGGTGGTGGTGGTGGTGGTGGT
GGT
CGTGGT
GCTAAAGGAGAAAGAGGAGCCAAAGGGCTAAGGGTGAACCGGTGTTGGTGGTGGTGGTGGTGGTGGT
GGAGTGGT
CCTGGTATGACTGGTGGTGGTGGTGGTGGTGGTGGTGGTGGTGGTGGTGGTGGTGGTGGTGGTGGT
CCTCCTGGT
GGCCGAAGTGGAGAAGTAGGTGACGTTGGTGGTGGTGGTGGTGGTGGTGGTGGTGGTGGTGGTGGT
GCTGGT
CTCCCTGGT
GGCATTGGCGGCCCTCCTGGGGCCCGTGGTGGTGGTGGTGGTGGTGGTGGTGGTGGTGGTGGTGGT
CCTGGTGAAGCTGGTGGTGGTGGTGGTGGTGGTGGTGGTGGTGGTGGTGGTGGTGGTGGTGGTGGT
CACAAGGGAGAGCGCGTTACCCTGGCAATATTGGTCCCGTGGTGGTGGTGGTGGTGGTGGTGGTGGT
GGCCCCGGT
GCTGGT
GAAAAGGGGCCAGAGGTCTTCTGGCTTAAAGGGACACAATGGATTGCAAGGTGGTGGTGGTGGTGGT
GGT
TCTGGCCCTGCTGGAAAAGATGGTGGTGGTGGTGGTGGTGGTGGTGGTGGTGGTGGTGGTGGTGGT
CCTCAGGGTACCAAGGCCCTGCTGGCCCCCTGGTGGTGGTGGTGGTGGTGGTGGTGGTGGTGGTGGT
GGT
CTCAGACCAAGGACTATGAAGTTGATGCTACTCTGAAGTCTCTCAACAACCAGATTGAGACCTTCTT
ACTCCTGAAGGCTCTAGAAAAGAACCCAGCTCGCACATGCCGTGACTTGAGACTCAGCCACCAGAGTGG
AGCAGTGGT
TTCTCTACTGGCGAAACCTGTATCCGGGCCAACCTGAAAACATCCAGCCAAGAACTGGTATAGGAGC
TCCAAGGACAAGAAACAGTCTGGCTAGGAGAACTATCAATGCTGGCAGCCAGTTTGAATATAATGTA
GAAGGAGTGGT
CAGAACATCACCTACCAAGAACAGCATTGCATACATGGATGAGGAGACTGGCAACCTGAAAAAG
GCTGTCATTCTACAGGGCTCTAATGATGTTGAACCTGTTGGTGGTGGTGGTGGTGGTGGTGGTGGTGGT
GTTCTTGTAGATGGTGGTGGTGGTGGTGGTGGTGGTGGTGGTGGTGGTGGTGGTGGTGGTGGTGGTGGT
AAGCCATCAGCCTGCCCTTCTTGTATTTGACCTTTGGACATCGGTGGTGGTGGTGGTGGTGGTGGTGGT
GTGGACATTGGCCAGTCTGTTTCAA

ACGGTACGCGGCCGCTCGAG - GFP Tag - GTTAAAC

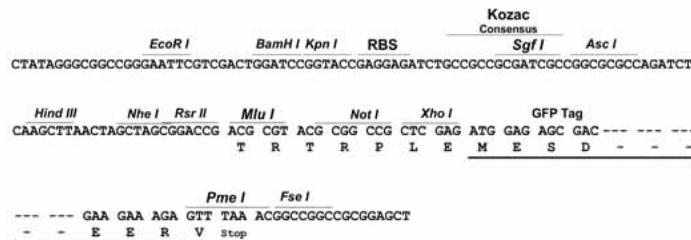
Protein Sequence: >Peptide sequence encoded by RG208484
 Blue=ORF Red=Cloning site Green=Tag(s)

MLSFVDTRLLLLAVTLCLATCQSLQEETVRKGPAGDRGPRGERGPPGPPGRDGEDGPTGPPGPPGPPG
 PPGLGGNFAAQYDGKGVGLGPGMGLMGRGPPGAAGAPGQGFQGPAGEGEPGQTGPAGARGPAGPP
 GKAGEDGHPGKPRGERGVVGPQGARGFPPTGLPGFKGIRGHNL DGLKGQPGAPGVKGEPPAGGEN
 GTPGQTGARGLPGERGRV GAGPAGARGSDG SVGPVGPAGP IGSAGPPGFP GAGPKGEIGAVNAGPA
 GPAGPRGEVGLPGLSGPVGPPGNPGANL TGAKGAAGLPGVAGAPGLPGPRGIPGPVGAAGATGARGLV
 GEPGAPGSKGSGNKGEPSAGPQPPGPSGEEGRKPNGEAGSAGPPGPPGLRSPGSRGLPGADGRA
 GVMGPPGSRGASGPAGVRGPNGDAGRPGEPLMGRPLPGSPGNI GPAGKEGPVGLPGIDGRPGPIGPA
 GARGEPGNI GFPGPKGPTGDPGKNGDKHAGLAGARGAPGDGNGAQQGPPGQGVQGGKGEQGGPPGPP
 GFQGLPGSPGAGEVGKPERGLHGEFGLPGPAGPRGERGPPGESGAAGPTGPIGSRGSPGPPGPDGK
 GEPGVVAVGTAGPSGSLPGERGAAGIPGGKGEKGEPLRGEIGNPGRDGARGAPGAVGAPGAGAT
 GDRGEAGAAGPAGPARGSPGERGEVGPAGPNGFAGPAGAAGQP GAKGERGAKGPKGENGVVGTGPV
 GAAGPAGPNGPPGAGSRDGGPPGMTGFPGAAGRTGPPGPSG I SGPPGPPGAGKEGLRGRDQGPV
 GRTGEVAVGPPGFAGEKPSGEAGTAGPPGTPGPQGLL GAPGILGLPGSRGERLPGVAVGVEGPGPL
 GIAGPPGARGPPGAVGSPGVNGAPGEAGRDGNPNDGPPGRDGGQPGHKGERGYPGNIGPVAAGAPGPH
 GPVGPAGKHGNRGETGPSGPVGPAGAVGPRGSPGQGI RGDKEGPEKGRPLPGLKGHNGLQGLPGIA
 GHHGDQGAPG SVGPAGPRGPAGSPGAGKDRGTGHPGTVPAGIRGPQGHQGPAGPPGPPGPPGVS
 GGGYDFGYDGFYRADQPR SAPSLRPKDYEV DATL KSLNNQIETLL TPEGSRKNPARTCRDLRLSHP
 EWSSGYYWIDPNQGTMDAIKVYCDFSTGETCIRAQENIPAKNWRSSKDKKHVWLGETINAGSQFEYNV
 EGVTSKEMATQLAFMRL LANYASQNI TYHCKNSIAYMDEETGNLKKAVILQGSNDVELVAEGNSRFYTT
 VLV DGSKKTNEWGKTI IEYKTNKPSRLPFLDIAPLDIGGADQEFFVDIGPVCFK
TRTRPLEMESDESGLPAMEIECRITGTLNGVEFELVGGEGTPEQGRMTNKMKSTKGALTFSPYLLSHV
 MGYGFYHFGTYPSGYENPFLHAINNGGYNTRIEKYEDGGVLHVSYRYEAGRVIGDFKVMGTGFPED
 SVIFTDKIIRS NATVEHLHPMGDNDLDGSFTRTFSLRDGGYSSVVDSHMHFKSAIHPSILQNGGPMFA
 FRRVEEDHSNTELGIVEYQHAFKTPDADAGEERV

Restriction Sites: SgfI-MluI

Cloning Scheme:

Cloning sites used for ORF Shutting:



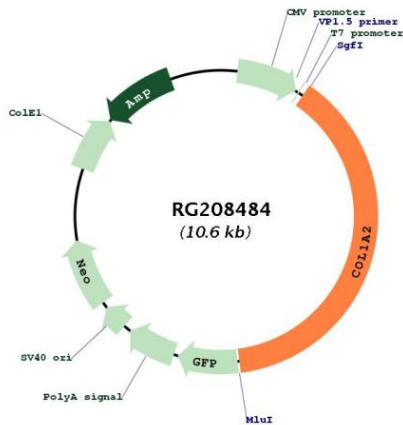
ACCN: NM_000089

ORF Size: 4098 bp

OTI Disclaimer:	<p>Due to the inherent nature of this plasmid, standard methods to replicate additional amounts of DNA in E. coli are highly likely to result in mutations and/or rearrangements. Therefore, OriGene does not guarantee the capability to replicate this plasmid DNA. Additional amounts of DNA can be purchased from OriGene with batch-specific, full-sequence verification at a reduced cost. Please contact our customer care team at custsupport@origene.com or by calling 301.340.3188 option 3 for pricing and delivery.</p> <p>The molecular sequence of this clone aligns with the gene accession number as a point of reference only. However, individual transcript sequences of the same gene can differ through naturally occurring variations (e.g. polymorphisms), each with its own valid existence. This clone is substantially in agreement with the reference, but a complete review of all prevailing variants is recommended prior to use. More info</p>
OTI Annotation:	This clone was engineered to express the complete ORF with an expression tag. Expression varies depending on the nature of the gene.
Components:	The ORF clone is ion-exchange column purified and shipped in a 2D barcoded Matrix tube containing 10ug of transfection-ready, dried plasmid DNA (reconstitute with 100 ul of water).
Reconstitution Method:	<ol style="list-style-type: none"> 1. Centrifuge at 5,000xg for 5min. 2. Carefully open the tube and add 100ul of sterile water to dissolve the DNA. 3. Close the tube and incubate for 10 minutes at room temperature. 4. Briefly vortex the tube and then do a quick spin (less than 5000xg) to concentrate the liquid at the bottom. 5. Store the suspended plasmid at -20°C. The DNA is stable for at least one year from date of shipping when stored at -20°C.
RefSeq:	NM_000089.4
RefSeq Size:	5411 bp
RefSeq ORF:	4101 bp
Locus ID:	1278
UniProt ID:	P08123
Cytogenetics:	7q21.3
Domains:	COLFI, Collagen
Protein Families:	Druggable Genome
Protein Pathways:	ECM-receptor interaction, Focal adhesion
MW:	129.3 kDa

Gene Summary:

This gene encodes the pro-alpha2 chain of type I collagen whose triple helix comprises two alpha1 chains and one alpha2 chain. Type I is a fibril-forming collagen found in most connective tissues and is abundant in bone, cornea, dermis and tendon. Mutations in this gene are associated with osteogenesis imperfecta types I-IV, Ehlers-Danlos syndrome type VIIB, recessive Ehlers-Danlos syndrome Classical type, idiopathic osteoporosis, and atypical Marfan syndrome. Symptoms associated with mutations in this gene, however, tend to be less severe than mutations in the gene for the alpha1 chain of type I collagen (COL1A1) reflecting the different role of alpha2 chains in matrix integrity. Three transcripts, resulting from the use of alternate polyadenylation signals, have been identified for this gene. [provided by R. Dagleish, Feb 2008]

Product images:


Circular map for RG208484