

Product datasheet for **RG208483**

DDX11 (NM_152438) Human Tagged ORF Clone

Product data:

Product Type:	Expression Plasmids
Product Name:	DDX11 (NM_152438) Human Tagged ORF Clone
Tag:	TurboGFP
Symbol:	DDX11
Synonyms:	CHL1; CHLR1; KRG2; WABS
Mammalian Cell Selection:	Neomycin
Vector:	pCMV6-AC-GFP (PS100010)
E. coli Selection:	Ampicillin (100 ug/mL)



[View online »](#)

ORF Nucleotide Sequence:

>NM_152438 ORF sequence, RG208483 may differ due to SNPs.
 Blue=ORF Red=Cloning site Green=Tag(s)

```

GCTCGTTTAGTGAACCGTCAGAATTTTGTAAACGACTCACTATAGGGCGGCCGGGAATTCGTGACTG
GATCCGGTACCGAGGAGATCTGCCGCCCGGATCGCC
ATGGCTAATGAAACACAGAAGGTTGGTGCCATCCATTTTCCTTTCCCTTACACCCATTCCATCCAG
GAAGACTCATGGCAGAGCTGTACCGGGTTTTGGAGGCTGGCAAGATTGGGATATTTGAGAGTCCAAC
GGCACTGGGAAGTCCTTAAGTCTTATTTGTGGGGCCCTCTTGCTCCGTGACTTTGAACAGAAGAAG
CGTGAAGAAGAGGCACGACTCCTTGAAACTGAACTGGCCCTTACATGATGAGAAAGATGAATCCCTG
TGTCTGTCTTCTCTGCGAAGGGGCTGCAGGCACCCGAGGCCTGCTGGAGAACCAGGCCTGGGTTACT
CAGTTTGTGAGAAGAAAGAGAGGGACCTGGTGGACCGACTAAAGGCGGAGCAGGCCAGGAGGAAG
CAGCGAGAAGAAGCCTGCAGCAGCTGCAGCACAGGGTGCAGCTCAAGTATGCAGCCAAGCGCTGAGG
CAGGAAGAAGAAGAAAGAGAGAATCTCCTCCGCTCAGCAGGGAGATGCTAGAGACAGGCCCGGAGGCT
GAGCGGCTGGAGCAGCTGGAGTCTGGGGAGGAGGAGTGGTCTCGCCGAATACGAGAGTATGAGGAG
AAAAAGGTGGCGAGCAGAGTGGATGAGGATGAGGATGACCTGGAGGAAGAACACATAACTAAGATTTAT
TACTGTAGTCGGACACACTCCCAGCTGGCCAGTTTGTGATGAGGTGAAGAAGACCCCTTTGGCAAG
GATGTTCCGGTGGTCTCCCTTGGCTCCCGCAGAACCTTTGTGTAATGAAGACGTGAAAAGCCTAGGT
TCTGTGCAGCTTATCAACGACCGCTGTGTGGACATGCAGAGAAGCAGGCACGAGAAGAAGAAAGGAGCT
GAGGAGGAGAAGCCAAAGAGGAGGAGGCAGGAGAAGCAGGCAGCCTGCCCTTCTACAACCAGCAGCAG
ATGGGCCCTTCTCCGGGATGAGGCCCTGGCAGAGGTGAAGGACATGGAGCAGCTGCTGGCCCTTGGGAAG
GAGGCCCGGGCCTGTCCCTATTACGGGAGCCGCTTGCATCCCTGCAGCCAGCTGGTGGTGTGCC
TATCAGATGCTGCTGCATGCGGCCACTCGCAGGCCGCGGGCATCCGGCTGCAGGACCAGGTGGTATC
ATCGACGAGGCGCACAACTGATGCACACCATCACGGGCATGCACAGCGTGGAGGTGAGGCTCCAC
CTCTGCCAGGCCATTCCAGCTGCTGCAGTACGTGGAGCGATACGGGAAGCGTTTTGAAGGCCAAGAAC
CTGATGTACCTGAAGCAGATCCTGTATTTGCTGGAGAAATTCGTGGCTGTGCTAGGGGGAAACATTAAG
CAAAATCCCAATACACAGAGTCTGTACAGACAGGGACGGAGCTGAAGACCATCAACGACTTTCTCTTC
CAGAGCCAGATCGACAACATCAACCTGTTCAAGGTGCAGCGATACTGTGAGAAGAGCATGATCAGCAGA
AAGCTCTTTGGATTCACTGAACGGTACGGAGCAGTGTCTCATCCGGGAGCAGCCAAACTGGTGGG
TTTCAGCAATTCCTGCAGAGCCTGCAGCCAGGACGACTGAAGCTTTCAGCCCTGCAGACGAGAGT
CAGGCCAGCACCTGCGACCAGCTTCTCCACTGATGCACATCCAAGGCTTCTGGCAGCTCTCACTACG
GCCAACAGGACGGCAGGTCATCCTGAGCCGCCAAGGCAGCCTCAGTCAGAGCACCTGAAGTTTTTG
CTCCTGAATCCAGCTGTGCACTTTGCCCAAGTGGTGAAGGAATGCCGGCAGTGGTCATTGCGGGGGT
ACCATGCAGCCGGTGTCTGACTTCCGGCAGCAGCTGCTGGCCTGTGCCGGGTGGAAGCTGAGCGCGTG
GTGGAGTTTTCTGTGGTACAGTATCCCTCCAGACAACATCCTGCCCTCGTCACTGCAGCGGGATC
TCCAACCAGCCGCTGGAATTCAGGTTCCAGAAAAGAGAGCTGCCTCAGATGATGGACGAGGTGGTCCG
ATTCTCTGTAACCTGTGCGGTGTGGTCTCTGGAGGGTGGTCTGTTTTCTCCCTCTACGAGTACCTG
CGCCAGGTCCATGCCACTGGGAGAAGGGTGGCCTGCTGGGCCGTCTGGCTGCCAGGAAGAAGATATTC
CAGGAACCTAAGAGCGCACACCAGTGGAGCAGGTGCTGCTGGCATAATCCAGGTGCATCCAGGCCTGT
GGCCAGGAGAGAGGCCAGGTGACAGGGCCCTGCTCCTCTGTGTTGGAGAAAGATGAGTGAAGGG
ATCAACTTCTCTGACAACCTAGGCCGGTGTGGTGTGGTGGGATGCCCTTCCCAACATCAGGTCT
GCAGAGCTGCAGGAGAAGATGGCCTACTTGATCAAACCCTCAGCCCCGGCCAGGCACCCCCAGGGAA
GGCTCTGGTGGAGAACCTGTGCATGAAGGCCGTCAACCAGTCCATAGGCAGGGCCATCAGGCACCAGAA
GGATTTTGCAGCGTAGTGTCTGACAGCAGATATGCCCGGCCCTGTCTGGCCAAGCTGCCGGC
CTGGATCCGAGCCGTGTGGAGTCAAAGCTACCTTTGGCCCCGCAATTGCTGCTGTGCAGAAGTTTCA
CCGGGAGAAGTCGGCCTTCTCTGATGGCAACCACCACTGCCTGGCGCCGTGCCCTTCTTTGTCC
TGCCCGCTGGAGACAGTGTTCGTGGCGTGGTCTGCGGGGATCCTGTTACAAAGGTGAAACCCAGG
AGGAGAGTGTGGAGTCCAGAGTGTGCCAGGACCCAGGCACAGGGTTAGCTCCCGTAGGAGAAAATGG
GGGAATCCTGAA
ACGCGTACGCGGCCGCTCGAG - GFP Tag - GTTTAAAC
  
```

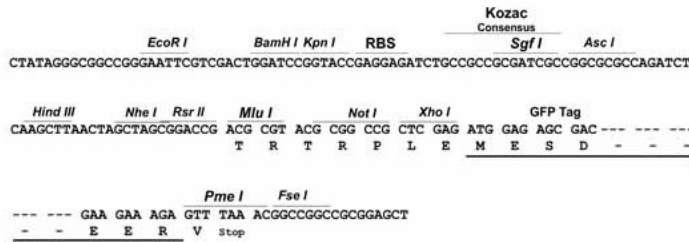
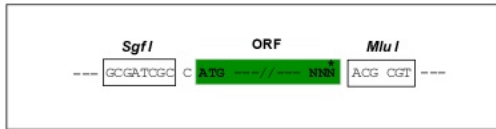
Protein Sequence: >Peptide sequence encoded by RG208483
 Blue=ORF Red=Cloning site Green=Tag(s)

MANETQKVGAIHFPPFPYPSIQEDFMAELYRVLEAGKIGIFESPTGTGKSLSLICGALSWLRFDEQKK
 REEEARLLETGTGPLHDEKDESLCLSSSCEGAAGTPRPAGEPAWVTQFVQKKEERDLVDRLKAEQARRK
 QREERLQQLQHRVQLKYAAKRLRQEEEEERENLLRLSREMLETGPEAERLEQLESGEEELVLAEYESDEE
 KKVASRVEDEDDLEEEHITKIYYCSRTHSQLAQFVHEVKKSPFGKDVRLVSLGSRQNL CVNEDVKS LG
 SVQLINDRCVDMQRSRHEKKKGAEEEKPKRRRQEKQAACPFYNHEQMGLLRDEALAEVKDMEQLLALGK
 EARACPYYSRLAIPAAQLVVL PYQMLLHAATRQAAGIRLQDQVVIIDEAHNLIDTITGMHSVEVSGSQ
 LCQAHSQLLQYVERYGKRLKAKNLMYLKQILYLLEKFVAVLGGNIKQNPNTQSLSQTGTELKTINDFLF
 QSQIDNINL FKVQRYCEKSMISRKLFGFTERYGAVFSSREQPKLAGFQQFLQSLQPRTEALAAPADES
 QASTLRPASPLMHIQGFLAALTTANQDGRVILSRQGSLSQSTLKFLLNPAVHFAQVVKECRAVVIAGG
 TMQPVSDFRQQLACAGVEAERVVEFSCGHVIPPDNILPLVICSGISNQPLEFTFKRELQMMDEVGR
 ILCNLGCVVPGGVVCFPSYEYLRQVHAHWEKGGLLGRLAARKKIFQEPKSAHQVEQVLLAYSRCIQAC
 GQERGQVTGALLSVVGGKMGSEGINFSDNLGRCVVMVGMPPFNIRSAELQEKMAYLDQTLSPRPGTPRE
 GSGGEPVHEGRQPVHRQGHQAPEGFCQRSAPGPAICPAPCPGQAAGLDPSPCGGQSYLWPRHCCCAEVS
 PGEVGLFLMGNHTTAWRRALPLSCPLETVFVGVVCGDPVTKVKPRRRVWSPECCQDPGTGVSSRRRKW
 GNPE
 TRTRPLEMESDESGLPAMEIECRITGTLNGVEFELVGGEGTPEQGRMTNKMSTKGALTFSPYLLSHV
 MGYGFYHFGTYPSGYENPFLHAINNGGYNTRIEKYEDGGVLHVSFSYRYEAGRVIGDFKVMGTGFPED
 SVIFTDKIIRSNATVEHLHPMGDNDLDGSFTRTFSLRDGGYSSVVD SHMHFKSAIHPSILQNGGPMFA
 FRRVEEDHSNTELGIVEYQHAFKTPDADAGEERV

Restriction Sites: Sgfl-MluI

Cloning Scheme:

Cloning sites used for ORF Shutting:

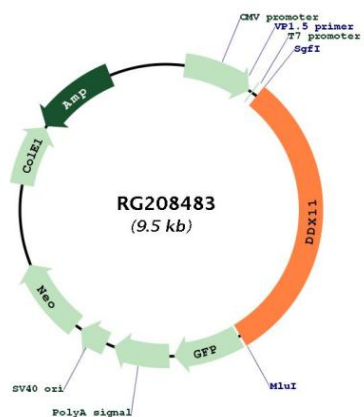


ACCN: NM_152438

ORF Size: 2910 bp

OTI Disclaimer:	The molecular sequence of this clone aligns with the gene accession number as a point of reference only. However, individual transcript sequences of the same gene can differ through naturally occurring variations (e.g. polymorphisms), each with its own valid existence. This clone is substantially in agreement with the reference, but a complete review of all prevailing variants is recommended prior to use. More info
OTI Annotation:	This clone was engineered to express the complete ORF with an expression tag. Expression varies depending on the nature of the gene.
Components:	The ORF clone is ion-exchange column purified and shipped in a 2D barcoded Matrix tube containing 10ug of transfection-ready, dried plasmid DNA (reconstitute with 100 ul of water).
Reconstitution Method:	<ol style="list-style-type: none"> 1. Centrifuge at 5,000xg for 5min. 2. Carefully open the tube and add 100ul of sterile water to dissolve the DNA. 3. Close the tube and incubate for 10 minutes at room temperature. 4. Briefly vortex the tube and then do a quick spin (less than 5000xg) to concentrate the liquid at the bottom. 5. Store the suspended plasmid at -20°C. The DNA is stable for at least one year from date of shipping when stored at -20°C.
RefSeq:	NM_152438.2
RefSeq Size:	3915 bp
RefSeq ORF:	2913 bp
Locus ID:	1663
UniProt ID:	Q96FC9
Cytogenetics:	12p11.21
Protein Families:	Stem cell - Pluripotency
MW:	108.3 kDa
Gene Summary:	DEAD box proteins, characterized by the conserved motif Asp-Glu-Ala-Asp (DEAD), are putative RNA helicases. They are implicated in a number of cellular processes involving alteration of RNA secondary structure such as translation initiation, nuclear and mitochondrial splicing, and ribosome and spliceosome assembly. Based on their distribution patterns, some members of this family are believed to be involved in embryogenesis, spermatogenesis, and cellular growth and division. This gene encodes a DEAD box protein, which is an enzyme that possesses both ATPase and DNA helicase activities. This gene is a homolog of the yeast CHL1 gene, and may function to maintain chromosome transmission fidelity and genome stability. Alternative splicing results in multiple transcript variants encoding distinct isoforms. [provided by RefSeq, Jul 2008]

Product images:



Circular map for RG208483